



ensemble connect

Artistry.

Education.

Advocacy.

Entrepreneurship.

A program of Carnegie Hall, The Juilliard School,
and the Weill Music Institute in partnership with
the New York City Department of Education

CARNEGIE HALL | Juilliard | Weill Music Institute



Ensemble Connect: Lasting Impact

2 What is Ensemble Connect?

4 Artistry and Performance

6 Partnership with New York City Public Schools

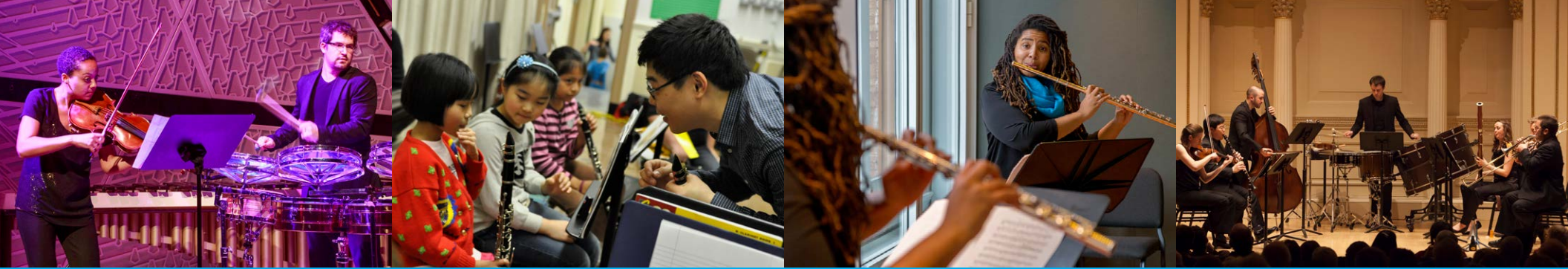
7 Interactive Performances in Schools and Community Venues

9 Residencies

10 Professional Development

11 Ensemble Connect Alumni

13 In Their Own Words



“They are wonderful players ... at the highest level. It makes me very optimistic about the future of music here, when you have these people who also have realized that they have to be evangelists, not high priests. So they must give out of themselves because otherwise the art form is going to die.”

—*Sir Simon Rattle*

What is Ensemble Connect?

Ensemble Connect is a two-year fellowship program for the finest young professional classical musicians in the United States that prepares them for careers combining musical excellence with teaching, community engagement, advocacy, entrepreneurship, and leadership. It offers top-quality performance opportunities, intensive professional development, and the opportunity to partner throughout the fellowship with a New York City public school.

“A valuable part of New York’s musical fabric ... thoughtful, invigorating programs.” —*The New York Times*

Ensemble Connect: Artistry, Education, Leadership, Advocacy

Artistry and Performance

Ensemble Connect has received accolades for the quality of its performances and its fresh and open-minded approach, performing a wide range of music—from centuries past to works written days before a concert—in a variety of performance venues. The group performs its own series at Carnegie Hall and has regularly appeared at The Juilliard School’s Paul Hall and other venues throughout New York City, including (Le) Poisson Rouge in Greenwich Village, Subculture in NoHo, and Galapagos Art Space, National Sawdust, and Roulette in Brooklyn.

Ensemble Connect also performs as part of Carnegie Hall Citywide.



Performance at Weill Recital Hall

“The members of Ensemble Connect were some of the most dedicated, precise, and thorough musicians to ever play my music. I felt like they knew my piece inside and out, and played it as though they had written it themselves.”

—*Missy Mazzoli, Composer*

Ensemble Connect: Vivaldi Sinfonia in B Minor, RV 169,
“Al Santo Sepolcro”

Ensemble Connect with Caroline Shaw: Shaw *Stucco & Brocatelle*

Partnership with New York City Public Schools

Ensemble Connect's in-school residencies represent one of the largest and most in-depth collaborations between a cultural institution and New York City public schools. Each fellow partners with an instrumental music teacher at a public school for a residency totaling 25 days over the course of the year. Fellows serve as musical resources to schools in all five boroughs of New York City and bring mastery of their instruments as well as a professional performer's perspective to music classrooms. They work alongside their partner teachers to strengthen students' musical skills through a tailored, creativity-focused approach. The two-year partnership culminates in a performance festival at The Juilliard School's Peter Jay Sharp Theater featuring groups from each partner school.



Fellow Catherine Gregory working with students in Harlem



Partner School Performance Festival at The Juilliard School

Interactive Performances in Schools and Community Venues

Each year Ensemble Connect presents 80 interactive performances in schools and 20 in community venues across New York City. Interactive performances are designed to invite audiences into the exploration and discovery of a piece of music or a musical concept and include listening activities aimed at deepening and enriching the concert experience. Fellows perform these assembly-style for large, schoolwide audiences and also adapt them for community venues such as prisons, senior care facilities, homeless shelters, and organizations working with special needs populations.



Ensemble Connect fellows presenting an interactive performance at MS224 Manhattan East



Interactive community performance at AHRC

“Ensemble Connect helped me realize the limitless possibilities of an artistic life that is responsive and deeply connected.”

—Owen Dalby, *Ensemble Connect Alumnus, St. Lawrence String Quartet*

Interactive Performances

Residencies

Twice annually, the fellows participate in a five-day residency at Skidmore College in Saratoga Springs, New York. While on campus, the fellows offer master classes, lessons, and class demonstrations, as well as play side by side with students of the Skidmore College Orchestra and read student compositions. Ensemble Connect performs in the Arthur Zankel Music Center's Helen Filene Ladd Concert Hall, presenting concert programs that include world premieres commissioned by Carnegie Hall. The commissioned composers collaborate with the fellows during the residency before the world-premiere performances. In addition, the fellows and composers offer interactive demonstrations and informal performances beyond the music department in classes, dormitories, and libraries, as well as in schools and other community venues in Saratoga Springs.



Ensemble Connect rehearsal at Skidmore College



Interactive performance at Dorothy Nolan Elementary School in Saratoga Springs

Professional Development

Ensemble Connect fellows are supported by a rigorous weekly professional development curriculum aimed at ensuring they have the skills they need to be successful in all areas of the program and to give them the tools they need to shape purposeful, personally rewarding career paths that redefine the role of the musician in the 21st century. The curriculum particularly emphasizes leadership, entrepreneurship, and audience engagement with workshops led by a variety of leaders in the field, including Ensemble Connect alumni.

Fellows also receive coaching sessions with musicians of their choice such as Pamela Frank, Leon Fleisher, and Charles Neidich, along with access to world-renowned composers such as John Adams, David Lang, and Steve Reich.



Professional development workshop



Master class with pianist Leon Fleisher

Ensemble Connect Alumni

Ensemble Connect's alumni have become leaders in the professional music world, using skills that they developed during the program both in and out of the concert hall. The majority of Ensemble Connect's alumni are active performers as soloists or ensemble members. Many also pursue careers as educators, composers, and founders of independent projects.

Where Are Alums Now?

Ensemble Connect alums have gone on to perform, teach, and engage with communities in 53 countries around the world.

Australia	Hong Kong	Russia
Austria	Hungary	Saudi Arabia
Argentina	Iceland	Singapore
Belgium	India	South Korea
Brazil	Indonesia	Spain
Canada	Ireland	Sweden
Chile	Israel	Switzerland
China	Italy	Taiwan
Colombia	Japan	Thailand
Costa Rica	Malaysia	Turkey
Cuba	Mexico	United Arab Emirates
Czech Republic	Netherlands	United Kingdom
Denmark	Norway	USA
Finland	Pakistan	Uzbekistan
France	Peru	Venezuela
Georgia	Philippines	
Germany	Poland	
Greece	Puerto Rico	
Guatemala	Qatar	

Ensemble Connect's alumni have become leaders in the professional music world, using skills that they developed during the program both in and out of the concert hall. The majority of Ensemble Connect's alumni are active performers as soloists or ensemble members. Many also pursue careers as educators, composers, and founders of independent projects.

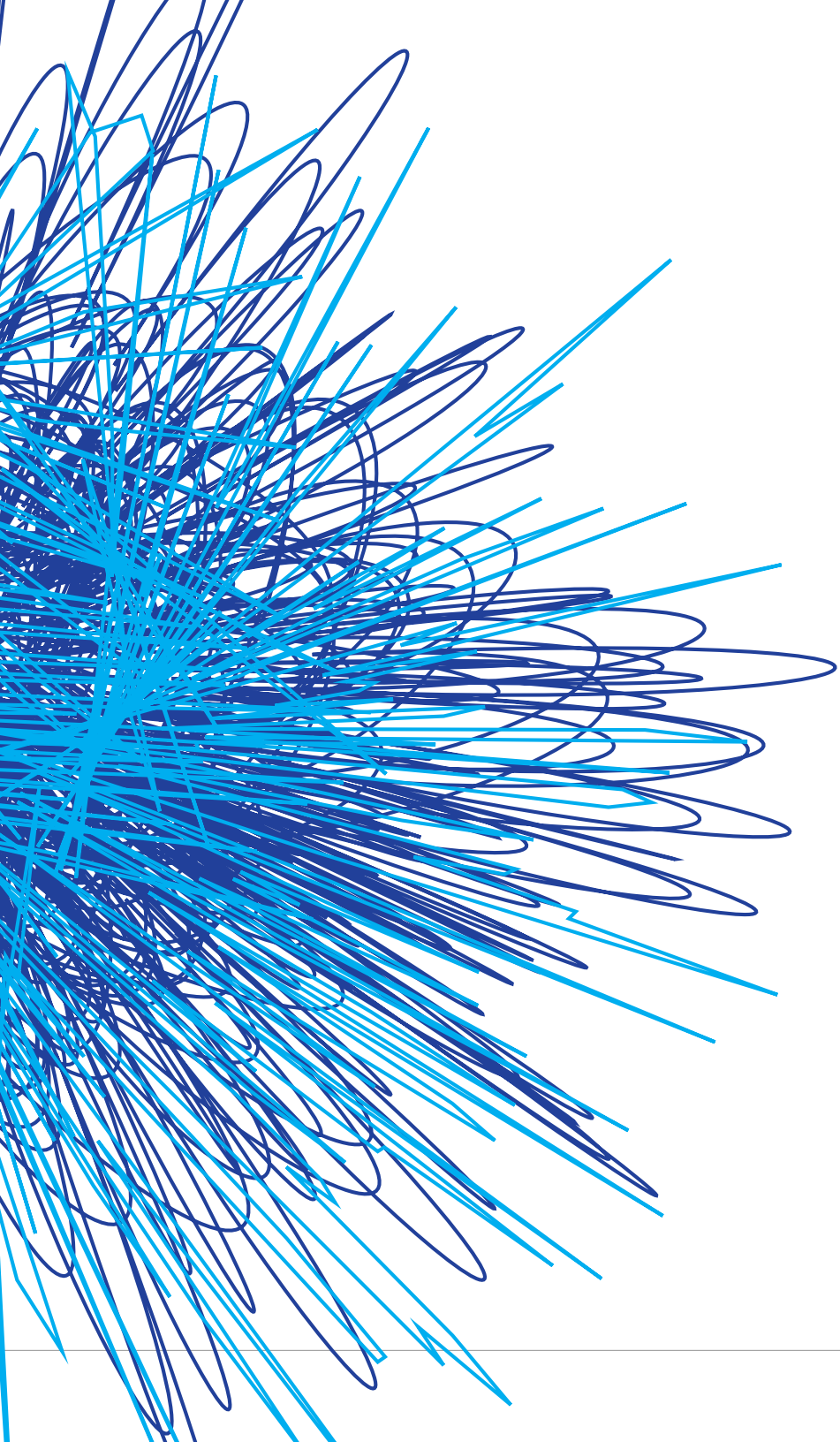
In Their Own Words

“Fun, fearless, and effing great” —*Time Out New York*

Ensemble Connect and Brooklyn Duo play “Take On Me” by a-ha Ensemble Connect teams up with SoulCycle

Conduct Us with Improv Everywhere

43 Cartoon Theme Song Mashup



ensemble connect

Follow us on

Lead funding has been provided by The Diller-von Furstenberg Family Foundation, Susan and Edward C. Forst and *Goldman Sachs Gives*, the Max H. Gluck Foundation, the Irving Harris Foundation, the Hearst Foundations, The Kovner Foundation, Mr. and Mrs. Lester S. Morse Jr., Phyllis and Charles Rosenthal, The Edmond de Rothschild Foundations, and The Morris and Alma Schapiro Fund.

Additional support has been provided by the Arnow Family Fund, The Gladys Kriebel Delmas Foundation, the E.H.A. Foundation, Barbara G. Fleischman, Leslie and Tom Maheras, the Rockefeller Brothers Fund, Susan and Elihu Rose Foundation, Sarah Billingham Solomon and Howard Solomon, and the Trust for Mutual Understanding.

Public support is provided by the New York City Department of Education and the New York State Council on the Arts with support of Governor Andrew Cuomo and the New York State Legislature.

Ensemble Connect is also supported, in part, by an endowment grant from The Kovner Foundation.



Photos: page 1 (clockwise from top) by Stefan Cohen, Steve J. Sherman, Deanna Kennett, Deanna Kennett, and Deanna Kennett; page 2 (left to right) by Richard Termine, Nan Melville, Jesse Yang, and Richard Termine; page 4 by Jennifer Taylor; page 6 by Nan Melville and Stephanie Berger; page 7 by Fadi Kheir and Chris Lee; page 9 by Deanna Kennett (top and bottom); page 10 by Deanna Kennett (left and right); page 12 (clockwise from top left) by Christopher Smith, Stefan Cohen, Stefan Cohen, Nan Melville, Fadi Kheir, Stefan Cohen; page 13 (left to right) Decoda by Matt Dine, Schram by Beowulf Sheehan.