



CARNEGIE HALL
presents

2011–2012 Annual Report



Bernarda Fink with Sir Simon Rattle and the Berliner Philharmoniker | February 25

Steve J. Sherman

CARNEGIE HALL

2011–2012 Annual Report

- 2 From the Chairman of the Board
- 4 From the Executive and Artistic Director
- 6 Board of Trustees
- 8 2011–2012 Concert Season
- 30 Weill Music Institute
- 42 The Academy
- 48 Studio Towers Renovation Project
- 50 Donors
- 70 Treasurer’s Review
- 71 Consolidated Balance Sheet
- 72 Administrative Staff and Volunteers

Cover photo: Goran Bregovic & His Wedding and Funeral Orchestra (October 19) by Stephanie Berger.

Bank of America
Proud Season Sponsor



Chris Lee
Thomas Adès and Ian Bostridge | November 28



Steve J. Sherman
Brentano String Quartet | February 16



Julien Jourdes
L'Arpeggiata | March 15



Richard Termine
Ute Lemper with the Vogler Quartet | April 5



Jennifer Taylor
Evgeny Kissin | May 3

From the Chairman of the Board



Dear Friends,

Carnegie Hall's 2011–2012 season was marked by great artistry, innovation in music education, and exciting opportunities to share our resources with other institutions at the local, national, and international levels. In a season that celebrated the Hall's 120-year history, we also made great strides toward creating the Carnegie Hall of the future, as can be seen in the remarkable physical transformation taking place at the Hall through its Studio Towers Renovation Project.

In the pages of this Annual Report, we review these achievements with deep gratitude to you, the treasured members of the Carnegie Hall family. Your belief in Carnegie Hall and its future is evident in your dedicated patronage and generous support, and I thank you for the many ways in which you contribute to our success.

I would like to express a special note of gratitude to Marina Kellen French and the Anna-Maria and Stephen Kellen Foundation for providing leadership support of concerts by the Berliner Philharmoniker, which took place as part of our 120th anniversary celebration. I would also like to thank Julian H. Robertson Jr. and the Robertson Foundation, which

provided generous support for the national expansion of Link Up, Carnegie Hall's education program that creatively introduces children in grades 3–5 to the orchestra.

My deep appreciation also goes to the generous Chairs and Co-Chairs of the 2011–2012 season's three gala events, which raised a total of \$4.9 million for Carnegie Hall's artistic and education programs. Special thanks go to my fellow Opening Night Gala Co-Chairs Mercedes and Sid R. Bass, Yoko Nagaе Ceschina, Frederick J. Iseman, Marie-Josée and Henry R. Kravis, Katherine Farley and Jerry I. Speyer, and Ann Ziff, as well as Corporate Chairman Dennis M. Nally and PwC. For their leadership of a wonderful Medal of Excellence gala that honored legendary photographer Bill Cunningham, I thank Gala Chairs Annette and Oscar de la Renta and Sarah Jessica Parker, as well as Co-Chairs Mercedes T. Bass, Diane von Furstenberg and Barry Diller, Tina and Terry J. Lundgren, and Elizabeth and Henry T. Segerstrom. In the spring, we presented an enchanting musical theater gala that featured *The Sound of Music*, thanks to the leadership of Gala Co-Chairs Susan and Edward C. Forst, Dinny and Lester S. Morse Jr., and Nelle Nugent and Jolyon Stern, as well as Corporate Chairman Stephen R. Howe Jr., and Ernst & Young.

As always, I gratefully acknowledge the many corporations and foundations that supported Carnegie Hall last season, especially Bank of America, which returned as season sponsor for the seventh consecutive year. Finally, my sincere thanks go to the elected officials of the City and State of New York and the US government, as well as our partners at the New York City Department of Education and other agencies that work with us to bring great music to New Yorkers of all ages and walks of life.

At the close of an extraordinary year, I wish to take a moment to applaud my fellow members of the Board of Trustees for their terrific leadership, generosity, and guidance, which led us to achieve a balanced budget for the 17th consecutive season. This year, Earle S. Altman, Charles M. Rosenthal, Sana H. Sabbagh, and Beatrice Santo Domingo joined our Board of Trustees. We extend a warm welcome to these four new members, and we salute three departing trustees, Joseph J. Plumeri II, Paul J. Sekhri, and Lawrence A. Weinbach, with many thanks for their service. Finally, I commend Clive Gillinson, Executive and Artistic Director, and his enormously talented team. Under Clive's brilliant leadership, we have developed important projects—from concert programming to education to fundraising—with uniform excellence as we continue to find new and exciting ways in which Carnegie Hall can bring people together through music.

Looking beyond our walls at what Carnegie Hall can do for people all over the globe sets the context for the amazing transformation taking place within Carnegie Hall's Studio Towers. Construction work on the Hall's upper floors is moving ahead on schedule, and as the new spaces take shape we can easily imagine them coming to life with music and ideas being exchanged among students, teachers, young musicians, and world-class artists.

Carnegie Hall's new Education Wing is expected to open in 2014, at which point it will be an inspirational home for all of our music education programs, and the home base from which we will share our extensive resources with people everywhere. Our expanded and modernized backstage areas will provide first-class amenities for the great orchestras and artists who come from all over the world to perform here. In addition, a new Research Room for Carnegie Hall's Archives and a Roof Terrace atop the building will add to this fantastic setting for the enjoyment and exploration of music by visitors to Carnegie Hall.

Launching a major capital campaign in difficult economic times has been a challenge, so it is with special gratitude that I acknowledge the City of New York, my colleagues on the Board of Trustees, and many other members of the philanthropic community who have generously come together in support of the Studio Towers Renovation Project so far. As we enter the final stretch of the campaign, I invite the participation of all who care about Carnegie Hall and about music.

As we all work together to build the Carnegie Hall of the future—from the physical facilities to the innovative programs that will bring them to life—we are safeguarding Carnegie Hall's position at the center of the world's cultural stage, where it will continue to stand as a global symbol of excellence, as well as a driving force in the city's economy. Even more importantly, we are ensuring that the world's greatest music will enrich the lives of more and more people in New York and around the world. Thank you for your commitment to Carnegie Hall and for the pivotal role you play in this important work.

Sincerely,

A handwritten signature in black ink, reading "Sanford I. Weill". The signature is fluid and cursive.

Sanford I. Weill
Chairman of the Board

From the Executive and Artistic Director



Dear Friends,

More than 120 years after it first opened, Carnegie Hall continues to be the aspirational destination for the world's greatest artists and ensembles, a place where the best in musical performance and a commitment to our long-established international standard for artistic excellence remain at the heart of everything that we do.

The 2011–2012 season featured an incredible lineup of artists and exemplary music making across all musical genres, beginning with five terrific concerts by Valery Gergiev and the Mariinsky Orchestra that anchored both the Hall's extended 120th anniversary celebration and an in-depth focus on Tchaikovsky, the composer's influence on St. Petersburg, and the era in which Carnegie Hall was born. With *American Mavericks*, led by Michael Tilson Thomas and presented in partnership with the San Francisco Symphony, we explored the worlds of trailblazing American composers and artists with two weeks of performances and events across New York City. Among the approximately 180 wonderful concerts last season, we enjoyed a highly personal *Perspectives* series curated by pianist András Schiff; our first *Perspectives* that focused on early music with an acclaimed series created by L'Arpeggiata and its

artistic director, Christina Pluhar; and concerts that showcased the evocative music of Finnish composer Kaija Saariaho, holder of Carnegie Hall's Richard and Barbara Debs Composer's Chair. In addition, more than a dozen concerts reached beyond the walls of Carnegie Hall to listeners around the world, thanks to the inaugural year of the *Carnegie Hall Live* broadcast and digital series, presented in partnership with WQXR and American Public Media.

Building on our history of great performances—through partnerships with leading cultural institutions, development of meaningful education and community programs that reach an increasing number of people worldwide, the power of technology, and the ongoing evolution of our building through the Studio Towers Renovation Project—we continue to re-imagine what Carnegie Hall can mean for the 21st century. We want to ensure that the Hall is always a dynamic, living place, one that makes an ever-growing contribution to music and people's lives through music for the next 120 years and beyond. Our focus is on creating programs that encourage audiences to explore and expand their artistic horizons. We seek to inspire people by tapping into the aspirational ideals of Carnegie Hall itself as we work toward our goal of making great music accessible to as many people as possible, from all walks of life.

Through the comprehensive music education and community programs of the Weill Music Institute (WMI), Carnegie Hall is creatively serving a broader range of people than ever before by expanding upon initiatives—and inventing new ones—that are active locally, nationally, and around the globe. Extensive programs reached students and residents in all five boroughs of New York City last season. In addition, WMI made free curriculum and education materials available to more than 40 orchestras in the US and Canada through its Link Up program, helping them to connect with elementary schools in their respective local communities, only one example of WMI's growing emphasis on serving as a significant resource to the arts field by freely sharing tools and knowledge. Augmenting WMI's ongoing commitment to young artist training, Carnegie Hall also announced a new major project last January: the National Youth Orchestra of the United States of America (NYO-USA), an ensemble that will invite the most talented young players from across the US to gather for the first time in summer 2013 for two intensive weeks of memorable music making and the opportunity to serve as musical ambassadors for their country as part of an international tour. The NYO-USA will meet annually, with visits to different countries taking place each year.

The Academy—a program of Carnegie Hall, The Juilliard School, and the Weill Music Institute in partnership with the New York City Department of Education—is going strong, capping its fifth year in 2011–2012 with 20 Academy fellows completing two years of top-level performances and professional training. With the number of musicians who have completed The Academy program now increasing, it's been exciting during the past season to see more and more Academy alumni making their mark, developing specially designed artist residencies, locally and internationally, and creating accomplished careers as top-quality performers, innovative programmers, and dedicated teachers fully engaged with their communities.

As the world continues to navigate through tough economic times, it is a huge testament to the work of Carnegie Hall's extended family—artists, concertgoers, trustees, supporters, volunteers, and staff—that the Hall continues not only to move ahead but to thrive, even in these recessionary times. Thank you for your ongoing support. Looking ahead with great optimism to big milestone occasions on the horizon—including the unveiling of our renovated Studio Towers renovations in 2014—it is truly inspiring to think of all we can continue to achieve together.

With all best wishes,

A handwritten signature in black ink, appearing to read "Clive Gillinson".

Clive Gillinson
Executive and Artistic Director



From left to right:

Row 1: Marilyn Horne, Sanford I. Weill, Marina Kellen French, Ann Ziff, Clive Gillinson

Row 2: Oscar de la Renta, Renée Fleming, Judy Francis Zankel, Norton Belknap, Judith W. Evnin, Mayor’s Representative Allison Jaffin, Linda J. Wachner

Row 3: Mrs. Julio Mario Santo Domingo, Robert K. Kraft, Anne M. Finucane, Thomas G. Maheras, Edward C. Forst, Peter W. May, Robert W. Jones, Susan W. Rose

Row 4: Kenneth J. Bialkin, Stanley S. Shuman, Robert I. Lipp, Burton P. Resnick, John W. Zick, Kurt G. Strovink

Row 5: Laura H. Pomerantz, Dennis M. Nally, Ronald E. Blaylock, Terry J. Lundgren, Trustee Fellow Robert F. Arning, A. J. C. Smith

Missing from photo: Trustees Martina Arroyo, Emanuel Ax, Mercedes T. Bass, Clarissa Alcock Bronfman, Nicola Bulgari, Yoko Nagae Ceschina, Richard A. Debs, Gregory T. Durant, The Honorable Roy M. Goodman, Stephen R. Howe Jr., Frederick J. Iseman, Klaus Jacobs, Gilbert Kaplan, Mark E. Kingdon, Sallie L. Krawcheck, Lang Lang, Yo-Yo Ma, Audra McDonald, Harold McGraw III, Lester S. Morse Jr., Joshua L. Nash, Frank N. Newman, Jessye Norman, William G. Parrett, Ronald O. Perelman, Judith Rodin, William D. Rondina, Suki Sandler, Thomas P. Sculco M.D., Henry T. Segerstrom, Sir Howard Stringer, S. Donald Sussman, James Taylor, Lawrence A. Weinbach, James D. Wolfensohn; Advisory Directors Dame Vivien Duffield, Sherry Liu; Ex Officio Trustees Mayor Michael R. Bloomberg, City Council Speaker Christine C. Quinn, Manhattan Borough President Scott M. Stringer, Department of Cultural Affairs Commissioner Kate D. Levin; Honorary Trustees Ralph M. Baruch, Pierre Boulez, Bella L. Linden, Roberta Peters, The Honorable Felix G. Rohatyn, George T. Wein

Board of Trustees

Officers

Sanford I. Weill, *Chairman*
Mercedes T. Bass, *Vice Chairman*
Clarissa Alcock Bronfman, *Vice Chairman*
Klaus Jacobs, *Vice Chairman*
Peter W. May, *Vice Chairman*
Ronald O. Perelman, *Vice Chairman*
Burton P. Resnick, *Vice Chairman*
Kenneth J. Bialkin, *Secretary*
Edward C. Forst, *Treasurer*
Clive Gillinson,
Executive and Artistic Director

Chairmen Emeriti

Richard A. Debs
James D. Wolfensohn

Trustees

Martina Arroyo
Emanuel Ax
Mercedes T. Bass
Norton Belknap
Kenneth J. Bialkin
Ronald E. Blaylock
Clarissa Alcock Bronfman
Nicola Bulgari
Yoko Nagae Ceschina
Richard A. Debs
Gregory T. Durant
Judith W. Evnin
Anne M. Finucane
Renée Fleming
Edward C. Forst
Marina Kellen French
Clive Gillinson
The Honorable Roy M. Goodman
Marilyn Horne

Stephen R. Howe Jr.
Frederick J. Iseman
Klaus Jacobs
Robert W. Jones
Gilbert Kaplan
Mark E. Kingdon
Robert K. Kraft
Sallie L. Krawcheck
Lang Lang
Robert I. Lipp
Terry J. Lundgren
Yo-Yo Ma
Thomas G. Maheras
Peter W. May
Audra McDonald
Harold McGraw III
Lester S. Morse Jr.
Dennis M. Nally
Joshua L. Nash
Frank N. Newman
Jessye Norman
William G. Parrett
Ronald O. Perelman
Laura H. Pomerantz
Oscar de la Renta
Burton P. Resnick
Judith Rodin
William D. Rondina
Susan W. Rose
Suki Sandler
Mrs. Julio Mario Santo Domingo
Thomas P. Sculco M.D.
Henry T. Segerstrom
Stanley S. Shuman
A. J. C. Smith
Sir Howard Stringer

Kurt G. Strovink
S. Donald Sussman
James Taylor
Linda J. Wachner
Sanford I. Weill
Lawrence A. Weinbach
James D. Wolfensohn
Judy Francis Zankel
John W. Zick
Ann Ziff

Trustee Fellow

Robert F. Arning

Advisory Directors

Dame Vivien Duffield
Sherry Liu

Honorary Trustees

Ralph M. Baruch
Pierre Boulez
Bella L. Linden
Roberta Peters
The Honorable Felix G. Rohatyn
George T. Wein

Ex Officio Trustees

Michael R. Bloomberg,
Mayor of the City of New York
Christine C. Quinn,
Speaker, New York City Council
Scott M. Stringer,
Manhattan Borough President
Kate D. Levin,
Commissioner, New York City Department of Cultural Affairs

As of June 30, 2012

Carnegie Hall is owned by the City of New York, and its operation is made possible, in part, by public funds provided through the New York City Department of Cultural Affairs.

2011–2012 Concert Season

A Season of Discovery, 120 Years in the Making

In 2011–2012, Carnegie Hall celebrated its 120th anniversary with a season-long exploration of the vibrant world of music and arts that flourished around the time of the Hall’s birth. Throughout the year, audiences were encouraged to explore diverse musical genres offered in approximately 180 performances by some of the world’s greatest artists, from Baroque to Broadway, classical to contemporary, and everything in between. While András Schiff surveyed the works of his fellow Hungarian Béla Bartók and his influence on the world, Christina Pluhar and L’Arpeggiata led audiences on an inventive journey through the evolution of Baroque music and the imaginative world of improvisation in Carnegie Hall’s first-ever early music *Perspectives* series.

Audiences got to experience the sensual sound worlds of Finnish composer Kaija Saariaho, the 2011–2012 Richard and Barbara Debs Composer’s Chair, through a series of concerts that featured her expansive compositions performed by top musicians from her homeland and around the globe as well as professional training workshops with the composer. Pioneers of the American sound were also spotlighted in the citywide *American Mavericks*, presented in partnership with Michael Tilson Thomas and the San Francisco Symphony, and featuring performances by the orchestra as well as an invigorating line-up of musical interpreters.

All of these concerts—and many more highlights throughout the season—reflect the energetic spirit of discovery that informed the Hall’s inception and still characterizes Carnegie Hall in the 21st century.

Chris Lee



Yo-Yo Ma with Valery Gergiev and the Mariinsky Orchestra
at Carnegie Hall’s Opening Night Gala | October 5

A Golden Age of Music

Much of the breathtaking music featured this season was created around the turn of the 20th century in the astonishing era that gave birth to Carnegie Hall. In addition to an expansive tribute to Pyotr Ilyich Tchaikovsky, who performed at the Hall’s very first Opening Night, fall performances and events also explored the Russian composer’s influence on St. Petersburg with a series of concerts, anchored by legendary conductor Valery Gergiev and the Mariinsky Orchestra, that included a complete Tchaikovsky symphony cycle as well as works by musical successors. Carnegie Hall also showcased orchestral masterpieces from this Golden Age of music and demonstrated their impact on other art forms—not only on the three stages at 57th Street and Seventh Avenue, but also in partner events across New York City and through Carnegie Hall’s first-ever downloadable app for smartphones, which enabled users to take part in a special walking tour that traced Tchaikovsky’s steps as he explored the Big Apple on his historic 1891 visit.

October

Wednesday, October 5 at 7 PM | Stern/Perelman
Carnegie Hall’s Opening Night Gala
Mariinsky Orchestra
Valery Gergiev, Music Director and Conductor
Yo-Yo Ma, Cello

Thursday, October 6 at 8 PM | Stern/Perelman
Mariinsky Orchestra
Valery Gergiev, Music Director and Conductor

Sunday, October 9 at 2 PM | Stern/Perelman
Mariinsky Orchestra
Valery Gergiev, Music Director and Conductor

Monday, October 10 at 8 PM | Stern/Perelman
Mariinsky Orchestra
Valery Gergiev, Music Director and Conductor

Tuesday, October 11 at 8 PM | Stern/Perelman
Mariinsky Orchestra
Valery Gergiev, Music Director and Conductor
Daniil Trifonov, Piano

Friday, October 14 at 7:30 PM | Zankel
American Composers Orchestra
George Manahan, Music Director and Conductor
Mellissa Hughes, Soprano and Electronics
Daniel Iglesia, Videographer
Kenji Bunch, Amplified Viola

Friday, October 14 at 8 PM | Stern/Perelman
The New York Pops
Jack Everly, Guest Conductor
Ashley Brown, Guest Artist | Tony DeSare, Guest Artist
James T. Lane, Guest Artist | Hugh Panaro, Guest Artist
NaTasha Yvette Williams, Guest Artist

Saturday, October 15 at 1 PM | Weill
Discovery Day: Tchaikovsky in St. Petersburg
Richard Wortman, Keynote Speaker
Andrei Bondarenko, Baritone | Gary Matthewman, Piano
Tarik Amar, Speaker | Katerina Clark, Speaker
Laura Engelstein, Speaker | Timothy M. Frye, Speaker
Boris Gasparov, Speaker | Lynn Garafola, Speaker
Simon Morrison, Speaker | Elizabeth Kridl Valkenier, Speaker
John Malmstad, Moderator and Speaker
Catharine Nepomnyashchy, Moderator
Maya Pritsker, Moderator

Saturday, October 15 at 10 PM | Zankel
Aurelio Martinez

Sunday, October 16 at 3 PM | Stern/Perelman
The MET Orchestra
Fabio Luisi, Principal Conductor
Richard Goode, Piano
Christine Rice, Mezzo-Soprano

Wednesday, October 19 at 8 PM | Stern/Perelman
Goran Bregovic & His Wedding and Funeral Orchestra

Thursday, October 20 at 7:30 PM | Zankel
The English Concert
Harry Bicket, Director, Harpsichord, and Organ
Andreas Scholl, Countertenor

Thursday, October 20 at 8 PM | Stern/Perelman
Yuja Wang, Piano

Friday, October 21 at 7:30 PM | Weill
Layla Claire, Soprano
Natalia Katjukova, Piano

Saturday, October 22 at 7:30 PM | Weill
Miloš, Guitar

Saturday, October 22 at 8 PM | Stern/Perelman
Audra McDonald
Ted Sperling, Conductor

Tuesday, October 25 at 7:30 PM | Weill
Ensemble ACJW



Valery Gergiev and the Mariinsky Orchestra | October 11



Goran Bregovic & His Wedding and Funeral Orchestra | October 19



Yuja Wang | October 20



Audra McDonald | October 22



Brooklyn Rider | October 31

Tuesday, October 25 at 8 PM | Stern/Perelman
The Philadelphia Orchestra
 Charles Dutoit, Chief Conductor
 Lang Lang, Piano

Wednesday, October 26 at 7:30 PM | Zankel
Standard Time with Michael Feinstein
 Michael Feinstein, Artistic Director
 Monica Mancini, Karen Mason, and Aaron Weinstein,
 Special Guests
 With pianists Christopher Denny and Mamiko Kitaura

Thursday, October 27 at 8 PM | Stern/Perelman
Minnesota Orchestra
 Osmo Vänskä, Music Director and Conductor
 Stephen Hough, Piano

Friday, October 28 at 7:30 PM | Stern/Perelman
Budapest Festival Orchestra
 Iván Fischer, Music Director and Conductor
 András Schiff, Piano

Friday, October 28 at 7:30 PM | Weill
Cuarteto Casals

Friday, October 28 at 10 PM | Zankel
Joe Lovano Us Five
 Joe Lovano, Tenor and Soprano Saxophones
 James Weidman, Piano
 Esperanza Spalding, Bass
 Francisco Mela, Drums
 Otis Brown III, Drums

Saturday, October 29 at 8 PM | Stern/Perelman
Budapest Festival Orchestra
 Iván Fischer, Music Director and Conductor
 András Schiff, Piano

Monday, October 31 at 7:30 PM | Zankel
Brooklyn Rider
 with Christopher Tignor, Electronics

Monday, October 31 at 8 PM | Stern/Perelman
András Schiff, Piano

The World’s Greatest Artists. Revealed.

When asked to be a 2011–2012 *Perspectives* artist, pianist András Schiff was adamant that his season-long residency focus on his countryman Béla Bartók’s vibrant legacy as well as musical reflections of Schiff and Bartók’s native Hungary. Schiff curated a diverse series of concerts from recitals and orchestral to folk music, performed by the pianist and special guests from his homeland that included Iván Fischer and the Budapest Festival Orchestra, pianist Dénes Várjon, and folk group Muzsikás. He also collaborated with the Salzburg Marionette Theater and with young pianists who took part in a Professional Training Workshop presented by the Weill Music Institute.

On their highly creative four-concert *Perspectives* series, Christina Pluhar and L’Arpeggiata combined Corsican folk music with sacred Italian music, explored the many sides of the tarantella, and revived the Spanish and Neapolitan Baroque tradition, all to find the connecting threads that tie together the music from these varying regions and time periods. Whether it was audiences in the concert hall or young musicians in a series of master classes, all who took part in this residency witnessed the inventive collective’s commitment to tracing the music that forms the core of its repertoire from the 17th century, tying it through contemporary influences to the musical world we inhabit today.



András Schiff with Iván Fischer and the Budapest Festival Orchestra
 October 28



Jennifer Taylor

Nobuyuki Tsujii | November 10



Richard Termine

Cheyenne Jackson with Steven Reineke and The New York Pops | November 18

November

Thursday, November 3 at 7:30 PM | Zankel
Juho Pohjonen, Piano

Friday, November 4 at 8 PM | Stern/Perelman
Sweet Honey In The Rock

Friday, November 4 at 10 PM | Zankel
Bill Frisell / Bill Morrison
The Great Flood
Bill Frisell, Guitar | Ron Miles, Trumpet
Tony Scherr, Bass | Kenny Wollesen, Drums

Saturday, November 5 at 7:30 PM | Stern/Perelman
Atlanta Symphony Orchestra
Robert Spano, Music Director and Conductor
Garrrick Ohlsson, Piano

Saturday, November 5 at 9 PM | Zankel
Bang on a Can All-Stars
Ashley Bathgate, Cello | Robert Black, Bass
Vicky Chow, Piano | David Cossin, Percussion
Derek Johnson, Electric Guitar
Evan Ziporyn, Clarinets and Alto Saxophone

Tuesday, November 8 at 7:30 PM | Zankel
Leonidas Kavakos, Violin
Enrico Pace, Piano

Thursday, November 10 at 8 PM | Stern/Perelman
Nobuyuki Tsujii, Piano

Friday, November 11 at 10 PM | Zankel
Joseph Arthur

Saturday, November 12 at 7:30 PM | Zankel
Angelika Kirchschlager, Mezzo-Soprano
Jean-Yves Thibaudet, Piano

Monday, November 14 at 8 PM | Stern/Perelman
Joshua Bell, Violin
Sam Haywood, Piano

Tuesday, November 15 at 7:30 PM | Weill
The Theatre of Early Music
Daniel Taylor, Conductor and Countertenor
Deborah York, Soprano

Wednesday, November 16 at 8 PM | Stern/Perelman
Orchestre Révolutionnaire et Romantique
Sir John Eliot Gardiner, Artistic Director and Conductor

Thursday, November 17 at 8 PM | Stern/Perelman
Orchestre Révolutionnaire et Romantique
Sir John Eliot Gardiner, Artistic Director and Conductor

Friday, November 18 at 7:30 PM | Zankel
Tafelmusik Baroque Orchestra
Jeanne Lamon, Music Director

Friday, November 18 at 7:30 PM | Weill
Marie-Elisabeth Hecker, Cello
Martin Helmchen, Piano

Friday, November 18 at 8 PM | Stern/Perelman
The New York Pops
Steven Reineke, Music Director and Conductor
Cheyenne Jackson, Guest Artist

The Beatles Hidden Gallery

A special fall exhibition in Zankel Hall's lobby spaces celebrated Carnegie Hall's illustrious history by highlighting historic performances by The Beatles in 1964. The exhibit included more than 30 recently discovered candid images of the seminal rock group captured by British photographer and award-winning cinematographer Paul Berriff. These intimate photographs—shot in 1963 and 1964 around the time of the group's first tour of the United States, which included two landmark performances at Carnegie Hall—showcase the young band on the cusp of superstardom, just prior to the worldwide eruption of Beatlemania. The exhibit was accessible to ticketholders for all Zankel Hall performances as well as to the general public during several free open gallery days.



Paul Berriff

The Beatles Hidden Gallery

Saturday, November 19 at 8 PM | Stern/Perelman
Baltimore Symphony Orchestra

Marin Alsop, Music Director and Conductor
James Robinson, Stage Director
Caroline Dhavernas, Speaker | Ronald Guttman, Speaker
Tamara Wilson, Soprano | Hae Ji Chang, Soprano
Kelley O'Connor, Mezzo-Soprano
Timothy Fallon, Tenor | Morris Robinson, Bass
Cynthia Millar, Ondes Martenot
Concert Artists of Baltimore Vocalists
The Peabody-Hopkins Chorus | Edward Polochick, Director
Morgan State University Choir | Eric Conway, Director
Peabody Children's Chorus | Doreen Falby, Director

Saturday, November 19 at 8:30 PM | Zankel
Rhythm of Rajasthan

Lakha Khan Manganiyar, Sarangi
Kalla Khan Manganiyar, Kamayacha and Vocals
Kachra Khan Manganiyar, Vocals
Faqir Khan Manganiyar, Dholak
Shakoor Khan Langa, Khartaal, Algoza, and Morchang
Asha Sapera, Dancer | Dhapu Devi, Dancer
Nitin Nath Harsh, Director

Monday, November 28 at 8 PM | Stern/Perelman
Ian Bostridge, Tenor
Thomas Adès, Piano

Tuesday, November 29 at 7:30 PM | Zankel
Kalichstein-Laredo-Robinson Trio
Michael Tree, Viola | Harold Robinson, Bass

Wednesday, November 30 at 7:30 PM | Zankel
Avanti! Chamber Orchestra
Hannu Lintu, Conductor | Elizabeth Futral, Soprano
Heikki Nikula, Bass Clarinet | Avanti! Quartet



Christopher Smith

Timothy Fallon with The Peabody-Hopkins Chorus, Morgan State University Choir, Peabody Children's Chorus, and the Baltimore Symphony Orchestra November 19



Ambrose Akinmusire Big Band | December 3

December

Thursday, December 1 at 7:30 PM | Zankel
Avanti! Chamber Orchestra
Hannu Lintu, Conductor
Markus Allan, Vocalist
Tuomas Hiltunen, Host

Thursday, December 1 at 7:30 PM | Weill
Ensemble ACJW

Friday, December 2 at 7:30 PM | Weill
Borromeo String Quartet

Friday, December 2 at 10 PM | Zankel
Justin Townes Earle
Amanda Shires, Fiddle
Bryn Davies, Bass

Saturday, December 3 at 10 PM | Zankel
Ambrose Akinmusire Big Band

Ambrose Akinmusire, Trumpet
Sean Jones, Trumpet
Jason Palmer, Trumpet
Josh Roseman, Trombone
Corey King, Trombone
Walter Smith III, Tenor Saxophone
Marcus Strickland, Tenor Saxophone
Tia Fuller, Alto Saxophone
Dayna Stephens, Alto Saxophone
Myron Walden, Alto Saxophone
Sullivan Fortner, Piano
Harish Raghavan, Bass
Justin Brown, Drums

Wednesday, December 7 at 8 PM | Stern/Perelman
London Philharmonic Orchestra
Vladimir Jurowski, Principal Conductor
Janine Jansen, Violin

Thursday, December 8 at 8 PM | Stern/Perelman
London Philharmonic Orchestra
Vladimir Jurowski, Principal Conductor
Emanuel Ax, Piano

Saturday, December 10 at 8 PM | Stern/Perelman
Karita Mattila, Soprano
Martin Katz, Piano

Sunday, December 11 at 1 PM | Zankel
Carnegie Hall Family Concert: Celso Duarte
Celso Duarte, Musical Director, Harp, Guitarra de Son, Jarana, Charango, and Vocals
Violeta Ortega, Vocals, Jarana and Zapateado
Alfredo “Godo” Herrera, Vocals, Jarana and Quijada
Rodrigo Duarte, Electric Cello
Samuel Torres, Percussion
Russell Granet, Host

Tuesday, December 13 at 8 PM | Stern/Perelman
Christian Zacharias, Piano

Thursday, December 15 at 7:30 PM | Weill
Iestyn Davies, Countertenor
Kevin Murphy, Piano

Thursday, December 15 at 8 PM | Stern/Perelman
Orchestra of St. Luke’s
Robert Spano, Conductor
Susanna Phillips, Soprano
Sasha Cooke, Mezzo-Soprano
Nicholas Phan, Tenor
Joshua Hopkins, Baritone
Atlanta Symphony Orchestra Chamber Chorus
Norman Mackenzie, Director

Friday, December 16 at 7:30 PM | Zankel
Ensemble ACJW
Pablo Heras-Casado, Conductor
Isabel Leonard, Mezzo-Soprano

Friday, December 16 at 8 PM | Stern/Perelman
The New York Pops
Steven Reineke, Music Director and Conductor
John Pizzarelli, Guest Artist
Jessica Molaskey, Guest Artist
Essential Voices USA
Judith Clurman, Music Director and Conductor

Saturday, December 17 at 8 PM | Stern/Perelman
The New York Pops
Steven Reineke, Music Director and Conductor
John Pizzarelli, Guest Artist
Jessica Molaskey, Guest Artist
Essential Voices USA
Judith Clurman, Music Director and Conductor

Saturday, December 24 at 7 PM | Stern/Perelman
New York String Orchestra
Jaime Laredo, Conductor and Violin
Bella Hristova, Violin

Wednesday, December 28 at 8 PM | Stern/Perelman
New York String Orchestra
Jaime Laredo, Conductor
André Watts, Piano



Vladimir Jurowski and the London Philharmonic Orchestra
December 8



Christian Zacharias | December 13



Kevin Murphy and Iestyn Davies | December 15

January

Sunday, January 15 at 3 PM | Stern/Perelman
The MET Orchestra
Fabio Luisi, Principal Conductor | Anthony McGill, Clarinet
Stephen Williamson, Clarinet | Renée Fleming, Soprano

Monday, January 16 at 5:30 PM | Weill
The Song Continues ... Duo Recital
Megan Hart, Soprano | Elliot Madore, Baritone
Natalia Katjukova, Piano | Sun Ha Yoon, Piano

Monday, January 16 at 7:30 PM | Weill
The Song Continues ... Marilyn Horne Master Class
Laura Strickling, Soprano | Tynan Davis, Mezzo-Soprano
Tai Oney, Countertenor | Jonathan Estabrooks, Baritone
Renate Rohlfing, Piano | Jonathan Ware, Piano

Tuesday, January 17 at 7:30 PM | Zankel
The Song Continues ... Renée Fleming Master Class
Dušica Bijelić, Soprano | Melissa Shippen Burrows, Soprano
Nathalie Mittelbach, Mezzo-Soprano | Marco Stefani, Tenor
Brent Funderburk, Piano | Saule Tlenchiyeva, Piano

Wednesday, January 18 at 5:30 PM | Weill
The Song Continues ... Duo Recital
Mireille Asselin, Soprano | José Rubio, Baritone | Bryan Wagorn, Piano

Wednesday, January 18 at 7:30 PM | Weill
The Song Continues ... Graham Johnson Master Class
Lilla Heinrich Szász, Soprano | Pamela Teed, Soprano
Zach Finkelstein, Tenor | Jeffrey Goble, Baritone
Tyler Wottrich, Piano | Maureen Zoltek, Piano

Thursday, January 19 at 7:30 PM | Zankel
The Song Continues ... Annual Recital
Emalie Savoy, Soprano | Sasha Cooke, Mezzo-Soprano
Dimitri Pittas, Tenor | Joshua Hopkins, Baritone
Nathan Brandwein, Piano | Justina Lee, Piano
Jerad Mosbey, Piano | Brian Zeger, Piano
Special Guest Artists
Joyce DiDonato, Mezzo-Soprano
Warren Jones, Piano

Sunday, January 22 at 1 PM | Zankel
Carnegie Hall Family Concert: Ensemble ACJW
Julietta Curenton, Flute | Alicia Lee, Clarinet
Greg DeTurck, Piano | Anna Elashvili, Violin
Saeunn Thorsteinsdottir, Cello | Charlotte Blake Alston, Host

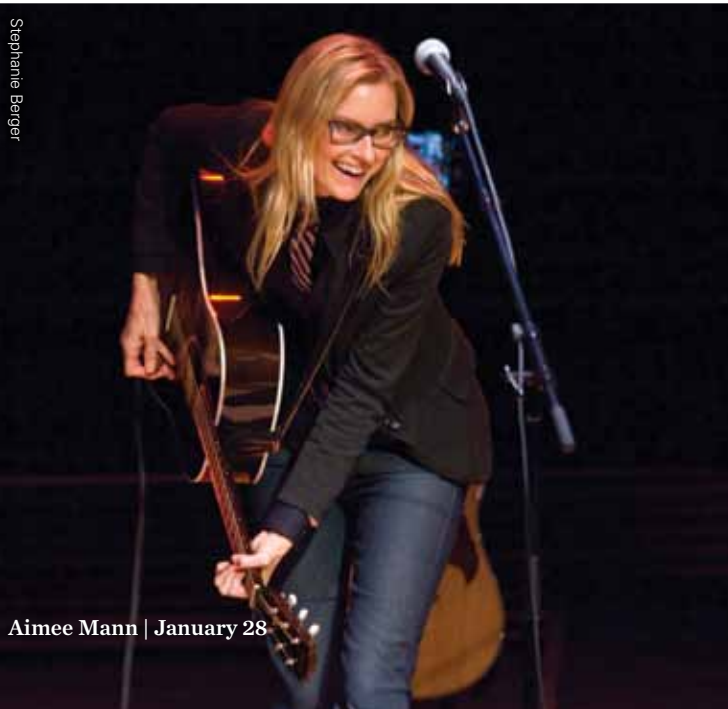
Friday, January 27 at 6 PM | Zankel
Making Music: David Lang
Commentary by David Lang | Theatre of Voices
Shara Worden, Vocals | Bryce Dessner, Guitar
Owen Pallett, Vocals and Violin | Nico Muhly, Keyboards
Jeremy Geffen, Series Moderator



Renée Fleming with Fabio Luisi and The MET Orchestra
January 15



Jeremy Geffen and David Lang | January 27



Aimee Mann | January 28

Saturday, January 28 at 10 PM | Zankel
Aimee Mann

Tuesday, January 31 at 8 PM | Stern/Perelman
American Composers Orchestra
Dennis Russell Davies, Conductor Laureate
Maki Namekawa, Piano

February

Wednesday, February 1 at 8 PM | Stern/Perelman
Susan Graham, Mezzo-Soprano
Malcolm Martineau, Piano

Thursday, February 2 at 7:30 PM | Zankel
Europa Galante
Fabio Biondi, Violinist and Director
Vivica Genaux, Mezzo-Soprano

Friday, February 3 at 10 PM | Zankel
Ben Allison, Bass
Michael Blake, Tenor Saxophone and Clarinet
Steve Cardenas, Guitar | Rudy Royston, Drums
Brandon Seabrook, Guitar and Banjo
Rogerio Boccato, Percussion | Joey Arias, Vocals

Sunday, February 5 at 3 PM | Stern/Perelman
The Carmina Burana Choral Project
Orchestra of St. Luke's | David Robertson, Conductor
Celena Shafer, Soprano | Lawrence Brownlee, Tenor
David Adam Moore, Baritone | Joe Miller, Choral Preparer
Leslie Stifelman, Music Supervisor
Dianne Berkun, Choral Preparer
S. Katy Tucker, Video and Projection Design
Nicole Pearce, Lighting Design | Brooklyn High School of the Arts
Brooklyn Technical High School | Fordham High School for the Arts
Forest Hills High School | Fort Hamilton High School
Frank Sinatra School of the Arts | Mark Twain I.S. 239 for the Gifted
& Talented | Scarsdale High School | Songs of Solomon



JAY Z performing at a benefit concert for the United Way of New York City and the Shawn Carter Scholarship Foundation
in Stern Auditorium / Perelman Stage | February 6

Wednesday, February 8 at 7:30 PM | Zankel
Fretwork

Thursday, February 9 at 8 PM | Stern/Perelman
A Tribute to the Music of Motown
Boyz II Men | Dionne Warwick | Paul Shaffer
Martha Reeves | BeBe Winans | Melba Moore
Kindred the Family Soul
Soledad O’Brien, Host
Ray Chew, Musical Director

Tuesday, February 14 at 7:30 PM | Weill
Ensemble ACJW
Gabriel Ebert, Narrator

Tuesday, February 14 at 8 PM | Stern/Perelman
The Philadelphia Orchestra
Charles Dutoit, Chief Conductor
James Ehnes, Violin

Wednesday, February 15 at 8 PM | Stern/Perelman
Leif Ove Andsnes, Piano

Thursday, February 16 at 7:30 PM | Weill
Brentano String Quartet

Thursday, February 16 at 8 PM | Stern/Perelman
Orchestra of St. Luke’s
Sir Roger Norrington, Conductor
Jeremy Denk, Piano

Saturday, February 18 at 8 PM | Zankel
Transient Glory
Young People’s Chorus of New York City
Francisco J. Núñez, Artistic Director and Founder
John Schaefer, Host | JACK Quartet
Courtenay Budd, Soprano | Jon Holden, Piano
Jacqueline Kerrod, Harp | Chris Thompson, Percussion
Ana Alvarez, Conductor | Karen Cooksey, Conductor
Jennah Delp, Conductor | Dominick DiOrio, Conductor
Grant Gershon, Conductor | Rebecca Lord, Conductor
Stephanie Mowery, Conductor | Tian Hui Ng, Conductor
Troy David Robertson, Conductor
Interviews with John Corigliano | Doug Cuomo

Sunday, February 19 at 7:30 PM | Weill
András Schiff Master Class
Alexandra Dariescu, Piano | Zoltán Fejérvári, Piano
Yuval Gilad, Piano | Naomi Kudo, Piano
Roman Rabinovich, Piano

Tuesday, February 21 at 7:30 PM | Zankel
Eric Owens, Bass-Baritone
Robert Spano, Piano

Tuesday, February 21 at 7:30 PM | Weill
András Schiff Young Artists Concert
Alexandra Dariescu, Piano | Zoltán Fejérvári, Piano
Yuval Gilad, Piano | Naomi Kudo, Piano
Roman Rabinovich, Piano



Bernarda Fink and Camilla Tilling with Sir Simon Rattle and the Berliner Philharmoniker | February 25

Wednesday, February 22 at 7:30 PM | Zankel
Muzsikás
Mihály Sipos, Violin
László Porteleki, Violin, Koboz, and Tambura
Péter Éri, Viola, Kontra, Mandolin, and Flutes
Dániel Hamar, Contrabass, Gardon, and Turkish Drum
Mária Petrás, Guest Vocalist
with András Schiff, Piano

Thursday, February 23 at 8 PM | Stern/Perelman
Berliner Philharmoniker
Sir Simon Rattle, Music Director and Conductor

Friday, February 24 at 7:30 PM | Weill
Erin Morley, Soprano
Vlad Iftinca, Piano

Friday, February 24 at 8 PM | Stern/Perelman
Berliner Philharmoniker
Sir Simon Rattle, Music Director and Conductor

Saturday, February 25 at 7:30 PM | Zankel
András Schiff, Piano
Dénes Várjon, Piano
James Michael Deitz, Percussion
David Skidmore, Percussion

Saturday, February 25 at 8 PM | Stern/Perelman
Berliner Philharmoniker
Sir Simon Rattle, Music Director and Conductor
Camilla Tilling, Soprano
Bernarda Fink, Mezzo-Soprano
Westminster Symphonic Choir
Joe Miller, Conductor

Monday, February 27 at 7:30 PM | Zankel
Simon Trpčeski, Piano

Tuesday, February 28 at 7:30 PM | Zankel
Kronos Quartet
With Special Guest Joan Jeanrenaud, Cello

Wednesday, February 29 at 7:30 PM
Standard Time with Michael Feinstein
Michael Feinstein, Artistic Director
With Special Guests
Kate Baldwin
Adam Swanson
With pianist Rob Berman



Boyz II Men in *A Tribute to the Music of Motown* | February 9



Lorin Maazel and the Vienna Philharmonic Orchestra | March 2

Jennifer Taylor

March

Friday, March 2 at 8 PM | Stern/Perelman
Vienna Philharmonic Orchestra
Lorin Maazel, Conductor

Saturday, March 3 at 1 PM | Zankel
Family Sing: Songs of Solomon
Chantel R. Wright, Conductor
Thomas Cabaniss, Host

Saturday, March 3 at 8 PM | Stern/Perelman
Vienna Philharmonic Orchestra
Lorin Maazel, Conductor

Sunday, March 4 at 2 PM | Stern/Perelman
Vienna Philharmonic Orchestra
Lorin Maazel, Conductor

Monday, March 5 at 6 PM | Zankel
Making Music: Kaija Saariaho
Commentary by Kaija Saariaho
Solistes XXI, Vocal Ensemble | Rachid Safir, Director
Jean-Baptiste Barrière, Video Artist
Jeremy Geffen, Series Moderator

Tuesday, March 6 at 8 PM | Stern/Perelman
Boston Symphony Orchestra
John Oliver, Conductor | Christine Brewer, Soprano
Michelle DeYoung, Mezzo-Soprano | Simon O'Neill, Tenor
Eric Owens, Bass-Baritone | Tanglewood Festival Chorus

Wednesday, March 7 at 8 PM | Stern/Perelman
Boston Symphony Orchestra
Christoph Eschenbach, Conductor | Cédric Tiberghien, Piano

Thursday, March 8 at 8 PM | Stern/Perelman
Boston Pops
Keith Lockhart, Conductor | Time for Three
Thomas Martin, Clarinet

Friday, March 9 at 7:30 PM | Stern/Perelman
Boston Symphony Orchestra
Stéphane Denève, Conductor | Peter Serkin, Piano

Friday, March 9 at 7:30 PM | Weill
Kaija Saariaho and Anssi Karttunen Master Class
Aisha Orazbayeva, Violin | Sarah Saviet, Violin
Emily Deans, Viola | Anna Pelczer, Viola
Paul Dwyer, Cello | Mira Luxion, Cello | Tony Flynt, Bass

Friday, March 9 at 10 PM | Zankel
Gretchen Parlato, Vocals
Lionel Loueke, Guitar and Vocals
With Special Guest
Becca Stevens, Vocals, Ukulele, Guitar, Charango,
and African Harp

Saturday, March 10 at 8 PM | Stern/Perelman
St. Louis Symphony
David Robertson, Music Director and Conductor
Karita Mattila, Soprano

Monday, March 12 at 7:30 PM | Zankel
Kaija Saariaho and Anssi Karttunen
Young Artists Concert
Aisha Orazbayeva, Violin | Sarah Saviet, Violin
Emily Deans, Viola | Anna Pelczer, Viola
Paul Dwyer, Cello | Mira Luxion, Cello | Tony Flynt, Bass
Composers: Jenny Beck | Louis Chiappetta | Edmund Finnis
Ursula Kwong-Brown | Anna Pidgorna | Chris Williams

Tuesday, March 13 at 7:30 PM | Weill
Morgenstern Trio

Wednesday, March 14 at 7:30 PM | Zankel
L'Arpeggiata
Christina Pluhar, Artistic Director and Theorbo
Gianluigi Trovesi, Clarinet | Lucilla Galeazzi, Vocalist
Luciana Mancini, Vocalist | Vincenzo Capezzuto, Vocalist
Raquel Andueza, Soprano

Thursday, March 15 at 7:30 PM | Zankel
L'Arpeggiata
Christina Pluhar, Artistic Director and Theorbo
Ensemble Barbara Furtuna | Lucilla Galeazzi, Vocalist
Raquel Andueza, Soprano

Friday, March 16 at 7:30 PM | Zankel
L'Arpeggiata
Christina Pluhar, Artistic Director and Theorbo
Lucilla Galeazzi, Vocalist

Expanding Sonic Frontiers

Hailed by critics as one of the most original compositional voices of our time, Richard and Barbara Debs Composer's Chair Kaija Saariaho has deservedly earned acclaim for her deeply affecting works. With performances by some of the finest artists from her native Finland—including soprano Karita Mattila and the Avanti! Chamber Orchestra—as well as Solistes XXI, the St. Louis Symphony, and The Cleveland Orchestra, Saariaho revealed the variety and nuances found in her orchestral, vocal, and choral works, while also introducing Carnegie Hall audiences to music by other composers whom she admires. Her residency also included a Professional Training Workshop with Finnish cellist Anssi Karttunen that explored compositional techniques for solo strings.



Making Music: Kaija Saariaho | March 5

Julien Jourdes



L'Arpeggiata | March 15

Julien Jourdes



Karita Mattila performing Kaija Saariaho's *Quatre Instants* with David Robertson and the St. Louis Symphony | March 10

Steve J. Sherman



The Chieftains with Paddy Moloney | March 17

Friday, March 16 at 8 PM | Stern/Perelman
The New York Pops

Steven Reineke, Music Director and Conductor
 Patti Austin, Vocalist
 Christopher Riddle, Guest Conductor

Saturday, March 17 at 7:30 PM | Weill
L'Arpeggiata

Christina Pluhar, Artistic Director and Theorbo

Saturday, March 17 at 8 PM | Stern/Perelman
The Chieftains with Paddy Moloney

With Special Guest The Low Anthem

Sunday, March 18 at 7:30 PM | Zankel
Ebène Quartet

Wednesday, March 21 at 7:30 PM | Zankel
Standard Time with Michael Feinstein

Michael Feinstein, Artistic Director
 With Special Guests
 Joyce Breach | Ron Raines
 With pianists Mike Renzi and Joseph Thalken

Wednesday, March 21 at 7:30 PM | Weill
Brentano String Quartet

Thursday, March 22 at 7:30 PM | Zankel
American Composers Orchestra

George Manahan, Music Director and Conductor
 Derek Bermel, Clarinet | Judith Bettina, Soprano
 Gabriel Kahane, Piano, Guitars, and Vocals
 Amy Porter, Flute

Friday, March 23 at 7:30 PM | Stern/Perelman
Yefim Bronfman, Piano

Friday, March 23 at 7:30 PM | Weill
Elias String Quartet

Friday, March 23 at 10 PM | Zankel
Citizen Cope

Saturday, March 24 at 10 PM | Zankel
Lo Còr de la Plana

Sunday, March 25 at 2 PM | Stern/Perelman
Les Violons du Roy

La Chapelle de Québec
 Bernard Labadie, Music Director and Conductor
 Ian Bostridge, Tenor | Neal Davies, Bass-Baritone
 Karina Gauvin, Soprano | Damien Guillon, Countertenor
 Nicholas Phan, Tenor
 Hanno Müller-Brachmann, Bass-Baritone

Sunday, March 25 at 7:30 PM | Zankel
Ensemble ACJW

David Robertson, Conductor | Moran Katz, Clarinet

Monday, March 26 at 7:30 PM | Zankel
So Percussion

Matmos | Dan Deacon, Electronics
 Cenk Ergün, Electronics | Beth Meyers, Viola

Tuesday, March 27 at 7:30 PM | Zankel
From the Top: The Achievers

Christopher O'Riley, Host | Lapis Quartet
 Madison Vest, Violin | Ashwin Krishna, Guitar
 Karen Baumgartner, Flute | Quinn Gomez, Piano

Tuesday, March 27 at 8 PM | Stern/Perelman
San Francisco Symphony

Michael Tilson Thomas, Music Director and Conductor
 St. Lawrence String Quartet | Joan La Barbara, Vocalist
 Meredith Monk, Vocalist | Jessye Norman, Soprano
 Jesse Stiles, Electronics | Yuval Sharon, Stage Director

Wednesday, March 28 at 8 PM | Stern/Perelman
San Francisco Symphony

Michael Tilson Thomas, Music Director and Conductor
 Emanuel Ax, Piano

Thursday, March 29 at 8:30 PM | Zankel
American Mavericks

Michael Tilson Thomas, Conductor and Host
 Members of the San Francisco Symphony
 Donato Cabrera, Conductor | Kiera Duffy, Soprano
 Paul Jacobs, Organ | Mason Bates, Electronica
 Newband
 Dean Drummond and Stefani Starin, Directors
 Young People's Chorus of New York City
 Francisco J. Núñez, Artistic Director

Friday, March 30 at 8:30 PM | Zankel
American Mavericks

Michael Tilson Thomas, Host
 Members of the San Francisco Symphony
 Jeffrey Milarsky, Conductor
 Meredith Monk & Vocal Ensemble, Vocalists
 Joan La Barbara, Vocalist
 Jeremy Denk, Piano
 Jesse Stiles, Electronics

American Mavericks

Touted by music writers as a major musical event of the New York City concert season, the revelatory *American Mavericks* series of concerts featured the work of groundbreaking composers who changed music forever, including John Cage, Steve Reich, John Adams, Meredith Monk, and more. Performances by Michael Tilson Thomas and the San Francisco Symphony—along with Jessye Norman and Emanuel Ax—formed the backbone of this momentous exploration of American music, which also featured performances by a new breed of musical interpreters including Alarm Will Sound, So Percussion, Matmos, Joan La Barbara, Jennifer Koh, Lisa Moore, JACK Quartet, and Jeremy Denk.

The two-week celebration went citywide with events at several of New York's leading cultural institutions, including free Carnegie Hall Neighborhood Concerts at Abrons Arts Center, the Brooklyn Public Library, and LaGuardia Performing Arts Center; film screenings at Anthology Film Archives; dance performances, visual art exhibits, and classes as part of the 2012 Biennial of the Whitney Museum of American Art; and concerts at (Le) Poisson Rouge and The Kitchen. In addition, Q2 Music—WQXR's online new-music station devoted to works of living composers—dedicated the entire month of March to coverage of the events, featuring playlists and programs curated by hosts with strong connections to contemporary music.



Jessye Norman with Michael Tilson Thomas and the San Francisco Symphony | March 27

April

Thursday, April 5 at 7:30 PM | Zankel

Ute Lemper
Vogler Quartet
Stefan Malzew, Piano, Clarinet, and Accordion

Wednesday, April 11 at 8 PM | Stern/Perelman
Mitsuko Uchida, Piano

Thursday, April 12 at 8 PM | Stern/Perelman
Orchestra of St. Luke’s
Iván Fischer, Conductor | Dominique Labelle, Soprano
Kelley O’Connor, Mezzo-Soprano
Joseph Kaiser, Tenor | Richard Paul Fink, Baritone
Musica Sacra | Kent Tritle, Music Director

Friday, April 13 at 7:30 PM | Zankel
Takács Quartet

Friday, April 13 at 8 PM | Stern/Perelman
The New York Pops
Steven Reineke, Music Director and Conductor
Essential Voices USA
Judith Clurman, Music Director and Conductor

Saturday, April 14 at 12:30 PM and 3:30 PM
Stern/Perelman
Family Concert: The New York Pops:
Jim Henson’s Musical World
Steven Reineke, Music Director and Conductor
John Tartaglia, Host
Essential Voices USA
Judith Clurman, Music Director and Conductor
Craig Shemin, Writer | Daniel Seth, Associate Director
Special guest appearances by
Pam Arciero | Bill Barretta | Alison Bartlett
Leslie Carrara-Rudolph | Kevin Clash | Stephanie D’Abruzzo
Rachel Dratch | Dave Goelz | Eric Jacobson | Rollie Krewson
Dr. Loretta Long | Lara MacLean | Sonia Manzano
Bob McGrath | Alan Muraoka | Roscoe Orman | Karen Prell
David Rudman | Nitya Vidyasagar | Matt Vogel
Paul Williams

Saturday, April 14 at 7:30 PM | Zankel
Takács Quartet

Wednesday, April 18 at 7:30 PM | Weill
Ensemble ACJW

Wednesday, April 18 at 8 PM | Stern/Perelman
European Union Youth Orchestra
Vladimir Ashkenazy, Music Director and Conductor
Itzhak Perlman, Violin

Thursday, April 19 at 7:30 PM | Weill
Brentano String Quartet

Friday, April 20 at 7:30 PM | Weill
Grace Francis, Piano

Friday, April 20 at 10 PM | Zankel
Cheikh Lô



Mitsuko Uchida | April 11



The Sound of Music | April 24

Saturday, April 21 at 10 PM | Zankel
Rudresh Mahanthappa, Alto Saxophone
and Laptop
David Gilmore, Electric Guitar | Rich Brown, Electric Bass
Anantha R. Krishnan, Mridangam | Gene Lake, Drums

Tuesday, April 24 at 8 PM | Stern/Perelman
The Sound of Music
Starring
Laura Osnes (Maria Rainer) | Tony Goldwyn (Captain Georg von Trapp) | Brooke Shields (Elsa Schraeder) | Patrick Page (Max Detweiler) | Stephanie Blythe (The Mother Abbess)
Cotter Smith (Herr Zeller) | Mary Michael Patterson (Liesl von Trapp) | Nick Spangler (Rolf Gruber) | Jake Montagnino (Friedrich von Trapp) | Olivia Knutsen (Louisa von Trapp)
Jacob Sutton (Kurt von Trapp) | Grace Lockett (Brigitta von Trapp) | Natalie Hawkins (Marta von Trapp) | Charlotte Knutsen (Gretl von Trapp) | Joy Hermalyn (Sister Berthe, Mistress of Novices) | Linda Mugleston (Sister Margaretta, Mistress of Postulants) | Faith Sherman (Sister Sophia) | Reed Birney (Admiral von Schreiber) | Joel Hatch (Franz, The Butler)
Veanne Cox (Frau Schmidt, The Housekeeper) | Daniel Truhitte (Baron Elberfeld) | Daniela DiGiallonardo (Baroness Elberfeld)
Nicholas Hammond, Kym Karath, Heather Menzies (Trio of the Saengerbund of Herwegen) | Christine DiGiallonardo, Nadia DiGiallonardo, Patty Goble, Amy Justman, Kevin Munhall, and the Women of the Mansfield University Concert Choir, Peggy Dettwiler, Director (Neighbors of Captain von Trapp, Nuns, Novices, Postulants, Contestants in the Festival Concert)
Orchestra of St. Luke’s
Women of the Mansfield University Concert Choir
Rob Fisher, Musical Director and Conductor
Gary Griffin, Director
Joshua Bergasse, Choreographer

Wednesday, April 25 at 8 PM | Stern/Perelman
Richard Goode, Piano

Thursday, April 26 at 7:30 PM | Zankel
Sandrine Piau, Soprano
Susan Manoff, Piano

Friday, April 27 at 7:30 PM | Weill
Pavel Haas Quartet

Friday, April 27 at 8 PM | Stern/Perelman
The Philadelphia Orchestra
Sir Simon Rattle, Conductor

Sunday, April 29 at 3 PM | Stern/Perelman
Garrick Ohlsson, Piano

Monday, April 30 at 7:30 PM | Zankel
Australian Chamber Orchestra
Richard Tognetti, Artistic Director
Dawn Upshaw, Soprano



Spring For Music: Alabama Symphony Orchestra | May 10

May

Tuesday, May 1 at 8 PM | Stern/Perelman
Matthias Goerne, Baritone
Leif Ove Andsnes, Piano

Wednesday, May 2 at 7:30 PM | Zankel
András Schiff, Piano

Wednesday, May 2 at 8 PM | Stern/Perelman
New York Philharmonic
Alan Gilbert, Music Director and Conductor

Thursday, May 3 at 6 PM | Zankel
Making Music: Jörg Widmann
Jörg Widmann, Clarinet | Claron McFadden, Soprano
András Schiff, Piano | Shai Wosner, Piano
The Parker Quartet
Jeremy Geffen, Series Moderator

Thursday, May 3 at 8 PM | Stern/Perelman
Evgeny Kissin, Piano

Saturday, May 5 at 7:30 PM | Zankel
Salzburg Marionette Theater
András Schiff, Piano

Sunday, May 6 at 1 PM | Stern/Perelman
Family Concert: Salzburg Marionette Theater
András Schiff, Piano
Charlotte Blake Alston, Pre-Concert Artist

Sunday, May 6 at 3 PM | Stern/Perelman
Louis Lortie, Piano

Monday, May 7 at 7:30 PM | Stern/Perelman
Spring For Music: Houston Symphony
Hans Graf, Music Director
Mikhail Svetlov, Bass

Tuesday, May 8 at 7:30 PM | Stern/Perelman
Spring For Music: Edmonton Symphony Orchestra
William Eddins, Music Director | Angela Cheng, Piano
Juliette Kang, Violin | Denise Djokic, Cello
Jens Lindemann, Trumpet

Wednesday, May 9 at 7:30 PM | Stern/Perelman
Spring For Music: New Jersey Symphony Orchestra
Jacques Lacombe, Music Director
Hila Plitmann, Soprano | Marc-André Hamelin, Piano
Men of the Westminster Symphonic Choir
Joe Miller, Director

Thursday, May 10 at 7:30 PM | Stern/Perelman
Spring For Music: Alabama Symphony Orchestra
Justin Brown, Music Director and Principal Conductor
Quattro Mani

Friday, May 11 at 7:30 PM | Stern/Perelman
Spring For Music:
Milwaukee Symphony Orchestra
Edo de Waart, Music Director
Xiaoduo Chen, Soprano
Meng Meng, Qingyi, and Soprano II
Wu Man, Pipa | Hong Wang, Erhu
Yang Yi, Zheng

Friday, May 11 at 7:30 PM | Weill
Nadine Sierra, Soprano
Carol Wong, Piano

Saturday, May 12 at 7:30 PM | Stern/Perelman
Spring For Music: Nashville Symphony
Giancarlo Guerrero, Music Director
Tracy Silverman, Electric Violin

Saturday, May 12 at 8 PM | Zankel
Christian Gerhaher, Baritone
András Schiff, Piano

Thursday, May 17 at 8 PM | Stern/Perelman
Emanuel Ax, Piano

Friday, May 18 at 8 PM | Stern/Perelman
The Philadelphia Orchestra
Charles Dutoit, Chief Conductor
Maria João Pires, Piano
The Philadelphia Singers Chorale
David Hayes, Director

Sunday, May 20 at 3 PM | Stern/Perelman
The MET Orchestra
David Robertson, Conductor
Christian Tetzlaff, Violin

Wednesday, May 23 at 8 PM | Stern/Perelman
The Cleveland Orchestra
Franz Welser-Möst, Music Director and Conductor
Gil Shaham, Violin

Thursday, May 24 at 8 PM | Stern/Perelman
The Cleveland Orchestra
Franz Welser-Möst, Music Director and Conductor
Nina Stemme, Soprano | Eric Owens, Bass-Baritone
Rudolf Schasching, Tenor
Jane Henschel, Mezzo-Soprano
Garrett Sorenson, Tenor
Jennifer Johnson Cano, Mezzo-Soprano
Rodell Rosel, Tenor | Matthew Plenk, Tenor
Bryan Griffin, Tenor | James Kryshak, Tenor
Brian Keith-Johnson, Baritone
Sam Handley, Bass-Baritone
Darren Stokes, Bass-Baritone
Evan Boyer, Bass

Tuesday, May 29, 2012 at 8 PM | Stern/Perelman
Lang Lang, Piano



Franz Welser-Möst, Nina Stemme, Eric Owens, and The Cleveland Orchestra | May 24



Lang Lang | May 29

Weill Music Institute

Reflecting Carnegie Hall’s mission to bring great music to the widest possible audience, the Weill Music Institute (WMI) creates a broad range of dynamic music education and community programs each year as a leader in its field, serving people from all walks of life through a variety of engaging initiatives.

More than 300,000 people took part in WMI programs and online initiatives this season—in New York City, across the US, and around the world. WMI also continued to be a trailblazer in online education, reaching tens of thousands of people nationally and globally through its Musical Exchange program for young musicians and its Online Resource Center, which provides much-needed tools for educators worldwide.

Through WMI, Carnegie Hall has increasingly served a wide range of constituents across the country. The popular Link Up program provides curriculum and concert materials, as well as other resources that help to connect a growing number of orchestras across the country with schools in their communities. The Carnegie Hall Royal Conservatory Achievement Program, a set of sequenced courses and system of assessment providing a recognized national standard of musical success for people studying music privately at all levels, completed its first full year during the 2011–2012 season. Carnegie Hall also announced the creation of the National Youth Orchestra of the United States of America, which, beginning in summer 2013, will bring together America’s finest young players for training, coaching, and service as dynamic international musical ambassadors for the US.

Chris Lee



Family Sing: Songs of Solomon | March 3

School Programs

Musical Explorers (Elementary School)

Musical Explorers: My City, My Song

December 9, 12–15, 2011 | Zankel
Gaida Hinnawi, Vocalist | Tareq Abboushi, Buzuk
Zafer Tawil, Derbakeh | Celso Duarte, Harp
Violeta Ortega, Jarana | Alfredo “Godo” Herrera, Jarana
Rodrigo Duarte, Cello | Karlie Bruce, Vocalist
Jerome Jennings, Percussion | Chris Parrello, Guitar
Kevin Thomas, Bass | Shane Schag, Piano

May 7–11, 2012 | Zankel
Eva Salina Primack, Vocalist | Ariadne Greif, Soprano
Peter Stan, Accordion | Yuliy Yordanov, Tupan
Teddy Weber, Guitar | Michael Farkas, Vocalist
Seth Travins, Bass | Emeline Michel, Vocalist
Carol Hodge, Drums | Yayoi Ikawa, Piano
Adrien Legagneur, Bass

Students in music and general classrooms discovered New York City’s diverse heritage of song.

Link Up (Elementary School)

May 22–23, 25, 2012 | Stern/Perelman
The Orchestra Sings
Orchestra of St. Luke’s | Rossen Milanov, Conductor
Thomas Cabaniss, Host | David Templeton, Vocalist
Shanna Lesniak, Vocalist | Rachel Kara Perez, Vocalist
Alvin Crawford, Vocalist | Rogerio Boccato, Percussionist
Susan Fenichell, Director
Dan Scully, Video and Projection Designer
Mary Louise Geiger, Lighting Designer
Hilary Easton, Choreographer
Rodica Gabriela Bordeianu, Choreographer and Dancer

Students in music classrooms sang, played the recorder, composed, and explored melodies from a range of colorful orchestral repertoire.



Link Up | May 25

Link Up National (Elementary School)

Acadiana Symphony Orchestra (Louisiana)
Albany Symphony Orchestra (Georgia)
Austin Symphony Orchestra (Texas)
Carnegie Hall–Lewisburg, West Virginia (West Virginia)
Dallas Symphony Orchestra (Texas)
El Paso Symphony Orchestra (Texas)
Elgin Symphony Orchestra (Illinois)
The Florida Orchestra (Florida)
Fort Wayne Philharmonic (Indiana)
Fort Worth Symphony Orchestra (Texas)
Gulf Coast Symphony (Mississippi)
Hartford Symphony Orchestra (Connecticut)
Jacksonville Symphony Orchestra (Florida)
Kansas City Symphony (Missouri)
Louisiana Philharmonic Orchestra (Louisiana)
Meridian Symphony Orchestra (Mississippi)
Mississippi Arts Commission (Mississippi)
Mississippi Symphony Orchestra (Mississippi)
Omaha Symphony (Nebraska)
Rhode Island Philharmonic Orchestra (Rhode Island)
Sacramento Philharmonic Orchestra (California)
South Arkansas Symphony Orchestra (Arkansas)
South Carolina Philharmonic (South Carolina)
Spartanburg Philharmonic Orchestra (South Carolina)
Spokane Symphony (Washington)
St. Louis Symphony (Missouri)
Tupelo Symphony Orchestra (Mississippi)
The University of Southern Mississippi Symphony Orchestra (Mississippi)
Vocal and Instrumental Teaching Artists Academy (VITA) (California)
West Michigan Symphony (Michigan)

Carnegie Hall provided free, high-quality curriculum and administrative resource materials to orchestras nationwide, helping them to connect with schools in their communities. This program allowed students to explore musical concepts through select orchestral works and compositional activities while preparing to perform along with the orchestra in an interactive culminating concert.

Perelman American Roots (Middle School)

May 2, 2012 | Harlem Stage
African American Song: Uniting Voices
Songs of Solomon
Chantel R. Wright, Director

Students in social studies and choral classrooms explored the connection of African American song to history and current events, as well as how it continues to unite people in today’s world.

Count Me In (Middle School)

Yearlong activities
Young singers in at-risk neighborhoods are given the opportunity to build basic singing skills in preparation for auditions that can connect them to further musical opportunities. This year, Count Me In helped connect 13 eighth-grade students in Brooklyn and the Bronx (87% of eligible students) to arts-focused high schools.



Count Me In—Bronx
November 5

Count Me In: A Middle Schooler Finds His Voice

Thirteen-year-old Jordan Juliano was a typical eighth-grade student at MS 57 in the Bedford-Stuyvesant section of Brooklyn. A shy kid who tended to go with the flow of his friends, he wasn’t known as an outgoing student amongst his classmates and teachers. Jordan managed to find his voice with the help of Count Me In, a new after-school choral initiative designed by the Weill Music Institute. During the fall pilot program, Count Me In served 53 students from five underserved New York City public schools, including Jordan.

Jordan studied music for the first time with sessions that focused on sight-singing, rhythm, pitch, and diction. The intensive workshop helped Jordan blossom as a vocalist, developing a three-octave range while becoming more outgoing and making connections with fellow participants. Celeste Douglass Wheeler, principal at MS 57, noticed the change. “The school community has made Jordan and the other students celebrities—these are our stars, these are our singers. Anytime anyone comes into my building, I am excited to show them what Count Me In has done for us.”

“And for my students, they are no longer just focusing on now; they are focusing on tomorrow,” she added. “They are saying to themselves, ‘If I want to be a singer or a dancer, what do I have to do now in middle school to make that happen?’.” Jordan was one of those students who took full advantage of the program to prepare for performing arts high school auditions.

The preparation that Jordan received from Count Me In was instrumental to his acceptance to the Frank Sinatra School of the Arts in Astoria, Queens, where he started as a freshman in fall 2012. Jordan also continues to develop his musicianship skills by participating in Songs of Solomon, a community-based choir led by his mentor from Count Me In.

The Carmina Burana Choral Project: A Once-in-a-Lifetime Debut

When 14-year-old composer Gabe Smallwood responded to a national call from the Weill Music Institute seeking young composers to participate in its Creative Learning Project this season, he had no idea how the experience would change his musical life. Smallwood, a prodigious young man hailing from the small town of Florence, South Carolina, was selected as one of three high school composers to create new music based on themes and compositional techniques from the major work of this year’s project: Carl Orff’s *Carmina Burana*. The eighth-grade student, who plays the French horn and piano in community ensembles in his sleepy hometown, was also quietly composing works in his free time. “I love that music itself expresses ideas and feelings that words cannot,” he said. “I compose because I have to. How can I resist a love for something that is so passionate and so alive?”

After completing his work following coachings with Weill Music Institute composers, Smallwood traveled to New York City to work with the musicians who would perform it, the outstanding Orchestra of St. Luke’s under the direction of leading conductor David Roberson and a choir of 150 student singers from New York City public schools.

“Never before have I tackled the task of writing for a full orchestra and choir,” he said. “It has been an amazing challenge and opportunity.” Not only that, Smallwood had never heard any of his compositions performed live prior to his Carnegie Hall debut in front of a sold-out audience in Stern Auditorium / Perelman Stage. This groundbreaking moment in the budding composer’s life has led to other great opportunities: He has gone on to study at the prestigious conservatory of the South Carolina Governor’s School for the Arts and Humanities Discovery Program, building on the invaluable experience received from his work with Carnegie Hall’s Weill Music Institute.

Creative Learning Project

February 5, 2012 | Stern/Perelman

The Carmina Burana Choral Project

Orchestra of St. Luke’s | David Robertson, Conductor
Celena Shafer, Soprano | Lawrence Brownlee, Tenor
David Adam Moore, Baritone | Joe Miller, Choral Preparer
Leslie Stifelman, Music Supervisor
Dianne Berkun, Choral Preparer
S. Katy Tucker, Video and Projection Design
Nicole Pearce, Lighting Design
Choirs from
Brooklyn High School of the Arts | Brooklyn Technical High School | Fordham High School for the Arts | Forest Hills High School | Fort Hamilton High School | Frank Sinatra School of the Arts | Mark Twain I.S. 239 for the Gifted & Talented
Scarsdale High School | Songs of Solomon

Approximately 250 singers from New York City high schools performed *Carmina Burana* with the Orchestra of St. Luke’s conducted by David Robertson. In addition, three high school-aged composers were selected to write new works for chorus and orchestra based on the musical themes of *Carmina Burana*. These new works were premiered by 150 additional students on the first half of the program.

February 16, 2012 | (Le) Poisson Rouge

February 17, 2012 | 92nd Street Y

February 18, 2012 | Zankel

Carnegie Hall Choral Institute

Young People’s Chorus of New York City
Francisco J. Núñez, Artistic Director and Founder
John Schaefer, Host | JACK Quartet
Courtenay Budd, Soprano | Jon Holden, Piano
Dov Scheindlin, Viola | Joshua Roman, Cello
Jacqueline Kerrod, Harp | Chris Thompson, Percussion
Dominick DiOrio, Conductor (Houston, Texas)
Rebecca Lord, Conductor (Los Angeles, California)
Stephanie Mowery, Conductor (Syracuse, New York)
Ana Alvarez, Conductor (Toronto, Ontario)
Karen Cooksey, Conductor, (Los Angeles, California)
Tian Hui Ng, Conductor (South Hadley Falls, Massachusetts)
Jennah Delp, Conductor (Los Gatos, California)
Troy David Robertson, Conductor (Ithaca, New York)
Janet Galván, Guest Conductor (Ithaca, New York)
Philip Brunelle, Guest Conductor (Minneapolis, Minnesota)
Elizabeth Núñez, Guest Conductor (New York, New York)
Grant Gershon, Guest Conductor (Los Angeles, California)
Interviews with and works by
John Corigliano | Douglas J. Cuomo | Joan Tower
Michael Gordon | John Corigliano | David Del Tredici
Derek Bermel | Douglas J. Cuomo | Bright Sheng
Paquito D’Rivera

The Carnegie Hall Choral Institute is an annual gathering of school choral teachers and community choir directors. This season, the institute collaborated with Francisco Núñez and the Young People’s Chorus of New York City in support of their Transient Glory initiative, which focuses on teacher training and conducting as well as performances of newly commissioned choral works for young voices.

Music Blueprint Model School (Elementary and Middle School)

Yearlong activities

PS/MS 161 Manhattan Pedro Albizu Campos
A school partnership that embraces the objectives of the New York City Department of Education’s Blueprint for Teaching and Learning in the Arts

School Residency Program (Elementary and Middle School)

Yearlong activities

An ongoing collaboration between select schools and teaching artists that engages students in Carnegie Hall’s school programs and creative musical work

Arts Achieve (Elementary, Middle, and High School)

Yearlong activities

A five-year partnership between New York City’s leading arts institutions, the New York City Department of Education, and its public schools, Arts Achieve is designed to improve student achievement in the arts through the development and implementation of balanced arts assessments that are aligned with high student content and academic achievement standards. Carnegie Hall is the lead music partner on this project.



The Carmina Burana Choral Project | February 5

Jennifer Taylor



The Carmina Burana Choral Project | February 5

Musical Connections: Finding a Brighter Future Through Music

Having been involved in the court system for nearly five years, Andre Smith (whose name has been changed to protect his identity) had been detained at Horizon Juvenile Center, a secure detention facility for court-involved youth in the South Bronx, when he first began participating in creative projects offered by the Weill Music Institute’s Musical Connections program.

At Horizon Juvenile Center, residents took part in a two-week workshop in which they wrote their own songs with the help of professional musicians from the Musical Connections roster of artists. The workshop built up to a performance for participants’ families, facility staff, and other residents. Each participant also received high school credit, a professionally produced CD of the concert, and a recommendation letter in their case files and school applications that described their positive contributions and areas of growth.

Andre participated in several more workshops during his time at Horizon, allowing him to discover new aspects of himself, collaborate in positive ways with others, and develop vital leadership skills that could be used in his adult life. “I can attest to the remarkable transformation Andre has made from a rather hesitant participant to a supportive and strong leader,” said Chris Marianetti of Found Sound Nation, one of the musical groups on the Musical Connections roster that mentored Andre. Along with other participants, Andre explored new, constructive ways to communicate, express himself, and relate to his family and community by developing his creative interests and talent through this workshop.

After Andre was released from detention, he kept in touch with one of his Musical Connections mentors, Ricky Nigaglioni of Found Sound Nation. Ricky has encouraged Andre to stay connected to music by joining an arts collective and performance space in their neighborhood of the South Bronx, which provides an opportunity for Andre to continue his creative interests.

Elizabeth Ferguson



Found Sound Nation at Crossroads Juvenile Center | December 9



Found Sound Nation and Falu at Crossroads Juvenile Center
December 9

Community and Family Programs

Neighborhood Concerts

In partnership with local institutions, Carnegie Hall has a 36-year tradition of bringing free concerts to neighborhoods throughout the five boroughs of New York City. Each season, some of the best musicians from throughout the city and around the world perform classical, jazz, and world music. The Neighborhood Concert Series includes five participatory Community Sings, in which audiences are invited to become part of the performance with professional choirs.

The McGraw-Hill Companies CarnegieKids

These free and interactive 45-minute concerts in all five boroughs feature songs, movement, and instrument demonstrations and create opportunities for musical creativity and play.

Musical Connections

Committed to serving people in challenging circumstances, Musical Connections provides free interactive performances, creative projects, and artist residencies in homeless shelters, correctional facilities, healthcare settings, and senior service organizations. In the 2011–2012 season, Musical Connections reached over 8,500 people with limited access to live music through programming created by Carnegie Hall in partnership with host organization staff, multiple government agencies, and first-class musicians. Professional development is an integral part of Musical Connections, and specifically designed workshops are offered to the artists to prepare them for the unique nature of this work.



Toomai String Quintet at Jacobi Medical Center
October 20



Family Concert: The New York Pops:
Jim Henson’s Musical World | April 14

Family Concerts

Family Concerts continued to offer parents a wonderful way to introduce children ages 5–10 to live performances of music from around the world.

December 11, 2011 | Zankel

Celso Duarte

Celso Duarte, Musical Director, Harp, Guitarra de Son, Jarana, Charango, and Vocals
Violeta Ortega, Vocals, Jarana and Zapateado
Alfredo “Godo” Herrera, Vocals, Jarana and Quijada
Rodrigo Duarte, Electric Cello | Samuel Torres, Percussion
Russell Granet, Host

January 22, 2012 | Zankel

Ensemble ACJW

Julietta Curenton, Flute | Alicia Lee, Clarinet | Greg DeTurck, Piano
Anna Elashvili, Violin | Saeunn Thorsteinsdottir, Cello
Charlotte Blake Alston, Host

March 3, 2012 | Zankel

Family Sing: Songs of Solomon

Songs of Solomon | Chantel R. Wright, Conductor
Thomas Cabaniss, Host

April 14, 2012 | Stern/Perelman

The New York Pops: *Jim Henson’s Musical World*

The New York Pops
Steven Reineke, Music Director and Conductor
John Tartaglia, Host
Essential Voices USA | Judith Clurman, Music Director and Conductor

Craig Shemin, Writer
Daniel Seth, Associate Director

Special guest appearances by
Pam Arciero | Bill Barretta | Alison Bartlett
Leslie Carrara-Rudolph | Kevin Clash | Stephanie D’Abruzzo
Rachel Dratch | Dave Goelz | Eric Jacobson | Rollie Krawson
Dr. Loretta Long | Lara MacLean | Sonia Manzano | Bob McGrath
Alan Muraoka | Roscoe Orman | Karen Prell | David Rudman
Nitya Vidyasagar | Matt Vogel | Paul Williams

May 6, 2012 | Zankel

Salzburg Marionette Theater

András Schiff, Piano

Salzburg Marionette Theater | András Schiff, Piano
Charlotte Blake Alston, Pre-Concert Artist

Professional Programs



Pete Checchia

András Schiff Master Class | February 19

Professional Training Workshops

Young artists ages 18–35 explore many aspects of musical life with leading artists of our time in these intense, tuition-free workshops. Workshops often culminate in a Carnegie Hall performance, and select sessions are recorded in order to reach a broader online audience.

January 15–19, 2012

Marilyn Horne with Renée Fleming and Graham Johnson **The Song Continues: Exploring the Art of Song**

For Singers

Marilyn Horne was joined by soprano Renée Fleming and collaborative pianist Graham Johnson to lead master classes for her annual workshop and festival of song. In addition to singing in one of the master classes, participants received private coaching from Warren Jones and were invited guests for the full week of song programs.

February 16–21, 2012

András Schiff: Bach, Bartók, and Beyond

For Solo Pianists

Carnegie Hall *Perspectives* artist András Schiff led an intensive workshop that explored the piano suites of Bach and Bartók, culminating in a master class and a performance in Weill Recital Hall.

February 23–24, 2012

Berliner Philharmoniker Master Classes: Mastering Orchestral Repertoire

For Woodwind and Brass Players

Members of the world-renowned Berliner Philharmoniker led two days of master classes and panel discussions that focused on orchestral repertoire and audition strategies.

Andreas Blau, Flute | Albrecht Mayer, Oboe
Wenzel Fuchs, Clarinet | Stefan Schweigert, Bassoon
Stefan de Leval Jezierski, Horn | Gábor Tarkövi, Trumpet
Thomas Leyendecker, Trombone
Alexander von Puttkamer, Tuba

March 6–12, 2012

Kaija Saariaho with Anssi Karttunen: New Works for Strings

For Composers and Solo String Players (violin, viola, cello, and bass)

Kaija Saariaho, 2011–2012 holder of Carnegie Hall’s Richard and Barbara Debs Composer’s Chair, and Finnish cellist Anssi Karttunen led a workshop that culminated in a Zankel Hall performance of repertoire by Saariaho and new works by participating composers.



Jennifer Taylor

Berliner Philharmoniker Master Class | February 23

March 17–18, 2012

L’Arpeggiata: Baroque Master Classes

For Baroque Singers, Instrumentalists, and Ensembles

Christina Pluhar and members of the *Perspectives* ensemble L’Arpeggiata—including violinist Veronika Skuplik and cornettist Doron David Sherwin—led master classes in ensemble playing, improvisation, and 17th-century vocal techniques.

Teaching Artist Collaborative

Weill Music Institute teaching artists of diverse musical backgrounds attend professional development workshops in support of their programmatic work in school and community settings to create experiences that encourage curiosity, stimulate lifelong learning, and inspire creativity.

The Achievement Program

Launched in March 2011 by Carnegie Hall and Canada’s Royal Conservatory, The Achievement Program provides a national standard for musical achievement for people of all ages studying music privately in the US, offering a sequential course of study from beginner through advanced levels. Modeled on the acclaimed examination system of The Royal Conservatory, the program was created in response to feedback from parents and teachers throughout the US who desired a top-quality, nationally recognized system to track students’ musical progress and celebrate their accomplishments.

WMI Digital

Musical Exchange (Ages 13–25)

Yearlong Activities

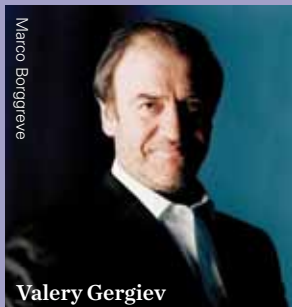
Carnegie Hall invited teens to connect with peers from around the world and share their musical performances through the Weill Music Institute’s global online community. Musical Exchange focused on musical sharing and international collaboration, connecting young musicians from around the world in an online program. Participants during the 2011–2012 season included students from the US, Mexico, Tunisia, India, Indonesia, Turkey, Taiwan, the United Kingdom, Algeria, Egypt, Canada, Morocco, Australia, France, Iraq, Hungary, Germany, Portugal, and Italy. The community currently has over 1,500 members, and had 25,500 unique visitors in 2011–2012.

Online Resource Center

Carnegie Hall’s Online Resource Center offers a rich collection of online educational materials, a multimedia library, and interactive resources from WMI programs. Designed for use by educators, young artists, and teaching artists, the Online Resource Center helps make WMI’s programs broadly accessible nationally and internationally through this online digital library. The center currently holds nearly 1,000 items and has over 100,000 unique users annually.



National Youth Orchestra of the United States of America: An Exciting New Start



Valery Gergiev



Joshua Bell

In January 2012, Carnegie Hall announced the establishment of a sensational new initiative—the National Youth Orchestra of the United States of America (NYO-USA). Starting in summer 2013, NYO-USA will bring together 120 of the brightest young players from across the country to serve as dynamic international musical ambassadors. Following a comprehensive audition process and a two-week training residency with leading musicians from top American orchestras at State University of New York, Purchase College, these remarkable teenagers will embark on an international tour to Moscow, St. Petersburg, London, and Washington, DC—some of the great music capitals of the world. Internationally acclaimed conductor

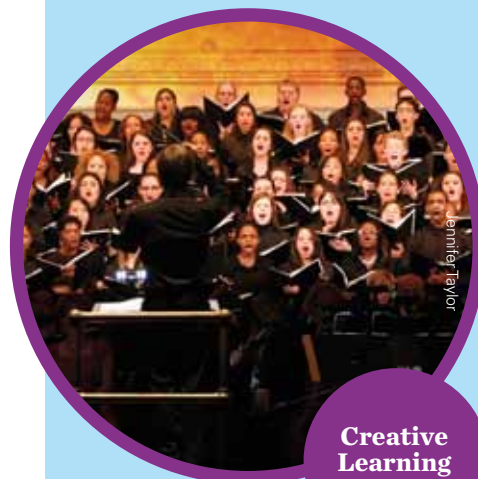
Valery Gergiev and renowned violinist Joshua Bell lead these young musicians in performances they will likely never forget.

“We are creating the National Youth Orchestra of the USA in order to offer the finest young instrumentalists nationwide the inspirational opportunity to make and share music at the highest level,” said Clive Gillinson, Carnegie Hall’s Executive and Artistic Director and former participant in a similar program in his native England. “We are confident that the tremendous talent, energy, and enthusiasm found within America’s young players will make the NYO-USA experience a remarkable one, both for participants and audiences around the world.”

This exciting new initiative has been met with praise across the country. “For many years, I have been pining for there to be a national youth orchestra in this country,” said Steven Payne, executive director of the Youth Orchestras of San Antonio (YOSA). “So many other programs will benefit from the model you are providing. The amazing young musicians you will be bringing together will provide inspiration for so many children around the country.”

Each dot on the map represents the site of a WMI program held during the 2011–2012 season.

- Musical Explorers
- Link Up
- Perelman American Roots
- Count Me In
- Creative Learning Project
- Music Blueprint Model School
- Arts Achieve
- Neighborhood Concert Series
- The McGraw-Hill Companies CarnegieKids
- Musical Connections
- Family Concerts
- Community Sings



Creative Learning Project



Musical Explorers



Count Me In



Neighborhood Concert Series

Programs of the Weill Music Institute reached teachers and students around the country and throughout the world during the 2011–2012 season.

Arkansas, California, Connecticut, Florida, Georgia, Illinois, Indiana, Louisiana, Massachusetts, Michigan, Minnesota, Missouri, Mississippi, Nebraska, New Jersey, New York, Rhode Island, South Carolina, Texas, Washington, West Virginia | India, Indonesia, and Mexico

The Academy

A program of Carnegie Hall, The Juilliard School, and the Weill Music Institute in partnership with the New York City Department of Education

Now in its fifth year, The Academy continued to support young professional musicians by helping them develop their careers as exemplary performers, cutting-edge programmers, and dedicated teachers by providing opportunities not only to perform at the highest level, but also to extend their music making from the concert stage into schools and the larger community. In addition to a robust program of professional development and performance opportunities with Ensemble ACJW, fellows shared their artistry during the school year by partnering with a New York City public school and creating interactive performances for sites that wouldn't otherwise have access to live music through the Weill Music Institute's Musical Connections program. Spring 2012 saw the completion of the second year of the program by 18 Academy fellows who, as they proceed with their professional careers, will continue to redefine what it means to be a contemporary musician in the classical music world.

Jennifer Taylor



Bite-Sized ACJW: Shreds and Sings at (Le) Poisson Rouge | June 10

2011–2012 Fellows of The Academy

- Hamilton Berry, Cello
- Paul Won Jin Cho, Clarinet
- Yves Dharamraj, Cello
- Keats Dieffenbach, Violin
- Margaret Dyer, Viola
- Brian Ellingsen, Bass
- Emily Popham Gillins, Violin
- Alexey Gorokholinsky, Clarinet
- Richard Harris, Trombone
- Shelley Monroe Huang, Bassoon
- David Kaplan, Piano
- Moran Katz, Clarinet
- ToniMarie Marchioni, Oboe
- Carl Oswald, Oboe
- Marina Radiushina, Piano
- Nathan Schram, Viola
- Yoobin Son, Flute
- Leelanee Sterrett, Horn

Ensemble ACJW

The fellows performed more than 20 concerts this season as Ensemble ACJW, among them several concerts in Weill Recital Hall and Zankel Hall that featured collaborations with leading conductors Pablo Heras-Casado and David Robertson, premieres of Carnegie Hall commissions by Ryan Gallagher and members of Sleeping Giant, and a special concert celebrating Carnegie Hall’s 120th anniversary.

In addition to appearances at Carnegie Hall and The Juilliard School’s Paul Hall, the ensemble, hailed as “the new face of classical music for New York” by *The New York Times*, performed at venues throughout New York City. Academy musicians also continued a special tradition that has existed since The Academy’s inception by traveling to Skidmore College for residencies that include master classes with student musicians and composers, appearances at area schools and community centers, and informal concerts throughout the Saratoga Springs community. This fruitful collaboration blossomed further this spring when student narrators and dancers joined the fellows for a multi-disciplinary performance of Igor Stravinsky’s *Histoire du soldat*.

Academy fellows also created interactive chamber music concerts, which they performed in Academy partner schools as well as at non-traditional community venues through the Weill Music Institute’s Musical Connections program. This citywide initiative brings live music to people coping with challenging social, physical, and emotional circumstances in healthcare settings, correctional and juvenile-justice facilities, and senior-service organizations.



David Robertson with Ensemble ACJW in Zankel Hall | March 25

Chronological Listing of Ensemble ACJW Events

October 18–22, 2011 Skidmore College Residency Arthur Zankel Music Center, Helen Filene Ladd Concert Hall	January 13, 2012 Paul Hall, The Juilliard School	April 18, 2012 Weill Recital Hall
October 25, 2011 Weill Recital Hall	February 7–11, 2012 Skidmore College Residency Arthur Zankel Music Center, Helen Filene Ladd Concert Hall	April 22, 2012 Ukrainian Institute of America
November 17, 2011 Paul Hall, The Juilliard School	February 14, 2012 Weill Recital Hall	April 29, 2012 (Le) Poisson Rouge
November 20, 2011 Presbyterian Church of Chatham	February 28, 2012 (Le) Poisson Rouge	May 3, 10, 18, and 24, 2012 Trinity Wall Street
December 1, 2011 Weill Recital Hall	March 15, 2012 Paul Hall, The Juilliard School	May 31, 2012 Paul Hall, The Juilliard School
December 4, 2011 Our Saviour’s Atonement Lutheran Church	March 25, 2012 Zankel Hall	June 3, 2012 Our Saviour’s Atonement Lutheran Church
December 16, 2011 Zankel Hall	April 15, 2012 Our Saviour’s Atonement Lutheran Church	June 10, 2012 (Le) Poisson Rouge

Instilling “a Dream of Musical Performance”

“The Academy fellow has challenged our fourth- and fifth-grade students to believe that with practice and determination they can attain a dream of musical performance, and has given me opportunities to expand my teaching skills. Occasionally I have been taken out of my comfort zone only to discover my students relish the opportunity to experience something new. My teaching and our school’s music program have been enriched by this partnership. Most importantly, my students have received an experience in music that they will carry with them throughout their lives. I know I will.”

—Audrey Mullen, Academy Partner Teacher at PS21, Edward Hart Elementary School



Paul Won Jin Cho assists the clarinet section during band practice at PS200, Benson School | November 22

Inspiring Students to “Dream Big and Practice Hard”

“The Academy offers New York City music educators a unique way of improving the level of musicianship in our classrooms. Through guided listening lessons, the children not only heard world-class music, but were able to express their emotional reactions to the music in an encouraging atmosphere. Through our partnership, we have been able to offer support to struggling students through extra-help sessions and sectionals. Our two-year partnership with The Academy has helped the students attain a level of playing far above that of previous years, and inspired my students to dream big and practice hard.”

—Jennifer Schecter, Academy Partner Teacher at MS158, Marie Curie Middle School

Partnership with New York City Public Schools

The Academy’s in-school residency continues to represent one of the largest in-depth collaborations between a cultural institution and New York City public schools. Over the course of the school year, the fellows brought mastery of their instruments and a performer’s perspective to music classrooms in all five boroughs in an effort to build students’ musical skills through instrumental teaching, creative projects, and performances. In addition to the performance residency, fellows also created and performed in interactive ensemble concerts with other Academy colleagues in each of the schools. To conclude the season, over 400 students from 17 partner schools gathered at The Juilliard School to perform for parents, friends, students, teachers, and school administration at the inaugural Academy Partner School Performance Festival—a day of special group performances that celebrated the conclusion of the two-year partnership and put the spotlight on students’ musical accomplishments.



Cello sectional with Yves Dharamraj at Brooklyn High School of the Arts | April 18

Increasing “Self-Esteem and Pride”

“From the very beginning, our partnership with The Academy made all of us at Brooklyn High School of the Arts feel special. The Academy fellow and I worked together well in assessing the needs and goals of the orchestra students, collaborated well in creating meaningful lessons, and set about creating a positive culture within the group. The knowledge I’ve gained of string instrument technique from the fellow has allowed me to move forward confidently in teaching string instruments. By the end of the two-year partnership, the string program at BHSA had been transformed into an excellent performing ensemble with increased self-esteem and pride.”

—John Scandone, Academy Partner Teacher at Brooklyn High School of the Arts

Academy Partner Schools

2011–2012 Season

Bronx

PS157 Grove Hill Elementary School
Fordham High School for the Arts

Brooklyn

PS282 Park Slope Elementary School
PS241 The Emma L. Johnston Elementary School
PS130 Parkside Elementary School
PS112 Lefferts Park Elementary School
PS75 The Maya Cortiella Elementary School
PS200 Benson Elementary School
PS135 Sheldon A Brookner Elementary School
MS51 William Alexander Middle School
PS207 Elizabeth G. Leary Elementary School
Brooklyn High School of the Arts

Manhattan

PS46 The Arthur Tappan Elementary School

Queens

PS63 Old South Elementary School
PS21 The Edward Hart Elementary School
PS13 Clement C Moore Elementary School
MS137 America’s School of Heroes
MS158 Marie Curie Middle School

Staten Island

IS61 William A. Morris Middle School
Curtis High School

International Residencies and Alumni

The Academy’s relationship with its fellows continues long after they complete the program. Through its growing number of talented alumni, The Academy has expanded its reach to national and international audiences by participating in residencies created in partnership with Carnegie Hall. Alumni returned to perform at Germany’s Festspiele Mecklenburg-Vorpommern as well as at the Abu Dhabi Music and Arts Festival, where they presented a series of performances and educational events.

The alumni also conducted residencies in Mexico and India thanks to funding from the US Department of State. These included a Mexican artist exchange with Centro Nacional de las Artes and Instituto Nacional del Bellas Artes y Literatura in Mexico City, as well as a tour to Mumbai, India. During the residency in India, alumni gave interactive performances at local schools, performed at the National Centre for Performing Arts, led workshops for music teachers and musicians, and collaborated with professional Indian musicians from various musical traditions at BlueFrog club in Mumbai.

As a testament to the lasting impact on its alumni, in April 2012, 46 alumni musicians from The Academy formed a new independent artist collective called The Declassified. The New York-based collective will bring performances and creative experiences to schools, hospitals, prisons, and bars in addition to concert halls. The musicians will also continue to be featured by Carnegie Hall in curated residencies, and are included on the artist roster of the Hall’s Musical Connections program.

Studio Towers Renovation Project

Carnegie Hall's Studio Towers Renovation Project continued to take shape this season, progressing on schedule and on budget. Our deepest gratitude goes to the City of New York, the State of New York, Judith and Burton P. Resnick, and Joan and Sanford I. Weill for their leadership support of this major initiative. This massive undertaking will enable Carnegie Hall to transform its facilities, ensuring that the Hall remains the premier international destination for the world's greatest artists in the 21st century and beyond.

The project will create new inspirational spaces dedicated to music education within existing upper floors of the building, and will also fully refurbish Carnegie Hall's backstage areas. A new Education Wing will include ensemble rooms, practice rooms, and teaching studios, as well as a state-of-the-art home for Carnegie Hall's Archives. Adjacent to the Education Wing will be a new outdoor Roof Terrace—a gathering place for visitors to the building. These new facilities, expected to be completed in 2014, will ultimately increase the number of people that Carnegie Hall serves and provide a wonderful setting in which to inspire a lifelong love of music in young musicians, students, educators, and audiences alike.

\$10,000,000 or more

Joan and Sanford I. Weill
Judith and Burton P. Resnick

\$1,000,000 to \$2,500,000

Leni and Peter May

Linda and Earle S. Altman
Clarissa and Edgar Bronfman, Jr.
Mr. and Mrs. Nicola Bulgari
Anna-Maria and Stephen Kellen
Foundation

Mark and Anla Cheng Kingdon
Foundation

Mr. and Mrs. Robert I. Lipp
Mr. and Mrs. Terry J. Lundgren /
Macy's, Inc.

Beth and Joshua Nash
Ronald O. Perelman Family
Foundation

Susan and Elihu Rose Foundation

Mrs. Julio Mario Santo Domingo

Henry and Elizabeth Segerstrom

Siemens Corporation
Mr. and Mrs. A.J.C. Smith
S. Donald Sussman

Judy Francis Zankel

The Zankel Fund

Ann Ziff

\$100,000 to \$999,999

The Diller-von Furstenberg
Family Foundation

Mr. and Mrs. Anthony B. Evnin

The Marc Haas Foundation

Mr. and Mrs. Thomas G. Maheras

Mr. and Mrs. Lester S. Morse Jr.

The Joe Plumeri Foundation

Deloitte LLP

Ernst & Young LLP

The Horace W. Goldsmith
Foundation

Carl Jacobs Foundation

KPMG LLP

PwC

Edward John and Patricia

Rosenwald Foundation

Suki Sandler

Dr. and Mrs. Thomas P. Sculco

Anonymous

Susan and Ed Forst / Forst Family
Foundation

Clive and Penny Gillinson

Frederick J. Iseman

Stella and Robert Jones

Gilbert and Lena Kaplan

The Lizabeth and Frank Newman

Charitable Foundation

Mr. and Mrs. William G. Parrett

Linda Wachner

John W. and Mary S. Zick

Anonymous

**Lead funding provided by
the City of New York, with
additional support from New
York State.**

New York City Department of
Cultural Affairs
New York City Council
Office of the Manhattan Borough
President

New York State Executive Office

New York State Senate

New York State Council on

the Arts

As of June 30, 2012



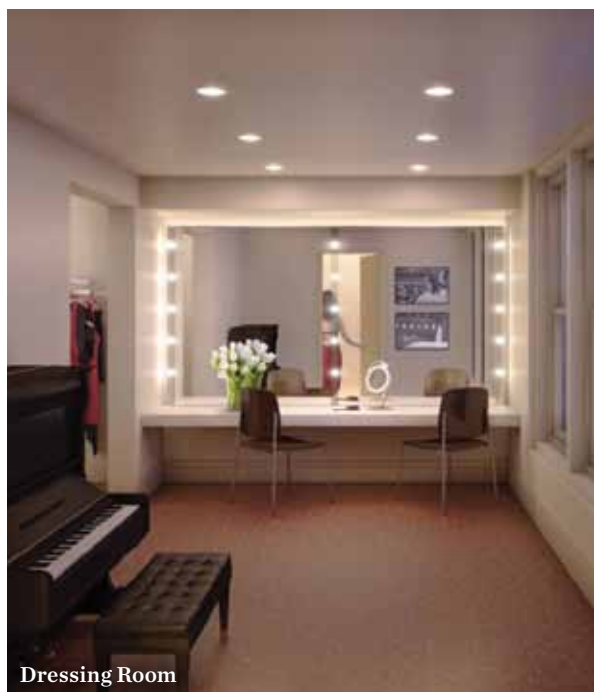
Carnegie Hall



Green Room



Roof Terrace, framed by new Education Wing



Dressing Room



Large Practice Room

Donors

Carnegie Hall was able to fulfill its mission of bringing extraordinary music performed by the world’s greatest artists to the widest possible audience thanks to the generous support of its donors, whose contributions toward artistic and educational programs totaled nearly \$23 million in the 2011–2012 season. We particularly want to thank Bank of America for its seventh consecutive year as season sponsor, and salute Trustee Anne M. Finucane for fostering this partnership. We also express gratitude this season to The Irene Diamond Fund, whose stellar support can be felt in numerous Carnegie Hall initiatives on the concert stage and through the Weill Music Institute.

On the occasion of its 120th anniversary, Carnegie Hall paid tribute to Tchaikovsky, whose celebrated inaugural performance in 1891 was a sensation. The 2011–2012 season opened with a special series of concerts hailing his influence on St. Petersburg performed by the Mariinsky Orchestra and sponsored by PricewaterhouseCoopers. We also appreciate PwC’s sponsorship of the Opening Night Gala, with Dennis M. Nally serving as the Corporate Chairman. Our thanks go to the Gala’s Honorary Chairmen, The Honorable John R. Beyrle, Ambassador of the United States to the Russian Federation, and His Excellency Sergey I. Kislyak, Ambassador of the Russian Federation to the United States. Special thanks also go to Gala Co-Chairs Mercedes and Sid R. Bass, Yoko Nagaе Ceschina, Frederick J. Iseman, Marie-Josée and Henry R. Kravis, Katherine Farley and Jerry I. Speyer, Joan and Sanford I. Weill, and Ann Ziff.

Carnegie Hall honored legendary photographer Bill Cunningham with a special Medal of Excellence Gala for his extraordinary devotion to chronicling fashion for nearly 50 years, as well as inspiring philanthropy and recognizing the important place that arts, culture, and non-profit causes hold in the life of New York City. This star-studded event could not have taken place without the guidance of its leadership, including Honorary Gala Chairs Joan and Sanford I. Weill, Gala Chairs Annette and Oscar de la Renta and Sarah Jessica Parker, and Gala Co-Chairs Mercedes T. Bass, Diane von Furstenberg and Barry Diller, Tina and Terry J. Lundgren, and Elizabeth and Henry T. Segerstrom. The evening also included a festive after-party with DJ Cassidy led by the Junior Committee.

The Hall was definitely alive with *The Sound of Music* at our Musical Theater Gala this spring, which featured a concert performance of this classic with its timeless score by Rodgers and Hammerstein. A special acknowledgment goes to Honorary Chairs: His Excellency Ernst-Peter Brezovszky, Consul General of the Republic of Austria; Anna E. Crouse; Mary Rodgers Guettel; Alice Hammerstein Mathias; and Johannes von Trapp. We also thank Corporate Sponsor Ernst & Young LLP and Corporate Chair Stephen R. Howe Jr., and Gala Co-Chairs Susan and Edward C. Forst, Dinny and Lester S. Morse Jr., and Nelle Nugent and Jolyon Stern.

Julie Skarrett



Honoree Bill Cunningham at the Medal of Excellence Gala | April 23

Annual Fund

Individuals and Foundations

Platinum Circle \$100,000 and more

Estate of Brooke Astor
Mrs. Mercedes T. Bass
Booth Ferris Foundation
Mr. and Mrs. Nicola Bulgari
Yoko Nagae Ceschina
The Irene Diamond Fund
Barry Diller and Diane von Furstenberg
Susan and Edward C. Forst and
Goldman Sachs Gives
Marina Kellen French
Max H. Gluck Foundation
Horace W. Goldsmith Foundation
The Marc Haas Foundation / Helen Hotze
Haas Foundation
Irving Harris Foundation
Mr. Frederick J. Iseman
Anna-Maria and Stephen Kellen Foundation
Mark and Anla Cheng Kingdon Foundation
The Kovner Foundation
Martha and Bob Lipp
The Herman Lissner Foundation
Leslie and Tom Maheras
Mr. and Mrs. Lester S. Morse Jr.
Robertson Foundation
Rockefeller Foundation
The Felix and Elizabeth Rohatyn Foundation
Susan and Elihu Rose Foundation
The Fan Fox and Leslie R. Samuels
Foundation
Mrs. Julio Mario Santo Domingo
Mr. and Mrs. Stanley Shuman
The Alice Tully Foundation
Joan and Sanford I. Weill
Ann Ziff

\$50,000 to \$99,999

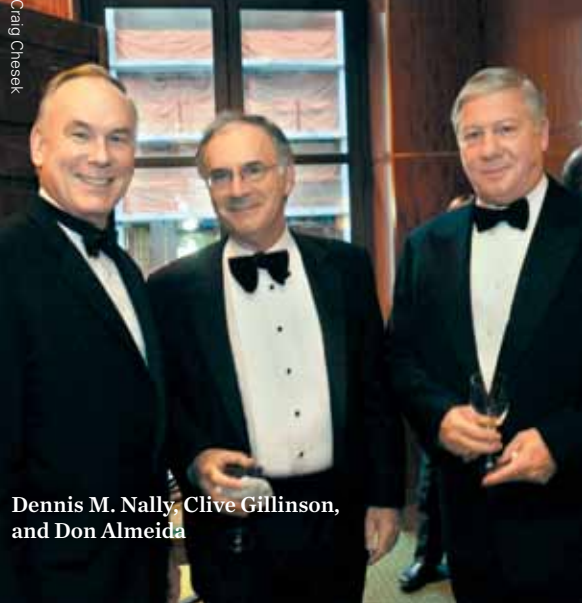
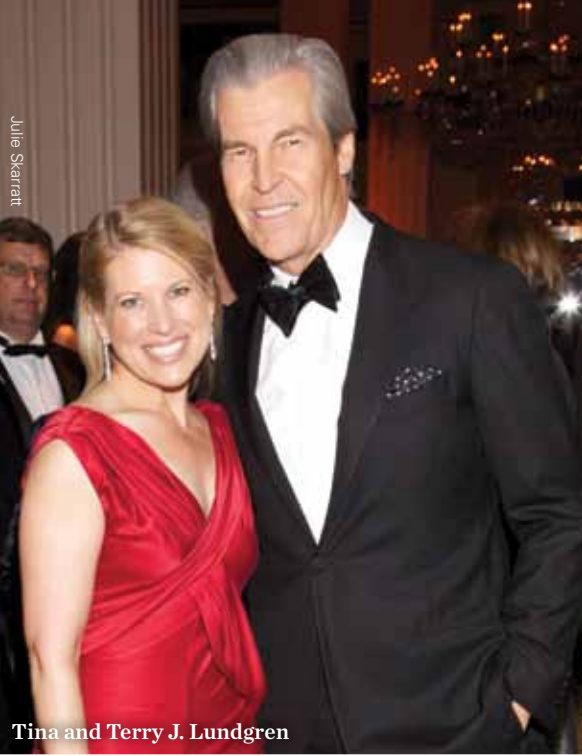
Estate of Mrs. Barbara F. Austin
The Caplin Foundation
The E.H.A. Foundation
The Enoch Foundation
Leona Kern
The Blanche & Irving Laurie Foundation
Mr. and Mrs. Daniel R. Lewis
Audrey Love Charitable Foundation
Mr. and Mrs. Terry J. Lundgren
The Ambrose Monell Foundation
Suki Sandler
The Morris and Alma Schapiro Fund
Dr. and Mrs. Thomas P. Sculco
Elizabeth and Henry Segerstrom
The Shubert Foundation
Mr. and Mrs. A. J. C. Smith
Vital Projects Fund
Mrs. Charles B. Wrightsman

Golden Circle \$25,000 to \$49,999

Mr. and Mrs. Robert Abrams
Linda and Earle S. Altman
The Arthur Foundation
Mr. and Mrs. Frederick C. Benenson
Mr. Ronald E. Blaylock
Bryan Cave LLP
The Ralph M. Cestone Foundation
Mrs. Judith Chasanoff
Aaron Copland Fund for Music
Mr. and Mrs. Richard A. Debs
Jean-Marie and Elizabeth Eveillard
Mr. and Mrs. Anthony B. Evnin
Mr. and Mrs. Donald Fried
Ann and Gordon Getty Foundation
Mr. and Mrs. Klaus Jacobs
Stella and Robert Jones
Gilbert and Lena Kaplan
Mr. and Mrs. Bruce Kovner
The Philip and Janice Levin Foundation
A. L. and Jennie L. Luria Foundation
Leni and Peter May
Henry and Lucy Moses Fund
Linda and Stuart Nelson
Ronald O. Perelman
Mr. and Mrs. Jonathan D. Resnick
Mr. Jay B. Rosenberg
Marge Scheuer and Family
Mr. Peter William Schweitzer
Jeanne and Herbert Siegel
Mr. and Mrs. Larry A. Silverstein
James Thurmond Smithgall
Mr. and Mrs. Howard Solomon
Starr Foundation
Jean Stein
Mr. Robert L. Turner
The Weiler Fund
Judy Francis Zankel
Pia and Jimmy Zankel
Susan and Mark Zankel
Anonymous

Silver Circle \$20,000 to \$24,999

Mr. and Mrs. John P. Birkelund
The Gladys Kriebie Delmas Foundation
Mr. and Mrs. Walter A. Eberstadt
Rosalind and Eugene J. Glaser Foundation
Andrew J. Martin-Weber and
Kevin J. Wertman
The Barbro Osher Pro Suecia Foundation
Judith and Burton P. Resnick
Mary Ellen and Karl von der Heyden
Jeanette S. and Paul A. Wagner
Mary J. Wallach
George and Joyce Wein Foundation
Mr. and Mrs. Lawrence Weinbach



Chairman’s Circle

Our annual Chairman’s Circle event was a highlight of the spring season. Donors and Trustees were treated to cocktails and hors d’oeuvres, followed by a spectacular private recital of cabaret songs by the multifaceted mezzo-soprano Stephanie Blythe with pianist Craig Terry, and culminated with dinner with the artists. Special thanks go to Joan and Sanford I. Weill for hosting the event, as well as to our new partner Cartier for its extraordinary generosity in providing a truly lovely evening from beginning to end.



Chairman’s Circle \$15,000 to \$19,999

Mr. and Mrs. Emanuel Ax
Rose M. Badgeley Residuary
Charitable Trust
The Barker Welfare Foundation
Mr. Norton Belknap
Bialkin Family Foundation
Mr. H. S. Beau Bogan and
Mr. Elliot M. Friedman
Ruth and Louis S. Brause
Mr. and Mrs. Leonard Feinstein
Cynthia and Herbert Fields
Clive and Penny Gillinson
Mr. Robert D. Goldfarb
Jane and Charles Goldman
Mr. and Mrs. Stephen Graham
Hermione Foundation
Richard H. Holzer Memorial
Foundation
Florence and Robert Kaufman
Mrs. Andrea Klepetar-Fallek
Dr. Jamie Koufman
Mr. Arthur L. Loeb
Mrs. Nancy A. Marks
Mrs. Helen Nash
Mr. and Mrs. William G. Parrett
In Memory of Marion Pokoik
Dick

Mr. and Mrs. Charles J. Seidler
Ms. Alice Shure
Robert B. Silvers
Robert Summer and Susan Kasen
Sylvan and Ann Oestreicher
Foundation, Inc.
The Tombros Foundation
Trust for Mutual Understanding
Mr. and Mrs. Rafael Viñoly
Voice Institute of New York
The Isak and Rose Weinman
Foundation
Anonymous (4)

Artist’s Circle \$10,000 to \$14,999

Roger and Camille Abelson
Mr. and Mrs. Alan M. Ades
Mr. and Mrs. Burnside E.
Anderson III
Ginette and Joshua Becker
Mr. Albert Behler
Peggy and Paul Bernstein
Mr. Kim D. Bleimann
The Brodsky Family Foundation
Mr. Charles R. Bronfman and
Ms. Rita Mayo
Deeds Foundation
Mr. and Mrs. Joseph A. DiMenna
Marjorie and Alan F. Doniger
Ella Fitzgerald Charitable
Foundation
David and Tanya Fox
Barbara W. Fox-Bordiga in
memory of Lord Bordiga
Seth Frank in memory of David
Gurland—“Carnegie Hall,
Someday”
The Gilder Foundation
Joan Harris, The Irving Harris
Foundation
Carol and Howard Holtzmann
Carl Jacobs Foundation
Jephson Educational Trusts
Sidney R. Knafel and
Londa Weisman
Lanie & Ethel Foundation
Elaine and Robert LeBuhn
Mr. and Mrs. Joel Leitner
Lese Family Foundation
Leon Levy Foundation
Mr. Yo-Yo Ma and Ms. Jill Hornor
Sylvia and Leonard Marx Jr.
Mr. Robert Menschel
E. Nakamichi Foundation
Beth Goldberg Nash and
Joshua Nash
Ms. Hiroko Onoyama and Mr.
Ken Sugawara

Mr. and Mrs. Harold Prince
Mr. and Mrs. Jonathan P. Rosen
Phyllis and Charles Rosenthal
Mrs. Lily Safra
Mr. Gil Shiva
Abraham and Beverly Sommer
Foundation
Joseph A. Stern
Mr. Kurt G. Strovink
Robert Summer and Susan Kasen
S. Donald Sussman
Mr. and Mrs. Wilmer J.
Thomas Jr.
The Vidda Foundation
Svetlana and Herbert Wachtell
Foundation
Miriam and Ira D. Wallach
Foundation
Mrs. John L. Weinberg
Neil Westreich
Mrs. Ruth Widder
Mr. and Mrs. Charles O. Wood
Dr. Miao-Dan Wu
Ms. Shannon Wu and
Mr. Joseph Kahn
The Oni Zazen Collection
Mr. Uzi Zucker
Anonymous (2)

Carnegie Circle \$5,000 to \$9,999

Ms. Jacqueline Albert Simon
Mrs. Robert Allen
Kathi and Peter Arnow
Babbitt Family Charitable Trust
Barbash Family Fund
Mr. Shepard Barbash and
Ms. Vicki Ragan
Ms. Joan Benny
Mrs. Stephanie Bernheim
Ms. Elaine S. Bernstein
Francine J. Berry
Luciano and Giancarla Berti
Mr. Sam Selim Beyda
Mr. and Mrs. James A. Block

Gary Brewster and Tess Mateo
Mr. Ryan Brown
Mr. and Mrs. Robert L. Burch
Ann and Earl Carlyss
Mr. and Mrs. Arthur L. Carter
Mrs. Betty S. Chaurize
Mrs. Marjorie Chester
Mr. Theodore Chu
Mr. and Mrs. Dominique Clavel
Mr. Yann Coatanlem
Mr. and Mrs. Abraham E. Cohen
Ms. Anne Cohen
Jill and Irwin B. Cohen
Michele and Terry Cone
Mr. Leon Constantiner
Mr. Victor Constantiner
Nancy and Bruce Cooper
Edmond and Yvette Cotty
Mr. George F. Cumbler
D. Ronald Daniel and Lise Scott
Ms. Elizabeth de Cuevas
Mrs. Strachan Donnelley
Dr. Joan Eliasoph
Mr. Stanley Epstein
Mr. Otho Eskin
Mr. and Mrs. Leroy Fadem
Mr. Giovanni Favretti
Mr. David H. Feinberg
Mr. Kenneth Feinberg
Doucet and Stephen Fischer
Mr. and Mrs. Arthur Fleischer
Mr. and Mrs. John French III
Gideon and Sarah Gartner
Mr. and Mrs. John D. Gilliam
Faith Golding Foundation Inc.
Mr. Alexander Goldberg
Mr. David M. Goldman and
Mark A. Schaffer
Mr. and Mrs. John Goodrich
Dr. and Mrs. Victor R. Grann
Mr. and Mrs. Eugene M. Grant
Monika and Peter Greenleaf
Mr. L. Jay Grossman Jr.
Mr. Peter Gruenberger and
Dr. Carin Lamm
Lynne and Harold Handler



Clive Gillinson and Mrs. Julio Mario Santo Domingo



Anna Netrebko, Yo-Yo Ma, and Ann Ziff

Dr. Lynne Harrison
Ms. Adriana Herrera
Dr. Betty S. Iu
Mr. Stuart M. Johnson
Mr. and Mrs. Eric Kaltman
Mr. and Mrs. Robert Karin
Dr. and Mrs. Robert Kavesh
Ms. Yukako Kawata
Ms. Irene King
Ms. Jane W. Kitselman
Cindy Knuth
Mr. and Mrs. Daniel F. Kolb
Dr. Barbara Kravitz
Mr. and Mrs. Mickey Kupperman
Mr. and Mrs. Marvin Kurjan
Ms. Solange Landau
Mr. and Mrs. Leonard A. Lauder
Ms. Sue Lehmann
Kurt F. Leopold
The Irene Levoy Foundation
Ms. Francesca Liechenstein and
Ms. Jane Riskin Bean
Ken Lin Fund
Mr. and Mrs. A. Michael Lipper
Litwin Foundation
William and Diane Lloyd
Mr. Milton Martinez
Mr. Richard Massey
Mr. and Mrs. Joseph McLaughlin
Mr. Ajai Mehta
Fundacion Meijer-Werner
Mr. and Mrs. Samuel R. Meshberg
Miller Khoshkish Foundation
Mrs. Alice Netter
Mrs. K. F. Netter

The Lizabeth and Frank Newman
Charitable Foundation
Mr. Stanley Newman and
Dr. Brian Rosenthal
Mrs. Claude Nicaise
Mr. and Mrs. John A. Nielsen
In memory of Kirk S. Norton
Ms. Paula Sarnoff Oreck
Reverend and Mrs. Everett C.
Parker
William E. Phillips and
Barbara Smith
Ms. Debra L. Pipines
Mr. and Mrs. Leon B. Polsky
Pascale and Ernest Raab
Mr. and Mrs. Ira M. Resnick
Allan and Reda R. Riley
Foundation
Jane and Paul Rittmaster
Mr. David Rockefeller Sr.
Mr. Richard Roth
The Tom Roush Fund of the
Funding Exchange
Bonnie and Mitchell Rudin /
CBRE
Mr. and Mrs. Lawrence Saper
Rosita Sarnoff and Beth Sapery
Dr. and Mrs. Daniel Schapiro
Mr. and Mrs. Gregg L. Schenker
Alfred and Anita Schnog
Mr. and Mrs. Edmund Schroeder
Lynn Schusterman
Mr. and Mrs. William A.
Schwartz

Jordan B. Seaman and The
Grateful Foundation
Mr. Paul J. Sekhri
Mr. Martin Selig
Mrs. Florence L. Seligman
Ms. Tracy Seretean
Mr. and Mrs. Hardwick Simmons
Mr. and Mrs. F. Randall Smith
Dr. and Mrs. Peter M. Som
Mrs. Annaliese Soros
Jane Ginsburg and
George T. Spera Jr.
Gregory St. John and
Gary McKay
Mrs. Kathryn Steinberg
Sydney and Jonathan Stern
Mrs. Vera Stern
Mr. James B. Stewart Jr. and
Mr. Benjamin Weil
Mr. and Mrs. Neal R. Stoll
Mr. and Mrs. Edward Streim
Lee and Roger Strong
Ms. Shining Sung
Mr. Jay H. Tanenbaum
Wagner Thielens
Mr. and Mrs. Jesse I. Treu
Dr. and Mrs. Constantine T.
Tsitsera
Mr. Gordon VeneKlasen
Marian M. Warden Fund of
The Greater Harrisburg
Foundation
Charles and Jacqueline Warren
Jieun and David Wax
Drs. Andrew and Nancy Weiland

Mr. Peter Wexler
Ms. Henrietta C. Whitcomb and
Mr. David K. Whitcomb
Ms. Dian Woodner
Jay N. and Susan Woodworth
Chris and Lonna Yegen
Peter Young and Merit E. Janow
Ms. Susan Zeckendorf
Mr. and Mrs. John W. Zick
Ms. Audrey Y. Zucker
Anonymous (5)

Carnegie Club
\$2,500 to \$4,999
Mr. Adil Abdulali
Mr. Ernest Abrahamson
Mr. and Mrs. William H. Abrams
Mr. and Mrs. Lawrence D.
Ackman
Margot Adams
Deborah and Charles Adelman
Joseph and Jacqueline Aguanno
Mr. and Mrs. Mario Albek
Arlene and Alan Alda
Bruce Alleborn
Dr. Jennifer Altman and
Mr. Jason Fein
Jose Llamas
Mr. and Mrs. Stanley J. Arkin
Ms. Rita Arlen
Ms. Sara K. Arlin and Ms.
Jennifer L. Mowad
Jenna Arme and Sean Koffel
The Louis Armstrong
Educational Foundation

Ms. Norma J. Arnold
Ronald D. Arron and
Roberta Weiner
Ms. Martina Arroyo
Ms. Adrienne Arsht
Mrs. George Asch
David and Eugenia Askren
Mr. Steven T. Atkins
Consul Philippe Auguin
Mr. and Mrs. Paul Avrich
Edwin Bacher and Johanna
Weber
Joseph T. Baio
Mrs. Doris C. Kempner and
Mr. Frederic R. Ballen
Mr. Sid R. Bass
Mr. Sanford L. Batkin
Mr. Andreas Baum
Mr. and Mrs. Michael Beaury
Ms. Lisa G. Beckerman
Mr. Joseph Bell and
Mr. Peter Longo
Mr. and Mrs. Selim Benardete
Mrs. Susan Bender
Ms. Denise Benmosche
Esme and Roger Berg
Mr. Martin Berkowitz
Daniel L. and Ann L. Bernstein
Barbara and Joel Edward Bickell
Dr. Jan E. Lewis and
Mr. Barry Bienstock
Mary Billard and Barry Cooper
Ms. Cynthia E. Bing
Mrs. Tina-Maria Birch
Adrienne and Robert Birnbaum
Ms. Jolana Blau
Jane S. Block
Harvi and Bob Bloom
Ms. Dian Woodner
Ms. Rachel Bluth and
Mr. Derek Smith
Jane K. and Allen L. Boorstein
Ms. Janet Malcolm Botsford
Mr. David Bottoms
Ruth Bowman and
George Bookman

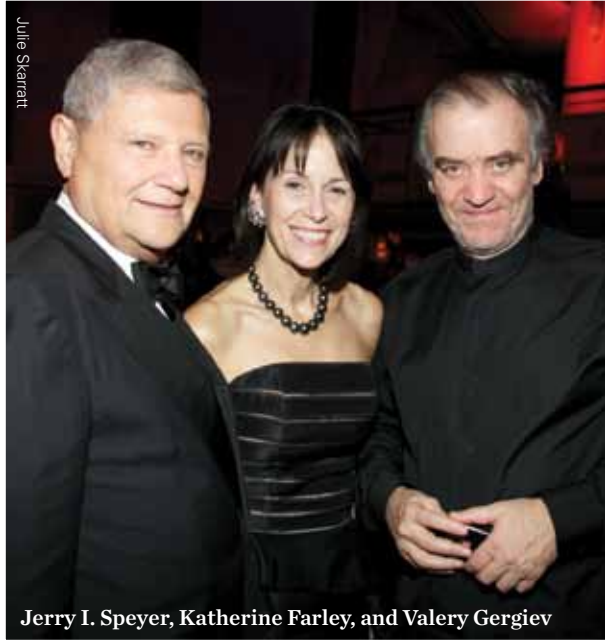
Mr. Stuart D. Boynton
Mr. Clifford Brand and
Ms. Robin Lynn Alexander
Cheryl and David Brause
Mr. and Mrs. Ludwig Bravmann
Mr. John Brewer
Dr. Rosemarie D. Bria-Levine
Mr. Errol Brick
Dr. and Mrs. George Brief
Mr. and Mrs. Klaus P.
Brinkmann
Elizabeth A. R. and
Ralph S. Brown Jr.
Mrs. Susanne Brundige
Ms. Lorraine Buch
Mr. and Mrs. Leslie Buckland
Ms. Fran Bull
Mr. and Mrs. George R. Bunn Jr.
Mr. and Mrs. Daniel A. Burack
Herbert and Ann Burger
Mr. Sergey G. Butkevich
Mr. and Mrs. Gilbert Butler
Mr. Robert Cane and
Ms. Alison Nowak
Sandra and Michael J. Cargill
Century Direct
Ms. Patricia W. Chadwick
Catia Zoullas Chapin
Mr. Pablo Cisilino and
Ms. Silvina Leone
Ms. Georgette Ciukurescu
Mr. Steve Coffey and
Mr. George Stirling
Mr. Daniel Cohen
Phoebe and Dr. Bernard Cohen
Mr. and Mrs. Lewis G. Cole
Mr. John P. Coll Jr.
Richard Collens MD
Elizabeth Compton and
Eric P. Grubman
Mr. Ronald E. Compton and
Mrs. Nancy S. Compton
Mr. and Mrs. Costa Constantine
Mr. and Mrs. Kevin Conway
The Cowles Charitable Trust

Mr. Frank J. Cracolici
Mr. and Mrs. John R. Craig
Mr. William Craig III
Dr. Michael Cucka
Peter D. and Julie Fisher
Cummings Family Foundation
Mr. and Mrs. William Curry
Curtains Up!
Barbara and Richard B.
Dannenberg
Ms. Kathy L. Dean
Steve and Connie Delehanty
Ms. Jamie deRoy
Jennie L. and Richard K.
DeScherer
Mr. and Mrs. Jerome Deutsch
Ms. Rosalind Devon
Florence and Burt Diamond
Mr. and Mrs. Harold J. Diamond
Hester Diamond
Dr. and Mrs. Stanley Dicker
Mrs. Ruth Dickler
Ms. Constance Difede
Joan and Stanley Diller
Howard Dillion and
Nell Dillion-Ermers
Ms. Carol E. Domina
Ms. Linda L. D’Onofrio
Barbara and Thomas Dooley
Amit and Kalpana Doshi
Mr. John R. Doss
Jean and Gordon Douglas
John A. Dryzga
Stephen and Judy Dunn
Ms. Susan Dunne
Jay Dweck
Shoshana Dweck
Mrs. Charles H. Dyson
William James Earle
Mr. and Mrs. John Eastman
Ms. Launa Eddy
Dr. and Mrs. Colin S. Edwards
Mr. Jay K. Egelberg
Mr. Richard R. Eger and
Ms. Anne E. Aronovitch

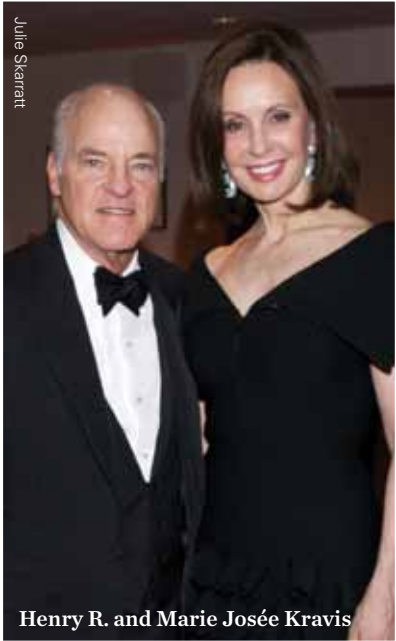
Mr. and Mrs. Alvin H. Einbender
Mr. and Mrs. George Elvin
Mrs. Thomas Enders
Mr. and Mrs. Alan S. Englander
Mr. and Mrs. Alexander T.
Ercklentz
Ms. Gail Erickson
Peter and Joan Faber
Ms. Mary Lou Falcone and
Mr. Nick Zann
Fiona Morgan Fein
Norman Feit
Mr. Arthur F. Ferguson
Francisco J. and
Clara B. Fernandez
Dr. and Mrs. Bernard Ferrari
Gilbert and Anita Fields
Mr. and Mrs. Stephen W. Fillo
Mrs. Roberta Fine
Susie and Charles Finkel
Ms. Barbara G. Fleischman
Ona and Richard Fleming
Mr. and Mrs. Donald Fox
Andrew J. Frackman and
Emily Braun
Mr. Andrew C. Freedman
Mr. and Mrs. Marvin Freeman
Ms. Mary Ann Frenzel
Mr. and Mrs. Edward A. Friedman
Gerald L. and Sheree A. Friedman
Mr. and Mrs. Jeffrey Friedman
William Friedman Diamonds,
Ltd.
Patrick Gallagher and
Robert Watson
Sally and James Gambrill
Arlyn and Edward L. Gardner
Alexis Gelber and
Mark Whitaker
Reverend Carlson Gerdau
Dr. Claude Ghez
Mr. Gregory F. Gilmartin
Jerry Gladstein
Edythe and Mike Gladstein
Drs. Jack and Joy Glaser



Bruce S. and Suzie Kovner



Jerry I. Speyer, Katherine Farley, and Valery Gergiev



Henry R. and Marie Josée Kravis



Louis Brause, Michael and Seren Shvo, Larry A. Silverstein, Gregg L. Schenker, Clive Gillinson, and Earle S. Altman



The Sound of Music leadership, sponsor, and cast

Ciril and Suzanne Godec
Rabbi Barat Elluman and Jay Golan
Virginia and Martin Gold
Ms. Roanne Goldfein
Susan L. Goldfine MD
Ms. Miriam Goldman
Patricia and Bernard Goldstein
I. Michael Goodman and Judith Uman
The Honorable Roy M. Goodman
Maggi and David Gordon
Mr. Brian Gorman
Dr. Harold Gotthelf
Mr. and Mrs. Harry E. Gould Jr.
Rivka Greenberg
Mr. Jonathan K. Greenburg and Ms. Elizabeth Ely
Mrs. Jean Greenfield
Mr. and Mrs. James L. Greenwald
Mr. and Mrs. Mark Gregorio
Mr. Keith Griffin
Mr. and Mrs. Mark Grinis
Ms. Jane Gross
Mrs. Carol Grossman
Mr. and Mrs. Leonard Gruenberg
Mrs. Marit G. Gruson
Ms. Gunilla N. Haac
Ms. Nohra Haime
Carol Hall and Leonard Majzlin in honor of Josephine Renzulli
Anne and John Hall
Mimi Halpern
Ms. Janice M. Hamilton
Dr. Bjorn and Catherine Hanson
Susan T. Harris
Dr. Gail Hashimoto
Barbara Haws and William Josephson
Mr. Frank Heller and Mr. Christian F. Steiner
Edward I. Herbst
Dr. Gemzel A. Hernandez Martinez MD
Marifé Hernandez and Joel Bell
Terry Stamler Herst in memory of Sylvia Fisch Stamler Ginsberg
Mr. and Mrs. Don Hewitt
Joan and William Hickey

Adria and Donald Hillman
Ann Hinkley and Phil Bannes
Ms. Susan B. Hirschhorn and Mr. Arthur M. Klebanoff
Ms. Susan E. Hochberg
Drs. Ira R. and Ruth W. Hoffman
Judith M. and Richard S. Hoffman
Pamela J. Hoiles
Elizabeth Holland and Ronald Vogel
Ms. Joan Holmes
Steven and Lesli Hornstock
Mr. and Mrs. Frederic K. Howard
Mr. Jerry Howett
Mr. and Mrs. William R. Huff
Mr. Timothy Hughes
Mary I. and John E. Hull
Michael Jozef Israels and Maija-Sarmite Jansons
Carol T. Ivanick
Mr. Andrew Jackson and Mr. Dale Michael Lovelock
John Mary Bernard Jacobs Foundation
Marti and Ray Jacobs
The Nathan P. Jacobs Foundation
Ms. Susan G. Jacoby
Mr. and Mrs. Morton L. Janklow
Mr. and Mrs. Floyd H. Jayson
Andreas and Nele Jessel
Mr. Robert D. Jezowski
Ms. Frances Johnson
Mr. and Mrs. Donald Jonas
Mr. Darrell Jones
JTS Fund at the New York Community Trust
Robert Jurgrau
Elliott Kaback and Patricia Woodard
Ms. Connie Kaiserman Robinson and Mr. Steven Robinson
Diana J. Kalman
Leonard and Alice Kandell
Janice Kang
Dr. Sylvia Karasu
Karma Foundation
Ms. Sharon Karmazin
Joseph and Audrey Kartiganer
Elliot and Adrienne Katz

Mr. Neil C. Katz
Mr. Stephen C. Kaye
Mr. and Mrs. Earle W. Kazis
Mr. Thomas F. Kearns Jr.
Mr. William S. Keating
Mary and Howard Kelberg
Ms. Gail Kendall
Ms. Edythe Kenner
Ms. Amy Khoudari and Ms. Frances Greenstein
Mr. John H. Kilbourne
Ms. Mary E. Kirk
Dr. Mark M. Klebanov
Lisa Klein and Timothy Kinsella
Mr. James Klosty
Mr. Robert Knakal
Mr. and Mrs. Winthrop Knowlton
Dr. June H. Koizumi
Judith and Jonathan Kolker
Mr. and Mrs. Charles Kolozsvary
Mr. Tyler Korff
Helen and Jules Kornblau / The Kornblau Family Foundation
Yelena Kourtei and Alex Zakashanskiy
Mr. Jonathan Kowolik
Daniel and Joan Kram
Mr. Alan M. Krause
Dr. and Mrs. Paul Krawitz
Caroline and Mark Krentzman
Ms. Alexandra Krofta-Jones
Dorothy Kryger
Herbert and Dorothy Kunstadt
Sheldon and Rita Kwiat
Ms. Elissa LaBagnara
Mr. and Mrs. Joseph Lagana
Mr. and Mrs. James Lally
Sheila and Bill Lambert
Mr. and Mrs. Fernand Lamesch
Mr. and Mrs. W. Loeber Landau
Mr. Steven E. Lane
Mr. Jonathan Larsen
Henna Ong and Peter D. Lawrence
Ms. Melissa Leapman
Dr. Ben H. Lee
Dorothy Lee and Victor Han
Mr. and Mrs. Robert E. Lee III
William Lee
Harris I. Lehrer

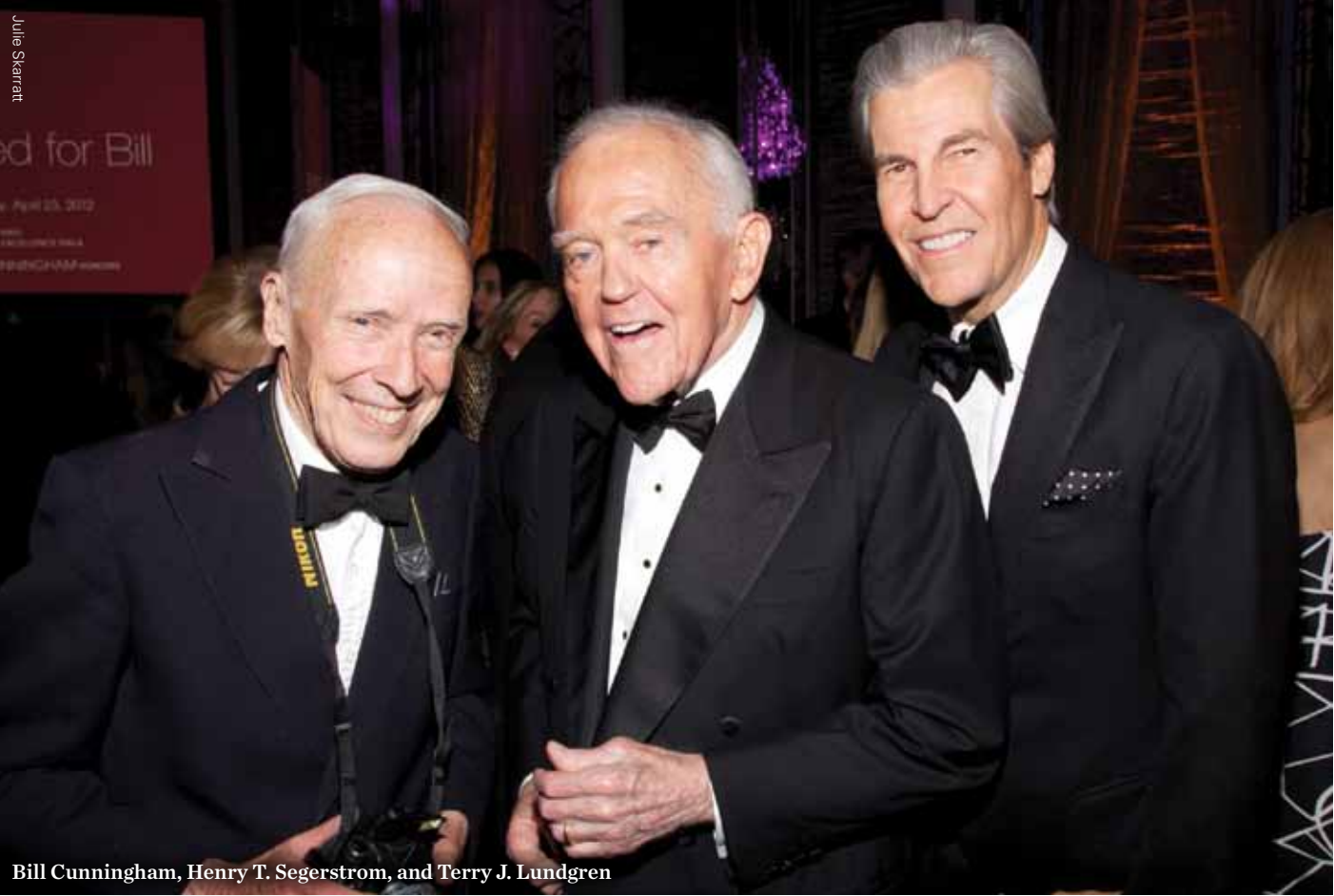
Ms. Carol Leibenson
Mr. and Mrs. Jacques E. Lennon
In memoriam of Samene W. Lesser
Mr. Lionel Leventhal
Mr. Kenneth D. Levien and Ms. Debra Torres
Mr. and Mrs. Jerry Levin
Noel Levine
Leslie and Jim Levy
Marcia and William Levy
Margaret and Oscar Lewisohn
Beth Lieberman MD and Carl Lieberman MD
Mr. and Mrs. Samuel H. Lindenbaum
jpl
Margot and Robert Linton
Arthur D. Little and Jann E. Leeming
Mr. Jose Llamas
Mr. Anthony Lombardo
Mrs. Joan C. Long
Mr. and Mrs. Sherif Lotfi
Ilene and Edward Lowenthal
Joyce Feinberg Luchtenberg
Lundsten-O'Donnell Advisory Group
Dr. Laura Lustig
Mr. and Mrs. Merritt M. Lutz
Mrs. Maria N. Lyras
Mr. Archie Mac Gregor
Angus and Monaise MacDonald
Ms. Loraine Machiz
Mr. David Maguire
Richard H. M. and Gail Lowe
Maidman
Mrs. Susan Malloy
Ms. Virginia Mancini
Judith and Michael Margulies
Alexander R. and Hedvig Margulis
Baroness Mariuccia Zerilli-Marimo
Ms. Monica Markowicz
Edwina and Marvin Marks
Mr. Michael V.P. Marks
Mr. and Mrs. David E. Marrus
Ms. Donna E. Marshall
Mr. and Mrs. Shigeki Masui

Mr. Kingsley Matthew
Marc and Meera Mayer
Mr. Joseph F. McCrindle
Rosemarie and Robert E. McGrath
Mr. Danny McHatton and Ms. Heather Strekal
Ms. Christina McInerney
Kathleen A. McKenna
Mr. and Mrs. Martin McKerrow
Mr. Ryan D. McNaughton
Dr. Gail and Dr. Allen Meisel
Ms. Joyce Menschel
Dr. Ricardo Mesa-Tejada and Dr. Amy Mesa-Jonassen
Mr. Edward J. Miller and Ms. Carolyn Cohen
Ms. Ellen Miller
Mr. and Mrs. Everett B. Miller III
Irwin and Frances Miller
Mr. and Mrs. Jonathan Miller
Mr. and Mrs. Robert E. Mims
Mr. and Mrs. Gerald Mintz
Sandra and Lowell Mintz
Mr. and Mrs. Steven Miron
Mr. Eben Moglen
Karl Moller
Teresa and Martin Monas, in honor of Barbara Cook
Mr. and Mrs. Daniel Montilla
Ms. Barbara Moore
Dr. Diana Moore
Judy and Tom Moore

Amarath Foundation
Cathy Carr and William Moran Jr.
Paula and Gerard Munera Foundation
Mr. Stefano Natella
Mr. and Mrs. George A. Needham
Margaret and Richard Neimeth
Mr. and Mrs. Mitchell J. Nelson
Mrs. Raphael Nenner
Ms. Susanna Neumann
In memory of Gabor Neumann
William and Julianna Obeid
Mr. John E. Oden
Ms. Dianne O'Donnell
Mr. and Mrs. Harold H. Oertell
Mr. and Mrs. Kobi Offer
Daniel and Rebecca Okrent
Mr. Morris A. Orden
Mr. David Orr and Mr. Brant Wong
Dr. Anthony Paciello and Dr. Dianne Rose
Mr. and Mrs. Alex B. Pagel
Mrs. Hannah C. Pakula
Michael and Gabrielle Palitz
Mrs. Frank Papp
Dr. and Mrs. Simon Parisier
Mr. and Mrs. David Parker
Lori and Lee Parks

Parnassus Foundation / Jane and Raphael Bernstein
Mr. and Mrs. Adolfo Patron
The Patterson Family
Rita and Daniel Paul
David B. Pearce M.D.
Mrs. Stephen M. Peck
Arnold S. Penner Esq. and Madaleine Berley
Barbara and Louis Perlmutter
Jerilyn and Brian Perman
Ms. Antonia P. Pew
Mr. Mark Pick
Evan Picoult
Penny and Claudio Pincus
Burton Yale Pines and Helene Brenner
John A. Pirovano
Mr. and Mrs. James Pohlman
Ms. Tara E. Polen
Ms. M. Terri Poli and Mr. J. Craig Weakley
Mindy Pollack
Mr. and Mrs. Sidney J. Pollack
Mr. Myles Pollin
Mr. Robert Poulos
Dr. Robert Press
Mrs. Jessie Hunter Price
Mr. Josh Prottas
Mark Ptashne and Lucy Gordon
Stephen S. Rabinowitz Esq.
Jack Radgowski
Mr. Kirk August Radke

William Raff / Mizuho USA Foundation
Charles J. Raubicheck and Ann S. Macdonald
Isabella del Frate Rayburn
Mr. Gregory R. Reed
Dana and Richard Reimer
Ms. Catherine A. Rein
Ms. Denice Helman Rein
The Karl F. Reuling Fund
Mrs. Sibylle Reyniak
Nataly and Toby Ritter
Pilar and Stephen Robert
Kirk and Judith Robinson
Sondra Kurtin Robinson
Mr. and Mrs. Gerald T. Rolfe
Mr. and Mrs. Kenneth Roman
Paulette and Joseph M. Rose
Mr. and Mrs. Joseph Rosen
Mrs. Liz Rosen
Susan Pinsky and Marc Rosen
Mr. and Mrs. Philip Rosen
Mr. and Mrs. Joseph B. Rosenblatt
Dr. Rosemary Purrazzella and Dr. Marc Rosenblum
Mr. James H. Rosenfield
James R. and Frederica Rosenfield Foundation
Robert Rosenkranz and Alexandra Munroe
Judith and Michael Rosenthal
Barbara and Alan Rosenzweig



Bill Cunningham, Henry T. Segerstrom, and Terry J. Lundgren



Mitsuko and David Rosinus
Mr. Darius Ross
Clara and Irwin Roth
Michael and Juliet Rubenstein
Jacqueline and George Rubin
Mark and Tracy Rudd
Mr. Eric C. Rudin
Mr. and Mrs. William M. Rudolf
Jon Rupp
Mr. and Mrs. William J. Sales
Dr. and Mrs. Eduardo A. Salvati
Alan Salz and Brad Whitehurst
Mr. and Mrs. Suresh Sani
Mr. Ray Santelises
Anna Maria Sarmento
Jack and Marianne Sauter
Mr. and Mrs. James Schadt
Mr. Antoine Schetritt
Mr. and Mrs. Gerhard Schulmeyer
Mr. Béla Schwartz and
Ms. June Zimmerman
Ms. Barbara A. Scott and Ms.
Shirley E. Scott
Mr. and Mrs. William C. Scott
NoraLee and Jon Sedmak
Mr. and Mrs. Herbert L. Seegal
Janet Z. Segal and Family
Mrs. Richard Selle
Barbara and Kenneth Seplow
Nathan and Vivian Serota
Dr. Wales Shao
Selma Shapiro and
James H. Silberman
Mr. Stephen J. Shapiro and
Dr. Amy Attas

Irene and Fred Shen
Marion and William Shulevitz
Mr. and Mrs. Marvin Shulsky
Mr. David M. Siegel and Ms. Dana
Matsushita
Dr. Ellen Silverstein
Mark E. and Roberta K. Simon
Mr. and Mrs. James B. Sitrick
Ms. Samantha Smith
Katherine and Kenneth Snelson
Mr. and Mrs. Gilbert L. Snyder
Ms. Denise R. Sobel
Mr. Dimitri Sogoloff
Dr. Helen Sogoloff
Dr. Merwin Geffen and
Dr. Norman Soloman
Mr. Jason Soloway
Mr. and Mrs. Paul Soros
Dr. Thomas A. Sos and
Dr. Shelley Wertheim
Mrs. Colleen Spencer
Mr. and Mrs. Joseph M. Stafford
Dr. Axel Stawski
Sissy and Gary Stein
Linda B. Stern
Leonore and Walter Stern
Mr. and Mrs. Trevor Stewart
Mr. and Mrs. Dennis Swanson
Mr. and Mrs. I. David Swawite
Gloria and Philip Talkow
Mr. and Mrs. David J.
Tananbaum
Mr. and Mrs. Laurence Tarica
Mr. and Mrs. Henry Taub
Mr. and Mrs. Willard B. Taylor

Priscilla and Jerome Teich
Mr. and Mrs. Barron Tenny
Elise C. and Marvin B. Tepper
Mr. and Mrs. Robert J. Thomson
Mr. and Mrs. Petr A. Thorson
Robert and Jane Toll
Mr. Michael Tomasko IV
Mr. Michael Tubbs
Gerald F. Tucci
Ms. Helen Sonnenberg Tucker
Mr. and Mrs. John Tully
Gil Turchin and Indigo
Lindsey Turner
Ms. Caroline Urvater
Mr. and Mrs. Jean-Paul Valles
Mr. and Mrs. William J. vanden
Heuvel
Ms. Nancy F. Vardakis
Mr. and Mrs. Raymond W.
Vickers
The Rudolph and Lentilhon G.
von Fluegge Foundation, Inc.
Ms. Ruth M. Wagner
Susan Walker and Harry Salwen
Ms. Nora Ann Wallace and
Mr. Jack Nusbaum
Terilynn and Jeff Walsh
Mrs. Cecille Wasserman
Evelene Wechsler
Rebecca and William Weeks
Sandra and George Weiksner
Marie-Hélène Weill
James L. Weinberg
Mr. and Mrs. Michael F. Weinberg
Miss Regine Weiner

Mr. and Mrs. Martin S. Weinstein
Mr. and Mrs. Stephen H.
Weinstein
Mr. and Mrs. Peter Weiss
Linda Weiss
Elizabeth and Joel S. Weissman
Joan Weltz and Arthur Field
Mr. and Mrs. Robert R. Wiener
Mr. and Mrs. Mitchell Williams
Mr. Richard M. Winn III
Ms. Judy Witt
Mr. and Mrs. Irving M. Wolbrom
Jacqueline and Cary Wolf
Mary C. Wolf
Mr. and Mrs. William T. Wolf
The Honorable and Mrs. Carl S.
Wolfson
Mr. James M. Wolin
Corey Worcester and
Yasmine Legendre
Mr. and Mrs. Jonathan Miller
Mrs. Ruth Wright
Mr. and Dr. Leonard H. Yablon
Mr. George M. Yeager
Ms. Shirley Young
Alice F. Yurke and
Robert H. Davis Jr.
Ada Zambetti
Ms. Gloria Zeche
Merryl and Charles Zegar
Baroness Marruccia
Zerilli-Marimo
Anonymous (21)

Corporations

\$100,000 and above

Bank of America
China Merchants Bank
Deloitte LLP
Ernst & Young LLP
KPMG LLP
The McGraw-Hill Companies
PwC
Sony Corporation of America
Target
United

\$50,000 to \$99,999

Chubb Group of Insurance Companies
DeWitt Stern Group, Inc.
Duff & Phelps
MetLife Foundation

\$30,000 to \$49,999

Aon Risk Services
Cartier
Mitsubishi Corporation (Americas)
Toyota
The Walt Disney Company
Wells Fargo

\$20,000 to \$29,999

Ameriprise Financial
Breguet
The Estée Lauder Companies Inc.
Macy's
Pfizer Inc.



Emmanuel Perrin, Joan Weill, Guillaume Alix, and Sanford I. Weill

Bank of America

Carnegie Hall salutes Bank of America, proud season sponsor of the 2011–2012 season.

\$12,000 to \$19,999

BBDO Worldwide
Credit Suisse
Kawasaki Good Times Foundation
UBS

\$6,000 to \$11,999

Arnhold and S. Bleichroeder Holdings, Inc.
Deutsche Grammophon & Decca Classics, U.S.
ITOCHU International Inc.
J.C.C. Fund of the Japanese Chamber of Commerce and Industry of New York, Inc.
Johnson & Johnson
Morgan Stanley
Sumitomo Corporation of America
Toshiba Corporation
Xerox Corporation

\$2,500 to \$5,999

Colgate–Palmolive Company
Mercer Health & Benefits
Mitsubishi Heavy Industries America, Inc.
Sojitz Corporation of America
Yamaha Corporation of America

\$2,499 and below

Nippon Steel U.S.A., Inc.
Opera New Jersey
Richloom Fabrics Group, Inc.
SD&A Teleservices, Inc.

Public Support

New York City Department of Cultural Affairs
New York City Council
New York City Department for the Aging
New York City Department of Design and Construction
New York City Department of Education
Office of the Manhattan Borough President

New York State Council on the Arts

National Endowment for the Arts
National Endowment for the Humanities
United States Department of Education
United States Department of State, Bureau of Education and Cultural Affairs



Suzy and Elihu Rose



Dinny and Lester S. Morse Jr., and Nancy Marks

Special Events

Wednesday, October 5, 2011
Carnegie Hall's Opening Night Gala
Mariinsky Orchestra
Valery Gergiev, Music Director and Conductor
Yo-Yo Ma, Cello

Honorary Chairmen
The Honorable John R. Beyrle,
Ambassador of the United States to
the Russian Federation
His Excellency Sergey I. Kislyak,
Ambassador of the Russian Federation
to the United States

Gala Co-Chairmen
Mercedes and Sid R. Bass
Yoko Nagae Ceschina
Frederick J. Iseman
Marie-Josée and Henry R. Kravis
Katherine Farley and Jerry I. Speyer,
Tishman Speyer
Joan and Sanford I. Weill
Ann Ziff

Corporate Chairman
Dennis M. Nally,
Chairman, PricewaterhouseCoopers
International Ltd.

Opening Night Gala Sponsor
PwC

Gala Journal Sponsor
Macy's and Bloomingdale's

Special thanks to *Town & Country* magazine

Monday, April 23, 2011
**Medal of Excellence Gala
Honoring Bill Cunningham**

Honorary Gala Chairs
Joan and Sanford I. Weill

Gala Chairs
Annette and Oscar de la Renta
Sarah Jessica Parker

Gala Co-Chairs
Mercedes T. Bass
Diane von Furstenberg and Barry Diller
Tina and Terry J. Lundgren
Elizabeth and Henry T. Segerstrom

Gala Lead Sponsor
The New York Times

Musical Performance
Vittorio Grigolo, Tenor
Gerald Steichen, Piano

Tuesday, April 24, 2012
The Sound of Music
Music by Richard Rodgers
Lyrics by Oscar Hammerstein II
Book by Howard Lindsay and Russel
Crouse
Suggested by "The Trapp Family Singers"
by Maria Augusta Trapp
Orchestrations by Robert Russell Bennett
Choral, Dance, and Incidental Music
Arranged by Trude Rittmann
Concert Adaptation by David Ives

Produced by Carnegie Hall in association
with Rodgers & Hammerstein: An
Imagem Company.

Honorary Chairs
His Excellency Ernst-Peter Brezovszky,
Consul General of the Republic of Austria
Anna E. Crouse
Mary Rodgers Guettel
Alice Hammerstein Mathias
Johannes von Trapp

Corporate Chair
Stephen R. Howe Jr.,
Americas Managing Partner,
Ernst & Young

Corporate Sponsor
Ernst & Young

Co-Chairs
Susan and Ed Forst
Dinny and Lester Morse Jr.
Nelle Nugent and Jolyon Stern



Sanford I. and Joan Weill, Ambassadors Sergey I. Kislyak and John R. Beyrle,
Valery Gergiev, Yo-Yo Ma, Frederick J. Iseman, and Yoko Nagae Ceschina



Marilyn Horne and Klaus Jacobs

The Andrew Carnegie Society

The Andrew Carnegie Society honors donors who have made leadership gifts to support the restoration, renovation, and expansion of Carnegie Hall, and to augment the endowment fund in support of artistic programming and music education.

\$10,000,000 or more

City of New York
Ronald O. Perelman Family Foundation
Judith and Burton P. Resnick
State of New York
Joan and Sanford I. Weill
Judy and Arthur Zankel
Estate of Arthur Zankel

\$5,000,000 to \$9,999,999

Mr. and Mrs. Sid R. Bass
Citi Foundation
Mr. and Mrs. Richard A. Debs
The Honorable and Mrs. Felix G. Rohatyn
Susan and Elihu Rose Foundation
Marge and Walter Scheuer and Family
The Starr Foundation
United States Department of Education

\$2,500,000 to \$4,999,999

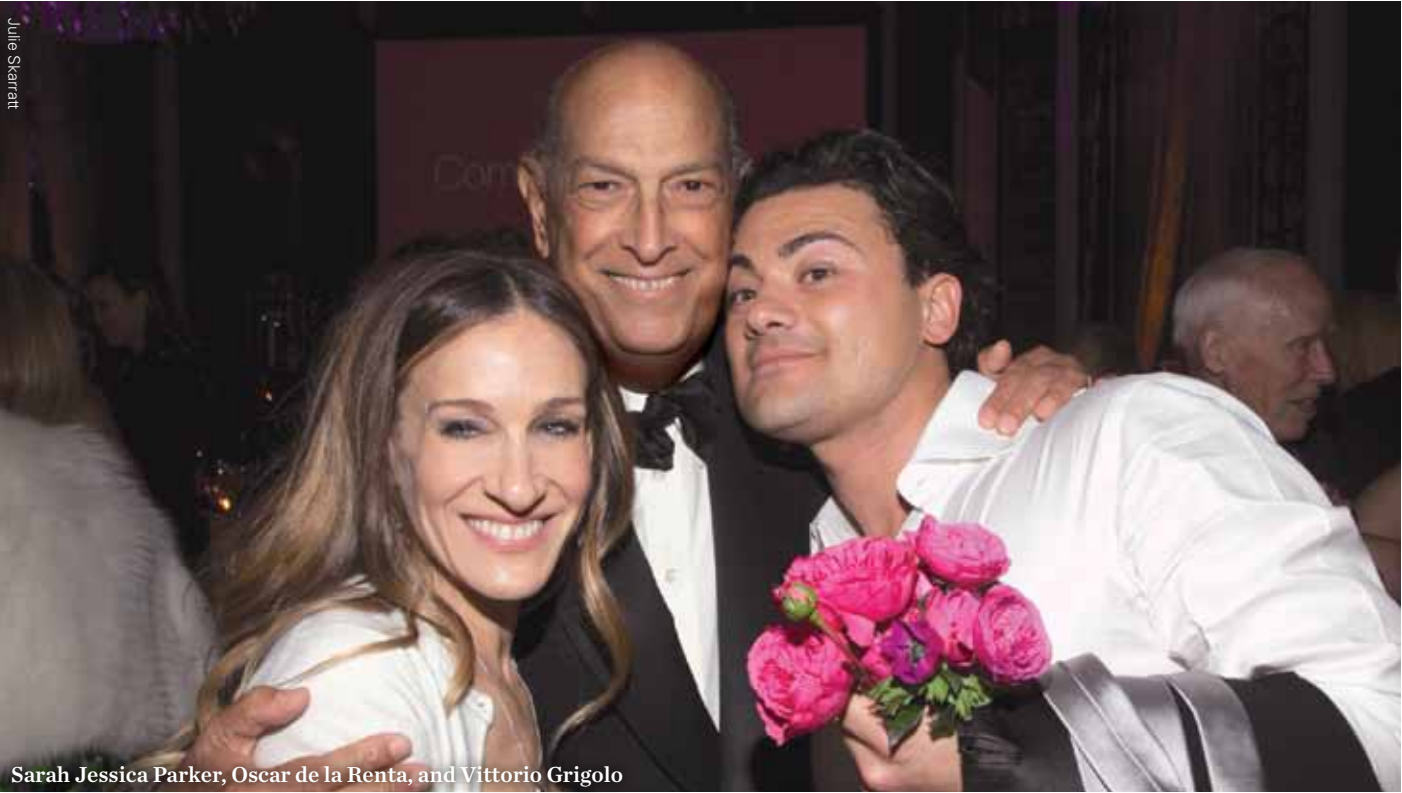
Linda and Earle S. Altman
Deloitte LLP
The Horace W. Goldsmith Foundation
Mr. and Mrs. Klaus Jacobs
Anna-Maria and Stephen Kellen Foundation
Mr. and Mrs. Robert I. Lipp
Leni and Peter W. May
Mr. and Mrs. Lester S. Morse Jr.
Mr. and Mrs. William G. Parrett

William D. Rondina
Mr. S. Donald Sussman
Uris Brothers Foundation, Inc.
Mr. and Mrs. James D. Wolfensohn

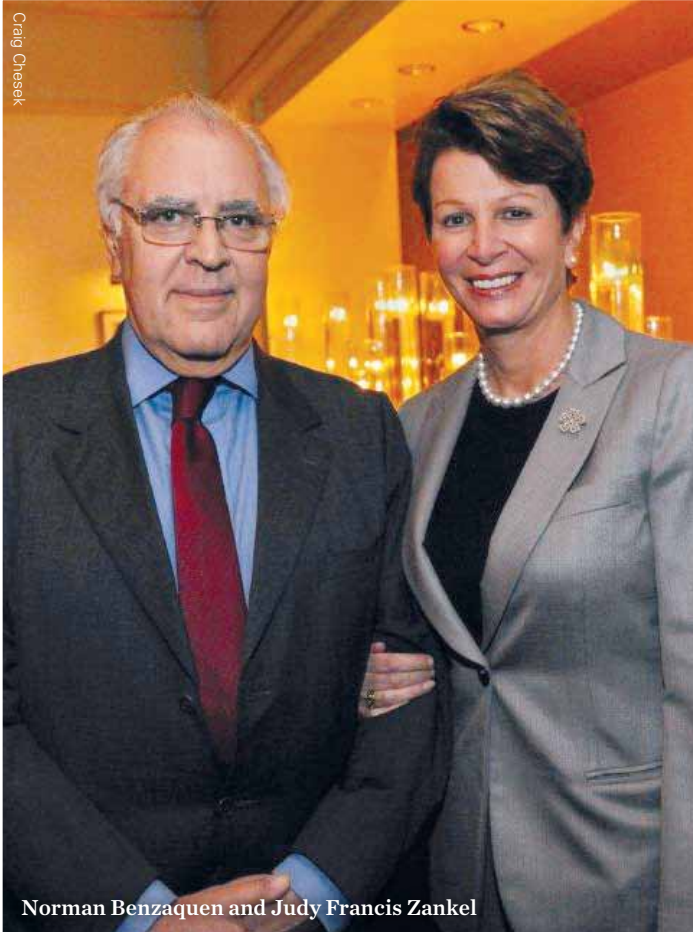
\$1,000,000 to \$2,499,999

The Vincent Astor Foundation
Vincent Astor Trust
AT&T
Mr. and Mrs. Ralph M. Baruch
Mr. and Mrs. Kenneth J. Bialkin / Skadden,
Arps, Slate, Meagher & Flom
Clarissa and Edgar Bronfman, Jr.
Mr. and Mrs. Nicola Bulgari
J.P. Morgan Chase & Co.
Credit Suisse
Estate of Joanne Toor Cummings
Luella and Martin Davis
Deutsche Bank
The Irene Diamond Fund, Inc.
The Diller-von Furstenberg Family
Foundation
Mr. and Mrs. Anthony B. Evnin
Fomento Cultural Banamex Fund for
International Education
Mr. and Mrs. Gordon P. Getty
Jean & Julia Goldwurm Memorial
Foundation
The William Randolph Hearst Foundation
Claudia and Roberto Hernández Ramírez
Maria Olivia and Jim Judelson

Gershon Kekst, Kekst and Company, Inc.
Mark and Anla Cheng Kingdon Foundation
KPMG LLP
Mr. and Mrs. Henry R. Kravis
The Kresge Foundation
Mr. and Mrs. Terry J. Lundgren
Macy's and Bloomingdales
The Marc Haas and Helen Hotze Haas
Foundations
The Marma Foundation Fund for Youth
Education
The Andrew W. Mellon Foundation
The Ambrose Monell Foundation
Beth and Joshua Nash
National Endowment for the Arts
Natural Heritage Trust
The Lizabeth and Frank Newman Charitable
Foundation
Pepsi-Cola Company
John & Louise Reuter Trust
The Rockefeller Foundation
Pat and John Rosenwald
Jack and Susan Rudin in memory of
Lewis Rudin
The Fan Fox and Leslie R. Samuels
Foundation, Inc.
Mrs. Julio Mario Santo Domingo
Henry and Elizabeth Segerstrom
Mr. and Mrs. Arthur T. Shorin
Mr. and Mrs. Stanley S. Shuman



Sarah Jessica Parker, Oscar de la Renta, and Vittorio Grigolo



Norman Benzaquen and Judy Francis Zankel



Frederick J. Iseman and Princess Firyal of Jordan

Henry Shweid and Margaret Munzika Shweid Trust
Siemens Corporation
Mr. and Mrs. A. J. C. Smith
Sony Corporation of America & Sony Music Entertainment Inc.
Jerry I. Speyer and Katherine G. Farley
Mr. and Mrs. Isaac Stern
The Tishman Fund for Education through Technology
The Alice Tully Foundation
U.S. Department of Housing and Urban Development
Verizon Foundation
Alberto Vilar
Linda J. Wachner and Warnaco Inc.
The Weiler Fund
Mrs. Charles B. Wrightsman
Judy Francis Zankel
The Zankel Fund
Zankel Charitable Lead Trust
Ann Ziff
Anonymous

\$500,000 to \$999,999

American Express
Booth Ferris Foundation
CIBC Oppenheimer
Charles E. Culpeper Foundation, Inc.
The Eleanor Naylor Dana Charitable Trust
George David
Estate of Mrs. Eugenia Doll
Ernst & Young LLP

The Sherman Fairchild Foundation, Inc.
FleetBoston Financial
Fribourg Foundation Inc. and Mr. and Mrs. Raphael Recanati
Estate of Rita L. Gluck
The Marilyn Horne Foundation
Mr. and Mrs. Carl C. Icahn
Stella and Robert Jones
Gilbert and Lena Kaplan
The J.M. Kaplan Fund, Inc.
Diane G. Kranz
Lincoln-Mercury
Mr. and Mrs. Thomas G. Maheras
Marsh & McLennan Companies, Inc.
The McGraw-Hill Companies
Lauren and J. Ezra Merkin
Merrill Lynch & Co., Inc.
Metropolitan Life Foundation
Mrs. Milton Petrie
The William Petschek Family
The Pew Memorial Trust
The Pincus Family Fund
The Joe Plumeri Foundation
Laura and John Pomerantz
PwC

Mr. and Mrs. Oscar de la Renta
Rockefeller Brothers Fund
Suki and Herman Sandler
Mr. and Mrs. Peter William Schweitzer
The Peter Jay Sharp Foundation
The Sirus Fund
Miriam Solovieff
Estate of Marie Steiner

Suntory International Corp.
Viacom Inc.
Estate of Elisabeth P. Wendell
Mr. and Mrs. John W. Zick

\$250,000 to \$499,999

Andersen Worldwide
Automatic Data Processing, Inc. (ADP)
The Barker Welfare Foundation
Mr. and Mrs. Norton Belknap
CBS Inc.
Carl Jacobs Foundation
Cleary, Gottlieb, Steen & Hamilton
Mr. and Mrs. Paul J. Collins
The Leonard and Sophie Davis Foundation, Inc.
Mr. and Mrs. Charles H. Dyson
Exxon Corporation
Mr. and Mrs. Zachary Fisher
Mr. and Mrs. Wolfgang K. Flöttl
Genatt Associates, Inc.
The Florence Gould Foundation
The Armand Hammer Foundation
The Heckscher Foundation for Children
IBM Corporation
Geron P. Johnson Foundation, Inc.
Addie and Tom Jones
Helen and Martin Kimmel
John S. and James L. Knight Foundation
In memory of David and Nora Leseine
Bella and Leonard Linden
Sir Deryck and Lady Maughan
Betty Anne and James R. McManus

Henry and Lucy Moses Fund, Inc.
Rupert Murdoch
News America Publishing, Inc.
The New York Times Company Foundation, Inc.
Stavros Niarchos Foundation
Paramount Communications, Inc.
Pfizer Inc.
Philip Morris Companies Inc.
In memory of Martha and Eva Rutenberg
Reliance Group Holdings Inc.
Lloyd E. Rigler and Lawrence E. Deutsch
Billy Rose Foundation, Inc.
Jack and Susan Rudin Educational and Scholarship Fund
May and Samuel Rudin Family Foundation, Inc.
Estate of Darwin F. Schaub
S.H. and Helen R. Scheuer Family Foundation, Inc.
Dr. and Mrs. Thomas P. Sculco
Mr. and Mrs. Constantine Sidamon-Eristoff
Esther Simon Charitable Trust
Robert E. Simon Jr.
In honor of Rudolf G. and Inger-Ma Sonneborn
Estate of Maria M. Stivelman
Estate of Lucien Thomson
Tobishima Associates, Ltd.-The Stanhope Hotel
United States Department of State
United Technologies Corporation / Otis Elevator
Veronis Suhler Stevenson
Vivendi Universal
Craig and Connie Weatherup
John C. Whitehead
Mr. and Mrs. Lawrence A. Wien
Hyman, Mildred, Arthur and Elliot Wiener Family
Willkie Farr & Gallagher
Ivy Wu
Anonymous (1)

\$100,000 to \$249,999

ABD Securities Corporation
The Agvar Fund
Alcoa Foundation
ARCO Foundation
A.S.M. Mechanical Systems/Richard Minieri
Ilse and Hans J. Baer
In memory of Max and Hilde Baer
The Bank of New York
Arthur and Diane Belfer
Estate of Charlotte V. Bergen
The Siegfried and Josephine Bieber Foundation
The Blackstone Group
Mr. and Mrs. James A. Block
Mr. and Mrs. Leonard Block
The Bodman Foundation
Mr. and Mrs. Stanley M. Bogen
The Bristol-Myers Squibb Foundation, Inc.
Browning-Ferris Industries
The Burnett Foundation
Capital Cities/ABC, Inc.
Carnegie Corporation of New York
Mary and Michael Carpenter
Mr. and Mrs. David C. Clapp
The Constantiner Family
The Corbett Foundation
William H. Cosby Jr.
Barbara and Richard B. Dannenberg
Mrs. Evelyn Y. Davis
Evelyn Y. Davis Foundation
Deerpeth Construction Corporation
Jim and Nancy Dine
Dresdner Bank North America
Drexel Burnham Lambert Foundation, Inc.
E.I. du Pont de Nemours and Company
Margot T. Egan
Mr. and Mrs. Alvin H. Einbender
Henry, Kamran and Frederick Elghanayan
The Essex House / Nikko Hotels International
The Fireman Hospitality Group
Ford Foundation

Forest Electric Corp.
Susan and Ed Forst / Forst Family Foundation
Nicholas C. Forstmann
Theodore J. Forstmann
Alan and Helene Fortunoff
Barbara W. Fox-Bordiga, in memory of Lord Bordiga
Thomas R. and Ingrid L. Frohlich Burns and Family
The L.W. Frohlich Charitable Trust
The Fuji Bank Ltd. / Fuji Bank and Trust Co.
Ira and Leonore S. Gershwin Philanthropic Trust
Clive and Penny Gillinson
The Howard Gilman Foundation
Irving S. Gilmore International Keyboard Festival
Edythe and Mathew Gladstein
Mr. Lewis L. Glucksman
Eugene and Emily Grant
Calla and Ralph Guild
Philip and Elaina Hampton
Stanley and Alice Harris
Daniel P. Hays
Estate of Dorothy H. Hirshon
Frederick J. Iseman
ITT Corporation
Ittleson Foundation, Inc.
Mr. Peter Jennings
Frederico C. Gerdau Johannpeter
The Robert Wood Johnson Jr. Charitable Trust
Paul A. Johnston
Rita J. and Stanley H. Kaplan Family Foundation, Inc.
In memory of Joseph P. Katz
Dr. and Mrs. Robert Kavesh
The Helen and Milton A. Kimmelman Foundation
Beth and Michael Klein
Andrea Klepetar-Fallek
Robert and Myra Kraft
Sallie Krawcheck and Gary Appel



Peter W. May, and Laura and John Pomerantz



Marina Kellen French, Cynthia Sculco, Sir Simon Rattle, and Dr. Thomas P. Sculco

Mr. and Mrs. David Lloyd Kreeger
Michael (Jack) Kugler
Mr. and Mrs. Eugene M. Lang
Mrs. William S. Lasdon
The Lauder Foundation / Leonard and
Evelyn Lauder Fund and Estée Lauder Inc.
Robert and Elaine LeBuhn
The Honorable and Mrs. Samuel J. LeFrak
Lehman Brothers
Mr. and Mrs. Henry J. Leir
Mr. and Mrs. William M. Lese
Robert H. Lessin and Naida Wharton Lessin
Blanche and A. L. Levine and The A. L.
Levine Foundation, Inc.
Mr. and Mrs. George Lindemann
Susan and Martin Lipton
A.L. and Jennie L. Luria Foundation
Mr. and Mrs. Michael T. Masin
William and Helen Mazer
MBNA America Bank, N.A.
Mercedes-Benz of North America, Inc.
Morton and Marlene Meyerson
Mr. and Mrs. Edward H. Michaelsen
Kathryn and Gilbert Miller Fund, Inc.
Minnesota Orchestral Association
Miyazaki Prefectural Arts Center
Mobil Foundation, Inc.
Morgan Stanley
Nabisco Brands, Inc.
Natasha Foundation
Mr. and Mrs. Murray L. Nathan
New Street Capital

The New York Community Trust
New York State Council on the Arts
Newmont Mining Corporation
Diane Allen Nixon
The Octavian Society
Ogilvy & Mather Worldwide
Pandick, Inc.
Ernest E. Pinter Family and
David B. Pinter Family
Paul J. Plishner
Mr. and Mrs. Shepard P. Pollack
Polshek Partnership Architects
Republic National Bank of New York
Mr. and Mrs. David Rockefeller
Mr. and Mrs. Laurance S. Rockefeller
Mr. and Mrs. Daniel Rose
Mr. and Mrs. Lewis Rudin
Mrs. Lisabeth E. Schaub
Schlumberger
In memory of Mrs. Gertrude Schweitzer
Peter Jay Sharp
Ruth Collins Sharp
The Shores Fund
Jeanne and Herbert Siegel
Frank Sinatra
Herbert and Nell Singer
Mary Jean and Frank P. Smeal Foundation
Joan and Joel Smilow
James Thurmond Smithgall
Evelyn and Donald Spiro
Mrs. Kathryn Steinberg
Seymour Sternberg / New York Life
Foundation

Daniel Swarovski Corporations
In memory of Fran Taubkin
Mr. and Mrs. Wilmer J. Thomas Jr.
Laurence A. Tisch and Preston Robert Tisch
Time Warner Inc.
Tishman Realty & Construction Co., Inc.
Miss Alice Tully
Patricia and Lawrence Weinbach / Unisys
Corporation
Volvo North America Corporation
Estate of Iva Walke
Miriam and Ira D. Wallach Foundation
Bruno Walter Memorial Foundation
S. G. Warburg
Warburg Pincus
Theodore and Renée Weiler Foundation, Inc.
George and Joyce Wein Foundation
Westdeutsche Landesbank Girozentrale
Alice Westphal Trust
The Helen F. Whitaker Fund
A.D. Winston Corporation
Witco Corporation
Chuck Prince and Peggy Wolff
Mr. and Mrs. Ying-Sheung Wu
The Xerox Foundation
Mr. Uzi Zucker
Mr. Mortimer B. Zuckerman
Anonymous (2)

As of June 30, 2012



Tova Lefevre, Pablo Schreiber, and Rachelle Lefevre

Notables

The Notables, Carnegie Hall’s membership and ticket program for music enthusiasts in their 20s and 30s, had another incredible season of star-studded events. Members attended a sold-out performance of A. R. Gurney’s *Love Letters* featuring Renée Fleming and Alec Baldwin, celebrated Philip Glass’s 75th birthday with a concert by the American Composers Orchestra and a meet-the-artist reception, and entered the magical musical world of Jim Henson with The New York Pops at the Third Annual Notables Family Party. The Eighth Annual Notable Occasion, generously underwritten by Nicola Bulgari, gave members access to a private concert by Ensemble d’Archi Fenaroli led by conductor Luigi Piovano with violinist Grazia Raimondi, followed by a cocktail and hors d’oeuvre reception. Our deepest gratitude also goes to Jimmy Zankel, a founding member of the Notables program who completed his tenure as chair this season and has been a driving force behind its success since its inception.



Ryan Brown, Jimmy Zankel, Mark Lamos, Adriana Herrera, Renée Fleming, A.R. Gurney, Alec Baldwin, Daniel Montilla, and Alexander Goldberg

Named Endowment Funds

Carnegie Hall honors those donors who have established endowment funds in support of concert and education programming.

Phyllis Barbash Education Fund
The Judith and Anthony B. Evnin Endowment Fund for Young Artists
Fomento Cultural Banamex Fund for International Education
The William Randolph Hearst Endowment for Youth Education and Teacher Training
Stella and Robert Jones Fund for Young Artists
Marma Foundation Fund for Youth Education
Merkin Family Ticket Fund
Ruth Morse Fund for Vocal Excellence
Edward Prager Endowment Fund for Jazz Artists
Isaac Stern Education Fund
Tishman Fund for Education through Technology

As of June 30, 2012



Clive Gillinson, Veronica Bulgari, Ilaria Bulgari, and Nicola Bulgari



Clive Gillinson, Mary Vertin, Lyss Stern, Brooke Shields, Amy Tarr, Caroline Dennis, Christin Rueger, and Sarina Sassoon Sanandaji

The Isaac Stern Society of Carnegie Hall

The Isaac Stern Society honors those individuals who have included Carnegie Hall in their long-range financial plans.

Mrs. Robert Allen
James and Cecilia Alsina
Marilyn Apelson
Isabel Arenas
Cole Ramsay Bader
Arlette Levy Baker
Kathleen Beakley
Dr. Kurt Becker and Joyce Weinstein
Norton Belknap
Davi Bernstein
Kenneth J. Bialkin
Jacqueline Hava Bregman
John Brewer
Sarita and Alex Broden
James A. Brophy Jr.
Lorraine Buch
Eliane Bukantz
Marjorie R. Bukzin
Rochelle Busch
Marlene Butler-Levine
Gloria Piechota Cahill
Castle B. Campbell
Elizabeth Carr
Georgia Carrington
Nora Carrol
Carol Casey
Richard B. Casper
The Reverend Chawanda Charae
Dr. Gilbert R. Cherrick
Vivien Ranschburg Clark
John D. Claypoole
Charles Edward Cole
Malcolm F. Crawford
Mr. and Mrs. Richard A. Debs
Steve and Connie Delehanty
David Dorfman
Domitilia M. dos Santos
Diane C. Dunne
Mrs. Charles H. Dyson
Dr. Joan Eliasoph
Stanley Epstein
Ms. Joan Costaña Ferioli
Stuart M. Fischman

Barbara W. Fox-Bordiga
Fredrick and Ruth Freud
Sheilah Purcell Garcia
Ellen Berland Gibbs
Louis Ginsberg
Dorothy S. Girard
Dalia Carmel Goldstein
Charles and Jane Goldman
Adele Mary Grossman
Jacquelyn C. Harvey
Alan Hewitt Family
Fred Holtz
Mr. W. E. H. Hutchison-Hall IV
Klaus and Karin Jacobs
William Josephson
Carolyn Kane
Theodore D. Karchuta
Mrs. Greta Katzauer
Dr. Robert A. Kavesch
Madeline Kerns
Dr. Jamie Koufman
June T. Leaman
Russell V. Lee
Linda Leven
Shirley Wilkins Liebowitz
Howard K. Lipan
A. Michael and Ruth C. Lipper
Catherine Lomuscio
Archie Mac Gregor
Thomas G. Maheras
William M. and Jacqueline Marks
Charles F. McCown
Christine McKeon
Phyllis Melhado
Michelle G. Miles
Andrew Miller
Dena Simone Moss
Dr. Teresa Mular
Sarah L. Nolin
Eleanore J. Nyilas
Doris M. Ohlsen
Emiko Okawa
Antonia Pew

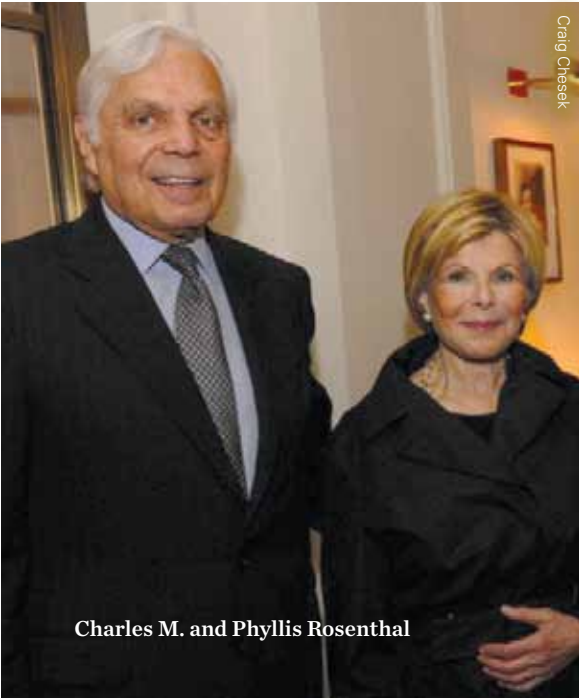
Burton Yale Pines and Helene Brenner
William Raff
William R. Reader, in memory of Lester Bowman
David L. Rhody
Susan W. Rose
Jay and Gladys Rosenthal
Carol and Daniel Ruffo
Ralph N. Sansbury
Karin C. Schiavone
Patrick J. Schiavone
Sue A. Schiller
Steven Schmidt
Hynda Schneiweiss
Myrna Schore
Rosa L. Schupbach
Carol Shedlin
Mr. and Mrs. A. J. C. Smith
Edwin and Ruby Smith
Dr. and Mrs. Peter Som
Edward P. Speiran
Donald Spoto
Gregory St. John and Gary McKay
Jan Stuart
Kenneth Sugarman
Dr. Stewart Taubkin
Dr. Gary Thom
Barbara Tomchin
Dr. Jeffrey H. Toney
Donna Jeanne Turnell, in memory of John C. Hamell
Eleanor Doblin Unger
Joan and Sanford I. Weill
Marshall M. Weinberg
In memory of Rowenna Wight White
Jeffrey Deane Williams
Elaine and Irving Wolbrom
Peter G. Wolff
Debbie Madesker Wolleman
Judy Francis Zankel
Mr. and Mrs. John Zick
Jonas Zweig
Anonymous (21)



Martina Arroyo and Wayne S. Brown



Suki Sandler and Charles J. Seidler



Charles M. and Phyllis Rosenthal

Committees and Councils

Executive Committee

Chair

Sanford I. Weill

Committee

Mercedes T. Bass
Kenneth J. Bialkin
Clarissa Alcock Bronfman
Richard A. Debs
Edward C. Forst
Klaus Jacobs
Sallie L. Krawcheck
Terry J. Lundgren
Thomas G. Maheras
Peter W. May
Joshua L. Nash
Ronald O. Perelman
Laura H. Pomerantz
Burton P. Resnick
S. Donald Sussman

Audit Committee

Chair

John W. Zick

Committee

Gregory T. Durant
Stephen R. Howe Jr.
Dennis M. Nally
William G. Parrett
Lawrence A. Weinbach

Building Committee

Chair

Burton P. Resnick

Committee

Edward C. Forst
Clive Gillinson
Klaus Jacobs

Nominating Committee

Chair

Peter W. May

Committee

Mercedes T. Bass
Sallie L. Krawcheck
Joshua L. Nash
Laura H. Pomerantz
Stanley S. Shuman

Development Committee

Chair

Thomas G. Maheras

Committee

Norton Belknap
Kenneth J. Bialkin
Harold McGraw III
Lester S. Morse Jr.
Laura H. Pomerantz
Suki Sandler

Development Subcommittees

Carnegie Hall Partnership Circle

Chair

Kenneth J. Bialkin

Committee

Norton Belknap
Demetrios A. Boutris
Richard A. Debs
The Honorable Roy M. Goodman
Jonathan Koslow
Michelle Morris
Lawrence A. Weinbach

Corporate Leadership Committee

Chair

Harold McGraw III

Committee

Gregory T. Durant
Stephen R. Howe Jr.
Yoshimi Inaba
Sallie L. Krawcheck
Terry J. Lundgren
Thomas G. Maheras
David J. Mandelbaum
Dennis M. Nally
Dr. Pamela Jane Newman
William G. Parrett
Christopher J. Roberts

Foundation Relations Council

Chair

Norton Belknap

Committee

Richard A. Debs
Judith W. Evnin
Linda R. Franciscovich
Catherine French
W. Loeber Landau
John Morning
Irving Sitnick

The Notables Committee Co-Chairs

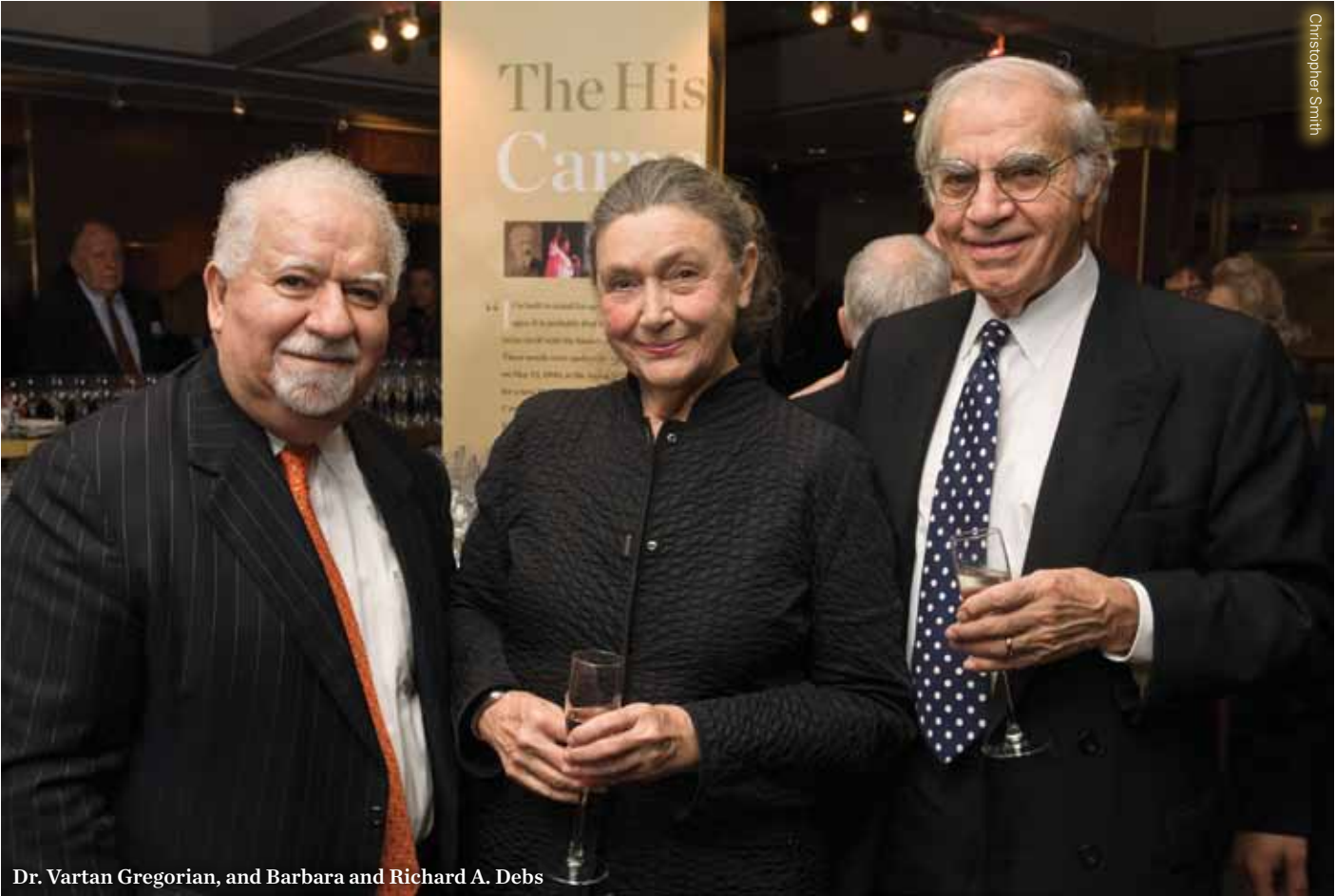
Cody Franchetti
Daniel Montilla
Jimmy Zankel

The Notables Executive Committee

Carrie Cloud
Mary Wible Vertin

The Notables Steering Committee

Wes Anderson
Joshua Bell
James G. Brooks Jr.
Ryan Brown
Veronica Bulgari
Soraya Darabi
Caroline Rocco Dennis



Dr. Vartan Gregorian, and Barbara and Richard A. Debs

Alexander Goldberg
Brian Gorman
Kimberly T. Hastie
Adriana Herrera
Jamie Johnson
Jared Kushner
Dylan Hale Lewis
Audra McDonald
Nico Muhly
Mark Ronson
Christin Barringer Rueger
Sarina Sassoon Sanandaji
Duncan Sheik
Jason Soloway
Amy Tarr

Patron Council

Chair

Suki Sandler

Committee

Norton Belknap
Robert W. Jones
Elaine LeBuhn
Robert LeBuhn
Tess Mateo
Janet W. Prindle
James H. Rosenfield
Cynthia D. Sculco
Charles J. Seidler
Paul J. Sekhri
Kathryn Steinberg

Vera Stern
James B. Stewart Jr.
Douglas D. Thomas
Neil P. Westreich

Real Estate Council

Co-Chairs

Earle S. Altman
Louis S. Brause
Robert Kaufman
Joel Leitner
Lester S. Morse Jr.
Burton P. Resnick
Larry A. Silverstein

Membership Committee

Kyle Warner Blackmon
David Brause
Brian Gorman
Stephanie Goto
Josh Prottas
Jonathan Resnick
Gregg L. Schenker
David S. Winter

Special Events Committee

Chair

Laura H. Pomerantz

Committee

Mickey Beyer

Clarissa Alcock Bronfman
Judith W. Evnin
Arlene Genatt
Katya Gorbatiouk
Sharon King Hoge
Linda M. Lindenbaum
Leni May
Dara Perl binder
Joan Pickett
Judith B. Resnick
Sydney R. Shuman
Vera Stern
Adrienne Vittadini
Joan H. Weill

Finance and Operations Committee

Co-Chairs

Edward C. Forst
William G. Parrett

Committee

Gregory T. Durant
Klaus Jacobs
Gilbert Kaplan
Robert I. Lipp
Thomas G. Maheras
Burton P. Resnick
Stanley S. Shuman
A. J. C. Smith

Investment Committee

Co-Chairs

Joshua L. Nash
S. Donald Sussman

Committee

Richard A. Debs
Edward C. Forst (ex officio)
Robert W. Jones
Thomas G. Maheras
Frank N. Newman

New Ventures and Technologies Committee

Committee

Gilbert Kaplan
Bella L. Linden
Terry J. Lundgren
Peter W. May
Harold McGraw III
Laura H. Pomerantz

The Weill Music Institute Advisory Council

Co-Chairs

Yo-Yo Ma
Joan H. Weill

Committee

Emanuel Ax
Eric Booth
Judith W. Evnin
Edward C. Forst (ex officio)
Valery Gergiev
Willie L. Hill Jr.
Judith Jamison
Lang Lang
Joseph Polisi
Hunter Rawlings III
Susan W. Rose
Thomas J. Schwarz
Larry Scripp
Catherine Stevens
S. Donald Sussman
Dawn Upshaw
Diane Volk
Sanford I. Weill (ex officio)
Judy Francis Zankel



Renée Fleming and Alec Baldwin in *Love Letters*
November 17

Digital Archives Project

This spring marked the launch of another major new initiative that solidifies Carnegie Hall’s status as a leader in the world of music as we enter the 21st century. The Digital Archives Project will enable Carnegie Hall to digitize printed and audiovisual archival collections documenting its 120-year history, ensuring the preservation of these collections for future generations, and enabling greater access to researchers and other visitors both on-site and in the Archives online.

Our deepest appreciation for the major support of this initiative goes to the Carnegie Corporation of New York, which issued a challenge grant that was matched by the Susan and Elihu Rose Foundation with additional significant support from The Andrew W. Mellon Foundation. These generous gifts will enable Carnegie Hall to enter into the first major phase of this comprehensive project to be carried out over the next several years, with total project costs estimated at approximately \$5 million.

Containing more than 300,000 items, the Archives is the permanent and official source for Carnegie Hall’s historical collections that document close to 50,000 performances and events in its three concert halls, construction of the building and its subsequent alterations, and the many notable artists, world figures, and personalities who have graced its stages. The Digital Archives Project represents a new chapter in the development of the Archives, creating a dynamic repository designed to house digital legacy collections and to capture new content and materials developed by Carnegie Hall in support of its artistic and educational initiatives.



Images courtesy of Carnegie Hall Archives



Treasurer’s Review



2012’s comparative fundraising results were \$800,000 higher than those reported in fiscal year 2010, demonstrating the ongoing generous show of support from which Carnegie Hall has benefited in recent years. In addition, pledges received for new major multi-year gifts for future years—including those from The Andrew W. Mellon Foundation, Carnegie Corporation of New York, The Rockefeller Foundation, and The Irene Diamond Fund, Inc.—will be vital in their support of long-term projects, and the growth and development of Carnegie Hall’s vision for the 21st century.

Overall, net assets stood at \$420 million as of June 30, 2012, compared to \$428 million in the previous year. Included in net assets are endowment net assets of \$249 million at year end, compared to \$261 million as of June 30, 2011. While Carnegie Hall, like most other non-profits, faced headwinds in the financial markets, its overall investments decreased modestly by .6% in fiscal year 2012, a return consistent with endowments of a similar size as per the NACUBO–Commonfund Study of Endowments®. The endowment return in fiscal year 2011 resulted in a 17% increase. Carnegie Hall’s endowment draw supporting operations for fiscal year 2012 was \$12.4 million, compared to \$12 million in fiscal year 2011, following the institution’s established spending policy which appropriates a distribution of 5%, calculated on a preceding 20-quarter moving average of the fair market of endowment investments. Carnegie Hall’s endowment received increased contributions of \$1.9 million in fiscal year 2012 as compared to \$1.1 million in fiscal year 2011.

Within fiscal year 2012, Standard & Poor’s Rating Service affirmed Carnegie Hall’s A+ rating on both its Series 2009 bonds and issuer credit rating, citing a strong history of fundraising, good operating revenue diversity, a history of balanced budgetary operations, and a financially supportive board of directors. Excellent progress was also made on the Studio Towers Renovation Project, which will improve the Hall’s backstage areas and create a new education wing on upper floors in support of Carnegie Hall’s mission, making the building more accessible to the public than ever before. With overall costs estimated at \$224.5 million, the project is expected to be completed on schedule by 2014, financed by public and private support as well as from a portion of the proceeds from Carnegie Hall’s Series 2009 bonds.

All we have accomplished over the past year is a reflection of the generosity and dedication of our donors and audience, the excellent work of the Carnegie Hall staff, and the entire Carnegie Hall family. We thank you for this invaluable support as we continue to work together to guarantee that Carnegie Hall remains a place that is treasured and enjoyed for generations to come.

Edward C. Forst
Treasurer

Carnegie Hall sustained its strong financial position in fiscal year 2012, successfully presenting musical performances of the highest quality, creating innovative education and community programs that served an increased number of people, and making meaningful improvements to its landmark building, all while continuing to navigate a challenging world economic environment.

Complementing approximately 180 performances presented by Carnegie Hall on its three stages were education and community programs that served more than 300,000 people in New York City, across the US, and around the globe, a reach made possible, in part, through productive partnerships with other cultural organizations and technology. The groundwork was also laid for a new national educational initiative, the National Youth Orchestra of the United States of America, which will launch in full next year. Operating expenses increased by 4% over the previous year, from \$71.4 million to \$74.3 million, reflecting overall growth of the institution across all programs and activities. On a cash basis, Carnegie Hall balanced its program expenditures with contributions and operating revenues in fiscal year 2012, a season marked by sustained ticket sales for Carnegie Hall presentations and strong income from rental events.

Charitable giving from individuals, corporations, and foundations was strong in fiscal year 2012. Reflecting a calendar of fewer and smaller special events, overall contributions supporting annual operations for the year stood at \$22.8 million, a 6% decrease from fiscal year 2011. Looking back by one additional year, fiscal year

A copy of the latest annual financial report filed with the New York Department of Law may be obtained by writing to Attorney General, State of New York, Charities Bureau, 120 Broadway, New York, NY 10271, or Carnegie Hall, 881 Seventh Avenue, New York, NY 10019-3210.

Carnegie Hall files annual financial statements and continuing disclosure statements with the Municipal Securities Rulemaking Board for its bonds issued through The Trust for Cultural Resources of the City of New York (Series 2009A–Carnegie Hall). Information is available at <http://emma.msrb.org>.

Consolidated Balance Sheet

The Carnegie Hall Corporation and The Carnegie Hall Society, Inc.

	June 30, 2012	June 30, 2011
Assets		
Cash and cash equivalents	\$13,398,000	18,124,000
Contributions receivable, net	52,300,000	76,020,000
Prepaid expenses and other assets	4,830,000	3,652,000
Funds held by Trustee	36,000	8,930,000
Investments	284,194,000	293,166,000
Fixed assets, net	209,934,000	167,226,000
Total assets	\$564,692,000	567,118,000
Liabilities		
Advance sale of tickets and other liabilities	\$17,448,000	18,444,000
Accrued pension benefit obligation	13,834,000	7,158,000
Loans payable—greater than one year	112,934,000	113,710,000
Total liabilities	\$144,216,000	139,312,000
Net Assets		
Unrestricted	\$58,493,000	77,845,000
Temporarily restricted	180,453,000	170,320,000
Permanently restricted	181,530,000	179,641,000
Total net assets	\$420,476,000	427,806,000
Total liabilities and net assets	\$564,692,000	567,118,000

Administrative Staff

Executive Office

Clive Gillinson
Executive and Artistic Director

Catherine Schaefer
Executive Assistant

Administration

Richard Malenka
Director

Susanna Prough
Manager, Capital Projects

Melissa Monterosso
Coordinator

Building Operations

Hugh McCloy
Chief Engineer

Anthony Regno
Facilities Supervisor

Tamika Reid
Manager

Anthony J. Strano
Director, Security

Event Services

Sarah Zeltzer
Manager

Human Resources

Catherine Casella
Director

Allison Meistrell
HR Generalist

Sharice Y. Joseph
HR Coordinator

Office Services

Stephanie Cole-Jacobs
Office Manager

Wesner Bazin
Coordinator

Juan Juarez
Mail Clerk

Mary Ellen Philbin
Receptionist

Development

Susan J. Brady
Director

Jamie Santamour
Associate, Development Services

Christopher Stuart
Database Coordinator

Brian Huff
Coordinator

Hilary Kromnick
Administrative Assistant

Institutional Giving
Corporate Relations and Sponsorships

Dori Fisher
Director

Tiffany Rosenquist
de la Torre
Manager

Siri Comeau
Emily Hom
Assistants

Foundation Relations

Callie Herzog
Manager

Asim Khan
Julia MacAllister
Associates

Samantha Toy
Administrative Assistant

Government Relations

David Freudenthal
Director

Tomoko Shannon
Jessica Silverman
Associates

Grace Gaylord
Administrative Assistant

Individual Giving

Patron Program

Don Spalding
Director, Patron Program and Membership

Kate Vereb
Assistant Director

Luke Gay
Manager, Notables

Haylee Zirman
Administrative Assistant

Friends

Andrew Rubinstein
Associate Director

Karen Chia
Manager

Salley Kim
Administrative Assistant

Planned Gifts and Special Projects

Carl K. Steffes
Director

Laurie Barowski
Associate

Charlotte Daniel
Assistant

Special Events

Kathryn Macky
Director

Ginger Vallen
Associate Director

Ashley Hogan
William Reid
Assistants

Finance

Theodore E. Phillips
Director of Finance

Christine Offermann
Manager, Accounting

Aris Siliverdis
Manager, Financial Reporting

Caroline Bonilla
Corporate Accountant

Matthew Eng
Accountant, Society

Maria Loor
Payroll Administrator

Pamela Harris
Analyst, Hall Operations

Tom Huynh
Analyst, Programming

Alvina Yeung
Coordinator

Information Technology and Interactive Services

Aaron Levine
Chief Information Officer

Morgan Weiss
Administrative Assistant

Information Technology and New Media

Denise Brooks
Director

Afshin Mahabadi
Associate Director, Information Systems

Ed Denning
Manager, Business Applications

Simon Basyuk
Manager, Database Administration

James Boncek
Project Manager

Bronwen Stine
Associate Director, Information Technology

Tak Lai
Manager, Network Architecture

Nick Calamuso
Senior Technical Analyst

Jason Bitman
IT Engineer

Marketing and Creative Services

Naomi Grabel
Director

Tosaporn Sasitorn
Gift Shop Manager

Kate Haar-Lyons
Marketing Coordinator

Publishing and Creative Services

Kathleen Schiaparelli
Director

Alex Ammar
Managing Editor

J. Adams Holman
Assistant Managing Editor

Jay Goodwin
Associate Editor

Carol Ann Cheung
Editorial Assistant

Bernard Hallstein
Senior Art Director

Cherry Liu
Assistant Art Director

Evelyn Ochoa
Graphics Manager

Michael Mallon
Hiromi Park
Senior Graphic Designers

Ross Bonanno
Production Director

Lai Fun Tsui
Production Associate Manager

Marketing and Visitor Services

David Wyeth
Director

Jennifer Hempel
Associate Director, Marketing and Business Development

Michael Naess
Marketing Manager

Amanda Villegas
Marketing Associates

Jesse Yang
Marketing Associates

Ryan Ervin
Manager, Volunteers and Visitor Services

Yeji Cha
Associate

eStrategy

Christopher Gruits
Director

Seamus O'Reilly
Web Content Manager

Carter Hallett
Electronic Marketing Manager

Katie Wudel
Associate Web Producer

Adrienne Stortz
Coordinator

Artistic Planning and Operations

Anna Weber
General Manager, Artistic and Operations

Luyuan Xing
Administrative Assistant

Artistic Planning

Jeremy Geffen
Director

Kathy Schuman
Artistic Administrator

Lea Slusher
Director, Artistic Projects

Andrew Byrne
Manager, Festivals and Special Projects

Patrick Sharpe
Associate Director, Artistic Projects

Alicia Jones
Manager, Program Planning

Jennifer Flores
Manager, Artistic Projects

Leslie Leung
Associate Manager, Program Planning

Victoria King
Associate Manager, Artistic Planning

Wendy Magro
Associate Manager, Artistic Projects

Debby King
Artist Liaison

DeAnna Sherer
Coordinator

Booking

Elaine Georges
Director

Denise Alfaroni
Assistant Director

David Suss
Coordinator

Hall Operations

Joseph Schmaderer
Director of Operations

James A. Gerald
House Manager

Jill Marshall
Associate House Manager

James Badrak
Director of Production

Rachel S. Davis
Thomas F. Eirman

John Lant
Production / Stage Managers

Frank Cardillo
Joshua Reynolds
Jenny Weber
Performance Managers

Leszek Wojcik
Recording Studio Manager

Steven C. Brody
Peter Huitzacua
Operations Managers

Joseph C. Reid
Head Usher

Tim Hays
Administrative Assistant, HMO

Stage Crew

Ken Beltrone
James Csollany
Carpenters

John Cardinale
John Goodson
Electricians

Dennis O'Connell
Properties Manager

The Academy—a program of Carnegie Hall, The Juilliard School, and the Weill Music Institute

Amy Rhodes
Director

Betsie Becker
Manager, Alumni Projects

Lisa McCullough
Manager, Operations

Deanna Kennett
Education and Community Associate Manager

Sue Landis
Program Associate Manager

Public Relations

Synneve Carlino
Director

Matthew Carlson
Assistant Director

Corinne Zadik
Manager

Tonya Bell-Green
Manager

Nate Bachhuber
Samantha Nemeth
Associates

Katlyn Morahan
Coordinator

Veronica Algie
Assistant

Rose Museum and Archives

Gino Francesconi
Museum Director and Archivist

Kathleen Sabogal
Manager, Archives

Robert Hudson
Associate Archivist

Ticketing Services

Timmy Wasley
Director

Mike McCarthy
Treasurer

Joseph Coster
Assistant Treasurer

Valeri Olson
Manager, Subscriptions

Jonathan Bradley
Manager, CarnegieCharge

Terri L. Brown
Ticketing Performance Manager

Rayna Bourke
Ticket Services Manager

Kathleen Maresco
Patron Desk Manager

Erin Etheridge
Associate, Ticketing Services

Nick Singh
Associate Manager, CarnegieCharge

Tatiana Balaban
Associate, CarnegieCharge

Michael Kumor
Beth Nerich

John Nesbitt
Matthew Poulos
Patricia Smith
Joseph Wittleder
Box Office Representatives

Dennette Dyton
Jasmine Reed
Subscription Representatives

Claudia Julian
Kavita Mahabir
Antoinette Rogers
Teresa Wimmer
CarnegieCharge Representatives

Clare L. Freimann
Jerry Gladstein
Samuel Goldman
Leah Green
Rita R. Greenstein
Daniel Linares
Donald Harris
Francine Haselkorn
Ida Henderson

Ann Gregg
Director, Community Programs

Lee Solomon
Jerome E. Strauss

Sheila Navarro
Vincent Navarro
Lilya Nirenberg
Alain Ober
Vicky Oelbaum
John Ong
Lydia Page
Evgenia Pevzner
Barbara Pollack
Bernice Ravitz
Robin Roper
Stephanie Rosenblatt
Alice G. Rothblum
Emily Simeio
Beverly Stern
Norman Strauss

Constance V. Testa
Barbara Todres
Fumi Usuki
Sheila Vincent
Rosily Vogelgesang
Betty Unger
Min Wang
Lillian Wechsler
Florence Weinberg
Sheila Weinstein
Arthur White
Irwin Wolin
Miyako Yamaguchi
Lilia Yanushpolsky
Gloria Young
Xinhan-Jane Zhang

Elizabeth Snodgrass
Manager, Community Programs

Yelena Ingberg
Application Support Specialist

Leah Hollingsworth
Associate, Community Programs

Heather Briere
Associate, School and Family Programs

Erica Westcott
Associate, Secondary School Programs

Elizabeth Ferguson
Coordinator, Community Programs

Jonathon Hampton
Coordinator, Educational Media and Technology

Stephanie Rodousakis
Coordinator, Educational Partnerships

Joseph Soucy
Coordinator, Professional Programs

Laura Costa
Coordinator, Elementary School Programs

Sam Livingston
Coordinator, Education Programs

Tiffany Ortiz
Administrative Assistant, Community Programs

The Richard and Barbara Debs Composer's Chair

Kaija Saariaho

As of June 30, 2012

Music Ambassadors

Carnegie Hall's corps of 163 friendly and informative Music Ambassadors gave just over 4,430 hours of service as information guides, docents, outreach, and staff support volunteers.

Special thanks to the Music Ambassadors who gave over 100 hours of their time during the 2011–2012 season.

Jeffrey Albert
Susan Bein

Betty Burr
Genny Imas

Beatrice Parides
Lotte Rosenthal

Lee Solomon
Jerome E. Strauss

Elaine Usoskin
Manana Zonen

We salute our Music Ambassadors who gave at least 20 hours during the 2011–2012 season.

Luisa F. Alarcon
Fran Alongi
Lucille A. Alonzo
Linda Amster
Andrea L. Becker
Judith King Binney
Haruyo Bonnell
Robert Braff
Rita Brandt
La Verne Bruce
Leslie Burgin
Castle Campbell
Judith L. Cohen
Fred Conroy
Kathy L. Dean
Isabelle Dejean

Sandy Dickson
Nishtha Dwivedi
Peter Eaton
Ellen Ensig-Brodsky
Miriam Epstein
Marta Fisch
Jacqueline J. Fisher
Clarie L. Freimann
Jerry Gladstein
Samuel Goldman
Leah Green
Rita R. Greenstein
Daniel Linares
Donald Harris
Francine Haselkorn
Ida Henderson

Robert Jacklosky
Marian R. Jordan
Elliott Kaback
Bebe Kamerling
Bela Kaplan
David W. Kinne
Ruth Klein
Sandra Kornblit
Anita Krilov
Galina Kudinskaya
Esther Lamis
Barbara Lang
Daniel Linares
Beatrice Livetsky
Jean Mascia
Kendra V. McDaniel

Sheila Navarro
Vincent Navarro
Lilya Nirenberg
Alain Ober
Vicky Oelbaum
John Ong
Lydia Page
Evgenia Pevzner
Barbara Pollack
Bernice Ravitz
Robin Roper
Stephanie Rosenblatt
Alice G. Rothblum
Emily Simeio
Beverly Stern
Norman Strauss

Constance V. Testa
Barbara Todres
Fumi Usuki
Sheila Vincent
Rosily Vogelgesang
Betty Unger
Min Wang
Lillian Wechsler
Florence Weinberg
Sheila Weinstein
Arthur White
Irwin Wolin
Miyako Yamaguchi
Lilia Yanushpolsky
Gloria Young
Xinhan-Jane Zhang

Carnegie Hall's mission is to present extraordinary music and musicians on the three stages of this legendary hall, to bring the transformative power of music to the widest possible audience, to provide visionary education programs, and to foster the future of music through the cultivation of new works, artists, and audiences.

Stefan Cohen



Family Concert: Celso Duarte | December 11

Pete Checchia



Bang on a Can All-Stars | November 5

Jack Vartoogian



Ben Allison | February 3

Steve J. Sherman



Itzhak Perlman with the European Union Youth Orchestra
April 18

Jack Vartoogian



Cheikh Lô | April 20

CARNEGIE HALL

881 Seventh Avenue, New York, NY 10019
212-903-9600 | carnegiehall.org