

Formative Assessment Packet

For each musical concept, there are three formative assessments, one corresponding rubric, and one teacher record sheet. Concepts addressed in the formative assessments include eight musical elements: meter, rhythm, form and design, dynamics, tempo, articulation, pitch, and singing. Select formative assessments also include student worksheets.









Using the Formative Assessments

The formative assessments have been designed so that each includes the following:

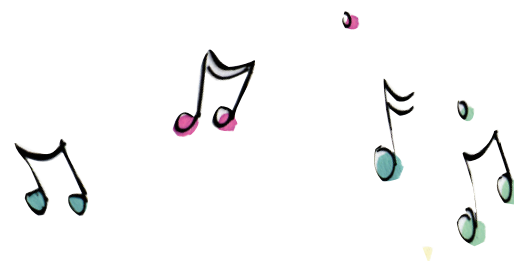
- Performing, responding, and creating tasks
- Solo, small-group, and whole-group work
- Varied modalities for different learning styles
- A scaffold of each musical concept to its summative assessment task

Please note: In order for these assessments to be formative, teachers should facilitate each task in a way that gives students both task performance feedback **and** the opportunity for revision.

Scope of Musical Concepts in the Kindergarten Formative Assessments

Meter	Rhythm	Form and Design	Expressive Qualities			Pitch	Singing
			Dynamics	Tempo	Articulation		
Steady Beat 	Long/Short 	Same/Different 	Loud/Soft 	Fast/Slow 	Connected/Separated 	High/Low 	Voice Types 

Singing



Voice Types

A	B	C	Summative Assessment
<p>Solo/Group Responding Task:</p> <p>Students listen to a given phrase and use agreed-upon gestures or circle the corresponding picture using the student worksheet to indicate the type of voice used (singing, speaking, calling, or whispering).</p>	<p>Solo/Group Performing Task:</p> <p>Students take turns performing phrases of a known song using given voice types.</p>	<p>Solo Creating and Performing Task:</p> <p>Students choose one word (e.g., favorite animal or color) to be repeated two times using two different voice types in the order of their choice. Students perform individually, while partners/group signal the voice types used.</p>	<p>Task 6</p> <p>Identify Voice Types</p> <p>Students listen to the teacher sing, speak, whisper, and shout. On the student worksheet, students circle the pictures of each voice type used.</p>

K Formative
Assessment
Teacher Worksheet

[illegible]

Singing

Name: _____ Date: _____ Class: _____

Listen to the four examples and circle each voice type that you hear.

1



Whispering

Speaking



Singing



Calling

2



Whispering

Speaking



Singing



Calling

3



Whispering

Speaking



Singing



Calling

4



Whispering

Speaking



Singing



Calling