

CARNEGIE HALL

2024–2025 Season

ensemble connect



Fadi Khair

Artistry. Education. Advocacy. Entrepreneurship.

Ensemble Connect is a two-year fellowship program for extraordinary young professional classical musicians residing in the United States that prepares them for careers that combine musical excellence with teaching, community engagement, advocacy, entrepreneurship, and leadership. It offers top-quality performance opportunities, intensive professional development, and partnerships throughout the fellowship with New York City public schools.



Ensemble Connect in Weill Recital Hall



Professional Development Workshop with inti figgis-vizueta and Andrew Yee

Photos by Stefan Cohen, Deanna Kennett, and Paul Kheir

2024–2025 Performance Highlights

In the 2024–2025 season, the musicians of Ensemble Connect begin the second and final year of their fellowship, performing at venues across New York City and beyond. The musicians perform in Carnegie Hall’s Weill Recital Hall and present programs at The Juilliard School’s Paul Hall. Their first concert of the 2024–2025 season is part of Carnegie Hall’s focus on the music of South Africa and features Durban-born composer Andile Khumalo’s *Cry Out*. Other works to be performed during the season include Dvořák’s Piano Quintet No. 2, Berio’s *Ricorrenze per quintetto a fiato—a Pierre Boulez per il suo sessantesimo compleanno*, Coleridge-Taylor’s Nonet, Schubert’s “Quartettsatz” in C Minor.

A Commitment to Music of Our Time

Reflecting its commitment to providing fellows with exceptional opportunities to work with contemporary artists, Carnegie Hall has commissioned 35 composers on behalf of Ensemble Connect since its launch in 2007. Fellows have worked closely with these composers during the creative process to present a total of 40 world-premiere performances, including works by Nathalie Joachim, inti figgis-vizeuta, Michi Wiancko, Shelley Washington, Robert Honstein, Kaija Saariaho, Gabriella Smith, Gabriel Kahane, Andy Akiho, Caroline Shaw, Meredith Monk, Missy Mazzoli, Timo Andres, and more. Next season, Ensemble Connect gives the world and New York premieres of a work by Katherine Balch.

Up Close Concerts Explore Musical Topics with Stellar Collaborators

Ensemble Connect is excited to present its sixth season of *Up Close* concerts in Carnegie Hall’s Resnick Education Wing. This series of “exquisite chamber performances” (*I Care If You Listen*) explores different approaches to presenting classical music by experimenting with concert formats, audience engagement, and multimedia to activate the performance space in new ways. Each season, the fellows collaborate with special guests from across the artistic spectrum to curate themes and a program. In January 2025, Debs Composer’s Chair Gabriela Ortiz joins as artistic partner for an *Up Close* performance that features a world premiere by Carolina Noguera (commissioned by Carnegie Hall). A second *Up Close* performance follows in collaboration with cellist Mike Block and other artists to be announced. More details will be available this fall.

“ Ensemble Connect is nurturing the next generation of musical change-makers who prioritize cultural advocacy and community resilience as much as they do artistic excellence. It was a true joy and inspiration to work alongside Ensemble Connect as both a composer and an educator, and the experience filled me with hope for the future of our field. ”

—Michi Wiancko, Composer

Fellows Continue Partnerships with NYC Public Schools

Ensemble Connect’s school partnerships represent one of the largest and most in-depth collaborations between a cultural institution and New York City public schools. Each fellow is partnered with an instrumental music teacher for a 25-day residency throughout each school year, strengthening students’ musical skills through a creativity-rich approach. During the 2024–2025 season, Ensemble Connect partners with 13 New York City public schools, reaching 4,100 students across the boroughs. In spring 2025, students will have the opportunity to perform at The Juilliard School during the Ensemble Connect Partner School Performance Festival.

“ As a partner teacher with Ensemble Connect since 2010, I can confidently say that every class of my students has gained significantly in its musicality, technique, and love of music from its interaction with the Ensemble Connect fellows. Working closely with their teaching artist has been very inspiring to my students. I have seen my students take their music to a new level of excellence every year. ”

—John Scandone, Partner Teacher at Brooklyn High School for the Arts



Interactive Performance at PS200 The Benson School



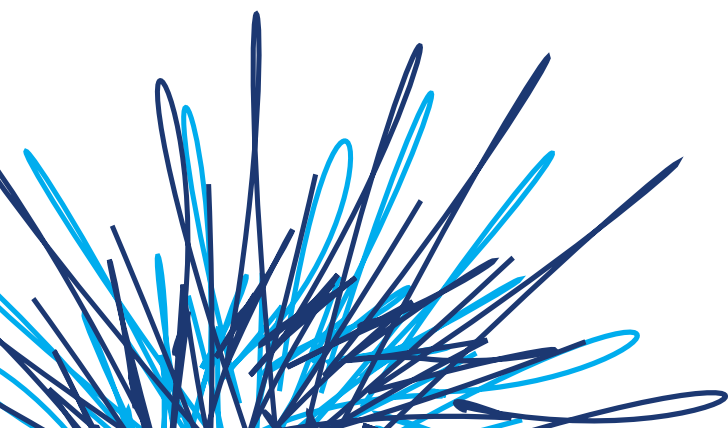
Ensemble Connect Up Close in the Resnick Education Wing

Interactive Performances Cultivate Musical Discovery and Active Listening

In the 2024–2025 season, Ensemble Connect presents nearly 60 interactive performances in schools and community venues across New York City. Interactive performances are designed to invite audiences to explore and discover a piece of music or musical concept, and include listening activities and opportunities for interaction and audience participation aimed at deepening and enriching the concert experience. Fellows give these assembly-style interactive performances for large, school-wide audiences, and adapt them for community venues that include correctional facilities, senior community centers, homeless shelters, and organizations that support people with visual, intellectual, and developmental disabilities.

“ My time in Ensemble Connect was filled with so many different experiences and opportunities to build new skills. At the same time, I was able to continue refining my craft and performance alongside the other amazing musicians in the group. One of my favorite aspects of the program was the process of creating and sharing interactive performances with many different communities around New York City. Ensemble Connect has opened so many doors and career possibilities that I wasn’t aware of before entering the program. ”

—Cort Roberts, 2020–2023 Ensemble Connect Fellow



Ensemble Connect Returns to Skidmore College

For the 18th consecutive year, Ensemble Connect participates in two five-day residencies at Skidmore College, located in Saratoga Springs, New York. During these residencies, the fellows engage with Skidmore College students—as well as the broader Saratoga Springs community—offering master classes, lessons, class demonstrations, interactive performances, and a culminating performance in Skidmore’s Arthur Zankel Music Center, Helen Filene Ladd Concert Hall.

The Connected Musician: Helpful Tools for Musicians Everywhere

The Connected Musician is a self-paced, interactive video series for collegiate and early professional performers, powered by Ensemble Connect. Featuring content from alums of the program and leaders in the field, The Connected Musician introduces a new approach to a career in classical music and provides resources to engage audiences in novel ways. Three modules are currently available to explore. The most recent offers insight on creating and presenting an interactive performance. In the free six-part series, members of Decoda, who are all Ensemble Connect alums, take viewers through a step-by-step process that explains how to put together a successful interactive performance.

“Create a Musical Snapshot” offers bite-sized videos about how musicians can develop a creative introduction to a piece of music by developing their Teaching Artist Toolkit. The third module highlights different paths to feeling inspired and finding joy in careers in music, as Ensemble Connect alums share insights and advice from their own personal journeys, exploring themes of collaboration, meaningful musical moments, building community, finding balance, and staying inspired. A new module on concert programming, with sage insight from leading artists, will be released in the 2024–2025 season.



Fadi Kheir

Partner School Performance Festival

Leading Artists Offer Invaluable Insight Through Professional Development Sessions

Ensemble Connect fellows are supported by a rigorous weekly professional development curriculum aimed at ensuring they have the skills needed to succeed in all areas of the program. Led by expert artists, composers, Ensemble Connect alums, and industry professionals in the fields of performance, teaching artistry and music education, arts management, and others, these professional development sessions help shape purposeful, personally rewarding career paths that redefine the role of the 21st-century musician.

Ensemble Connect Alums Inspire Excellence Around the Globe

Ever since Ensemble Connect was established in 2007, Carnegie Hall has maintained close relationships with the program's alums. As the reputation of this group has grown, demand for work by its now 144 former fellows has developed as well. In 2011, Decoda—an ensemble exclusively made up of Ensemble Connect alums—was formed and later named an affiliate ensemble of Carnegie Hall. Decoda was presented by Carnegie Hall for the first time in concert for two performances in Weill Recital Hall during the 2018–2019 season and will again be presented next season. Alums often perform with current fellows of Ensemble Connect, lead professional development sessions, and serve as advisors to current fellows. Many Ensemble Connect alums are at the forefront of initiatives that use their art form to reach a variety of audiences around the world; examples include Notes with a Purpose in Las Vegas, Musicambia in New York, New Docta International Music Festival in Argentina, Scrag Mountain Music in Vermont, and VOTESart. Alums also hold faculty and guest artist teaching positions at many leading US universities and colleges, and actively perform and engage with communities in more than 53 countries around the world.

ensembleconnect.org/alums

About Ensemble Connect

Ensemble Connect is made up of extraordinary young professional classical musicians residing in the United States who take part in a two-year fellowship program created in 2007 by Carnegie Hall, The Juilliard School, and the Weill Music Institute in partnership with the New York City Department of Education. The program prepares fellows for careers that combine musical excellence with teaching, community engagement, advocacy, entrepreneurship, and leadership by offering top-quality performance opportunities, intensive professional development, and partnerships throughout the fellowship with New York City public schools. On the concert stage and in schools and communities, Ensemble Connect has earned accolades from critics and audiences alike for the quality of the concerts, the fresh and open-minded approach to programming, and the ability to actively engage any audience. Exemplary performers, dedicated teachers, and passionate advocates of music throughout the community, the forward-looking musicians of Ensemble Connect are redefining what it means to be a musician in the 21st century.

Ensemble Connect is a program of Carnegie Hall, The Juilliard School, and the Weill Music Institute in partnership with the New York City Department of Education.

Lead funding has been provided by Marina Kellen French and the Anna-Maria and Stephen Kellen Delmas Foundation, E.H.A. Foundation, Mr. and Mrs. Anthony B. Evnin and the A.E. Charitable Foundation, Barbara G. Fleischman, Clive and Anya Gillinson, Marc Haas Foundation, Stella and Robert Jones, Martha and Robert Lipp, Leslie and Tom Maheras, Andrew J. Martin-Weber, Lauren and Ezra Merkin, Beth and Joshua Nash, Rockefeller Brothers Fund, Susan and Elihu Rose Foundation, Melanie and Jean E. Salata, The Morris and Alma Schapiro Fund, Sarah Billingshurst Solomon and Howard Solomon, Carlos Tome and Theresa Kim, Joyce and George Wein Foundation, Inc., Linda Wachner, David S. Winter, and Judy Francis Zankel.

Global Ambassadors: Michael ByungJu Kim and Kyung Ah Park, Hope and Robert F. Smith, and Maggie and Richard Tsai.

Additional support has been provided by the Alphadyne Foundation, Arnow Family Fund, the Mercedes T. Bass Charitable Corporation, Ronald E. Blaylock and Petra Pope, The Gladys Kriebel Delmas Foundation, E.H.A. Foundation, Mr. and Mrs. Anthony B. Evnin and the A.E. Charitable Foundation, Barbara G. Fleischman, Clive and Anya Gillinson, Marc Haas Foundation, Stella and Robert Jones, Martha and Robert Lipp, Leslie and Tom Maheras, Andrew J. Martin-Weber, Lauren and Ezra Merkin, Beth and Joshua Nash, Rockefeller Brothers Fund, Susan and Elihu Rose Foundation, Melanie and Jean E. Salata, The Morris and Alma Schapiro Fund, Sarah Billingshurst Solomon and Howard Solomon, Carlos Tome and Theresa Kim, Joyce and George Wein Foundation, Inc., Linda Wachner, David S. Winter, and Judy Francis Zankel.

Public support is provided by the New York City Department of Education.

Ensemble Connect is also supported, in part, by endowment grants from The Kovner Foundation and the Estate of Eleanor Doblin Unger.

