

CARNEGIE HALL

presents



12
13 Season
Annual Report



Ryan Silverman and Megan Hilty with Steven Reineke and The New York Pops | March 8

Stephanie Berger

CARNEGIE HALL

12 13 Season Annual Report

- 2 From the Chairman of the Board
- 4 From the Executive and Artistic Director
- 6 Board of Trustees
- 8 2012–2013 Concert Season
- 31 Digital Archives Project
- 32 Weill Music Institute
- 46 The Academy
- 50 Studio Towers Renovation Project
- 52 Donors
- 72 Treasurer’s Review
- 73 Consolidated Balance Sheet
- 74 Administrative Staff and Music Ambassadors

Cover photo: Gustavo Dudamel (December 11) by Chris Lee.

Bank of America 
Proud Season Sponsor

From the Chairman of the Board



Dear Friends,

It is my pleasure to present you with Carnegie Hall's 2012–2013 Annual Report. Thanks to your generosity, the following pages recall a season of artistic triumphs and public service, filled with memorable performances on our three great stages by the world's foremost artists and ensembles, and inspirational education programs in our schools and communities that served new audiences on local, national, and international levels. Carnegie Hall believes in the singular ability of music to bring people together and make meaningful connections between them, to bridge cultural divides, and to foster mutual understanding and respect. It is for these reasons that Carnegie Hall continues to grow in its role as a global citizen, working to bring the transformative power of music to the widest possible audience.

Evidence of this can be seen in the wide range of our education work. It is with pride that I note our creation of the first-ever National Youth Orchestra of the United States of America (NYO-USA), whose talented young musicians, ages 16–19, served as global ambassadors for the US during their inaugural international tour last summer with stops in Washington, DC; Moscow; St. Petersburg; and London. Link Up, our flagship program which for more than a quarter of a century has taught students in grades 3–5 about orchestral music, witnessed significant expansion last season and served more than 250,000 students in North America, Spain, and Japan as Carnegie Hall shared its resources and provided curricula and teacher training to participants at no charge. In addition, alumni from The Academy—the widely recognized two-year program for young professional musicians created by Carnegie Hall, The Juilliard School, and the Weill Music Institute in partnership with the New York City Department of Education—held international residencies in Hong Kong, Germany, and the United Arab Emirates, engaging audiences through lively programs in concert halls, schools, and community venues.

Here at home, Carnegie Hall made significant progress with its Studio Towers Renovation Project, an ambitious undertaking that upon its completion in 2014 will provide Carnegie Hall with the physical resources to ensure that it remains the premier destination for the world's great artists and a major force for music education. We look forward to celebrating the opening of our new Education Wing, Roof Terrace, state-of-the-art Archives, and artist support spaces with you next fall.

None of these extraordinary endeavors would have been possible without you, our generous and committed donors. Your generosity enables Carnegie Hall to expand, thrive, and continue to bring exceptional music to our local and global audiences. I especially want to thank our NYO-USA lead donors, who have provided a solid financial foundation for this

new initiative. The indelible impression that NYO-USA will forever make on these young people's lives would not have been possible without the generous support of Bloomberg, the Anna-Maria and Stephen Kellen Foundation and Marina Kellen French, Ronald O. Perelman, and Julian Robertson / Robertson Foundation.

With deepest gratitude, I also acknowledge the leadership of our gala events last season that provided essential funding for our artistic, education, and community programs. Accolades go to Opening Night Gala Chairs Mercedes T. Bass, Annette and Oscar de la Renta, and Mrs. Julio Mario Santo Domingo, and to Co-Chairs Marie-Josée and Henry R. Kravis, Leni and Peter W. May, Judith and Burton P. Resnick, and Ann Ziff. I also thank Dennis M. Nally and PwC for underwriting the Opening Night Gala for the eighth consecutive season, and Terry J. Lundgren and Macy's for underwriting the Gala Journal for the seventh straight year. The Carnegie Hall Medal of Excellence was awarded last season to fellow trustee Robert K. Kraft in recognition of his outstanding business accomplishments and philanthropic work. For their dedication and generosity in making this event a huge financial success, I applaud my fellow gala chairs Brian T. Moynihan, Anne M. Finucane, Edward C. Forst, Jack Connors Jr., Jerral W. Jones, Terry J. Lundgren, Lowell C. McAdam, and Ronald O. Perelman.

Our season would not have been possible without the backing of our many generous partner corporations and foundations. In particular, we thank Bank of America, our season sponsor for the eighth consecutive year. We also express heartfelt gratitude to our partners in government at all levels, and particularly to our elected city officials—Mayor Michael R. Bloomberg, Manhattan Borough President Scott M. Stringer, and City Council Speaker Christine C. Quinn—as well as Department of Cultural Affairs Commissioner Kate D. Levin, who have been extraordinarily supportive of Carnegie Hall during their tenure in office. As we welcome the new administration in 2014, we give a standing ovation to Mayor Mike, Scott, Christine, and Kate for their steadfast belief in Carnegie Hall's mission and their stalwart efforts in supporting it.

In reflecting upon the past year, I also wish to express my deep appreciation to all of my colleagues on the Board of Trustees, whose generosity and guidance are invaluable to Carnegie Hall. Nowhere is this more evident than in the board's oversight of Carnegie Hall's finances, which led to a balanced budget for the 18th consecutive season in 2012–2013 as well as exceptional growth in endowment. At a time when many arts organizations in New York and across the United States are struggling due to financial pressures, I hope that you find it reassuring to know that your contributions to Carnegie Hall are being spent judiciously and that the Hall's finances are in expert hands.

As we close the book on 2012–2013, I gratefully acknowledge departing trustee Frederick J. Iseman for his many contributions to Carnegie Hall, and I welcome new trustees Earle S. Altman, Charles M. Rosenthal, Suzie Kovner, Donald M. Randel, and David M. Siegel. Lastly, I salute Executive and Artistic Director Clive Gillinson for his exemplary leadership, and the entire Carnegie Hall staff for their dedication and hard work. Bravo to all!

It is an exciting time at Carnegie Hall, as we broaden our impact around the globe and play a growing role on the world's stage. We thank you for all that you do to make this possible.

Sincerely,

A handwritten signature in black ink, appearing to read "Sanford I. Weill". The signature is fluid and cursive.

Sanford I. Weill
Chairman of the Board

From the Executive and Artistic Director



Dear Friends,

Since 1891, Carnegie Hall has set the international standard for musical excellence. For well over a century, its stages have been the aspirational destination for the finest artists and ensembles from around the globe. Across generations, the Hall has been a beloved place that attracts dedicated audiences, drawing people together to experience the best in music and, on many occasions, history in the making.

Our programming approach to the 2012–2013 season grew out of our long-held tradition of partnering with the greatest musicians and ensembles, exploring engaging ideas that captivate them as well as us. A rich collection of 170 diverse concerts and events last season spanned all musical genres—classical, world music, pop, and jazz—with amazing performances by artists that represented traditions originating from all around the world.

At the heart of the season was *Voices from Latin America*, an expansive citywide festival with more than 70 events that paid tribute to the important contributions that Latin America has made to US and world culture. Four remarkable joint artistic advisors—Chucho Valdés, Gilberto Gil, Osvaldo Golijov, and Gustavo Dudamel—were our guides. Music by Osvaldo Golijov, holder of Carnegie Hall’s Richard and Barbara Debs Composer’s Chair, was featured throughout the year. Central to Osvaldo’s residency was his inspirational work with 120 New York City high school singers who took to the Carnegie Hall stage for a performance of his groundbreaking oratorio, *La Pasión según San Marcos*. Audiences were enthralled by soprano Renée Fleming’s insightful four-concert *Perspectives*, a series that beautifully showcased her versatile artistry and great musical curiosity. In addition, among many other season highlights, a complete Beethoven symphony cycle by Daniel Barenboim and his West-Eastern Divan Orchestra, an ensemble that comprised musicians from Israel and Arab countries, was not only musically thrilling, but also a poignant reminder of the power that music can have to bridge divides, helping to make meaningful connections between people.

This tradition of great performances remains central to all we do at Carnegie Hall as we look to the future, building on our legacy of artistic and educational excellence in new and interesting ways. Harnessing technology and strong partnerships with other organizations, we look outward more and more, exploring how the Hall can best serve growing audiences across New York City, around the country, and worldwide as we expand the circle of people from all walks of life who engage with great music through Carnegie Hall’s programs.

Through far-reaching and visionary music education programs and online educational initiatives created by Carnegie Hall’s Weill Music Institute (WMI), the Hall reached more than 350,000 young people, teachers, aspiring musicians, and music lovers last year, including tens of thousands of students in New York City public schools. Our goal is always to find creative ways to connect people of all ages to dynamic and inventive musical experiences, often in collaboration with world-class artists both on the stages of Carnegie Hall and in their own schools and communities. As part of our public service mission, we also seek to give back to the arts field, providing free music resources like our Link Up curriculum materials for grade school students to orchestras nationally and internationally, free training for music educators, and other programmatic knowledge in ways that benefit others.

With programs like the National Youth Orchestra of the United States of America (NYO-USA), which was officially launched by WMI in summer 2013 to international acclaim, we are creating ambitious new initiatives in ways that only a major institution like Carnegie Hall can. From the orchestra’s very first note to its final bows on its inaugural tour, audiences were swept up in the exciting energy of this new ensemble, and the ripple effect in its first year has already been considerable. In addition to providing young players with the opportunity to train at the highest level each summer, our hope is also that the program will play a role in lifting national standards year-round, shining a spotlight on the important work being done in outstanding youth orchestras and music programs across the US and encouraging NYO-USA’s young members to take their new level of experience and infectious enthusiasm for music back to their own communities. The creation of the orchestra deepens Carnegie Hall’s longtime commitment to young artist development, which is exemplified by an array of WMI workshops and master classes with leading artists offered each season as well as innovative programs like *The Academy*—now completing its fifth year—which trains and challenges the finest young professional musicians to develop varied careers that combine the best in performance, education, and advocacy.

The completion of Carnegie Hall’s Studio Towers Renovation Project will soon usher in an especially exciting time for the institution, as our landmark building becomes more accessible to the public than ever before. Modernized backstage facilities for artists and new inspirational spaces for music education on our upper floors will open the doors to new possibilities, supporting programs that allow us to reach audiences far beyond the confines of Carnegie Hall’s walls.

As we consider all that has been achieved over the past season and look ahead to new musical adventures, we know that everything we have achieved is thanks to the hard work and dedication of all those who are part of the Carnegie Hall family: our artists, concertgoers, trustees, supporters, volunteers, partners, and staff. Together, we are making a difference, continuing to re-imagine what Carnegie Hall can mean to New York City and the world in the 21st century, and ensuring that the Hall remains as relevant to the future of music as it has been to the past. We deeply appreciate your support and your belief in Carnegie Hall. Thanks to you, we look forward to sharing memorable musical experiences for many more seasons to come.

With all best wishes,

A handwritten signature in black ink, appearing to read "Clive Gillinson". The signature is fluid and cursive, with a large initial "C" and "G".

Clive Gillinson
Executive and Artistic Director

Board of Trustees

Officers

Sanford I. Weill, *Chairman*
 Mercedes T. Bass, *Vice Chairman*
 Clarissa Alcock Bronfman, *Vice Chairman*
 Klaus Jacobs, *Vice Chairman*
 Peter W. May, *Vice Chairman*
 Ronald O. Perelman, *Vice Chairman*
 Burton P. Resnick, *Vice Chairman*
 Kenneth J. Bialkin, *Secretary*
 Edward C. Forst, *Treasurer*
 Clive Gillinson,
Executive and Artistic Director

Chairmen Emeriti

Richard A. Debs
 James D. Wolfensohn

Trustees

Earle S. Altman
 Martina Arroyo
 Emanuel Ax
 Mercedes T. Bass
 Norton Belknap
 Kenneth J. Bialkin
 Ronald E. Blaylock
 Clarissa Alcock Bronfman
 Nicola Bulgari
 Yoko Nagae Ceschina
 Richard A. Debs

Gregory T. Durant
 Judith W. Evnin
 Anne M. Finucane
 Renée Fleming
 Edward C. Forst
 Marina Kellen French
 Clive Gillinson
 The Honorable Roy M. Goodman
 Marilyn Horne
 Stephen R. Howe Jr.
 Frederick J. Iseman
 Klaus Jacobs
 Robert W. Jones
 Gilbert Kaplan
 Mark E. Kingdon
 Suzie Kovner
 Robert K. Kraft
 Sallie L. Krawcheck
 Lang Lang
 Robert I. Lipp
 Terry J. Lundgren
 Yo-Yo Ma
 Thomas G. Maheras
 Peter W. May
 Audra McDonald
 Harold McGraw III
 Lester S. Morse Jr.
 Dennis M. Nally
 Joshua L. Nash
 Frank N. Newman
 Jessye Norman
 William G. Parrett
 Ronald O. Perelman
 Laura H. Pomerantz
 Don M. Randel
 Oscar de la Renta
 Burton P. Resnick
 Judith Rodin
 William D. Rondina
 Susan W. Rose
 Charles M. Rosenthal
 Sana H. Sabbagh
 Suki Sandler

Mrs. Julio Mario Santo Domingo
 Dr. Thomas P. Sculco
 Henry T. Segerstrom
 Stanley S. Shuman
 David M. Siegel
 A. J. C. Smith
 Sir Howard Stringer
 Kurt G. Strovink
 S. Donald Sussman
 James Taylor
 Linda J. Wachner
 Sanford I. Weill
 James D. Wolfensohn
 Judy Francis Zankel
 John W. Zick
 Ann Ziff

Trustee Fellow

Robert F. Arning

Advisory Directors

Dame Vivien Duffield
 Sherry Liu
 Tracy Long

Honorary Trustees

Ralph M. Baruch
 Pierre Boulez
 Roberta Peters
 The Honorable Felix G. Rohatyn
 George T. Wein

Ex Officio Trustees

Michael R. Bloomberg,
Mayor of the City of New York
 Christine C. Quinn,
Speaker, New York City Council
 Scott M. Stringer,
Manhattan Borough President
 Kate D. Levin,
Commissioner, New York City Department of Cultural Affairs

As of June 30, 2013



From left to right:

Row 1: Marilyn Horne, Sanford I. Weill, Marina Kellen French, Ann Ziff, Clive Gillinson
Row 2: Oscar de la Renta, Renée Fleming, Judy Francis Zankel, Norton Belknap, Judith W. Evnin, Mayor's Representative Allison Jaffin, Linda J. Wachner
Row 3: Mrs. Julio Mario Santo Domingo, Robert K. Kraft, Anne M. Finucane, Thomas G. Maheras, Edward C. Forst, Peter W. May, Robert W. Jones, Susan W. Rose
Row 4: Kenneth J. Bialkin, Stanley S. Shuman, Robert I. Lipp, Burton P. Resnick, John W. Zick, Kurt G. Strovink
Row 5: Laura H. Pomerantz, Dennis M. Nally, Ronald E. Blaylock, Terry J. Lundgren, Trustee Fellow Robert F. Arning, A. J. C. Smith

Missing from photo: Trustees Earle S. Altman, Martina Arroyo, Emanuel Ax, Mercedes T. Bass, Clarissa Alcock Bronfman, Nicola Bulgari, Yoko Nagae Ceschina, Richard A. Debs, Gregory T. Durant, The Honorable Roy M. Goodman, Stephen R. Howe Jr., Frederick J. Iseman, Klaus Jacobs, Gilbert Kaplan, Mark E. Kingdon, Suzanne Kovner, Sallie L. Krawcheck, Lang Lang, Yo-Yo Ma, Audra McDonald, Harold McGraw III, Lester S. Morse Jr., Joshua L. Nash, Frank N. Newman, Jessye Norman, William G. Parrett, Ronald O. Perelman, Don M. Randel, Judith Rodin, William D. Rondina, Charles M. Rosenthal, Sana H. Sabbagh, Suki Sandler, Thomas P. Sculco M.D., Henry T. Segerstrom, David M. Siegel, Sir Howard Stringer, S. Donald Sussman, James Taylor, James D. Wolfensohn; Advisory Directors Dame Vivien Duffield, Sherry Liu, Tracy Long; Ex Officio Trustees Mayor Michael R. Bloomberg, City Council Speaker Christine C. Quinn, Manhattan Borough President Scott M. Stringer, Department of Cultural Affairs Commissioner Kate D. Levin; Honorary Trustees Ralph M. Baruch, Pierre Boulez, Roberta Peters, The Honorable Felix G. Rohatyn, George T. Wein

Carnegie Hall is owned by the City of New York, and its operation is made possible, in part, by public funds provided through the New York City Department of Cultural Affairs.

12 Concert 13 Season

Carnegie Hall presented a season of artistic excellence and musical diversity, as the finest musicians from around the globe performed in 2012–2013. It was a season of compelling stories told in countless musical styles, from the earthy poetry of Carl Orff's *Carmina Burana* with the Chicago Symphony Orchestra and Chorus conducted by Riccardo Muti on Opening Night, to exotic throat-singing by Alash, from the Siberian Republic of Tuva, in a Zankel Hall concert. Joyce DiDonato gave voice to love, grief, and rage in *Drama Queens*, a concert of Baroque arias sung by royal characters, while Gabriel Kahane brilliantly blurred the lines between classical and popular song.

With memorable debuts and a host of commissions and premieres, the season celebrated the present while also looking to a brilliant future. Daniil Trifonov became the latest in a long line of great Russian pianists to make a thrilling Carnegie Hall recital debut; mezzo-soprano Elina Garanča sang an impassioned recital; and Yannick Nézet-Séguin made his electrifying New York debut as The Philadelphia Orchestra's music director and conductor. There was also an ongoing commitment to new music with 14 commissioned works, and 18 world, 12 US, and 21 New York premieres.

In addition to the compelling performances found on Carnegie Hall's three stages, audiences expanded their horizons further with Discovery Days, focusing on Venezuela's remarkable El Sistema social action program, and, to commemorate the 100th anniversary of the premiere of Stravinsky's *The Rite of Spring*, a round-table discussion of this most influential work.

These concerts only scratch the surface of what was presented in a season that reflected Carnegie Hall's brilliant legacy while looking toward its boundless future.



Chris Lee

Riccardo Muti and the Chicago Symphony Orchestra and Chorus at Carnegie Hall's Opening Night Gala | October 3

October



Susan Graham, Sheldon Harnick, Josh Groban, John Pizzarelli, Barbara Cook, Jessica Molasky, Ted Rosenthal, and Lee Musiker at Barbara Cook's 85th Birthday Concert | October 18

Richard Termine

Wednesday, October 3 at 7 PM | Stern/Perelman
Chicago Symphony Orchestra

Riccardo Muti, Music Director and Conductor
Rosa Feola, Soprano
Antonio Giovannini, Countertenor
Audun Iversen, Baritone
Chicago Symphony Chorus
Duain Wolfe, Chorus Director
Chicago Children's Choir
Josephine Lee, Artistic Director

Thursday, October 4 at 8 PM | Stern/Perelman
Chicago Symphony Orchestra

Riccardo Muti, Music Director and Conductor

Friday, October 5 at 8 PM | Stern/Perelman
Chicago Symphony Orchestra

Riccardo Muti, Music Director and Conductor

Friday, October 12 at 7:30 PM | Weill
Philharmonia Quartett Berlin

Friday, October 12 at 8 PM | Stern/Perelman
The New York Pops

Steven Reineke, Music Director and Conductor
Aaron Lazar, Guest Artist
Kelli O'Hara, Guest Artist
Paulo Szot, Guest Artist
Essential Voices USA
Judith Clurman, Music Director and Conductor
New York Theatre Ballet
Diana Byer, Artistic Director

Sunday, October 14 at 3 PM | Stern/Perelman
The MET Orchestra

Semyon Bychkov, Conductor
Michelle DeYoung, Mezzo-Soprano

Wednesday, October 17 at 8 PM | Stern/Perelman
Ukulele Orchestra of Great Britain

Thursday, October 18 at 8 PM | Stern/Perelman
Barbara Cook

Ted Rosenthal, Music Director and Piano
Lee Musiker, Music Director and Piano
With surprise guests
Susan Graham
Josh Groban
Sheldon Harnick
Jessica Molasky
John Pizzarelli

Friday, October 19 at 8 PM | Stern/Perelman
World Orchestra for Peace

Valery Gergiev, Conductor
Lady Solti, Presenter
Angela Gheorghiu, Soprano
René Pape, Bass
Alumni of the Solti Accademia
Cristian Macelaru, Conductor (Solti Foundation US Conductor Award Laureate)

Saturday, October 20 at 10 PM | Zankel
Thomas Mapfumo

The Blacks Unlimited

Monday, October 22 at 7:30 PM | Zankel
Les Violons du Roy

Bernard Labadie, Music Director and Conductor
Emmanuel Pahud, Flute

Monday, October 22 at 7:30 PM | Weill
Ensemble ACJW

Tuesday, October 23 at 8 PM | Stern/Perelman
The Philadelphia Orchestra

Yannick Nézet-Séguin, Music Director and Conductor
Marina Poplavskaya, Soprano
Christine Rice, Mezzo-Soprano
Rolando Villazón, Tenor
Mikhail Petrenko, Bass
Westminster Symphonic Choir
Joe Miller, Conductor

Wednesday, October 24 at 7:30 PM | Zankel
Standard Time with Michael Feinstein

Michael Feinstein, Artistic Director
With Special Guests
Judy Kaye
Musicians from the New York Philharmonic
Dennis Buck, Piano

Wednesday, October 24 at 7:30 PM | Weill
Alexandre Tharaud, Piano

Thursday, October 25 at 7:30 PM | Zankel
Gabriel Kahane: Don't Even Listen

Gabriel Kahane, Piano, Reed Organ, Guitar, and Vocals
Shara Worden, Reed Organ, Guitar, and Vocals
Brooklyn Rider

Friday, October 26 at 7:30 PM | Zankel
American Composers Orchestra

José Serebrier, Guest Conductor
Sharon Bezaly, Flute
Lori Cotler, Vocals
Milica Paranosic, Gusle
Carmen Kordas, Video
Beowulf Sheehan, Photography

Friday, October 26 at 7:30 PM | Weill
Marlis Petersen, Soprano
Jendrik Springer, Piano

Saturday, October 27 at 7:30 PM | Stern/Perelman
Atlanta Symphony Orchestra

Robert Spano, Music Director and Conductor
John Holiday, Countertenor
Brett Pologato, Baritone
Atlanta Symphony Orchestra Chorus
Norman Mackenzie, Director of Choruses

Saturday, October 27 at 10 PM | Zankel
John McCauley and Friends

John McCauley
With Special Guests
Deer Tick
Diamond Rugs
Jason Isbell
Mark Sultan
Langhorne Slim
Adam Cayton-Holland



Alexandre Tharaud | October 24



Brett Pologato with Robert Spano and the Atlanta Symphony Orchestra | October 27



John McCauley and Friends | October 27

November

Sunday, November 4 at 7:30 PM | Avery Fisher Hall

Murray Perahia

Event relocated due to Hurricane Sandy.

Wednesday, November 7 at 7:30 PM | Zankel

Belcea Quartet

Wednesday, November 7 at 8 PM | Stern/Perelman

Midori, Violin

Özgür Aydin, Piano

Thursday, November 8 at 8 PM | Stern/Perelman

Gilberto Gil

Part of *Voices from Latin America*.

Friday, November 9 at 7:30 PM | Zankel

Belcea Quartet

Friday, November 9 at 7:30 PM | Weill

Erin Keefe, Violin

Anna Polonsky, Piano

Friday, November 9 at 8 PM | Stern/Perelman

The New York Pops

Steven Reineke, Music Director and Conductor

Saturday, November 10 at 1 PM | Zankel

Family Concert: Intercultural Journeys East Meets West

Ricardo Morales, Clarinetist

Hafez El Ali Kotain, Drums

Phyllis Chapell, Voice

Udi Bar-David, Cello

Jiebing Chen, Erhu

Charlotte Blake Alston, Host

Tuesday, November 13 at 8 PM | Stern/Perelman

The Cleveland Orchestra

Franz Welser-Möst, Music Director and Conductor

Michael Sachs, Trumpet

Jack Sutte, Trumpet

Thursday, November 15 at 7:30 PM | Weill

Apollon Musagète Quartet

Thursday, November 15 at 8 PM | Stern/Perelman

Pierre-Laurent Aimard, Piano

Friday, November 16 at 7 PM | Stern/Perelman

**Orchestre Révolutionnaire et Romantique
The Monteverdi Choir**

Sir John Eliot Gardiner, Artistic Director and Conductor

Elisabeth Meister, Soprano

Jennifer Johnston, Mezzo-Soprano

Michael Spyres, Tenor

Matthew Rose, Bass

Friday, November 16 at 9 PM | Zankel

Dayramir and Habana enTRANCE

Dayramir Gonzalez, Piano

Yosvany Terry, Alto Saxophone, Vocals, and Percussion

Luis Faife, Tenor Saxophone and Flute

Yunior Terry, Bass

Richie Flores, Percussion

Obed Calvaire, Drums

Aldo López-Gavilán Quartet

Aldo López-Gavilán, Piano

Roberto Martínez, Saxophone

Raúl Gil, Bass

Ruy Adrián López-Nussa, Drums

With special guest Ilmar López-Gavilán, Violin

Part of *Voices from Latin America*.

Jack Vartanian



Aldo López-Gavilán | November 16

Voices from Latin America

The citywide *Voices from Latin America* festival was an unprecedented celebration of one of the world's richest cultures and its influence on the world. Curated by four iconic musicians—composer Osvaldo Golijov (holder of the 2012–2013 Richard and Barbara Debs Composer's Chair), singer-songwriter Gilberto Gil, jazz pianist and composer Chucho Valdés, and conductor Gustavo Dudamel—the festival presented more than 70 events encompassing music, dance, film, photography, and visual arts at Carnegie Hall and a dozen partner institutions.

The musical melting pot that is Brazil was explored with Gilberto Gil. Chucho Valdés's Cuban series presented groundbreaking young artists, time-honored veterans, and the spellbinding ritual traditions of incendiary Afro-Cuban music. Gustavo Dudamel and the Simón Bolívar Symphony Orchestra of Venezuela were featured in a residency that offered symphonic and chamber music, and in a special Discovery Day, Dudamel shared insights into the renowned El Sistema music education program in his homeland.

Carnegie Hall also worked with Celebrate México Now, a festival of contemporary Mexican art and culture, to present an evening of traditional and contemporary Mexican song honoring the late legendary singer Chavela Vargas.



Richard Termine

Belcea Quartet | November 7



Jennifer Taylor

Gilberto Gil | November 8



Chris Lee

Sir John Eliot Gardiner and the Orchestre Révolutionnaire et Romantique | November 17



Steve J. Sherman

Joyce DiDonato | November 18

Saturday, November 17 at 7:30 PM | Stern/Perelman
Orchestre Révolutionnaire et Romantique
The Monteverdi Choir
 Sir John Eliot Gardiner, Artistic Director and Conductor
 Elisabeth Meister, Soprano
 Jennifer Johnston, Mezzo-Soprano
 Michael Spyres, Tenor
 Matthew Rose, Bass

Saturday, November 17 at 10 PM | Zankel
Lisa Marie Presley

Sunday, November 18 at 2 PM | Stern/Perelman
Joyce DiDonato, Mezzo-Soprano
 Il Complesso Barocco
 Dmitry Sinkovsky, Director and Violin

Tuesday, November 27 at 8 PM | Stern/Perelman
A Tribute to Chavela Vargas
 Ely Guerra | Eugenia León | Tania Libertad
 Part of *Voices from Latin America*.

Wednesday, November 28 at 8 PM | Stern/Perelman
Paulinho da Viola
 Part of *Voices from Latin America*.

Thursday, November 29 at 8:30 PM | Zankel
Carlos Malta and Pife Muderno
Nicolas Krassik and Cordestinos with Friends
 Part of *Voices from Latin America*.

Friday, November 30 at 9:30 PM | Zankel
Yoruba Andabo
 Part of *Voices from Latin America*.



Julien Jourdes

Carlos Malta (right) and Pife Muderno | November 29



Stephane Berger

Yoruba Andabo | November 30

December



Jennifer Taylor

Chucho Valdés, Egberto Gismonti, Danilo Pérez, and Gonzalo Rubalcaba | December 4

Saturday, December 1 at 9 PM | Zankel
Chucho Valdés Quintet
 Chucho Valdés, Piano
 Yaroldy Abreu Robles, Percussion
 Dreiser Durruthy Bombalé, Bata Drum and Vocals
 Rodney Yllarza Barreto, Drums
 Angel Gaston Joya Perellada, Bass
 Part of *Voices from Latin America*.

Sunday, December 2 at 3 PM | Stern/Perelman
The MET Orchestra
 Fabio Luisi, Principal Conductor
 David Chan, Violin
 Yefim Bronfman, Piano

Sunday, December 2 at 7:30 PM | Zankel
Ensemble ACJW
 Harry Bicket, Conductor
 Lucy Crowe, Soprano
 Stuart Brezinski, Oboe
 Michelle Ross, Violin

Tuesday, December 4 at 8 PM | Stern/Perelman
Egberto Gismonti, Piano
Danilo Pérez, Piano
Gonzalo Rubalcaba, Piano
Chucho Valdés, Piano
 Part of *Voices from Latin America*.

Wednesday, December 5 at 8:30 PM | Zankel
Arnaldo Antunes
Orquestra Imperial
 Part of *Voices from Latin America*.

Thursday, December 6 at 8 PM | Stern/Perelman
Piotr Anderszewski, Piano

Friday, December 7 at 8 PM | Stern/Perelman
Venezuelan Brass Ensemble
 Thomas Clamor, Conductor
 Part of *Voices from Latin America*.



Gustavo Dudamel and the Simón Bolívar Symphony Orchestra of Venezuela | December 11

Saturday, December 8 at 1 PM | Zankel

Discovery Day: El Sistema

Dr. Leon Botstein, Keynote Speaker
Dr. José Antonio Abreu, Panelist
Gustavo Dudamel, Panelist
Jeremy Geffen, Moderator
Part of *Voices from Latin America*.

Saturday, December 8 at 7:30 PM | Zankel

Música nueva

Members of the Simón Bolívar Symphony Orchestra of Venezuela
Joshua Dos Santos, Conductor
Danilo Pérez, Piano
Gonzalo Rubalcaba, Piano
Part of *Voices from Latin America*.

Sunday, December 9 at 2 PM | Stern/Perelman

Family Concert:

Simón Bolívar Symphony Orchestra of Venezuela

Joshua Dos Santos, Conductor
Manuel Juardo, Conductor
Jesús Parra, Conductor
Eduardo Salazar, Conductor
Claudette Sierra, Host
Part of *Voices from Latin America*.

Monday, December 10 at 8 PM | Stern/Perelman

Simón Bolívar Symphony Orchestra of Venezuela

Gustavo Dudamel, Music Director and Conductor
Part of *Voices from Latin America*.

Tuesday, December 11 at 8 PM | Stern/Perelman

Simón Bolívar Symphony Orchestra of Venezuela

Gustavo Dudamel, Music Director and Conductor
Idwer Álvarez, Tenor
Gaspar Colón, Baritone
Westminster Symphonic Choir
Joe Miller, Conductor
Part of *Voices from Latin America*.

Friday, December 14 at 8 PM | Stern/Perelman

The New York Pops

Steven Reineke, Music Director and Conductor
Pink Martini

Saturday, December 15 at 8 PM | Stern/Perelman

The New York Pops

Steven Reineke, Music Director and Conductor
Pink Martini

Monday, December 24 at 7 PM | Stern/Perelman

New York String Orchestra

Jaime Laredo, Conductor
Jonathan Biss, Piano

Friday, December 28 at 8 PM | Stern/Perelman

New York String Orchestra

Jaime Laredo, Conductor
Cicely Parnas, Cello
Anthony McGill, Clarinet

January

Monday, January 7 at 8 PM | Stern/Perelman

Emerson String Quartet

Yefim Bronfman, Piano

Paul Neubauer, Viola
Colin Carr, Cello

Tuesday, January 15 at 5:30 PM | Weill

The Song Continues: Spotlight Recital

Karen Vuong, Soprano
Ken Noda, Piano

Tuesday, January 15 at 7:30 PM | Weill

The Song Continues:

Marilyn Horne Master Class

Lisa Williamson, Soprano
Jazimina MacNeil, Mezzo-Soprano
Naomi O'Connell, Mezzo-Soprano
J. Warren Mitchell, Tenor
Emily Siar, Soprano (Alternate)
Ronny Michael-Greenberg, Piano
Dylan Perez, Piano
Saule Tlenchiyeva, Piano
Peter Walsh, Piano

Wednesday, January 16 at 7:30 PM | Zankel

The Song Continues:

Jessye Norman Master Class

Marina Harris, Soprano
Jessica Strong, Soprano
Hyo Na Kim, Mezzo-Soprano
Nathaniel Olson, Baritone
Julia Bullock, Soprano (Alternate)
Ronny Michael-Greenberg, Piano
Dylan Perez, Piano
Saule Tlenchiyeva, Piano
Peter Walsh, Piano

Thursday, January 17 at 5:30 PM | Weill

The Song Continues: Spotlight Recital

Sidney Outlaw, Baritone
Warren Jones, Piano

Thursday, January 17 at 7:30 PM | Weill

The Song Continues:

Dalton Baldwin Master Class

Pureum Jo, Soprano
Meghan Lindsay, Soprano
Samantha Malk, Mezzo-Soprano
Brenton Ryan, Tenor
Emily Siar, Soprano (Alternate)
Ronny Michael-Greenberg, Piano
Dylan Perez, Piano
Saule Tlenchiyeva, Piano
Peter Walsh, Piano



Emerson String Quartet and Yefim Bronfman | January 7



Yannick Nézet-Séguin and The Philadelphia Orchestra
January 17



Jennifer Zetlan with George Manahan and
the American Composers Orchestra | January 18



Bradley Moore, Susan Graham, and Renée Fleming | January 27

**Thursday, January 17 at 8 PM | Stern/Perelman
The Philadelphia Orchestra**

Yannick Nézet-Séguin, Music Director and Conductor
Leonidas Kavakos, Violin

**Friday, January 18 at 7:30 PM | Zankel
American Composers Orchestra**

George Manahan, Music Director and Conductor
Kate Soper, Soprano
Jennifer Zetlan, Soprano

**Saturday, January 19 at 7:30 PM | Zankel
Marilyn Horne Song Celebration**

Simone Osborne, Soprano
Jennifer Johnson Cano, Mezzo-Soprano
Timothy Fallon, Tenor
Kelly Markgraf, Baritone
Paul Neubauer, Viola
Christopher Cano, Piano
Warren Jones, Piano
Keun-A Lee, Piano
Carol Wong, Piano
with Special Guests
Piotr Beczala, Tenor
Carrie-Ann Matheson, Piano

**Sunday, January 20 at 2 PM | Stern/Perelman
Carnegie Hall Family Concert:
Mambo Mania**

Eguie Castrillo, Timbales and Leader
Dancers from the Masacote Dance Company
Claudette Sierra, Host
With Special Guest
Gilberto Santa Rosa, Vocalist
Featuring
Victor M. Mairena and Jesus Pagan, Vocals
Jorge Castro and Daryl Lowery, Alto Saxophone
Carlos Averhoff Jr. and Janusz Kowalski, Tenor Saxophone
Tim Mayer, Baritone Saxophone
Peter Nater, Humberto Ramirez, Manuel Ruiz, and John Walsh,
Trumpet
Sam Burtis, Jose A. Cruz, and Reynaldo Jorge, Trombone
Arturo Ortiz, Piano
Oskar Cartaya, Bass
Marcos Lopez, Congas
Marcos Torres, Bongos

**Monday, January 21 at 7:30 PM | Zankel
Nicolas Hodges, Piano**

Perspectives: Renée Fleming

Soprano Renée Fleming led a four-event series that presented her as singer, colleague, and curator. In January, Fleming shared the stage with mezzo-soprano Susan Graham in a program celebrating their musical and personal friendship. In March, a semi-staged performance of André Previn's *A Streetcar Named Desire* saw Fleming reprise Blanche DuBois, a role she originated when the opera premiered in 1998. Fleming said, "To have the opportunity to sing an opera in arguably the greatest acoustic in the world [was] a special thrill."

In April, Fleming added a new work to her repertoire when she gave the world premiere of Anders Hillborg's *The Strand Settings*, a song cycle co-commissioned by Carnegie Hall and the New York Philharmonic. Alan Gilbert conducted the orchestra. Fleming served as singer, historian, and host in May's *Vienna: Window to Modernity*, a tribute to the time and place where the European musical tradition, under the influence of literary and visual arts, gave way to the 20th century.

**Wednesday, January 23 at 7:30 PM | Zankel
Dorothea Röschmann, Soprano
Malcolm Martineau, Piano**

**Thursday, January 24 at 8 PM | Stern/Perelman
Radu Lupu, Piano**

**Saturday, January 26 at 10 PM | Zankel
Loudon Wainwright III**

**Sunday, January 27 at 8 PM | Stern/Perelman
Renée Fleming, Soprano
Susan Graham, Mezzo-Soprano
Bradley Moore, Piano**

**Wednesday, January 30 at 8 PM | Stern/Perelman
West-Eastern Divan Orchestra**
Daniel Barenboim, Music Director and Conductor

**Thursday, January 31 at 8 PM | Stern/Perelman
West-Eastern Divan Orchestra**
Daniel Barenboim, Music Director and Conductor

**Saturday, February 2 at 8 PM | Stern/Perelman
West-Eastern Divan Orchestra**
Daniel Barenboim, Music Director and Conductor

February

**Sunday, February 3 at 2 PM | Stern/Perelman
West-Eastern Divan Orchestra**

Daniel Barenboim, Music Director and Conductor
Diana Damrau, Soprano | Kate Lindsey, Mezzo-Soprano
Piotr Beczala, Tenor | René Pape, Bass
Westminster Symphonic Choir | Joe Miller, Conductor

**Monday, February 4 at 6 PM | Zankel
Making Music: Osvaldo Golijov**

Commentary by Osvaldo Golijov
St. Lawrence String Quartet
Jessica Rivera, Soprano
Biella da Costa, Mezzo-Soprano
Todd Palmer, Clarinet
The Zankel Band
Jeremy Geffen, Moderator

**Tuesday, February 5 at 8 PM | Stern/Perelman
Daniil Trifonov, Piano**

**Wednesday, February 6 at 7:30 PM | Zankel
Venice Baroque Orchestra**
Andrea Marcon, Director

**Thursday, February 7 at 8 PM | Stern/Perelman
Orchestra of St. Luke's**
Pablo Heras-Casado, Principal Conductor
Christian Zacharias, Piano

**Friday, February 8 at 7:30 PM | Weill
Susanna Phillips, Soprano
Myra Huang, Piano**

**Tuesday, February 12 at 7:30 PM | Zankel
Brentano String Quartet**

**Tuesday, February 12 at 7:30 PM | Weill
Kristian Bezuidenhout, Harpsichord**

**Tuesday, February 12 at 8 PM | Stern Perelman
Ensembles of Afghanistan
National Institute of Music**
Ahmad Sarmast, Founder and Director
Mikhail Simonyan, Violin
Afghan Youth Orchestra | William Harvey, Conductor
Chamber Wind Ensemble | James Herzog, Conductor
Sitar and Sarod Ensemble | Ustad Irfan Khan, Leader
Young Afghan Traditional Ensemble
Ustad Muhammed Murad Sarkhosh, Leader
Members of the Scarsdale High School Orchestra
Presented by Ministry of Education of Afghanistan



Daniel Barenboim and the West-Eastern Divan Orchestra
February 3

Richard Termine

Sharing Musical Cultures at Carnegie Hall

Using music as a bridge to join all kinds of people is among Carnegie Hall's primary missions. The complete symphonies of Beethoven, performed in four late-January and early-February concerts by the West-Eastern Divan Orchestra conducted by Daniel Barenboim, were proof that music has the power to reconcile. The orchestra, comprising Israeli, Palestinian, and other Arab musicians, as well as Spaniards, was founded by Barenboim and the late esteemed scholar Edward Said.

The Simón Bolívar Symphony Orchestra of Venezuela, conducted by its music director, Gustavo Dudamel, proved in two December concerts that music has a transforming ability to help young people overcome poverty and conquer despair. The orchestra consists of young professional players who graduated from El Sistema, Venezuela's famous national system of music education, which reaches many young people living below the poverty line.

War-torn Afghanistan would hardly seem a place for the musical spirit to thrive in young people, but a February performance by the Afghan Youth Orchestra gloriously showed that music can help people overcome huge barriers.

**Wednesday, February 13 at 8 PM | Stern/Perelman
Royal Concertgebouw Orchestra**
Mariss Jansons, Chief Conductor
Leonidas Kavakos, Violin

**Thursday, February 14 at 8 PM | Stern/Perelman
Royal Concertgebouw Orchestra**
Mariss Jansons, Chief Conductor

**Friday, February 15 at 7:30 PM | Weill
Miró Quartet**

**Friday, February 15 at 9:30 PM | Zankel
3 Cohens Sextet: Anat, Avishai, and Yuval**
Anat Cohen, Clarinet and Tenor Saxophone
Avishai Cohen, Trumpet
Yuval Cohen, Soprano Saxophone
Aaron Goldberg, Piano
Omer Avital, Bass
Jonathan Blake, Drums

**Saturday, February 16 at 7:30 PM | Stern/Perelman
Dianne Reeves and Friends**
Dianne Reeves
With Special Guests
Esperanza Spalding | George Duke | Lalah Hathaway
Nadia Washington | Terri Lyne Carrington

**Saturday, February 16 at 10 PM | Zankel
Alash**

**Monday, February 18 at 7:30 PM | Zankel
The King's Singers**

**Monday, February 18 at 7:30 PM | Weill
Ensemble ACJW**

**Wednesday, February 20 at 7:30 PM | Zankel
Standard Time with Michael Feinstein**
Michael Feinstein, Artistic Director
With Special Guests
Tom Wopat
Natalie Douglas
Tex Arnold, Piano
David Finck, Bass
David Ratajczak, Drums
Mark Hartman, Piano

**Friday, February 22 at 8 PM | Stern/Perelman
The Philadelphia Orchestra**
Yannick Nézet-Séguin, Music Director
Jean-Yves Thibaudet, Piano

**Saturday, February 23 at 1 PM | Weill
Discovery Day: The Rite of Spring**

**Saturday, February 23 at 8 PM | Stern/Perelman
Magdalena Kožená, Mezzo-Soprano
Yefim Bronfman, Piano**

**Sunday, February 24 at 2 PM | Stern/Perelman
The English Concert**
Harry Bicket, Conductor
David Daniels, Countertenor
Brenda Rae, Soprano
Joëlle Harvey, Soprano
Patricia Bardon, Mezzo-Soprano
Luca Pisaroni, Bass-Baritone
David Kravitz, Baritone



Dianne Reeves, Nadia Washington, and Esperanza Spalding
February 16

Jack Vartogian



David Daniels and Patricia Bardon with The English Concert | February 24

Steve Sherman

March



Franz Welser-Möst and the Vienna Philharmonic Orchestra | March 1

Chris Lee

Friday, March 1 at 8 PM | Stern/Perelman
Vienna Philharmonic Orchestra
 Franz Welser-Möst, Conductor
 Herbert Lippert, Tenor

Saturday, March 2 at 1 PM | Zankel
Family Concert: The Declassified
 Carol McGonnell, Clarinet
 Shelley Monroe Huang, Bassoon
 Brandon Ridenour, Trumpet
 Anna Elashvili, Violin
 Nathan Schram, Viola
 Caitlin Sullivan, Cello
 Marina Radiushina, Piano
 John Ostrowski, Percussion
 Charlotte Blake Alston, Host

Saturday, March 2 at 8 PM | Stern/Perelman
Vienna Philharmonic Orchestra
 Franz Welser-Möst, Conductor

Sunday, March 3 at 2 PM | Stern/Perelman
Vienna Philharmonic Orchestra
 Franz Welser-Möst, Conductor
 Frank Peter Zimmermann, Violin

Monday, March 4 at 8 PM | Stern/Perelman
Stephen Hough, Piano

Tuesday, March 5 at 7:30 PM | Weill
Studio de musique ancienne de Montréal
 Christopher Jackson, Conductor



Julien Bourdes

Ensemble Matheus | March 6

Oswaldo Golijov, the Richard and Barbara Debs Composer's Chair

Few composers have introduced classical composition into the broader fabric of modern culture as skillfully as Oswaldo Golijov, who held the 2012–2013 Richard and Barbara Debs Composer's Chair. Golijov's music, influenced by Latin American, Hebraic, Sephardic, and classical traditions, has made him one of the most revered living composers. In a special Making Music event, the Argentine composer provided insightful commentary, and the St. Lawrence String Quartet premiered his *Qohelet* (a Carnegie Hall and Stanford Lively Arts co-commission). The program also included Golijov's *Ayre*, a Carnegie Hall commission that premiered in Zankel Hall in 2004.

A March performance of *La Pasión según San Marcos*, a contemporary telling of the last days of Christ, was a Weill Music Institute Creative Learning Project and the centerpiece of Golijov's residency. Highly dramatic, Golijov's setting of texts in Spanish, Latin, and Aramaic pulsed with Latin American-flavored colors and rhythms. One hundred twenty New York City high school students joined forces with the Schola Cantorum de Venezuela Choir, professional soloists, and the Orquesta la Pasión conducted by Robert Spano.

Wednesday, March 6 at 7:30 PM | Zankel
Ensemble Matheus
 Jean-Christophe Spinosi, Director and Violin
 Veronica Cangemi, Soprano
 Laurence Paugam, Violin
 Claire-Lise Démettre, Cello
 Jérôme Pernoo, Cello

Friday, March 8 at 7:30 PM | Weill
Alek Shrader, Tenor
Keun-A Lee, Piano

Friday, March 8 at 8 PM | Stern/Perelman
The New York Pops
 Steven Reineke, Music Director and Conductor
 Starring Megan Hilty and featuring Ryan Silverman

Friday, March 8 at 8:30 PM | Zankel
Altan
 Mairéad Ní Mhaonaigh, Lead Vocals and Fiddle
 Ciarán Tourish, Fiddle, Tin Whistle, and Vocals
 Dermot Byrne, Button Accordion and Melodeon
 Dáithí Sproule, Guitar and Vocals
 Ciarán Curran, Bouzouki and Bouzouki Guitar

Sunday, March 10 at 3 PM | Stern/Perelman
**La Pasión según San Marcos:
A Creative Learning Project**
 Robert Spano, Conductor
 Jessica Rivera, Soprano
 Luciana Souza, Alto
 Reynaldo González-Fernández, Voice and Dance
 Deraldo Ferreira, Capoeira and Berimbau
 Orquesta La Pasión
 Mikael Ringquist, Leader | Gonzalo Grau, Leader
 Members of Schola Cantorum de Venezuela
 María Guinand, Chorus Director
 Forest Hills High School Concert Choir
 Frank Sinatra School of the Arts Concert Choir
 Songs of Solomon
 David Rosenmeyer, Music Supervisor

Monday, March 11 at 8 PM | Stern/Perelman
Stephanie Blythe, Mezzo-Soprano
Warren Jones, Piano

Tuesday, March 12 at 7:30 PM | Zankel
Jonathan Biss, Piano

Thursday, March 14 at 7 PM | Stern/Perelman
A Streetcar Named Desire

Renée Fleming, Soprano (Blanche DuBois)
Teddy Tahu Rhodes, Baritone (Stanley Kowalski)
Susanna Phillips, Soprano (Stella Kowalski)
Anthony Dean Griffey, Tenor (Harold Mitchell, "Mitch")
Victoria Livengood, Mezzo-Soprano (Eunice Hubbell)
Dominic Armstrong, Tenor (Steve Hubbell)
Andrew Bidlack, Tenor (A Young Collector)
Georga Osborne (Nurse)
Bill Nabel (Doctor)
Brad Heikes, Brendan Irving, Kevin Reed, Patrick Stoffer,
Brett Zubler (Men of New Orleans)
Orchestra of St. Luke's
Patrick Summers, Conductor
Brad Dalton, Director
Alan Adelman, Lighting Designer
Johann Stegmeir, Costume Designer

Thursday, March 14 at 7:30 PM
Takács Quartet Master Class

Master Class Leaders:
Takács Quartet
Performers:
Attacca Quartet
Linden String Quartet
Spruce Quartet

Friday, March 15 at 7:30 PM | Weill
String Quartet Masterworks

Attacca Quartet
Linden String Quartet
Spruce Quartet

Sunday, March 17 at 7:30 PM | Zankel
Artemis Quartet

Monday, March 18 at 7:30 PM | Zankel
John Williams, Guitar
John Etheridge, Guitar

Monday, March 18 at 7:30 PM | Weill
Sol Gabetta, Cello
Alessio Bax, Piano



Sol Gabetta and Alessio Bax | March 18

Nan Melville



Brett Zubler, Teddy Tahu Rhodes, Dominic Armstrong, Kevin Reed, Patrick Stoffer, Anthony Dean Griffey, and Renée Fleming with Patrick Summers and the Orchestra of St. Luke's in *A Streetcar Named Desire* | March 14

Richard Termine

Tuesday, March 19 at 6 PM | Zankel

Ensemble ACJW
Robert Spano, Conductor
Juho Pohjonen, Piano
Laura Weiner, Horn
Ian Sullivan, Xylorimba
Jared Soldiviero, Glockenspiel

Friday, March 22 at 7:30 PM | Stern/Perelman
Jeremy Denk, Piano

Friday, March 22 at 7:30 PM | Weill
Škampa Quartet

Saturday, March 23 at 9 PM | Zankel
Jenny Scheinman Trio
Featuring Bill Frisell and Brian Blade

Jenny Scheinman, Violin and Vocals
Bill Frisell, Guitar
Brian Blade, Drums

Wednesday, March 27 at 8 PM | Stern/Perelman
Dmitri Hvorostovsky, Baritone
Ivari Ilja, Piano

Thursday, March 28 at 7:30 PM | Zankel
Lawrence Brownlee, Tenor
Martin Katz, Piano

Thursday, March 28 at 8 PM | Stern/Perelman
Orchestra of St. Luke's
Iván Fischer, Conductor
Dominique Labelle, Soprano
Barbara Kozelj, Mezzo-Soprano
John Tessier, Tenor (Evangelist)
Hanno Müller-Brachmann, Bass-Baritone (Christus)
Musica Sacra | Kent Tritle, Music Director



Jenny Scheinman, Brian Blade, and Bill Frisell | March 23

Jack Vartoogian



Martin Katz and Lawrence Brownlee | March 28

Nan Melville

April

Steve J. Sherman



Daniele Gatti and the Boston Symphony Orchestra | April 4

Tuesday, April 2 at 7:30 PM | Zankel
Jonathan Biss, Piano
Elias String Quartet

Wednesday, April 3 at 7:30 PM | Zankel
Standard Time with Michael Feinstein
Michael Feinstein, Artistic Director
With Special Guest
Peter Cincotti

Wednesday, April 3 at 8 PM | Stern/Perelman
Boston Symphony Orchestra
Rafael Frühbeck de Burgos, Conductor
Garrick Ohlsson, Piano

Thursday, April 4 at 8 PM | Stern/Perelman
Boston Symphony Orchestra
Daniele Gatti, Conductor
Anne Sofie von Otter, Mezzo-Soprano
Women of the Tanglewood Festival Chorus
John Oliver, Conductor
Boys of the PALS Children's Chorus
Andy Icochea Icochea, Conductor

Friday, April 5 at 7:30 PM | Zankel
American Composers Orchestra
George Manahan, Music Director and Conductor
Dane Lam, Remote Conductor
Gildas Quartet, Remote Musicians
Sonora Trio
Simon Tarr, Live Visuals



Jennifer Taylor

Natalia Katyukova and Paul Appleby | April 5

Friday, April 5 at 7:30 PM | Weill
Paul Appleby, Tenor
Natalia Katyukova, Piano

Friday, April 5 at 8 PM | Stern/Perelman
Boston Symphony Orchestra
Daniele Gatti, Conductor
Michelle DeYoung, Mezzo-Soprano

Saturday, April 6 at 7 PM | Stern/Perelman
Elina Garanča, Mezzo-Soprano
Kevin Murphy, Piano

Saturday, April 6 at 9 PM | Zankel
Alarm Will Sound
Alan Pierson, Artistic Director and Conductor
Rachel Calloway, Mezzo-Soprano

Tuesday, April 9 at 7:30 PM | Zankel
Isabel Leonard, Mezzo-Soprano
Vlad Iftinca, Piano

Wednesday, April 10 at 7:30 PM | Zankel
Jonathan Biss, Piano
Elias String Quartet
Carol McGonnell, Clarinet
Eric Reed, Horn
Brad Balliett, Bassoon

Friday, April 12 at 7:30 PM | Weill
Jasper String Quartet

Friday, April 12 at 8 PM | Stern/Perelman
The New York Pops
Steven Reineke, Music Director and Conductor
Jeremy Jordan, Guest Artist
Norm Lewis, Guest Artist
Julia Murney, Guest Artist
Jennifer Laura Thompson, Guest Artist
Essential Voices USA
Judith Clurman, Music Director and Conductor

Saturday, April 13 at 10 PM | Zankel
The Flatlanders

Tuesday, April 16 at 7:30 PM | Weill
Trio Sonnerie

Wednesday, April 17 at 7:30 PM | Weill
Ensemble ACJW

Wednesday, April 17 at 8 PM | Stern/Perelman
Staatskapelle Dresden
Christian Thielemann, Principal Conductor
Lisa Batiashvili, Violin

Thursday, April 18 at 8 PM | Stern/Perelman
Mitsuko Uchida, Piano



Pete Czechia

Kevin Murphy and Elina Garanča | April 6



Richard Termino

Jonathan Biss and Elias String Quartet | April 10



Julien Jourdes

Lisa Batiashvili with Christian Thielemann and Staatskapelle Dresden | April 17



Maurizio Pollini | April 21

Jennifer Taylor

Friday, April 19 at 8 PM | Stern/Perelman
Staatskapelle Dresden
 Christian Thielemann, Principal Conductor

Saturday, April 20 at 8 PM | Stern/Perelman
National High School Choral Festival
 Orchestra of St. Luke's
 John Nelson, Conductor
 Nicole Cabell, Soprano
 Jamie Barton, Mezzo-Soprano
 Russell Thomas, Tenor
 John Relyea, Bass-Baritone
 Kent Tritle, Chorus Director
 Blue Valley Northwest High School Chorale
 Arlington High Chamber Singers
 North Jersey Homeschool Association Chorale

Sunday, April 21 at 1 PM | Zankel
Family Concert: Polygraph Lounge
 Mark Stewart
 Rob Schwimmer

Sunday, April 21 at 3 PM | Stern/Perelman
Maurizio Pollini, Piano

Monday, April 22 at 7:30 PM | Zankel
Nathan Gunn, Baritone
Julie Gunn, Piano
Pacifica Quartet

Wednesday, April 24 at 7:30 PM | Zankel
American Soundscapes
 Featuring young artists coached by John Adams and David Robertson

Thursday, April 25 at 7:30 PM | Zankel
American Soundscapes
 Featuring young artists coached by John Adams and David Robertson

Friday, April 26 at 7:30 PM | Zankel
Till Fellner, Piano

Friday, April 26 at 8 PM | Stern/Perelman
New York Philharmonic
 Alan Gilbert, Music Director and Conductor
 Renée Fleming, Soprano

Saturday, April 27 at 9:30 PM | Zankel
Vijay Iyer: Solo, Trio, Sextet
 Vijay Iyer, Piano
 Stephan Crump, Bass
 Tyshawn Sorey, Drums
 Steve Lehman, Alto Saxophone
 Mark Shim, Tenor Saxophone
 Graham Haynes, Cornet and Flugelhorn

Wednesday, May 1 at 8 PM | Stern/Perelman
Richard Goode, Piano

Friday, May 3 at 7 PM | Stern/Perelman
Evgeny Kissin, Piano

Friday, May 3 at 9 PM | Zankel
Kronos Quartet
 With special guest David Krakauer, Clarinet

Saturday, May 4 at 7:30 PM | Stern/Perelman
Vienna: Window to Modernity
 Renée Fleming, Soprano and Host
 Jeremy Denk, Piano
 Emerson String Quartet
 Paul Neubauer, Viola
 Colin Carr, Cello

Sunday, May 5 at 1 PM | Zankel
Family Concert: The Wiyos
 Sauerkraut Seth Travins, Upright Bass and Harmony Vocals
 Michael Farkas, Lead Vocals, Harmonica, Kazoo and Washboard
 Teddy Webber, Table/Lap Steel Guitar, Acoustic Guitar and Vocals
 Kenny Siegal, Piano
 Charlotte Blake Alston, Host

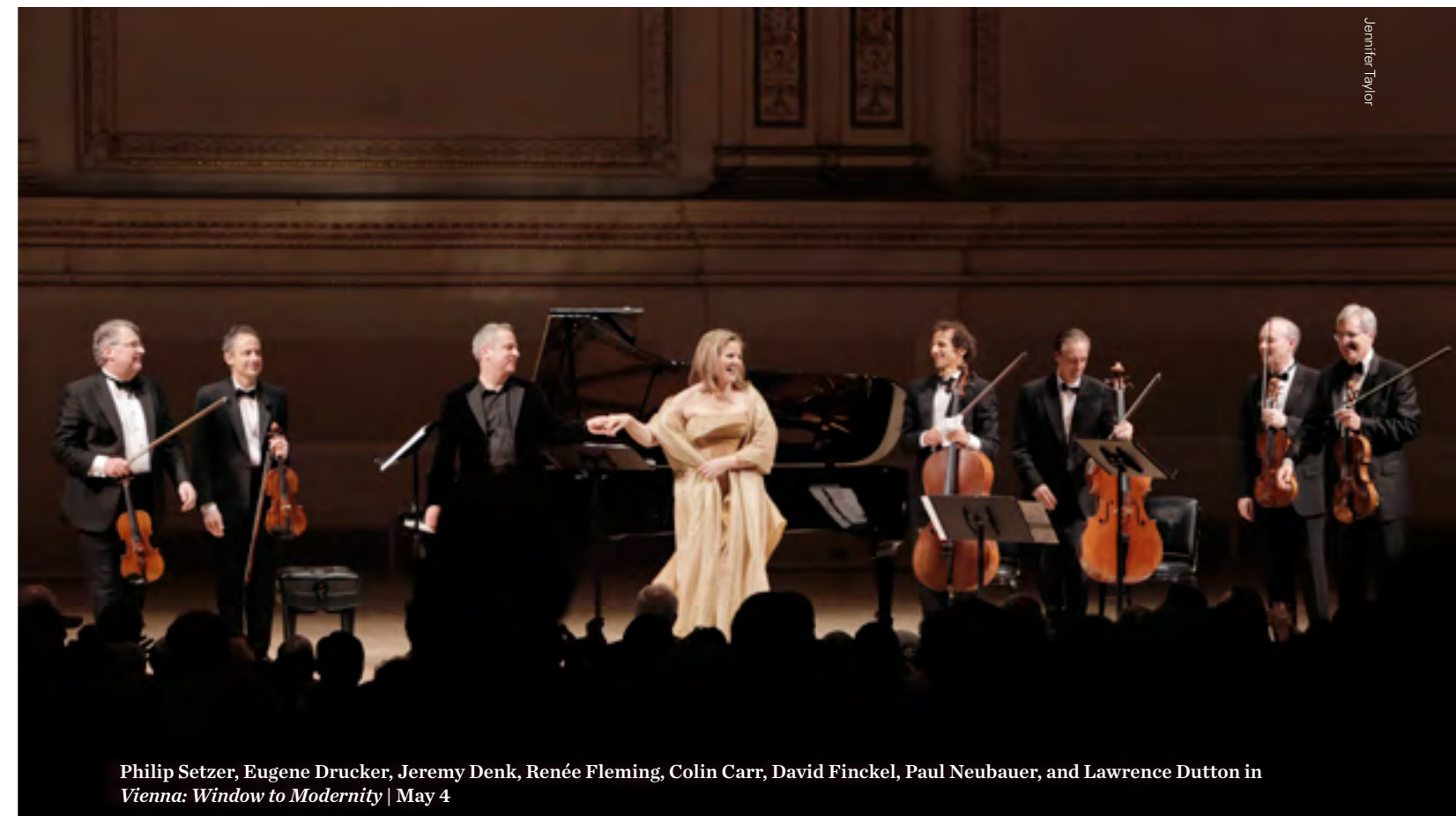
Sunday, May 5 at 3 PM | Stern/Perelman
Maurizio Pollini, Piano

May/June



Kronos Quartet | May 3

Stephanie Berger



Philip Setzer, Eugene Drucker, Jeremy Denk, Renée Fleming, Colin Carr, David Finckel, Paul Neubauer, and Lawrence Dutton in *Vienna: Window to Modernity* | May 4

Jennifer Taylor



Yuja Wang | May 16

Ian Douglas

Monday, May 6 at 7:30 PM | Stern/Perelman

Spring For Music:
Baltimore Symphony Orchestra
 Marin Alsop, Music Director
 Time for Three

Tuesday, May 7 at 7:30 PM | Stern/Perelman

Spring For Music: Albany Symphony
 David Alan Miller, Music Director
 Kevin Cole, Piano

Wednesday, May 8 at 7:30 PM | Stern/Perelman

Spring For Music: Buffalo Philharmonic Orchestra
 JoAnn Falletta, Music Director

Thursday, May 9 at 7:30 PM | Stern/Perelman

Spring For Music: Detroit Symphony Orchestra
 Leonard Slatkin, Music Director
 Storm Large, Soprano
 Jorge Garza, Tenor
 Carl Moe, Tenor
 Anton Belov, Baritone
 Richard Zeller, Baritone

Friday, May 10 at 7:30 PM | Stern/Perelman

Spring For Music: Detroit Symphony Orchestra
 Leonard Slatkin, Music Director
 UMS Choral Union Chamber Singers

Friday, May 10 at 7:30 PM | Weill

Ensemble ACJW

Saturday, May 11 at 7:30 PM | Stern/Perelman

Spring For Music: National Symphony Orchestra
 Christoph Eschenbach, Music Director
 David Aaron Carpenter, Viola

Thursday, May 16 at 8 PM | Stern/Perelman

Yuja Wang, Piano

Friday, May 17 at 6 PM | Zankel

Crash Ensemble
 Alan Pierson, Conductor
 Dawn Upshaw, Soprano
 Iarla Ó Lionáird, Voice

Friday, May 17 at 8 PM | Stern/Perelman

The Philadelphia Orchestra
 Sir Simon Rattle, Conductor
 Barbara Hannigan, Soprano

Sunday, May 19 at 3 PM | Stern/Perelman

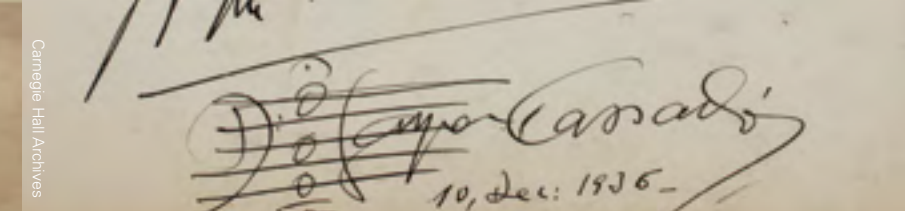
The MET Orchestra
 James Levine, Music Director and Conductor
 Evgeny Kissin, Piano

Saturday, June 1 at 8 PM | Stern/Perelman

Orchestra of St. Luke's
 Nicholas McGegan, Conductor
 Steven Isserlis, Cello



Carnegie Hall Archives



Carnegie Hall Archives

Digital Archives Project

Architect William B. Tuthill's original design drawing of Carnegie Hall was in peril. Over a century old, this drawing—one of only a handful in Tuthill's own hand—was starting to show signs of deterioration, suffering from the natural wear and tear that paper faces over the years. The good news: Rescue was on the way. As Carnegie Hall increasingly finds new ways to share its history and programmatic resources utilizing state-of-the-art technology, it has officially launched its Digital Archives Project, an ambitious, multi-year project started in July 2012 to conserve, repair, and digitize its print and audiovisual archive collection.

Carnegie Hall's archives contain more than 300,000 items documenting close to 50,000 performances and events that have taken place in its three concert halls. Items in the collection tell the story of the historic building's construction and alterations, as well as the notable artists and world figures who have stepped onto its stages. In addition to print materials, Carnegie Hall has extensive audiovisual treasures, including disks, tapes, and film reels that were imperiled by the ravages of time. For the first year of the project, over 35,000 print pages, including the Tuthill drawing, and more than 2,300 audiovisual items were preserved and digitized.

In 2013, online visitors were also able to directly sample Carnegie Hall's performance history database for the first time. This exhaustively researched resource contains records of thousands of musical and non-musical events that occurred in the public performance spaces of Carnegie Hall from its opening in 1891 to the present. Records spanning the period between 1891 and 1941 were made available first, with additional data to be released on a regular basis.

Technology continues to be a major resource for Carnegie Hall to better serve audiences in New York City and beyond. Live concerts from Carnegie Hall stages are regularly heard by listeners worldwide via the Carnegie Hall Live broadcast and digital series, produced with WQXR in collaboration with American Public Media. Through videos and content specially curated on carnegiehall.org, YouTube, and iTunes U, as well as connections made through social media, Carnegie Hall's reach extends well beyond its own four walls to foster a global community of music lovers.



Courtesy of Northeast Document Conservation Center



Courtesy of Northeast Document Conservation Center

Weill Music Institute

During the 2012–2013 season, the Weill Music Institute (WMI) continued its commitment to creating memorable musical experiences for a wide range of audiences and nurturing the next generation of musical artists and innovators. With its local, national, and international programs, WMI reached more than 350,000 people from all walks of life and of all ages.

New York City high school students had a unique opportunity to study and rehearse with a master composer and musicians when they participated in WMI's creative learning project focusing on Osvaldo Golijov's *La Pasión según San Marcos*. Throughout the year, students learned about the Latin American cultural elements that give *La Pasión* its unique flavor, exploring batá drumming from Cuba and capoeira dance from Brazil. The students sharpened their performance skills in regular sessions with conductor María Guinand, director of Schola Cantorum de Venezuela Choir, to whom the piece is dedicated. In November 2012, many of the students participated in a daylong workshop with Golijov and musicians from the Orquesta la Pasión. The project culminated on March 10, 2013, with a Carnegie Hall performance conducted by Robert Spano and featuring 120 New York City high school singers, members of the Schola Cantorum de Venezuela Choir, professional soloists, and the Orquesta la Pasión.

Link Up, the program that connects grade-school students with professional, community, and university orchestras, had a season of tremendous growth, reaching nearly 200,000 students nationwide, including 15,000 in New York City. Link Up also expanded beyond the US, working with partner orchestras in Canada, Spain, and Japan. WMI's Workshops and Master Classes offered students an opportunity to study with great masters like Marilyn Horne, Jessye Norman, the Takács Quartet, and others, as well as to perform at Carnegie Hall. In 2013, WMI launched the National Youth Orchestra of the United States of America, a free program that brought 120 of the country's finest young players ages 16–19 together with leading professional orchestral musicians for a two-week training residency that culminated in an international tour with conductor Valery Gergiev and violinist Joshua Bell.

WMI continued to bring great music to the community. More than 50 free concerts took place in each of the five New York City boroughs with great artists performing everything from classical music to rhythm and blues. A vast range of music, from the Simón Bolívar Symphony Orchestra of Venezuela to the jug band the Wiyos, was brought to families in affordable afternoon concerts at Carnegie Hall in the Family Concerts series.

To learn more about WMI, please visit carnegiehall.org/education.



The National Youth Orchestra of the United States of America at Royal Albert Hall, London | July 21

For Students and Teachers

Musical Explorers (Elementary School)

Musical Explorers: My City, My Song

December 10–14, 2012 | Zankel

Sid Solomon, Host
 Rolando de los Reyes, Vocalist
 Gustavo “Chacho” Schartz, Bass and Vocalist
 Edgar Pantoja, Keyboard and Vocalist
 Yusnier Sanchez, Harp
 Magda Giannikou, Vocalist
 Marcelo Woloski, Percussion
 Ignacio Hernandez, Guitar
 Petros Klampanis, Bass
 Joseph Jenks, Vocalist and Guitar
 Shane Schag, Piano
 Stan Pressner, Lighting Designer

April 12, 14–19, 2013 | Zankel

Sid Solomon, Host
 Nathaniel Stampley, Vocalist
 Falu Shah, Vocalist
 Gaurav Shah, Harmonium and Vocalist
 Mark Tewarson, Guitar
 Dave Sharma, Percussion
 Deep Singh, Tabla
 Zhou Yi, Pipa player
 Fang Tao, Vocalist
 Shane Schag, Piano
 Stan Pressner, Lighting Designer

Students build basic music skills in the classroom as they learn songs from different cultures and reflect on their own communities. They also interact with professional musicians featured in the program during culminating concerts each semester at Carnegie Hall.

Link Up (Elementary School)

May 21–24, 2013 | Stern/Perelman

The Orchestra Rocks

Orchestra of St. Luke’s
 Rossen Milanov, Conductor
 Thomas Cabaniss, Host
 Christian Figueroa, Vocalist
 Shanna Lesniak, Vocalist
 Mandy Gonzalez, Vocalist
 Black Fire Percussion
 Susan Fenichell, Director
 Rachel Buethe, Assistant Director
 Dan Scully, Video and Projection Designer
 Mary Louise Geiger, Lighting Designer
 Townsend Olcott, Production Stage Manager

Students in music classrooms sing, play the recorder, compose, and explore melodies from a range of colorful orchestral repertoire.

Partner Organizations

Acadiana Symphony Orchestra and Conservatory of Music (Louisiana)
 Albany Symphony Orchestra (Georgia)
 Arkansas Philharmonic Orchestra (Arkansas)
 Austin Symphony Orchestra (Texas)
 Buffalo Philharmonic Orchestra (New York)
 Carnegie Hall–Lewisburg, West Virginia (West Virginia)
 East Tennessee Regional Symphony (Tennessee)
 East Texas Symphony Orchestra (Texas)
 El Paso Symphony Orchestra (Texas)
 Eugene Symphony (Oregon)
 The Florida Orchestra (Florida)
 Fort Wayne Philharmonic (Indiana)
 Fort Worth Symphony Orchestra (Texas)
 Gulf Coast Symphony (Mississippi)
 Hartford Symphony Orchestra (Connecticut)
 Jacksonville Symphony Orchestra (Florida)
 Kansas City Symphony (Missouri)
 Kenai Peninsula Orchestra (Alaska)
 Kitchener-Waterloo Symphony (Ontario, Canada)
 Louisiana Philharmonic Orchestra (Louisiana)
 Maryland Symphony Orchestra (Maryland)
 Meridian Symphony Orchestra (Mississippi)
 Mississippi Arts Commission (Mississippi)
 Mississippi Symphony Orchestra (Mississippi)
 North Mississippi Symphony Orchestra (Mississippi)
 Northwest Florida Symphony Orchestra (Florida)
 Omaha Symphony (Nebraska)
 Orquesta Sinfónica del Principado de Asturias (Oviedo, Spain)
 Pacific Music Festival (Sapporo, Japan)
 Rhode Island Philharmonic Orchestra (Rhode Island)
 Rockford Symphony Orchestra (Illinois)
 Sacramento Philharmonic Orchestra (California)
 Seattle Symphony (Washington)
 Snohomish County Music Project (Washington)
 South Arkansas Symphony Orchestra (Arkansas)
 South Carolina Philharmonic (South Carolina)
 Spartanburg Philharmonic Orchestra (South Carolina)
 Spokane Symphony (Washington)
 St. Louis Symphony (Missouri)
 Symphony Orchestra Augusta (Georgia)
 The University of Southern Mississippi Symphony Orchestra (Mississippi)
 Vocal and Instrumental Teaching Artists Academy (California)
 West Michigan Symphony (Michigan)

Carnegie Hall provides free, high-quality curriculum and administrative resource materials to orchestras across the nation and around the world, helping them connect with schools in their communities. In this program, students explore musical concepts through select orchestral works and compositional activities while preparing to perform along with the orchestra in an interactive culminating concert.

Music Blueprint Model School (Elementary and Middle School)

Yearlong activities

PS/MS 161 Manhattan Pedro Albizu Campos
 This school partnership embraces the objectives of the New York City Department of Education’s Blueprint for Teaching and Learning in the Arts.



Musical Explorers | December 13

Stefan Cohen



Link Up Concert: Orquesta Sinfónica del Principado de Asturias in Spain
 May 16

Phil Bravo



Link Up | May 23

Chris Lee

Link Up in Spain

“We were not divided in the usual categories of performers and listeners,” said maestro Rossen Milanov about his first experience leading a Link Up concert. “But rather our listeners were here for exactly the same reason as the orchestra and me— to make music!” Link Up fosters the joy of participating in orchestral music for students in grades 3–5, by having them learn an instrument in the classroom and then perform with a professional orchestra from their seats at a concert. The program has enjoyed tremendous success throughout New York City and across the country, entering its 28th year during the 2012–2013 season.

Milanov has been closely associated with Link Up for the past four years, conducting the Orchestra of St. Luke’s in concerts at Carnegie Hall, and now plays an active role in the program’s growth beyond the Hall. Milanov remembers, “Being part of the creative team for Link Up has made me one of its most enthusiastic advocates. Becoming principal conductor of Spain’s Orquesta Sinfónica del Principado de Asturias in 2012 was a fantastic opportunity to tailor the Link Up program to the ambitious music education goals of my Spanish orchestra.”

He continues, “Link Up is extremely flexible because its components can be altered and modified to fit the national culture.” The curriculum was translated and adapted for Spanish students, and in May 2013, more than 2,000 of them participated in two Spanish Link Up concerts conducted by Milanov in Asturias.

Looking to the future, Milanov says, “The concept of Link Up is so universal—it relies on music being a participatory and unifying force. The program transforms the musical experience for the students, not only in terms of measurable knowledge, but also as a collective form of creativity that few other artistic experiences could provoke.”



La Pasión según San Marcos | March 10

Chris Lee

For Communities Throughout New York City

Neighborhood Concerts

The Weill Music Institute proudly carries on a 37-year-old tradition of bringing Carnegie Hall's musical excellence to the neighborhoods of New York City with more than 30 free performances in all five boroughs. Presented in partnership with local institutions, these concerts feature main stage artists as well as young emerging musicians performing classical, jazz, and world music. In 2012–2013, audiences also had a chance to sing their favorite Broadway show tunes at two participatory Community Sings that featured Leslie Stifelman, the musical and artistic director of *Chicago: The Musical*, and several Broadway singers and dancers.

Carnegie Kids

These free, 45-minute concerts, designed for children ages 3–6, stimulate children's imagination and inspire families to sing, dance, and joyously interact with the music and musicians. In every borough, talented bands and ensembles play a vast range of music from classical to indie pop, encouraging children to be inquisitive and playful and bring out the natural musician inside them.

Count Me In (Middle School)

Yearlong activities

Young singers in high-need neighborhoods are given the opportunity to build basic singing skills in preparation for auditions that can connect them to further musical opportunities. This year, Count Me In served 158 students and helped to connect 20 eighth-grade students in Brooklyn and the Bronx (87% of eligible students) to arts-focused high schools.

Creative Learning Project (High School)

March 10, 2013 | Stern/Perelman

La Pasión según San Marcos

Robert Spano, Conductor
Orquesta La Pasión
Mikael Ringquist, Leader
Gonzalo Grau, Leader
Jessica Rivera, Soprano
Luciana Souza, Vocalist
Reynaldo González-Fernández, Afro-Cuban Singer and Dancer
Deraldo Ferreira, Capoeirista and Berimbau
Members of Schola Cantorum de Venezuela
Maria Guinand, Chorus Director
David Rosenmeyer, Music Supervisor
Forest Hills High School
Frank Sinatra School of the Arts
Songs of Solomon

At the heart of Osvaldo Golijov's residency as Carnegie Hall's Richard and Barbara Debs Composer's Chair was this performance of his *La Pasión según San Marcos*, featuring members of the Venezuelan chorus to which the piece is dedicated, together with 120 high school singers from throughout New York City. Drawing on the sounds of Latin America with texts in Spanish, Latin, and Aramaic, the piece is evocative, wildly inventive, and entirely characteristic of Golijov's personal aesthetic.

Arts Achieve

(Elementary, Middle, and High School)

Yearlong activities

A five-year partnership between New York City's leading arts institutions, the New York City Department of Education, and its public schools, Arts Achieve is designed to improve student achievement in the arts through the development and implementation of balanced arts assessments that are aligned with high student content and academic achievement standards. Carnegie Hall is the lead music partner on this project.

Music Educators Workshop (Ensemble Directors)

The Music Educators Workshop is an annual gathering of school choral teachers and community choir directors. This season, the institute collaborated with Guest Faculty Dianne Berkun for two daylong workshops with the Brooklyn Youth Chorus on Ms. Berkun's innovative approach to building vocal capacity in young singers. In addition to these workshops, Institute fellows attended four concert events in Stern Auditorium / Perelman Stage, took part in community-building activities, were observed in their classrooms by colleagues, and collaborated on small group working sessions in support of improved student learning and performance.



Jack Vartanian

Neighborhood Concert with Magos Herrera at Abroms Art Center | November 18



Carnegie Kids: ClassNotes | October 20



Community Sing at John Jay College | February 3



Julien Jourdes

Family Concert: Intercultural Journeys East Meets West
November 10



Richard Termine

Family Concert: Simón Bolívar Symphony Orchestra
of Venezuela | December 9



Stephanie Berger

Family Concert: Mambo Mania | January 20

Family Concerts

Family Concerts bring a variety of music and culture to legendary Stern Auditorium / Perelman Stage and the more intimate, contemporary Zankel Hall. Families enjoy imaginative, captivating, and interactive musical experiences that create lasting memories they can share for a lifetime. Concerts are approximately one hour long and include pre-concert activities.

November 10, 2012 | Zankel **Intercultural Journeys East Meets West**

Ricardo Morales, Clarinetist
Hafez El Ali Kotain, Drums
Phyllis Chapell, Voice
Udi Bar-David, Cello
Jiebing Chen, Erhu
Charlotte Blake Alston, Host

December 9, 2012 | Stern/Perelman **Simón Bolívar Symphony Orchestra of Venezuela**

Joshua Dos Santos, Conductor
Manuel Juardo, Conductor
Jesús Parra, Conductor
Eduardo Salazar, Conductor
Claudette Sierra, Host

January 20, 2013 | Stern/Perelman **Mambo Mania**

Eguie Castrillo and his Orchestra
Dancers from the Masacote Dance Company
Claudette Sierra, Host
with Special Guest
Gilberto Santa Rosa, Vocalist

March 2, 2013 | Zankel **The Declassified**

Carol McGonnell, Clarinet
Shelley Monroe Huang, Bassoon
Brandon Ridenour, Trumpet
Anna Elashvili, Violin
Nathan Schram, Viola
Caitlin Sullivan, Cello
Marina Radiushina, Piano
John Ostrowski, Percussion
Charlotte Blake Alston, Host

April 21, 2013 | Zankel **Polygraph Lounge**

Mark Stewart
Rob Schwimmer

May 5, 2013 | Zankel **The Wiyos**

Sauerkraut Seth Travins, Upright Bass and Harmony Vocals
Michael Farkas, Lead Vocals, Harmonica, Kazoo and Washboard
Teddy Webber, Table / Lap Steel Guitar, Acoustic Guitar and Vocals
Kenny Siegal, Piano
Charlotte Blake Alston, Host

The Lullaby Project

Pregnancy and parenting are challenging life events. But giving birth or raising a child in stressful situations—such as homelessness, incarceration, or when parents are very young—can present seemingly insurmountable challenges. “I was really feeling discouraged because I felt like being pregnant was going to stop me from following my dreams and singing,” said teen mother Miriah Lee. As a participant in the Musical Connections Lullaby Project, Lee, an aspiring singer, was able to write and record a lullaby to her nine-month-old son Jaidin and pursue her musical dream.

The Lullaby Project is for pregnant women and women with small children. The projects took place at city hospitals, a correctional facility, and two city homeless shelters. Lee was pregnant and attending Jacobi Medical Center’s Link2Care program (a prenatal program for teen mothers) when she learned about the Lullaby Project. “Once I heard about the project, I was hands-on,” said Lee. “I was in love with the whole idea.” The project celebrates one of the most fundamental expressions of the mother-child bond, the lullaby.

In collaboration with Carnegie Hall composers and musicians, the young women in the program write personal lullabies, visit a recording studio, and produce a professional recording of their lullaby, which they can play to their baby. The Lullaby Project aims to help women and their partners examine their roles as parents, bond with their babies, and forge a positive support network.

Lee remembered, “It was an amazing opportunity, I loved it. I think it was good for me and Jaidin because we have a different type of connection now.”

Musical Connections

Serving the unique needs of people living with challenging circumstances, the Weill Music Institute harnesses the transformative power of music through concerts, workshops, and other long-term projects that inspire creativity as well as encourage lifelong learning and artistic growth. Through its Musical Connections program, the Weill Music Institute reaches patients in the healthcare system, and juveniles and adults in the justice system.

Carnegie Hall continually works with local agencies overseeing homeless shelters and senior centers to coordinate attendance and free access to concerts presented as part of Carnegie Hall’s popular Family Concerts, Neighborhood Concerts, and Carnegie Kids events.



Jennifer Taylor

Lullaby Project at Jacobi Medical Center | November 19



Chris Lee

Members of NYO-USA at Peter and Paul Fortress, St. Petersburg | July 19



Chris Lee

Joshua Bell with Valery Gergiev and NYO-USA performing for the BBC Proms | July 21



Chris Lee

NYO-USA rehearsal at Purchase College, SUNY | July 9

NYO USA

“NYO-USA is about learning what it is really like to be in an orchestra,” said bassoonist Jordan Brokken. “The experience topped anything I’ve done before.” Brokken played in the inaugural season of WMI’s National Youth Orchestra of the United States of America (NYO-USA). After online auditions, the free program brought together 120 young musicians from 42 states and diverse backgrounds for an intensive two-week training session with principal players from major American orchestras at Purchase College, SUNY. Horn player Leah Meyer was amazed by “not just the baseline level of playing, but the leaps and bounds everyone is ready and willing to make to bring ourselves together as an orchestra.”

And an orchestra they did become. “I’ve never played in an ensemble of this caliber in my life,” said 17-year-old violinist Julia Popham. “In fact, I didn’t know I could ever be part of something this beautiful-sounding ... I know this experience is opening my eyes to the possibilities of what music can be.”

NYO-USA embarked on an international concert tour with maestro Valery Gergiev and violinist Joshua Bell, with stops at the Kennedy Center for the Performing Arts in Washington, DC; the Great Hall of the Moscow Conservatory and Mariinsky II in St. Petersburg, Russia; and the Royal Albert Hall in London as part of the BBC Proms festival. The Proms concert was recorded and broadcast on BBC radio and television.

The Guardian wrote of the concert, “The whole ensemble played with electric commitment.” Nikolette LaBonte, a horn player, recalled, “I know that every single member of the inaugural season of NYO-USA will be wildly successful in their own right. Whether they pursue music or something equally as wonderful ... the future of the nation, in my opinion, could not look brighter.”

For Young Musicians

National Youth Orchestra of the United States of America (Ages 16–19)

Each summer, Carnegie Hall’s Weill Music Institute brings together 120 of the brightest young players from across the country to form the National Youth Orchestra of the United States of America (NYO-USA). Following a two-week training residency with leading professional orchestra musicians, these remarkable teenagers embark on a tour to some of the great music capitals of the world and serve as dynamic musical ambassadors.



Stefan Cohen

Takács Quartet Master Class | March 14

Workshops and Master Classes (Ages 18–35)

Designed to meet the artistic and professional needs of musicians on the rise, these opportunities provide valuable access to world-class artists who frequent the stages of Carnegie Hall. Up-and-coming performers receive coaching and professional mentoring from celebrated faculty, plus performance opportunities as part of Carnegie Hall’s Now Arriving concert series and in public master classes on the concert hall stages. Select sessions of workshops and master classes are recorded to be shared more broadly on Carnegie Hall’s Digital Library

October 23, 2012

Emmanuel Pahud Master Class: Sonatas for Flute and Piano

For Flute and Piano Duos

One of today’s most celebrated and wide-ranging artists, Emmanuel Pahud led a master class devoted to sonatas for flute and piano.

January 14–19, 2013

Marilyn Horne with Jessye Norman and Dalton Baldwin: The Song Continues

For Singers

Marilyn Horne was joined by soprano Jessye Norman and collaborative pianist Dalton Baldwin to lead master classes during her annual workshop and festival of song. In addition to singing in one of the master classes, participants received private coaching from either Warren Jones or Ken Noda, and were invited guests for the full week of song programs.

March 12–15, 2013

Takács Quartet: Haydn, Beethoven, and Bartók String Quartets

For String Quartets

The famed string quartet invited three young ensembles to explore works of Haydn, Beethoven, and Bartók, as well as the broader dimensions of a chamber music career.

April 21–25, 2013

John Adams and David Robertson: The 21st-Century American Contemporary Ensemble

For Conductors and Instrumentalists

Led by two of the most compelling figures in American music, this workshop focused on American 20th- and 21st century music, and on the collaboration among composer, conductor, and ensemble in realizing new scores.

WMI Digital

Musical Exchange (Ages 13–25)

Carnegie Hall invited young musicians to connect with peers from around the world and share their musical performances through Carnegie Hall’s global online community. Musical Exchange focused on musical creativity, sharing, and international collaboration, connecting young musicians from around the world in an online program. Participants during the 2012–2013 season included students from the North America and Europe, as well as Taiwan, India, Indonesia, Australia, Brazil, South Africa, Turkey, and Egypt. The community currently has nearly 3,000 members, and had more than 40,000 unique visitors in 2012–2013.

Digital Library

Carnegie Hall’s Digital Library offers a rich collection of online educational materials, a multimedia library, and interactive resources from WMI programs. Designed for use by educators, young artists, and teaching artists, the Digital Library helps make WMI’s programs broadly accessible nationally and internationally through these online resources. The library currently holds over 1,000 items, and has over 75,000 unique users annually through the Carnegie Hall website alone. In addition, this season WMI extended the distribution of its digital library collections by sharing resources more broadly through YouTube and iTunes U. To support the future development of the Digital Library and the development of free educational resources for music learning, WMI completed a study on Open Educational Resources for K–12 Music Education in collaboration with the Institute for the Study of Knowledge Management in Education. This study was funded by the William and Flora Hewlett Foundation.

Mozilla Hive NYC Learning Network

In the 2012–2013 season, Carnegie Hall was invited to join the Mozilla Hive NYC Learning Network, which was founded in 2009 through The MacArthur Foundation’s Digital Media & Learning initiative to fuel collaborations between cultural organizations and to create new learning pathways and innovative education practices based on the principles of Connected Learning. A city-wide lab comprising 56 non-profit organizations—museums, libraries, after-school programs, and informal learning spaces—Hive NYC brings educators, designers, scientists, technologists, and other youth development experts together to create a network of opportunities that prepare young people for success in the digital age. Network members have access to funding to support this work through The Hive Digital Media Learning Fund in The New York Community Trust. Visit explorecreateshare.org for more information.

Film Score Project

“What I enjoyed about the Film Score Project was plunging into an unknown world,” said composer Mikhail Johnson. Johnson was one of 36 composers who participated in the Musical Exchange Film Score Project, an opportunity for composers ages 13–25 in the Musical Exchange Composing group to write a score for *The Juggler*, a brief documentary film by Ali Gorfinkel, a student at Frank Sinatra High School of the Arts. Tim Fehling of Madison, Wisconsin, was the competition winner, and his score was performed and recorded by professional musicians in New York City.

Musical Exchange helps students connect with their peers, share performances, and engage in dialogues that encourage artistic growth and foster curiosity about music and culture around the world. As the Film Score Project progressed, a series of online features was posted with advice from experienced film composers, inspirational quotes from composers, feedback to composers from performers, and daily composing tips.

Excitement built as the April submission deadline approached and composers began to post their scores and comment on their own work as well as that of their peers. Comments and encouragement came in many forms, including “Great use of rhythmic motifs and harmonies with splashes of bitonality,” and “Fun piano slides, catchy, quick, and upbeat—perfect for the fast action of the juggling balls.”

At the competition’s end, the participants were asked what they enjoyed most about the project. Venessa Lachance echoed what many in the group felt: “I really aspire to write music for a living. I think opportunities like this one are the ones where we learn the most. It’s not by being in a classroom and reading about composition that I can learn, but by actually doing it for people. I’m so thankful for the support of the community; I feel that we are all working together to be better composers, and we help each other.”



Each dot on the map represents the site of a WMI program held during the 2012–2013 season.

- Carnegie Kids
- Musical Connections
- Neighborhood Concerts
- Link Up
- Musical Explorers
- Arts Achieve
- Blueprint School
- Creative Learning Project
- Count Me In



Programs of the Weill Music Institute reached teachers and students around the country and across the globe during the 2012–2013 season.

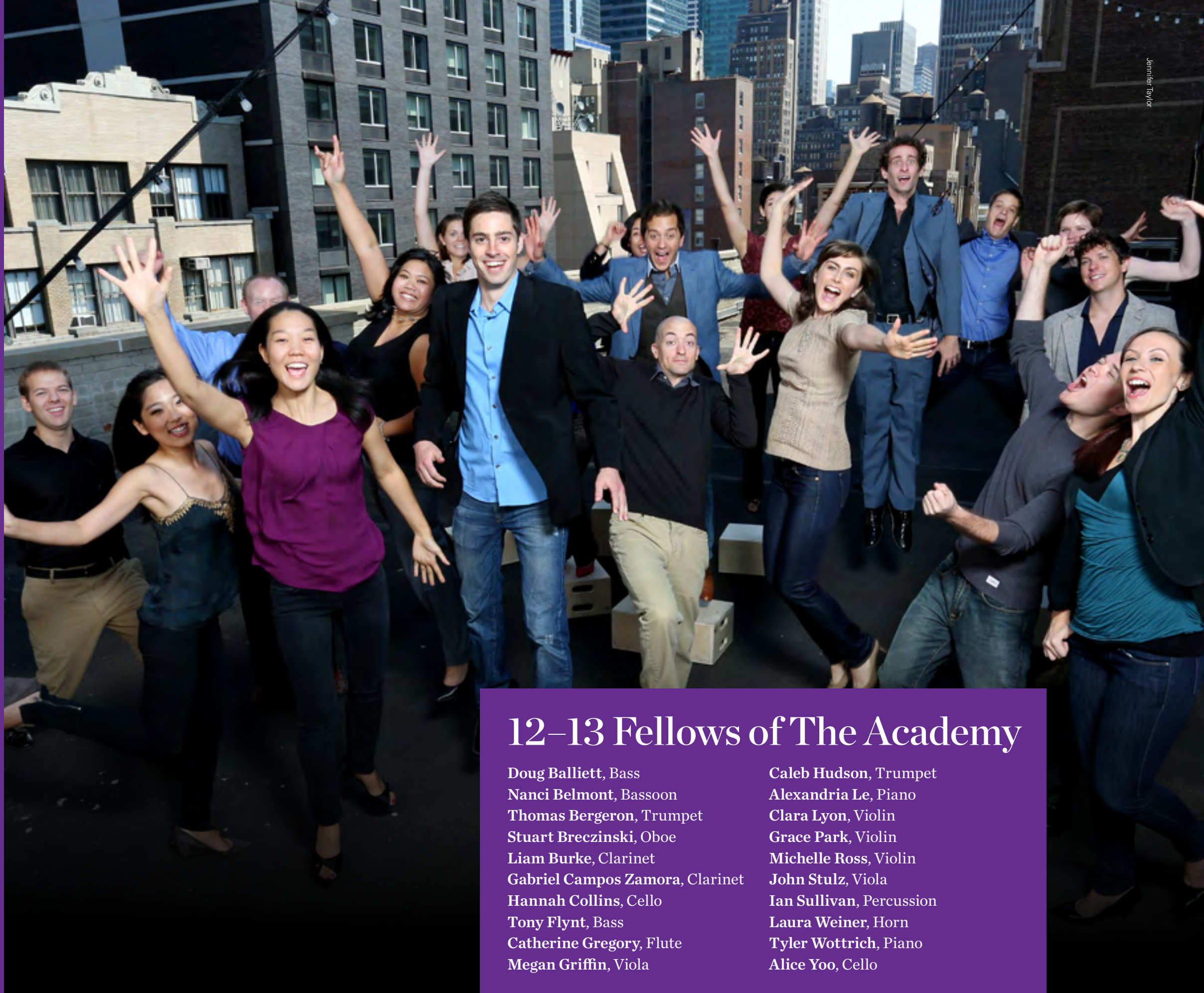
Arkansas, California, Connecticut, Florida, Georgia, Illinois, Indiana, Louisiana, Maryland, Michigan, Mississippi, Missouri, Nebraska, New York, Oregon, Rhode Island, South Carolina, Tennessee, Texas, Washington, West Virginia
Canada, Spain, and Japan



The Academy

A program of Carnegie Hall, The Juilliard School, and the Weill Music Institute in partnership with the New York City Department of Education

In its sixth year, The Academy welcomed a new class of 20 fellows, selected by a competitive audition from a record-breaking 373 applicants. Performing as Ensemble ACJW, the fellows appeared in public concerts at Carnegie Hall, Juilliard, Trinity Church, Galapagos Art Space, and neighborhood concert venues across the city. In October, Ensemble ACJW performed a program that featured the New York premiere of Samuel Carl Adams's *twenty four strings*, a work commissioned by Carnegie Hall. A December concert featured Baroque music conducted by Harry Bicket of The English Concert with soprano Lucy Crowe. As part of The Academy's annual residency at Skidmore College, Ensemble ACJW premiered Missy Mazzoli's *Set That on Fire*, another commissioned work, at the Helen Filene Ladd Concert Hall at the Arthur Zankel Music Center. The fellows also participated in residencies in 20 New York City schools and presented interactive performances in the Weill Music Institute's Musical Connections program, which brings live music to healthcare settings, correctional facilities, senior service organizations, and homeless shelters.



Jennifer Taylor

12–13 Fellows of The Academy

Doug Balliett, Bass
Nanci Belmont, Bassoon
Thomas Bergeron, Trumpet
Stuart Breczinski, Oboe
Liam Burke, Clarinet
Gabriel Campos Zamora, Clarinet
Hannah Collins, Cello
Tony Flynt, Bass
Catherine Gregory, Flute
Megan Griffin, Viola

Caleb Hudson, Trumpet
Alexandria Le, Piano
Clara Lyon, Violin
Grace Park, Violin
Michelle Ross, Violin
John Stulz, Viola
Ian Sullivan, Percussion
Laura Weiner, Horn
Tyler Wottrich, Piano
Alice Yoo, Cello

Chronological Listing of Ensemble ACJW Events

October 16–20, 2012
Skidmore College Residency

October 19, 2012
Performance, Arthur Zankel Music Center,
Helen Filene Ladd Concert Hall

October 22, 2012
Weill Recital Hall

November 11, 2012
Our Saviour's Atonement
Lutheran Church

November 13, 2012
Paul Hall, The Juilliard School

December 2, 2012
Zankel Hall

January 9, 2013
Paul Hall, The Juilliard School

February 12–16, 2013
Skidmore College Residency

February 15, 2013
Performance, Arthur Zankel Music Center,
Helen Filene Ladd Concert Hall

February 18, 2013
Weill Recital Hall

March 11, 2013
Paul Hall, The Juilliard School

March 19, 2013
Zankel Hall

April 14, 2013
Our Saviour's Atonement
Lutheran Church

April 17, 2013
Weill Recital Hall

May 2, 2013
Trinity Wall Street

May 10, 2013
Weill Recital Hall

May 16, 2013
Trinity Wall Street

May 23, 2013
Trinity Wall Street

June 4, 2013
Paul Hall, The Juilliard School

June 10, 2013
Galapagos Art Space

Messiaen's *Des canyons aux étoiles*

When Robert Spano conducted Ensemble ACJW in a Zankel Hall performance of Olivier Messiaen's *Des canyons aux étoiles* in March, audience members were given a photo guide to enhance the experience. The Academy fellows made Messiaen's colorful celebration of nature even more vivid with this guide by showcasing the beauty of Utah's Bryce Canyon and Zion national parks and identifying the birds whose songs are heard throughout the work. Students from Academy fellow Laura Weiner's music class at Grover Cleveland High School enthusiastically partnered with the school's art department to create artwork inspired by Messiaen's music. Weiner's partner teacher and several of her students from the school attended the performance to hear this awe-inspiring work, and had the opportunity to see Weiner as a featured soloist as well as to see their art displayed in the Zankel Hall lobby.



Laura Weiner with Robert Spano and Ensemble ACJW | March 19

Stefan Cohen



Catherine Gregory assists the flute section during band practice at PS/MS46.

Nan Melville

A Musical Inspiration Chain

In fall 2012, Academy fellows began residencies in 20 New York City public schools and developed interactive programs that they performed with Academy colleagues in all of the schools and for people in need at non-traditional venues across the city through the Musical Connections program. One of the highlights was a spring 2013 program created by fellows in which they presented an inspiration chain that traced music from Bach to JAY Z. The fellows performed excerpts of works in chronological order, including music by Bach, Handel, Mozart, Beethoven, Schumann, Brahms, Mahler, Debussy, Stockhausen, The Beatles, and finally JAY Z, showing how each composer inspired the next and unpacking what inspires composers to write music. This program toured to a wide variety of venues—including middle and high schools, Rikers Island for convicted and detained inmates, and Penn South NORC for seniors—and was received enthusiastically by every audience. At MS244 in the Bronx, for the rousing grand finale, students performed on stage with the fellows on JAY Z's "Empire State of Mind."

Academy Partner Schools 2012–2013 Season

Bronx

MS244 The New School for Leadership and the Arts
Pelham Academy for Academic and Community Engagement
Fordham High School for the Arts

Brooklyn

PS207 Elizabeth G. Leary Elementary School
Fort Hamilton High School
PS112 Lefferts Park Elementary School
PS200 Benson Elementary School
Brooklyn High School of the Arts
Edward R. Murrow High School
PS75 The Maya Cortiella Elementary School
PS241 The Emma L. Johnson Elementary School

Manhattan

PS/MS46 The Arthur Tappan Elementary School
New York City Lab School of Collaborative Studies
City College Academy of the Arts
PS/MS161 Pedro Albizu Campos High School

Queens

Grover Cleveland High School
MS158 Marie Curie Middle School
PS21 Edward Hart
PS887 The 51 Avenue Academy

Staten Island

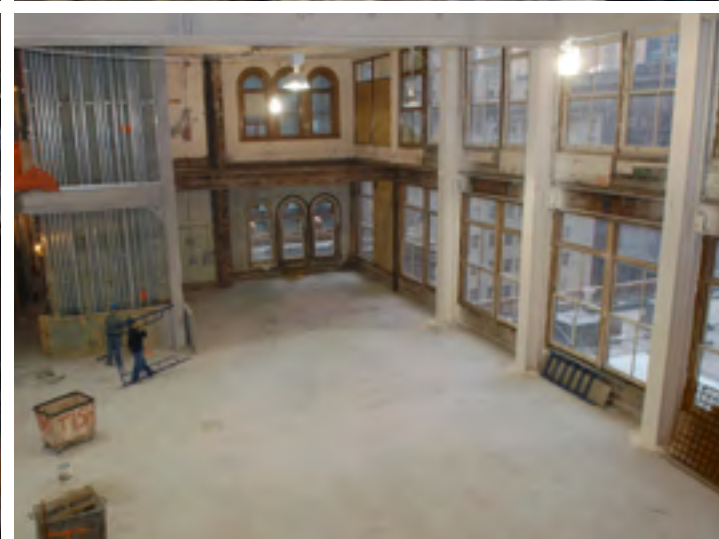
IS61 William A. Morris Middle School

Studio Towers Renovation Project

Work on Carnegie Hall's Studio Towers Renovation Project continues to progress as this transformational building project quickly approaches completion and its scheduled opening to the public in fall 2014. The massive renovation will create inspirational new spaces dedicated to music education on the existing upper floors of the building while also refurbishing Carnegie Hall's backstage areas, ensuring that the Hall continues to serve the world's greatest artists and the community-at-large in the best possible way into the 21st century and beyond. The project fully supports Carnegie Hall's non-profit mission—making great music accessible to as many people as possible. In line with this, an integral part of the new facilities will be the 61,000-square-foot Judith and Burton Resnick Education Wing, newly named in gratitude for the Resnick family's generous support of Carnegie Hall.

The Judith and Burton Resnick Education Wing will include 24 new dynamic and vibrant music rooms where young musicians, students, and teachers will have the opportunity to meet, learn, explore, and share musical experiences. Carnegie Hall's new, state-of-the-art Archives will also be located here, providing scholars and visitors access to the great venue's historical records. An outdoor roof terrace, adjacent to the Resnick Education Wing, will be a welcoming gathering place for visitors to the building.

Our deepest thanks go to the City of New York, the State of New York, Judith and Burton Resnick, and Joan and Sanford I. Weill, whose \$10 million challenge grant, in addition to their \$25 million leadership gift, gave tremendous support to this major initiative. Carnegie Hall wishes to recognize and honor additional donors who have made leadership gifts to this historic campaign.



\$10,000,000 or more
Joan and Sanford I. Weill
Judith and Burton P. Resnick

\$1,000,000 to \$6,000,000
Lily and Edmond J. Safra
Leni and Peter May

Linda and Earle S. Altman
Mrs. Mercedes T. Bass
Clarissa and Edgar Bronfman, Jr.
Mr. and Mrs. Nicola Bulgari
The Diller-von Furstenberg Family Foundation
Eugene and Emily Grant Family Foundation
Hearst Foundations
Mr. and Mrs. Klaus Jacobs
Anna-Maria and Stephen Kellen Foundation
Mark and Anla Cheng Kingdon Foundation
Bruce and Suzie Kovner
Mr. and Mrs. Robert I. Lipp
Mr. and Mrs. Terry J. Lundgren / Macy's, Inc.
Beth and Joshua Nash
Ronald O. Perelman Family Foundation
Susan and Elihu Rose Foundation
Mrs. Julio Mario Santo Domingo
Henry and Elizabeth Segerstrom
Siemens Corporation
Mr. and Mrs. A. J. C. Smith
S. Donald Sussman
Judy Francis Zankel
The Zankel Fund
Ann Ziff
Anonymous (2)

\$100,000 to \$999,999
Mr. and Mrs. Anthony B. Evnin
The Horace W. Goldsmith Foundation
The Marc Haas Foundation
Carl Jacobs Foundation
Mr. and Mrs. Thomas G. Maheras
Mr. and Mrs. Lester S. Morse Jr.
The Joe Plumeri Foundation
Phyllis and Charles M. Rosenthal
Dr. and Mrs. Thomas P. Sculco

The Dan and Sheryl Tishman Family Foundation Inc.

AECOM
Mr. and Mrs. Kenneth J. Bialkin / Bialkin Family Foundation
Deloitte LLP
Ernst & Young LLP
Susan and Ed Forst / Forst Family Foundation
KPMG LLP
PwC
Edward John and Patricia Rosenwald Foundation
Suki Sandler
The Peter Jay Sharp Foundation
John W. and Mary S. Zick
Anonymous (2)

Clive and Penny Gillinson
Frederick J. Iseman
Stella and Robert Jones
Gilbert and Lena Kaplan
The Elizabeth and Frank Newman Charitable Foundation
Mr. and Mrs. William G. Parrett
Linda J. Wachner

Mr. and Mrs. Emanuel Ax
Norton Belknap
Mr. William R. Berkley
Anne M. Finucane
Sir Howard Stringer
Kurt G. Strovink

Lead funding provided by the City of New York, with additional support from New York State.
New York City Department of Cultural Affairs

New York City Council
Office of the Manhattan Borough President
New York State Executive Office
New York State Senate
New York State Council on the Arts

As of June 30, 2013

Project Architect: lu + Bibliowicz Architects LLP
Construction Manager: Tishman Construction Corporation



Donors

With over \$28 million in Annual Fund contributions in 2012–2013, our generous donors continued to advance Carnegie Hall’s mission of bringing extraordinary music performed by the world’s greatest artists to the widest possible audience. Our artistic and educational programs flourished due to their continued support.

We particularly want to thank Bank of America for its eighth consecutive season of sponsorship, and warmly salute Trustee Anne M. Finucane for fostering this valuable partnership. We also express our gratitude to the Irene Diamond Fund, whose stellar support can be felt in numerous Carnegie Hall initiatives on the concert stage and through the Weill Music Institute.



Sir Elton John performing at the 2013 Medal of Excellence Gala | June 13

Annual Fund

Individuals and Foundations

Platinum Circle \$100,000 or more

Linda and Earle S. Altman
Estate of Brooke Astor
Mrs. Mercedes T. Bass
Blavatnik Family Foundation
Mr. and Mrs. Nicola Bulgari
Carnegie Corporation of New York
Yoko Nagee Ceschina
Estate of Joy Craft
The Irene Diamond Fund
Barry Diller and Diane von Furstenberg
Ford Foundation
Susan and Edward C. Forst and Goldman Sachs Gives
Mrs. Marina Kellen French
Max H. Gluck Foundation
The Marc Haas Foundation
The Irving Harris Foundation
Mr. Frederick J. Iseman
Estate of Doris Kass
Anna-Maria and Stephen Kellen Foundation
Leona Kern
Mark and Anla Cheng Kingdon Foundation
The Kovner Foundation
Bruce and Suzie Kovner
Martha and Bob Lipp
Leslie and Tom Maheras
The Andrew W. Mellon Foundation
Mr. and Mrs. Lester S. Morse Jr.
The Joe Plumeri Foundation
Mr. and Mrs. Oscar de la Renta
The Rockefeller Foundation
The Felix and Elizabeth Rohatyn Foundation
Susan and Elihu Rose Foundation
Phyllis and Charles Rosenthal
Ms. Sana Sabbagh
The Fan Fox and Leslie R. Samuels Foundation
Mrs. Julio Mario Santo Domingo
The Peter Jay Sharp Foundation
Mr. and Mrs. Stanley S. Shuman
Estate of Eva Vida
Joan and Sanford I. Weill
Hyman, Mildred, Arthur, and Elliott Wiener Family
Ann Ziff

\$50,000 to \$99,999

The Bodman Foundation
The Edwin Caplin Foundation
E. H. A. Foundation
The Enoch Foundation
Estate of Philip Chaves
The William and Flora Hewlett Foundation
The Joan and Irwin Jacobs Fund of the Jewish Community Foundation
Audrey Love Charitable Foundation
Mr. and Mrs. Terry J. Lundgren
The Ambrose Monell Foundation
The Edmond de Rothschild Foundation
Suki Sandler
Milton and Dorothy Sarnoff Raymond Foundation
The Morris and Alma Schapiro Fund
Dr. and Mrs. Thomas P. Sculco
Henry and Elizabeth Segerstrom
The Shubert Foundation
Mr. and Mrs. A. J. C. Smith
Mrs. Charles B. Wrightsman

Golden Circle \$25,000 to \$49,999

Mr. and Mrs. Robert Abrams
The Alec Baldwin Foundation, Inc.
Mr. and Mrs. Frederick C. Benenson
Mr. David Bottoms
The Ralph M. Cestone Foundation
Mrs. Judith Chasanoff
Aaron Copland Fund for Music
D. Ronald Daniel and Lise Scott
Mr. and Mrs. Richard A. Debs
Jean-Marie and Elizabeth Eveillard
Mr. and Mrs. Anthony B. Evnin
Mr. and Mrs. Donald Fried
Ann and Gordon Getty Foundation
Rosalind and Eugene J. Glaser Foundation
Mr. Robert D. Goldfarb
Jean & Julia Goldwurm Memorial Foundation
Estate of Lillian Griffel
The Charles Haimoff Endowment
The DuBose and Dorothy Heyward Memorial Fund
Mr. and Mrs. Klaus Jacobs
Stella and Robert Jones
Gilbert and Lena Kaplan
Dr. Jamie Koufman
The Philip and Janice Levin Foundation
A. L. and Jennie L. Luria Foundation
Leni and Peter May
Henry and Lucy Moses Fund
Linda and Stuart Nelson
Ronald O. Perelman



Bruce and Suzie Kovner



Clive Gillinson, Congresswoman Carolyn B. Maloney, and Sanford I. Weill



Terry J. and Tina Lundgren



Tom Brady, Jerod Mayo, Robert K. Kraft, and Sanford I. Weill

Medal of Excellence

A Super Bowl-winning quarterback, a host of luminaries, and a rock-'n'-roll legend were on hand when we honored Robert K. Kraft—Founder, Chairman and CEO of The Kraft Group and Chairman and CEO of the New England Patriots—at the Medal of Excellence Gala. The award was presented to Mr. Kraft by Sanford I. Weill, Chairman of Carnegie Hall's Board of Trustees, for Mr. Kraft's outstanding leadership in business and philanthropy. The star-studded event was attended by a number of Patriots players including quarterback Tom Brady, and Scott Pelley, Managing Editor of the *CBS Evening News* and a correspondent for *60 Minutes*, acted as the Master of Ceremonies for the evening. The excitement culminated in a surprise performance by Sir Elton John that closed out the festivities.

Our sincerest thanks go to our honoree, Robert K. Kraft, for his generosity and dedication to Carnegie Hall. This memorable event could not have taken place without the guidance of its leadership, including Gala Chairs Sanford I. Weill, Brian T. Moynihan, Anne M. Finucane, Jerral W. Jones, Edward C. Forst, Jack Connors, Jr., Ronald O. Perelman, Terry J. Lundgren, and Lowell C. McAdam.

Mr. and Mrs. Jonathan D. Resnick
Mr. Jay B. Rosenberg
Marge Scheuer and Family
Mr. Peter William Schweitzer
Jeanne and Herbert Siegel
Mr. and Mrs. Larry A. Silverstein
Mr. and Mrs. Thomas W. Smith
James Thurmond Smithgall
Mr. and Mrs. Howard Solomon
The Starr Foundation
Jean Stein
Robert L. Turner
Vital Projects Fund
Voice Institute of New York
Mary J. Wallach
The Weiler Fund
George and Joyce Wein Foundation
Judy Francis Zankel
Anonymous

Silver Circle \$20,000 to \$24,999

Mr. and Mrs. John P. Birkelund
The Gladys Kriebel Delmas Foundation
Mr. and Mrs. Walter A. Eberstadt
The Samuel Freeman Charitable Trust
Estate of Elliott C. Carter
Andrew J. Martin-Weber
The New York Community Trust—Ilse Nelson Fund
The Barbro Osher Pro Suecia Foundation
Robert B. Silvers
Mary Ellen and Karl von der Heyden
Jeanette S. and Paul A. Wagner

Chairman's Circle \$15,000 to \$19,999

Mr. and Mrs. Emanuel Ax
Rose M. Badgeley Residuary Charitable Trust
Mr. Norton Belknap
Bialkin Family Foundation
Mr. H. S. Beau Bogan and Mr. Elliot M. Friedman
Ruth and Louis S. Brause
Norman Brinker Fund of the Communities Foundation of Texas
Estate of Loretta Connolly
Chamber Music America
Cynthia and Herbert Fields
Seth Frank, in memory of Dr. Robert Mellins
Clive and Penny Gillinson
Jane and Charles Goldman
Mr. and Mrs. Stephen Graham
Jennifer and Bud Gruenberg
The Grammy Foundation
Hermione Foundation
Richard H. Holzer Memorial Foundation
Robert Wood Johnson Jr. Fund of the Princeton Area
Community Foundation
Florence and Robert Kaufman
Mrs. Andrea Klepetar-Fallek
Mr. and Mrs. Daniel R. Lewis
Mr. Arthur L. Loeb
Mrs. Nancy A. Marks
Sylvia and Leonard Marx Jr.
Mrs. Helen Nash
Sylvan and Ann Oestreicher Foundation Inc.
Mr. and Mrs. William G. Parrett
Judith and Burton P. Resnick
Mr. and Mrs. Charles J. Seidler
Mr. Paul J. Sekhri
Mrs. Alice Shure
Robert Summer and Susan Kasen

The Tombros Foundation
Mr. and Mrs. Rafael Viñoly
The Isak and Rose Weinman
Foundation
Mrs. Shannon Wu and Mr. Joseph
Kahn

Artist's Circle \$10,000 to \$14,999

Roger and Camille Abelson
Mr. and Mrs. Alan M. Ades
Mr. and Mrs. Burnside E.
Anderson III
The Arnow Family Fund
Mr. Albert Behler
The Barker Welfare Foundation
Mr. Kim D. Bleimann
The Brodsky Family Foundation
Charles R. Bronfman and
Rita Mayo
Deeds Foundation
Marjorie and Alan F. Doniger
The Fascitelli Family Foundation
First Eagle Investment
Management Foundation
Ella Fitzgerald Charitable
Foundation
Mr. and Mrs. Leonard Feinstein
David and Tanya Fox
Barbara W. Fox-Bordiga,
in memory of Lord Bordiga
Leslie and Roslyn Goldstein
Foundation
Mr. Alejandro Gomez Cesar
Joan Harris, The Irving Harris
Foundation
Carl Jacobs Foundation
Jephson Educational Trusts
Mr. and Mrs. T. Michael Johnson
Sidney R. Knafel and
Londa Weisman
Lang Lang
The Lanie & Ethel Foundation
Susan and Joel Leitner
Lese Family Foundation

Leon Levy Foundation
Margaret and Oscar Lewisohn
Mr. Yo-Yo Ma and Ms. Jill Hornor
Ambassador Bonnie McElveen-
Hunter
Mr. Robert Menschel
In honor of Mr. Dennis M. Nally
Beth Goldberg Nash and
Joshua Nash
The Oni Zazen Collection
Hiroko Onoyama and
Ken Sugawara
Porter Family Charitable
Foundation
Mr. and Mrs. Harold Prince
Jane and Paul Rittmaster
Mr. and Mrs. Jonathan P. Rosen
Mrs. Lily Safra
Mr. Gil Shiva
Abraham and Beverly Sommer
Foundation
Jackson E. and Evelyn G. Spears
Foundation
Mr. Joseph A. Stern
Mr. Kurt G. Strovink
S. Donald Sussman
Mr. and Mrs. Wilmer J.
Thomas Jr.
The Vidda Foundation
Svetlana and Herbert Wachtell
Foundation
Mrs. John L. Weinberg
Neil Westreich
In honor of Ruth Widder
Mr. and Mrs. Charles O. Wood
Mr. Uzi Zucker
Anonymous (2)

Carnegie Circle \$5,000 to \$9,999

AGVAR Chemicals
Ms. Jacqueline Albert Simon
Mrs. Robert Allen
Aviation Development Council
Babbitt Family Charitable Trust

Barbash Family Fund
Mr. Shepard Barbash and
Ms. Vicki Ragan
Mr. and Mrs. Michael Beaury
Mrs. Joan Benny
Mrs. Stephanie Bernheim
Ms. Elaine S. Bernstein
Peggy and Paul Bernstein
Francine J. Berry
Luciano and Giancarla Berti
Mr. Sam Selim Beyda
Mr. Ronald E. Blaylock
Mr. and Mrs. James A. Block
Gary Brewster and Tess Mateo
Mr. and Mrs. Robert L. Burch
Mr. and Mrs. Jon Burnham
Mr. and Mrs. Arthur L. Carter
Cerberus Capital
Management, L.P.
Chaffetz Lindsey LLP
Mrs. Betty S. Chaurize
Mr. Theodore Chu
Mr. and Mrs. Dominique Clavel
Mr. Steve Coffey and
Mr. George Stirling
Mr. Yann Coatanlem
Jill and Irwin B. Cohen
Yvonne Cohen
Michele and Terry Cone
Mr. Leon Constantiner
Mr. Victor Constantiner
Nancy and Bruce Cooper
Edmond and Yvette Cotty
Mr. George F. Cumbler
Michael F. Cusick
Ms. Elizabeth de Cuervas
Howard Dillon and
Nell Dillon-Ermers
Mrs. Strachan Donnelley
Mr. and Mrs. Alvin H. Einbender
Dr. Joan Eliasoph
Mr. Stanley Epstein
Mr. Otho Eskin
Mr. and Mrs. Leroy Fadem
Faith Golding Foundation Inc.
Mr. Giovanni Favretti

Mr. David H. Feinberg
Mr. Kenneth Feinberg
Mr. and Mrs. Stephen W. Fillo
Doucet and Stephen Fischer
Mr. and Mrs. John French III
Fribourg Foundation
Mr. Colin Gardner
Deborah and John Waldman
Gatsos
Mr. Richard Gere
The Gilder Foundation
Mr. and Mrs. John D. Gilliam
Alexander Goldberg
Mr. David M. Goldman and
Mr. Mark A. Schaffer
Mr. and Mrs. John Goldman
Mr. John Goodrich
Michael Gordon
Dr. and Mrs. Victor R. Grann
Mr. and Mrs. Eugene M. Grant
Estate of Edwin M. Green
Monika and Peter Greenleaf
Mr. L. Jay Grossman Jr.
Mr. Peter Gruenberger and
Dr. Carin Lamm
Anne and John Hall
Lynne and Harold Handler
Ms. Adriana Herrera
Dr. Lynne Harrison
Carol and Howard Holtzmann
Marilyn Horne
Dr. Betty S. Iu
Mr. Stuart M. Johnson
Mr. David N. Judelson
Mr. and Mrs. Robert Karin
Marilyn and Stanley Katz,
in honor of Mr. and Mrs.
Burton Resnick's
50th Wedding Anniversary
Dr. and Mrs. Robert Kavesh
Ms. Yukako Kawata
Mrs. Irene King
Ms. Jane W. Kitselman
Cindy Knuth
Mr. and Mrs. Daniel F. Kolb
Mr. and Mrs. Alan M. Krause



Marilyn Horne and Emanuel Ax



Susan W. and Elihu Rose, and Barbara and Richard A. Debs

Dr. Barbara Kravitz
Mr. and Mrs. Mickey Kupperman
Ms. Solange Landau
Mr. Steven E. Lane
Mr. and Mrs. Leonard A. Lauder
Elaine and Robert LeBuhn
Ms. Sue Lehmann
Lese Family Foundation
In memoriam of Samene W.
Lesser
The Irene Levoy Foundation
Ms. Francesca Liechenstein and
Ms. Jane Riskin Bean
Mr. and Mrs. A. Michael Lipper
William and Diane Lloyd
Mr. Archie Mac Gregor
Mr. Milton Martinez
Mr. and Mrs. Joseph McLaughlin
Mr. Ajai Mehta
Fundacion Meijer-Werner
Jordan B. Seaman
Mid Atlantic Arts Foundation
Miller Khoshkish Foundation
Mrs. Alice Netter
Mrs. K. F. Netter
The Lizabeth and Frank
Newman Charitable
Foundation
Mr. Stanley Newman and
Dr. Brian Rosenthal
Mr. and Mrs. Claude Nicaise
Mr. and Mrs. John A. Nielsen
In Memory of Kirk S. Norton
Ms. Paula Sarnoff Oreck
Parnassus Foundation /
Jane and Raphael Bernstein
Peoria Industrial Caterpillar
William E. Phillips and
Barbara Smith
Ms. Debra L. Pipines
Mr. and Mrs. Leon B. Polsky

Pascale and Ernest Raab
Mr. and Mrs. Ira M. Resnick
Allan and Reda R. Riley
Foundation
Nataly and Toby Ritter
Mr. David Rockefeller Sr.
The Tom Roush Fund of the
Funding Exchange
Gregory St. John and
Gary McKay
Mr. and Mrs. Lawrence Saper
Rosita Sarnoff and Beth Sapery
Jack and Marianne Sauter
Dr. and Mrs. Daniel Schapiro
Mr. and Mrs. Gregg L. Schenker
Alfred and Anita Schnog
Mr. and Mrs. Edmund Schroeder
Lynn Schusterman
Mr. and Mrs. William A.
Schwartz
Jordan B. Seaman and
The Grateful Foundation
Mr. Martin Selig
Mrs. Florence L. Seligman
Mr. and Mrs. Hardwick Simmons
Mr. and Mrs. F. Randall Smith
Dr. and Mrs. Peter M. Som
Mrs. Annaliese Soros
George T. Spera Jr. and
Jane Ginsburg
Kathryn Steinberg
Sydney and Jonathan Stern
Mrs. Vera Stern
Mr. James B. Stewart Jr. and
Mr. Benjamin Weil
Mr. and Mrs. Edward Streim
Lee and Roger Strong
Ms. Shining Sung
Mr. Jay H. Tanenbaum
Robert and Jane Toll
Mr. and Mrs. Jesse I. Treu

Dr. and Mrs. Constantine T.
Tsitsera
Marian M. Warden Fund of
the Greater Harrisburg
Foundation
Charles and Jacqueline Warren
Drs. Andrew and Nancy Weiland
Mr. and Mrs. Lawrence A.
Weinbach
Ms. Henrietta C. Whitcomb and
Mr. David K. Whitcomb
Mr. and Mrs. William T. Wolf
Ms. Dian Woodner
The Woodbourne Foundation
Jay N. and Susan Woodworth
Chris and Lonna Yegen
Peter Young and Merit E. Janow
Pia and Jimmy Zankel
Ms. Susan Zeckendorf
Mr. and Mrs. John W. Zick
Ms. Audrey Y. Zucker
Anonymous (6)

Carnegie Club \$2,500 to \$4,999

Mr. Adil Abdulali
Mr. Ernest Abrahamson
Gloria and Bert Abrams
Mr. and Mrs. William H. Abrams
Mr. and Mrs. Lawrence D.
Ackman
Margot Adams
Atlas Acon Electric
Deborah and Charles Adelman
Joseph and Jacqueline Aguanno
Arlene and Alan Alda
Bruce Alleborn
Dr. Jennifer Altman and
Mr. Jason Fein
Ms. Sandra Amann and

Mr. Michael Pashby
Amarath Foundation
The Amphion Foundation
Ms. Rita Arlen
Ms. Sara K. Arlin and
Ms. Jennifer L. Mowad
Ms. Norma J. Arnold
Anne Aronovitch and
Richard Eger
Ronald D. Arron and
Roberta Weiner
Ms. Martina Arroyo
Ms. Adrienne Arsht
Mrs. George Asch
David and Eugenia Askren
Berit and Steven Atkins
Atlas Acon Electric
Auramet-Tradin LLC
Mr. and Mrs. Paul Avrich
Edwin Bacher
Joseph T. Baio
Mr. and Mrs. Phil Bannes
Bartko, Zankel, Tarrant & Miller
Mr. Sid R. Bass
Mr. Sanford L. Batkin
Mr. Andreas Baum
Ginette and Joshua Becker
Ms. Lisa G. Beckerman
Mr. Joseph Bell and
Mr. Peter Longo
Mr. and Mrs. Selim Benardete
Mrs. Susan Bender
Ms. Denise Benmosche
Esme and Roger Berg
Mr. and Mrs. Franklin M. Berger
Mr. Martin Berkowitz
Sheila and Stephen Bernard
Daniel L. and Ann L. Bernstein
Barbara and Joel Edward Bickell
Dr. Jan E. Lewis and
Mr. Barry Bienstock



Support for the National Youth Orchestra of the United States of America

Last summer, 120 young musicians from 42 states and diverse backgrounds were given a once-in-a-lifetime opportunity when Carnegie Hall's Weill Music Institute launched the National Youth Orchestra of the United States of America (NYO-USA). We want to thank NYO-USA Lead Sponsor Bloomberg, Advisory Board Chairman Ronald O. Perelman, Joan and Sanford I. Weill and the Weill Family Foundation, the Rockefeller Foundation, the Peter Jay Sharp Foundation, and Ann Ziff for making the tour possible. Public support was provided, in part, by an award from the National Endowment for the Arts.



Joan H. Weill, Linda Lindenbaum, Clive Gillinson, Sanford I. Weill, Mayor Michael R. Bloomberg, and Commissioner Kate D. Levin



Laura H. and John Pomerantz, and Phyllis Mack



Jerod Mayo, Tom Brady, Andre Tippett, and Vince Wilfork

Mary Billard and Barry Cooper
 Ms. Cynthia E. Bing
 Adrienne and Robert Birnbaum
 The Blackstone Group
 Ms. Jolana Blau
 Ms. Jane S. Block
 Harvi and Bob Bloom
 Jane K. and Allen L. Boorstein
 Ms. Janet Malcolm Botsford
 Mr. Stuart D. Boynton
 Mr. Clifford Brand and
 Ms. Robin Lynn Alexander
 Cheryl and David Brause
 Mr. and Mrs. Ludwig Bravmann
 Mr. John Brewer
 Dr. Rosemarie D. Bria-Levine
 Dr. and Mrs. George Brief
 Mr. and Mrs. Klaus P. Brinkmann
 Elizabeth A.R. and
 Ralph S. Brown Jr.
 Mr. Ryan Brown
 Mrs. Susanne Brundige
 Ms. Lorraine Buch
 Mr. and Mrs. Leslie Buckland
 Mr. and Mrs. George R. Bunn Jr.
 Mr. and Mrs. Daniel A. Burack
 Herbert and Ann Burger
 Mr. Sergey G. Butkevich
 Mr. and Mrs. Gilbert Butler
 Sandra and Michael J. Cargill
 Caxton Associates
 Century Direct
 Catia Zoullas Chapin
 Dr. Gilbert R. Cherrick
 Mrs. Marjorie Chester
 Mr. Pablo Cisilino and
 Ms. Silvina Leone
 Ms. Anne Cohen
 Mr. Daniel Cohen
 Phoebe and Dr. Bernard Cohen
 Ms. Karen Cole
 Mr. and Mrs. Lewis G. Cole
 Mr. John P. Coll Jr.
 Mr. A. Collado-Schwarz
 Richard Collens MD
 Elizabeth Compton and
 Eric P. Grubman
 Mr. Ronald E. Compton and
 Mrs. Nancy S. Compton
 Mr. and Mrs. Costa Constantine
 Mr. and Mrs. Kevin Conway
 Ms. Judith Corrente
 The Cowles Charitable Trust
 Frank J. Cracolici
 Mr. William Craig III
 Dr. Michael Cucka
 Peter D. and Julie Fisher Cummings
 Family Foundation
 Ms. Ashley Curling
 Mr. and Mrs. William Curry
 Curtains Up!
 Barbara and Richard B. Dannenberg
 Kathy Dean
 Steve and Connie Delehanty
 Ms. Jamie deRoy
 Jennie L. and Richard K. DeScherer
 Mr. and Mrs. Jerome Deutsch
 Ms. Rosalind Devon
 Florence and Burt Diamond
 Mr. and Mrs. Harold J. Diamond



Medal of Excellence Gala Chairs Edward C. Forst, Terry J. Lundgren, Anne M. Finucane, Brian T. Moynihan, Sanford I. Weill, and Ronald O. Perelman with Honoree Robert K. Kraft (middle)

Hester Diamond
 Dr. and Mrs. Stanley Dicker
 Mrs. Ruth Dickler
 Ms. Constance Difede
 Ms. Carol E. Domina
 Ms. Linda L. D'Onofrio
 Barbara and Thomas Dooley
 Amit and Kalpana Doshi
 Jean and Gordon Douglas
 Drucker Associates
 Mr. and Mrs. John L. Dunn
 Stephen and Judy Dunn
 Mrs. Charles H. Dyson
 William James Earle
 Mr. and Mrs. John Eastman
 In Memory of Mrs. Joan K.
 Easton
 Dr. and Mrs. Colin S. Edwards
 Effective Software Solutions
 Mr. Jay K. Egelberg
 Elan Group
 Mr. and Mrs. George Elvin
 Mrs. Thomas Enders
 Mr. and Mrs. Alan S. Englander
 Mr. and Mrs. Alexander T.
 Ercklentz
 Ms. Gail Erickson
 Peter and Joan Faber
 Ms. Mary Lou Falcone and
 Mr. Nick Zann
 Fiona Morgan Fein
 Norman Feit and
 Shishaldin Hanlen
 In memory of Mrs. Hortense
 Feldblum
 Mr. Arthur F. Ferguson
 Dr. and Mrs. Bernard Ferrari
 Mrs. Roberta Fine
 Susie and Charles Finkel
 The Finucane-Barnicle Family
 Foundation of the Bank of
 America
 Charitable Fund
 Mr. and Mrs. Arthur Fleischer

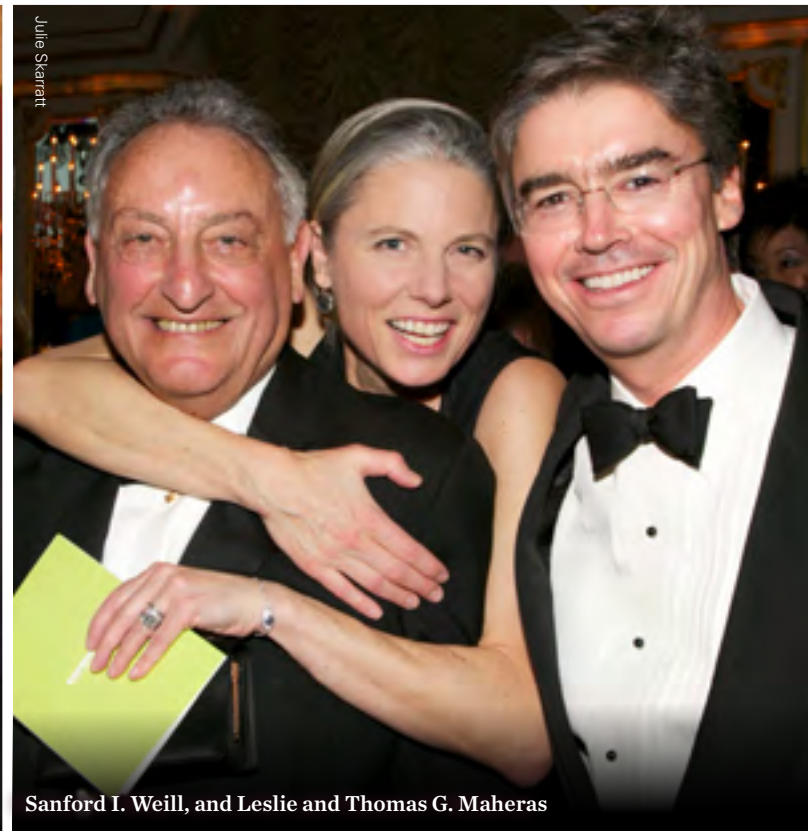
Ms. Barbara G. Fleischman
 Ona and Richard Fleming
 Mrs. Judi Flom
 Mr. and Mrs. Donald Fox
 Andrew J. Frackman and
 Emily Braun
 Mr. Andrew C. Freedman
 Mr. and Mrs. Marvin Freeman
 Ms. Mary Ann Frenzel
 Mr. and Mrs. Edward A.
 Friedman
 Gerald L. and Sheree A.
 Friedman
 Mr. and Mrs. Jeffrey Friedman
 William Friedman Diamonds
 Ltd.
 Patrick Gallagher and
 Robert Watson
 Sally and James Gambrill
 Arlyn and Edward L. Gardner
 Gideon and Sarah Gartner
 Dr. Merwin Geffen and
 Dr. Norman Solomon
 Alexis Gelber and
 Mark Whitaker
 Reverend Carlson Gerdau
 Dr. Claude Ghez
 Mr. Gregory F. Gilmartin
 Jerry Gladstein
 Edythe and Mike Gladstein
 Drs. Jack and Joy Glaser
 Ciril and Suzanne Godec
 Virginia and Martin Gold
 Susan L. Goldfine MD
 Ms. Miriam Goldman
 Patricia and Bernard Goldstein
 Charlotte Gollubier
 I. Michael Goodman and
 Judith Uman
 The Honorable Roy M.
 Goodman
 Mr. Christopher Gorayeb
 Maggi and David Gordon
 Mr. Brian Gorman

Dr. Harold Gotthelf
 Mr. and Mrs. Harry E. Gould Jr.
 Rivka Greenberg
 Mr. Jonathan K. Greenberg and
 Ms. Elizabeth Ely
 Mr. and Mrs. James L.
 Greenwald
 Mr. and Mrs. Mark Gregorio
 Mr. Keith Griffin
 Mr. and Mrs. Mark Grinis
 The Grisham Foundation by
 Carol Hall
 Ms. Jane Gross
 Mrs. Carol Grossman
 The Gardner Grout Foundation
 Mrs. Marit G. Gruson
 Ms. Gunilla N. Haac
 Ms. Nohra Haime
 Carol Hall and Leonard Majzlin
 in honor of Josephine
 Renzulli
 Mimi Halpern
 Ms. Janice M. Hamilton
 Ms. Barbara Hansen
 Dr. Bjorn and Catherine Hanson
 Susan T. Harris
 Dr. Gail Hashimoto
 Kimberly Hastie and
 Timothy Welch
 Ms. Mary Hastings
 Mr. Frank Heller and
 Mr. Christian F. Steiner
 Edward I. Herbst
 Dr. Gemzel A. Hernandez
 Martinez MD
 Marifé Hernandez and Joel Bell
 Terry Stamler Herst in memory
 of Sylvia Fisch Stamler
 Ginsberg
 Mr. and Mrs. Don Hewitt
 Joan and Bill Hickey
 Adria and Donald Hillman
 Ellen and David S. Hirsch

Ms. Susan B. Hirschhorn and
 Mr. Arthur M. Klebanoff
 Ms. Susan E. Hochberg
 Mr. Gary Hodes
 Drs. Ira R. and Ruth W. Hoffman
 Judith M. and Richard S.
 Hoffman
 Pamela J. Hoiles
 Ms. Joan Holmes
 Steven and Lesli Hornstock
 Mr. and Mrs. Frederic K.
 Howard
 Mr. Jerry Howett
 Mr. and Mrs. William R. Huff
 Mr. Timothy Hughes
 Mary and John Hull
 Ms. Atsuko Imamura
 Michael Jozef Israels and
 Maija-Sarmite Jansons
 Human Music and Sound
 Design
 Carol T. Ivanick
 Mr. Andrew Jackson and
 Mr. Dale Michael Lovelock
 Lois A. Jackson DDS
 John Mary Bernard Jacobs
 Foundation
 Marti and Ray Jacobs
 The Nathan P. Jacobs
 Foundation
 Ms. Susan G. Jacoby
 Mr. and Mrs. Morton L.
 Janklow
 Mr. and Mrs. Floyd H. Jayson
 In Memory of Nina and Thomas
 Jensen, Denmark
 Andreas and Nele Jessel
 Mr. Robert D. Jezowski
 Mr. Darrell Jones
 Barbara Haws and
 William Josephson
 JTS Fund at the New York
 Community Trust
 Judy Point Charitable Trust



Julie Skerratt



Julie Skerratt



Chris Lee

Judith and Burton P. Resnick

Sanford I. Weill, and Leslie and Thomas G. Maheras

Clive Gillinson, Michael Nelson, and Sanford I. Weill unveil Breguet's new Lobby clock.

Breguet: Exclusive Timepiece

Carnegie Hall welcomed Breguet as its first Exclusive Timepiece, launching a new partnership guided by the hallmarks of deep historical commitment, innovation, and invention. To mark the occasion, a Breguet clock was unveiled in the Morse Lobby on October 3, prior to the start of the festive Opening Night Gala. The clock, modeled on Breguet's classic 1801 Tourbillon, was the first created by the company for installation in a US building and the first addition to the Carnegie Hall lobby since its 1986 renovation. Finely crafted Breguet clocks were also installed throughout the banquet and public spaces of Carnegie Hall. Breguet joined in the season's opening festivities by generously sponsoring Carnegie Hall's Opening Night Gala Dinner at The Waldorf Astoria.

Elliott Kaback and Patricia Woodard
Diana J. Kalman
Mr. and Mrs. Eric Kaltman
Leonard and Alice Kandell
Dr. Sylvia Karasu MD
Karma Foundation
Ms. Sharon Karmazin
Joseph and Audrey Kartiganer
Elliot and Adrienne Katz
Mr. Neil C. Katz
Mr. Stephen C. Kaye
Mr. and Mrs. Earle W. Kazis
Mr. Thomas F. Kearns Jr.
Mr. William S. Keating
Mary and Howard Kelberg
Ms. Gail Kendall
Ms. Kathryn Keneally and Mr. Thomas M. Marshall
Ms. Edythe Kenner
Mr. John H. Kilbourne
Mr. Lewis King
Mr. William Kistler
Lisa Klein and Timothy Kinsella
Dr. Mark M. Klebanov
Mr. and Mrs. Winthrop Knowlton
Dr. June H. Koizumi
Jonathan and Judith Kolker
Timea and Charles Kolozsary
Helen and Jules Kornblau / The Kornblau Family Foundation
Mr. Tyler Korff
Mr. and Mrs. Irwin Kotovskiy
Yelena Kourtei and Alex Zakshanskiy
Sarah and David Kowitz

Mr. Jonathan Kowolik
Daniel and Joan Kram
Caroline and Mark Krentzman
Ms. Alexandra Krofta Jones
Dorothy Kryger
Dorothy and Herbert Kunststadt
Sheldon and Rita Kwiat
Ms. Elissa LaBagnara
Mr. and Mrs. Joseph Lagana
Mr. and Mrs. James Lally
Sheila and Bill Lambert
Mr. and Mrs. Fernand Lamesch
Mr. and Mrs. W. Loeber Landau
Mr. Jonathan Larsen
Henna Ong and Peter D. Lawrence
Ms. Melissa Leapman
Dr. Ben H. Lee
Dorothy Lee and Victor Han
Mr. and Mrs. Robert E. Lee III
Harris I. Lehrner
Ms. Carol Leibenson
Ms. Alexandra Leighton
Mr. and Mrs. Jacques E. Lennon
Kurt F. Leopold
Mr. Kenneth D. Levien and Ms. Debra Torres
Mr. and Mrs. Jerry Levin
Noel Levine
Leslie and Jim Levy
Marcia and William Levy
Mr. William J. Levy
Mr. Dylan H. Lewis
Beth Lieberman MD and Carl Lieberman MD
jpl
Margot and Robert Linton

Arthur D. Little and Jann E. Leeming
Mrs. Joan C. Long
Mr. and Mrs. Sherif Lotfi
Ilene and Edward Lowenthal
Joyce Feinberg Luchtenberg
Lucy Foundation
Lundsten-O'Donnell Advisory Group
Dr. Laura Lustig
Mr. and Mrs. Merritt M. Lutz
Mrs. Maria N. Lyras
Mr. and Mrs. W. Loeber Landau
Mr. Jonathan Larsen
Henna Ong and Peter D. Lawrence
Ms. Melissa Leapman
Dr. Ben H. Lee
Dorothy Lee and Victor Han
Mr. and Mrs. Robert E. Lee III
Harris I. Lehrner
Ms. Carol Leibenson
Ms. Alexandra Leighton
Mr. and Mrs. Jacques E. Lennon
Kurt F. Leopold
Mr. Kenneth D. Levien and Ms. Debra Torres
Mr. and Mrs. Jerry Levin
Noel Levine
Leslie and Jim Levy
Marcia and William Levy
Mr. William J. Levy
Mr. Dylan H. Lewis
Beth Lieberman MD and Carl Lieberman MD
jpl
Margot and Robert Linton

Fredericks Michael and Company
Edward J. and Adrienne Miller
Mr. and Mrs. Everett B. Miller III
Irwin and Frances Miller
Mr. and Mrs. Jonathan Miller
Mr. and Mrs. Robert E. Mims
Mr. and Mrs. Gerald Mintz
Sandra and Lowell Mintz
Mr. and Mrs. Steven Miron
The Y. H. Mirzhoeff & Sons Foundation
Mr. Eben Moglen
Karl Moller
Teresa and Martin Monas in honor of Barbara Cook
Ms. Marilyn Monter
Sasha and Daniel Montilla
Ms. Barbara Moore
Cathy Carr and William Moran Jr.
Paula and Gerard Munera Foundation
Ms. Dorothy E. Musche
Paul S. Nadler Family Charitable Trust
Mr. Stefano Natella
Mr. and Mrs. George A. Needham
Margaret and Richard Neimeth
Mr. and Mrs. Mitchell J. Nelson
Mrs. Raphael Nenner
In Memory of Gabor Neumann
Ms. Susanna Neumann
William and Julianna Obeid
Mr. Charles O'Byrne
Mr. John E. Oden
Ms. Dianne O'Donnell
Mr. and Mrs. Harold H. Oertell

Mr. and Mrs. Kobi Offer
Daniel and Rebecca Okrent
Mr. Morris A. Orden
Dr. Anthony Paciello and Dr. Dianne Rose
Mrs. Hannah C. Pakula
Michael and Gabrielle Palitz
Mrs. Frank Papp
Reverend and Mrs. Everett C. Parker
Lori and Lee Parks
The Patterson Family
James Patterson
Mr. and Mrs. Adolfo Patron
Rita and Daniel Paul
David B. Pearce MD
Mrs. Stephen M. Peck
Arnold S. Penner Esq. and Madaleine Berley
Ms. Debra G. Perelman and Mr. Gideon Gil
The AJ Perella Foundation
Barbara and Louis Perlmutter
Jerilyn and Brian Perman
Ms. Antonia P. Pew
Scott and Judy Phares
Evan Picoult
Penny and Claudio Pincus
Burton Yale Pines and Helene Brenner
John A. Pirovano
Mr. Rene Plessner
Mr. and Mrs. James Pohlman
Judy Point Charitable Trust
In memory of Marion Pokoik Dick
Ms. Tara E. Polen
Ms. M. Terri Poli and Mr. J. Craig Weakley
Mindy Pollack

Mrs. Sidney J. Pollack
Mr. Robert Poulos
Dr. Robert Press
Mrs. Jessie Hunter Price
Mr. Josh Prottas
Mark Ptashne and Lucy Gordon
Dr. Rosemary Purrazzella and Dr. Marc Rosenblum
Stephen S. Rabinowitz Esq.
Jack Radgowski
Mr. Kirk August Radke
William Raff / Mizuho USA Foundation
Charles J. Raubicheck and Ann S. Macdonald
Gregory Reed and Michael Zorich
Dana and Richard Reimer
Ms. Catherine A. Rein
Ms. Denice Helman Rein
The Karl F. Reuling Fund
Mrs. Sibylle Reyniak
John L. McHugh Foundation, Inc. and Mrs. Stanley B. Rich
Allan and Reda R. Riley Foundation
Mr. Chretien B. Risley
Nataly and Toby Ritter
The Robbins Family Foundation Inc.
Pilar and Stephen Robert
Mr. and Mrs. Donald Roberts
Ms. Connie Kaiserman Robinson and Mr. Steven Robinson
Sondra Kurtin Robinson
Rockrose Development Corporation
Mr. and Mrs. Gerald T. Rolfe
Mr. and Mrs. Kenneth Roman
Mr. and Mrs. Joseph Rosen
Susan Pinsky and Marc Rosen
Mr. James H. Rosenfield

James R. and Frederica Rosenfield Foundation
 Judith and Michael Rosenthal
 Barbara and Alan Rosenzweig
 Mitsuko and David Rosinus
 Clara and Irwin Roth
 Mr. Richard Roth
 Michael and Juliet Rubenstein
 Jacqueline and George Rubin
 Mark and Tracy Rudd
 Mr. Eric C. Rudin
 Mr. and Mrs. William M. Rudolf
 Jon Rupp
 In Memory of Julian Autrey
 Mr. and Mrs. William J. Sales
 Dr. and Mrs. Eduardo A. Salvati
 Alan Salz and Brad Whitehurst
 Sarina Sassoon Sanandaji and Kasra Sanandaji
 Mr. and Mrs. Suresh Sani
 Mr. Ray Santelises
 Scherzer International
 Mr. Antoine Schetritt
 The S.H. and Helen R. Scheuer Family Foundation
 Mr. and Mrs. Gerhard Schulmeyer
 Mr. Béla Schwartz and Ms. June Zimmerman
 Joan C. Schwartz
 Philanthropic Fund
 Ms. Barbara A. Scott and Ms. Shirley E. Scott
 Mr. and Mrs. William C. Scott
 Rhoda and Louis Scovell Charitable Foundation Fund
 Mr. and Mrs. Herbert L. Seegal
 Janet Z. Segal and Family
 Mrs. Richard Selle
 Barbara and Kenneth Seplow
 Vivian Serota
 Dr. Wales R. Shao
 Mr. Stephen J. Shapiro and Dr. Amy Attas
 Mr. David Sheehan and Ms. Mikelynn Salthouse
 Irene and Fred Shen
 Marion and William Shulevitz
 Mr. and Mrs. Marvin Shulsky
 Michael and Seren Shvo
 Mr. David M. Siegel and Ms. Dana Matsushita

Mr. and Mrs. Lawrence Simon
 Mark E. and Roberta K. Simon
 Mr. Arun Sinha
 Mr. and Mrs. James B. Sitrick
 Katherine and Kenneth Snelson
 Mr. and Mrs. Gilbert L. Snyder
 Denise R. Sobel
 Mr. Jason Soloway
 Mr. Jeffrey B. Soref
 Mr. and Mrs. Paul Soros
 Mrs. Colleen Spencer
 Mr. and Mrs. Joseph M. Stafford
 Mr. and Mrs. Arthur Stainman
 Dr. Axel Stawski
 Sissy and Gary Stein
 Leonore and Walter Stern
 Linda B. Stern
 Mr. and Mrs. Trevor Stewart
 Mr. and Mrs. Neal R. Stoll
 Mr. and Mrs. Dennis Swanson
 Mr. and Mrs. I. David Swawite
 Gloria and Philip Talkow
 Mr. and Mrs. David J. Tananbaum
 Mr. and Mrs. Laurence Tarica
 Mr. and Mrs. Henry Taub
 Mr. and Mrs. Willard B. Taylor
 Priscilla and Jerome Teich
 Mr. and Mrs. Barron Tenny
 Elise C. and Marvin B. Tepper
 Mr. and Mrs. Petr A. Thorson
 Mr. Michael Tomasko IV
 Mr. Michael Tubbs
 Richard Tucker Music Foundation
 Gerald F. Tucci
 Ms. Helen Sonnenberg Tucker
 Gil Turchin and Indigo Lindsey Turner
 Mr. and Mrs. Jean-Paul Valles
 Mr. and Mrs. William J. vanden Heuvel
 Christine Vanderlinden and Eric Spicer
 Ms. Nancy F. Vardakis
 Matt and Mary Vertin
 Mr. and Mrs. Raymond W. Vickers
 The Rudolph and Lentilhon G. von Fluegge Foundation Inc.

Susan Walker and Harry Salwen
 Ms. Nora Ann Wallace and Mr. Jack Nusbaum
 Terilynn and Jeff Walsh
 Mrs. Cecille Wasserman
 Ms. Johanna Weber
 Evelene Wechsler
 Rebecca and William Weeks
 Sandra and George Weiksner
 Marie-Hélène Weill
 James L. Weinberg
 In Memory of Dr. Howard Weiner
 In Honor of Phyllis Lifton Weiner
 Miss Regine Weiner
 Mr. and Mrs. Martin S. Weinstein
 Mr. and Mrs. Stephen H. Weinstein
 Max Weintraub
 Linda Weiss
 Mr. and Mrs. Peter Weiss
 Ms. Gayle W. Welling
 Joan Weltz and Arthur Field
 Phyllis and Ira Wender
 Mr. Peter Wexler
 Mr. and Mrs. Robert R. Wiener
 Mr. and Mrs. Mitchell Williams
 Mr. Russell E. Windsor
 Mr. Richard M. Winn III
 Mr. and Mrs. Irving M. Wolbrom
 Jacqueline and Cary Wolf
 Mary C. Wolf
 The Honorable and Mrs. Carl S. Wolfson
 James M. Wolin
 Mrs. Ruth Wright
 Mr. and Dr. Leonard H. Yablon
 Mr. George M. Yeager
 Ms. Shirley Young
 Alice F. Yurke and Robert H. Davis Jr.
 Mr. and Mrs. Mark Zand
 Ms. Gloria Zeche
 Merryl and Charles Zegar
 Anonymous (24)

Sharing the Gift of Music in a Time of Crisis

Events like Hurricane Sandy offered all of us a reminder of the strength and importance of our communities. During that difficult time, Carnegie Hall offered free tickets to New Yorkers who had been hit by the storm as well as the volunteers and healthcare professionals who worked tirelessly to help those in need. Partnering with Governor Cuomo's office and numerous New York City agencies, Carnegie Hall's Department of Government Relations organized free ticket distribution through organizations working on relief efforts. Our hope was that the act of attending a concert might provide New Yorkers with a chance to come together, as well as a brief respite from the hardships that the storm inflicted.

Free tickets were also distributed through Carnegie Hall's website. A Hurricane Sandy link on the home page directed individuals to ticket request details. Requests came in from across the city and state—from a Broad Channel family who lost 50% of their home, to a heroic volunteer who led a relief group that regularly climbed 23 flights of stairs to bring hot food to Far Rockaway seniors marooned atop high-rise buildings without power.

Corporations

Guardian

\$100,000 and above

Bank of America
 Bank of Tokyo-Mitsubishi UFJ, Ltd.
 Breguet
 Deloitte LLP
 Ernst & Young LLP
 KPMG LLP
 McGraw Hill Financial
 Mercantil Servicios Financieros
 Roche
 Sony Corporation of America
 Target
 United

\$50,000 to \$99,999

DeWitt Stern Group, Inc.
 MetLife Foundation
 Petrobras

\$30,000 to \$49,999

Ameriprise Financial
 Aon Risk Services
 Cartier
 Mitsubishi Corporation (Americas)
 Toyota
 The Walt Disney Company
 Wells Fargo

Pacesetter

\$20,000 to \$29,999

The Estée Lauder Companies Inc.
 Pfizer Inc.



Carnegie Hall salutes Bank of America, proud season sponsor of the 2012–2013 season.

Guarantor

\$12,000 to \$19,999

BBDO Worldwide
 Credit Suisse
 UBS

Benefactor

\$6,000 to \$11,999

Deutsche Grammophon & Decca Classics, U.S.
 First Eagle Investment Management Foundation
 ITOCHU International Inc.
 Johnson & Johnson
 Morgan Stanley
 Sumitomo Corporation of America
 Xerox Corporation

Patron

\$2,500 to \$5,999

Colgate-Palmolive Company
 J. C. C. Fund of the Japanese Chamber of Commerce and Industry of New York
 Mercer Health & Benefits
 Mitsubishi Heavy Industries America, Inc.
 Sojitz Corporation of America

Sustainer

\$2,499 and below

Nippon Steel & Sumitomo Metal U.S.A., Inc.
 Richloom Fabrics Group, Inc.
 SD&A Teleservices, Inc.

Public Support

New York City Department of Cultural Affairs
 New York City Council
 Office of the Manhattan Borough President

New York City Department of Education
 New York City Young Men's Initiative
 New York City Department of Probation
 New York City Department of Homeless Services
 New York City Department for the Aging

New York State Council on the Arts

National Endowment for the Arts
 United States Department of Education
 National Endowment for the Humanities
 United States Department of State

Consulate General of Brazil



Kenneth J. and Ann Bialkin



Katherine and Stephen R. Howe



Robert K. Kraft and Ricki Noel Lander

Special Events

Wednesday, October 3, 2012

Carnegie Hall's Opening Night Gala

Chicago Symphony Orchestra
Riccardo Muti, Music Director and Conductor
Rosa Feola, Soprano
Antonio Giovannini, Countertenor
Audun Iversen, Baritone
Chicago Symphony Chorus
Duain Wolfe, Director
Chicago Children's Choir
Josephine Lee, Director

Honorary Chairman

The Honorable Rahm Emanuel
Mayor of the City of Chicago

Gala Chairmen

Mrs. Mercedes T. Bass
Mr. and Mrs. Oscar de la Renta
Mrs. Julio Mario Santo Domingo

Gala Co-Chairmen

Mr. and Mrs. Henry R. Kravis
Mr. and Mrs. Peter W. May
Mr. and Mrs. Burton P. Resnick
Ann Ziff

Corporate Chairman

Mr. Dennis M. Nally,
Chairman, PricewaterhouseCoopers
International Ltd.

Opening Night Gala Lead Sponsor for the ninth Consecutive Season

PwC

Opening Night Gala Dinner Sponsor and Carnegie Hall's Exclusive Timepiece

Breguet

Gala Journal Sponsor

Macy's and Bloomingdale's

Special thanks to *Town & Country* magazine

Thursday, June 13, 2013

Medal of Excellence Gala Honoring Robert K. Kraft Founder, Chairman and CEO, The Kraft Group

Musical Performance

Sir Elton John

Master of Ceremonies

Scott Pelley

Managing Editor, *CBS Evening News*
Correspondent, *60 Minutes*

Gala Chairs

Sanford I. Weill
Chairman Emeritus
Citigroup
Chairman, Carnegie Hall

Brian T. Moynihan

CEO
Bank of America

Anne M. Finucane

Global Strategy and Marketing Officer
Bank of America
Trustee, Carnegie Hall

Jerral W. Jones

Owner, President and General Manager
Dallas Cowboys

Edward C. Forst

Senior Advisor
Fenway Partners LLC
Treasurer, Carnegie Hall

Jack Connors, Jr.

Chairman Emeritus
Hill, Holliday, Connors, Cosmopolos, Inc.

Ronald O. Perelman

Chairman and CEO
MacAndrews & Forbes Holdings Inc.
Vice Chairman, Carnegie Hall

Terry J. Lundgren

Chairman, President and CEO
Macy's, Inc.
Trustee, Carnegie Hall

Lowell C. McAdam

Chairman and CEO
Verizon

Co-Chairs

Stephen J. Bisciotti
Owner, Baltimore Ravens

Debra and Leon Black

Apollo Global Management

Bradley J. Butwin

O'Melveny & Myers LLP

CBS Corporation

John F. Fish

Chairman and Chief Executive Officer,
Suffolk Construction Company

Carolyn and Peter S. Lynch

Phyllis and William Mack

Optum

Michael Rubin
Executive Chairman, Fanatics

Elizabeth and Henry T. Segerstrom

Viacom

Williams & Connolly LLP

Poju and Anita Zabudowicz

Chairman, Tamares Group



Oscar de la Renta and Sarah Jessica Parker



Annette de la Renta and Beatrice Santo Domingo



Clive Gillinson, Andre Tippett, Jerod Mayo, Robert K. Kraft, Sir Elton John, Vince Wilfork, Tom Brady, and Sanford I. Weill



Ann Ziff, Tim Jessell, and Renée Fleming

The Andrew Carnegie Society

The Andrew Carnegie Society honors donors who have made leadership gifts to support the restoration, renovation, and expansion of Carnegie Hall, and to augment the endowment fund in support of artistic programming and music education.

\$10,000,000 or more

City of New York
Ronald O. Perelman Family Foundation
Judith and Burton P. Resnick
State of New York
Joan and Sanford I. Weill
Judy and Arthur Zankel
Estate of Arthur Zankel

\$5,000,000 to \$9,999,999

Mrs. Mercedes T. Bass
Mr. Sid R. Bass
Citi Foundation
Mr. and Mrs. Richard A. Debs
The Honorable and Mrs. Felix G. Rohatyn
Susan and Elihu Rose Foundation
Lily and Edmond J. Safra
Marge and Walter Scheuer and Family
The Starr Foundation
United States Department of Education

\$2,500,000 to \$4,999,999

Linda and Earle S. Altman
Deloitte LLP
The Horace W. Goldsmith Foundation
Hearst Foundations
Mr. and Mrs. Klaus Jacobs
Anna-Maria and Stephen Kellen Foundation
Mr. and Mrs. Robert I. Lipp
Leni and Peter May
Mr. and Mrs. Lester S. Morse Jr.
Mr. and Mrs. William G. Parrett
Mr. William D. Rondina
Mr. S. Donald Sussman
Uris Brothers Foundation, Inc.
Mr. and Mrs. James D. Wolfensohn

\$1,000,000 to \$2,499,999

The Vincent Astor Foundation
Vincent Astor Trust
AT&T
Mr. and Mrs. Ralph M. Baruch
Mr. and Mrs. Kenneth J. Bialkin / Skadden, Arps, Slate, Meagher & Flom
Clarissa and Edgar Bronfman, Jr.
Mr. and Mrs. Nicola Bulgari
J. P. Morgan Chase & Co.
Credit Suisse
Estate of Joanne Toor Cummings
Luella and Martin Davis
Deutsche Bank
The Irene Diamond Fund, Inc.
The Diller-von Furstenberg Family Foundation
Mr. and Mrs. Anthony B. Evnin



Judy Zankel and Norman Benzaquen



Yoko Nagae Ceschina and Valery Gergiev



Sana H. Sabbagh and friend



Robert Spano, Martha Lipp, Osvaldo Golijov, and Robert Lipp



Senator Roy Goodman, Lester Morse, and Elihu Rose

Fomento Cultural Banamex Fund for International Education
 Mr. and Mrs. Gordon P. Getty
 Jean & Julia Goldwurm Memorial Foundation
 Eugene and Emily Grant
 Claudia and Roberto Hernández Ramírez
 Maria Olivia and Jim Judelson
 Gershon Kekst, Kekst and Company, Inc.
 Mark and Anla Cheng Kingdon Foundation
 Bruce and Suzie Kovner
 KPMG LLP
 Mr. and Mrs. Henry R. Kravis
 The Kresge Foundation
 Mr. and Mrs. Terry J. Lundgren
 Macy's and Bloomingdales
 The Marc Haas and Helen Hotze Haas Foundations
 The Marma Foundation Fund for Youth Education
 The Andrew W. Mellon Foundation
 The Ambrose Monell Foundation
 Beth and Joshua Nash
 National Endowment for the Arts
 Natural Heritage Trust
 The Lizabeth and Frank Newman Charitable Foundation
 Pepsi-Cola Company
 John & Louise Reuter Trust
 The Rockefeller Foundation
 Pat and John Rosenwald
 Jack and Susan Rudin, in memory of Lewis Rudin
 The Fan Fox and Leslie R. Samuels Foundation, Inc.
 Mrs. Julio Mario Santo Domingo
 Henry and Elizabeth Segerstrom
 Mr. and Mrs. Arthur T. Shorin
 Mr. and Mrs. Stanley S. Shuman
 Henry Shweid and Margaret Munzika Shweid Trust
 Siemens Corporation
 Mr. and Mrs. A. J. C. Smith
 Sony Corporation of America & Sony Music Entertainment Inc.
 Jerry I. Speyer and Katherine G. Farley

Mr. and Mrs. Isaac Stern
 The Tishman Fund for Education through Technology
 The Alice Tully Foundation
 U.S. Department of Housing and Urban Development
 Verizon Foundation
 Alberto Vilar
 Linda J. Wachner and Warnaco Inc.
 The Weiler Fund
 Mrs. Charles B. Wrightsman
 Judy Francis Zankel
 The Zankel Fund
 Zankel Charitable Lead Trust
 Ann Ziff

\$500,000 to \$999,999

American Express
 Booth Ferris Foundation
 CIBC Oppenheimer
 Charles E. Culpeper Foundation, Inc.
 The Eleanor Naylor Dana Charitable Trust
 George David
 Estate of Mrs. Eugenia Doll
 Ernst & Young LLP
 The Sherman Fairchild Foundation, Inc.
 FleetBoston Financial
 Fribourg Foundation Inc. and Mr. and Mrs. Raphael Recanati
 Estate of Rita L. Gluck
 The Marilyn Horne Foundation
 Mr. and Mrs. Carl C. Icahn
 Carl Jacobs Foundation
 Stella and Robert Jones
 Gilbert and Lena Kaplan
 The J.M. Kaplan Fund, Inc.
 Diane G. Kranz
 Lincoln-Mercury
 Mr. and Mrs. Thomas G. Maheras
 Marsh & McLennan Companies, Inc.
 The McGraw-Hill Companies
 Lauren and J. Ezra Merkin
 Merrill Lynch & Co., Inc.
 Metropolitan Life Foundation
 Mrs. Milton Petrie
 The William Petschek Family

The Pew Memorial Trust
 The Pincus Family Fund
 The Joe Plumeri Foundation
 Laura and John Pomerantz
 PwC
 Mr. and Mrs. Oscar de la Renta
 Rockefeller Brothers Fund
 Phyllis and Charles M. Rosenthal
 Suki and Herman Sandler
 Mr. and Mrs. Peter William Schweitzer
 Dr. and Mrs. Thomas P. Sculco
 The Peter Jay Sharp Foundation
 The Sirius Fund
 Miriam Solovieff
 Estate of Marie Steiner
 Suntory International Corp.
 Viacom Inc.
 Estate of Elisabeth P. Wendell
 Mr. and Mrs. John W. Zick

\$250,000 to \$499,999

Andersen Worldwide
 Automatic Data Processing, Inc. (ADP)
 The Barker Welfare Foundation
 Mr. and Mrs. Norton Belknap
 CBS Inc.
 Cleary, Gottlieb, Steen & Hamilton
 Mr. and Mrs. Paul J. Collins
 The Leonard and Sophie Davis Foundation, Inc.
 Mr. and Mrs. Charles H. Dyson
 Exxon Corporation
 Mr. and Mrs. Zachary Fisher
 Mr. and Mrs. Wolfgang K. Flöttl
 Genatt Associates, Inc.
 The Florence Gould Foundation
 The Armand Hammer Foundation
 The Heckscher Foundation for Children
 IBM Corporation
 Geron P. Johnson Foundation, Inc.
 Addie and Tom Jones
 Helen and Martin Kimmel
 John S. and James L. Knight Foundation
 In memory of David and Nora Leseine
 Bella and Leonard Linden
 Sir Deryck and Lady Maughan

Betty Anne and James R. McManus
 Henry and Lucy Moses Fund, Inc.
 Rupert Murdoch
 News America Publishing, Inc.
 The New York Times Company Foundation, Inc.
 Stavros Niarchos Foundation
 Paramount Communications, Inc.
 Pfizer Inc.
 Philip Morris Companies Inc.
 In memory of Martha and Eva Rautenberg
 Reliance Group Holdings Inc.
 Lloyd E. Rigler and Lawrence E. Deutsch
 Billy Rose Foundation, Inc.
 Jack and Susan Rudin Educational and Scholarship Fund
 May and Samuel Rudin Family Foundation, Inc.
 Estate of Darwin F. Schaub
 S.H. and Helen R. Scheuer Family Foundation, Inc.
 Mr. and Mrs. Constantine Sidamon-Eristoff
 Esther Simon Charitable Trust
 Robert E. Simon Jr.
 In honor of Rudolf G. and Inger-Ma Sonneborn
 Estate of Maria M. Stivelman
 Estate of Lucien Thomson
 Mr. and Mrs. Daniel R. Tishman
 Tobishima Associates, Ltd.-The Stanhope Hotel
 United States Department of State
 United Technologies Corporation / Otis Elevator
 Veronis Suhler Stevenson
 Vivendi Universal
 Craig and Connie Weatherup
 John C. Whitehead
 Mr. and Mrs. Lawrence A. Wien
 Hyman, Mildred, Arthur and Elliot Wiener Family
 Willkie Farr & Gallagher
 Ivy Wu
 Anonymous (1)

\$100,000 to \$249,999

ABD Securities Corporation
 AECOM
 The Agvar Fund
 Alcoa Foundation
 ARCO Foundation
 A.S.M. Mechanical Systems / Richard Minieri
 Ilse and Hans J. Baer
 In memory of Max and Hilde Baer
 The Bank of New York
 Arthur and Diane Belfer
 Estate of Charlotte V. Bergen
 The Siegfried and Josephine Bieber Foundation
 The Blackstone Group
 Mr. and Mrs. James A. Block
 Mr. and Mrs. Leonard Block
 The Bodman Foundation
 Mr. and Mrs. Stanley M. Bogen
 The Bristol-Myers Squibb Foundation, Inc.
 Browning-Ferris Industries
 The Burnett Foundation
 Capital Cities / ABC, Inc.
 Carnegie Corporation of New York
 Mary and Michael Carpenter
 Mr. and Mrs. David C. Clapp
 The Constantiner Family
 The Corbett Foundation
 William H. Cosby Jr.
 Barbara and Richard B. Dannenberg
 Mrs. Evelyn Y. Davis
 Evelyn Y. Davis Foundation
 Deerpath Construction Corporation
 Jim and Nancy Dine
 Dresdner Bank North America
 Drexel Burnham Lambert Foundation, Inc.
 E.I. du Pont de Nemours and Company
 Margot T. Egan
 Mr. and Mrs. Alvin H. Einbender
 Henry, Kamran and Frederick Elghanayan
 The Essex House / Nikko Hotels International
 The Fireman Hospitality Group
 Ford Foundation
 Forest Electric Corp.

Susan and Ed Forst / Forst Family Foundation
 Nicholas C. Forstmann
 Theodore J. Forstmann
 Alan and Helene Fortunoff
 Barbara W. Fox-Bordiga, in memory of Lord Bordiga
 Thomas R. and Ingrid L. Frohlich Burns and Family
 The L.W. Frohlich Charitable Trust
 The Fuji Bank Ltd. / Fuji Bank and Trust Co.
 Ira and Leonore S. Gershwin Philanthropic Trust
 Clive and Penny Gillinson
 The Howard Gilman Foundation
 Irving S. Gilmore International Keyboard Festival
 Edythe and Mathew Gladstein
 Mr. Lewis L. Glucksman
 Calla and Ralph Guild
 Philip and Elaine Hampton
 Stanley and Alice Harris
 Daniel P. Hays
 Estate of Dorothy H. Hirshon
 Frederick J. Iseman
 ITT Corporation
 Ittleton Foundation, Inc.
 Mr. Peter Jennings
 Frederico C. Gerdau Johannpeter
 The Robert Wood Johnson Jr. Charitable Trust
 Paul A. Johnston
 Rita J. and Stanley H. Kaplan Family Foundation, Inc.
 In memory of Joseph P. Katz
 Dr. and Mrs. Robert Kavesh
 The Helen and Milton A. Kimmelman Foundation
 Beth and Michael Klein
 Andrea Klepetar-Fallek
 Robert and Myra Kraft
 Sallie Krawcheck and Gary Appel
 Mr. and Mrs. David Lloyd Kreeger
 Michael (Jack) Kugler
 Mr. and Mrs. Eugene M. Lang
 Mrs. William S. Lasdon

The Lauder Foundation / Leonard and Evelyn Lauder Fund and Estée Lauder Inc.
 Robert and Elaine LeBuhn
 The Honorable and Mrs. Samuel J. LeFrak
 Lehman Brothers
 Mr. and Mrs. Henry J. Leir
 Mr. and Mrs. William M. Lese
 Robert H. Lessin and Naida Wharton Lessin
 Blanche and A.L. Levine and The A.L. Levine Foundation, Inc.
 Mr. and Mrs. George Lindemann
 Susan and Martin Lipton
 A.L. and Jennie L. Luria Foundation
 Mr. and Mrs. Michael T. Masin
 William and Helen Mazer
 MBNA America Bank, N.A.
 Mercedes-Benz of North America, Inc.
 Morton and Marlene Meyerson
 Mr. and Mrs. Edward H. Michaelsen
 Kathryn and Gilbert Miller Fund, Inc.
 Minnesota Orchestral Association
 Miyazaki Prefectural Arts Center
 Mobil Foundation, Inc.
 Morgan Stanley
 Nabisco Brands, Inc.
 Natasha Foundation
 Mr. and Mrs. Murray L. Nathan
 New Street Capital
 The New York Community Trust
 New York State Council on the Arts
 Newmont Mining Corporation
 Diane Allen Nixon
 The Octavian Society
 Ogilvy & Mather Worldwide
 Pandick, Inc.
 Ernest E. Pinter Family and David B. Pinter Family
 Paul J. Plishner
 Mr. and Mrs. Shepard P. Pollack
 Polshek Partnership Architects
 Republic National Bank of New York
 Mr. and Mrs. David Rockefeller
 Mr. and Mrs. Laurance S. Rockefeller
 Mr. and Mrs. Daniel Rose
 Mr. and Mrs. Lewis Rudin
 Mrs. Lisabeth E. Schaub

Schlumberger
 In memory of Mrs. Gertrude Schweitzer
 Peter Jay Sharp
 Ruth Collins Sharp
 The Shores Fund
 Jeanne and Herbert Siegel
 Frank Sinatra
 Herbert and Nell Singer
 Mary Jean and Frank P. Smeal Foundation
 Joan and Joel Smilow
 James Thurmond Smithgall
 Evelyn and Donald Spiro
 Mrs. Kathryn Steinberg
 Seymour Sternberg / New York Life Foundation
 Daniel Swarovski Corporations
 In memory of Fran Taubkin
 Mr. and Mrs. Wilmer J. Thomas Jr.
 Laurence A. Tisch and Preston Robert Tisch
 Time Warner Inc.
 Tishman Realty & Construction Co., Inc.
 Miss Alice Tully
 Patricia and Lawrence Weinbach / Unisys Corporation
 Volvo North America Corporation
 Estate of Iva Walke
 Miriam and Ira D. Wallach Foundation
 Bruno Walter Memorial Foundation
 S.G. Warburg
 Warburg Pincus
 Theodore and Renée Weiler Foundation, Inc.
 George and Joyce Wein Foundation
 Westdeutsche Landesbank Girozentrale
 Alice Westphal Trust
 The Helen F. Whitaker Fund
 A.D. Winston Corporation
 Witco Corporation
 Chuck Prince and Peggy Wolff
 Mr. and Mrs. Ying-Sheung Wu
 The Xerox Foundation
 Mr. Uzi Zucker
 Mr. Mortimer B. Zuckerman
 Anonymous (2)

As of June 30, 2013

Named Endowment Funds

Carnegie Hall honors those donors who have established endowment funds in support of concert and education programming.

The Phyllis Barbash Education Fund
 The Judith and Anthony B. Evnin Endowment Fund for Young Artists
 Fomento Cultural Banamex Fund for International Education
 The William Randolph Hearst Endowment for Youth Education and Teacher Training
 The Stella and Robert Jones Fund for Young Artists
 The John S. and James L. Knight Foundation Fund for Music Commissions
 The Marma Foundation Fund for Youth Education
 The Merkin Family Ticket Fund
 The Ruth Morse Fund for Vocal Excellence
 The Edward Prager Endowment Fund for Jazz Artists
 The Jack and Susan Rudin Educational and Scholarship Fund, established in memory of Lewis Rudin
 The Isaac Stern Education Fund
 The S. Donald Sussman Fund for Choral Music, established in memory of Judith Arron and Robert Shaw
 The Tishman Fund for Education through Technology

As of June 30, 2013



Gregory T. Durant (right), Dorothy L. Alpert (left), and Deloitte guests

The Isaac Stern Society of Carnegie Hall

The Isaac Stern Society honors those individuals who have included Carnegie Hall in their long-range financial plans.

Mrs. Robert Allen
 James and Cecilia Alsina
 Isabel Arenas
 Cole Ramsay Bader
 Arlette Levy Baker
 Kathleen Beakley
 Dr. Kurt Becker and Joyce Weinstein
 Norton Belknap
 Davi Bernstein
 Kenneth J. Bialkin
 Jacqueline Hava Bregman
 John Brewer
 Sarita and Alex Broden
 James A. Brophy Jr.
 Lorraine Buch
 Eliane Bukantz
 Marjorie R. Bukzin
 Rochelle Busch
 Marlene Butler-Levine
 Gloria Piechota Cahill
 Castle B. Campbell
 Elizabeth Carr
 Georgia Carrington
 Nora Carrol
 Carol Casey
 Richard B. Casper
 The Reverend Chawanda Charae
 Dr. Gilbert R. Cherrick
 Vivien Ranschburg Clark
 John D. Claypoole
 Charles Edward Cole
 Malcolm F. Crawford
 Mr. and Mrs. Richard A. Debs
 Steve and Connie Delehanty
 David Dorfman
 Domitilia M. dos Santos
 Diane C. Dunne
 Mrs. Charles H. Dyson
 Dr. Joan Eliasoph
 Stanley Epstein
 Ms. Joan Costañó Ferioli
 Stuart M. Fischman
 Barbara W. Fox-Bordiga
 Fredrick and Ruth Freud

Sheilah Purcell Garcia
 Ellen Berland Gibbs
 Louis Ginsberg
 Dorothy S. Girard
 Dalia Carmel Goldstein
 Charles and Jane Goldman
 Adele Mary Grossman
 Jacquelyn C. Harvey
 Alan Hewitt Family
 Dr. G. Hess
 Fred Holtz
 Mr. W. E. H. Hutchison-Hall IV
 Klaus and Karin Jacobs
 William Josephson
 Carolyn Kane
 Theodore D. Karchuta
 Mrs. Greta Katzauer
 Dr. Robert A. Kavesh
 Madeline Kerns
 Lisa C. Kolinsky
 Dr. Jamie Koufman
 June T. Leaman
 Russell V. Lee
 Linda Leven
 Howard K. Lipan
 A. Michael and Ruth C. Lipper
 Catherine Lomuscio
 Archie Mac Gregor
 Thomas G. Maheras
 William M. and Jacqueline Marks
 Charles F. McCown
 Christine McKeon
 Phyllis Melhado
 Michelle G. Miles
 Andrew Miller
 Dena Simone Moss
 Dr. Teresa Mular
 Sarah L. Nolin
 Doris M. Ohlsen
 Emiko Okawa
 Antonia Pew
 Burton Yale Pines and Helene Brenner
 William Raff

William R. Reader, in memory of Lester Bowman
 David L. Rhody
 Susan W. Rose
 Jay and Gladys Rosenthal
 Carol and Daniel Ruffo
 Ralph N. Sansbury
 Karin C. Schiavone
 Patrick J. Schiavone
 Sue A. Schiller
 Steven Schmidt
 Hynda Schneiweiss
 Myrna Schore
 Rosa L. Schupbach
 Carol Shedlin
 Mr. and Mrs. A. J. C. Smith
 Edwin and Ruby Smith
 Dr. and Mrs. Peter Som
 Edward P. Speiran
 Donald Spoto
 Gregory St. John and Gary McKay
 Jan Stuart
 Kenneth Sugarman
 Dr. Stewart Taubkin
 Dr. Gary Thom
 Barbara Tomchin
 Dr. Jeffrey H. Toney
 Donna Jeanne Turnell, in memory of John C. Hamell
 Eleanor Doblin Unger
 Mr. and Mrs. Ronald B. Vogel
 Joan and Sanford I. Weill
 Marshall M. Weinberg
 Neil P. Westreich
 In memory of Rowenna Wight White
 Jeffrey Deane Williams
 Elaine and Irving Wolbrom
 Peter G. Wolff
 Debbie Madesker Wolleman
 Judy Francis Zankel
 Mr. and Mrs. John Zick
 Jonas Zweig
 Anonymous (21)



Dennis and Karen Nally



Marie-Josée and Henry Kravis



Marc Mezvinsky and Chelsea Clinton

Chris Lee



Nicola Bulgari, Henry Haimo, and Veronica Bulgari

Jennifer Taylor



Sydney and Stanley S. Shuman

Julie Skarratt

Committees and Councils

Executive Committee

Chair

Sanford I. Weill

Committee

Mercedes T. Bass
Kenneth J. Bialkin
Clarissa Alcock Bronfman
Richard A. Debs
Edward C. Forst
Klaus Jacobs
Sallie L. Krawcheck
Terry J. Lundgren
Thomas G. Maheras
Peter W. May
Joshua L. Nash
Ronald O. Perelman
Laura H. Pomerantz
Burton P. Resnick
S. Donald Sussman

Audit Committee

Chair

John W. Zick

Committee

Gregory T. Durant
Stephen R. Howe Jr.
Dennis M. Nally
William G. Parrett

Building Committee

Chair

Burton P. Resnick

Committee

Edward C. Forst
Clive Gillinson
Klaus Jacobs

Nominating Committee

Chair

Peter W. May

Committee

Mercedes T. Bass
Clarissa Alcock Bronfman
Sallie L. Krawcheck
Joshua L. Nash
Laura H. Pomerantz
Sana H. Sabbagh
Stanley S. Shuman

Development Committee

Chair

Thomas G. Maheras

Development Subcommittees

Corporate Leadership Committee

Chair

Harold McGraw III

Committee

Gregory T. Durant
Stephen R. Howe Jr.
Sallie L. Krawcheck
Terry J. Lundgren
Thomas G. Maheras
Dennis M. Nally
Pamela Jane Newman
William G. Parrett

The Notables Committee

Co-Chairs

Cody Franchetti
Daniel Montilla
Jimmy Zankel

The Notables Executive Committee

Committee

Carrie Cloud
Mary Wible Vertin

The Notables Steering Committee

Wes Anderson
Joshua Bell
James G. Brooks Jr.
Ryan Brown
Veronica Bulgari
Soraya Darabi
Caroline Rocco Dennis
Alexander Goldberg
Brian Gorman
Kimberly T. Hastie
Adriana Herrera
Jamie Johnson
Jared Kushner
Dylan Hale Lewis
Audra McDonald
Nico Muhly
Mark Ronson
Christin Barringer Rueger
Sarina Sassoon Sanandaji
Duncan Sheik
Jason Soloway
Amy Tarr

Patron Council

Chair

Suki Sandler

Committee

Norton Belknap
Robert W. Jones
Elaine LeBuhn
Robert LeBuhn
Tess Mateo
Janet W. Prindle
James H. Rosenfield
Cynthia D. Sculco
Charles J. Seidler



Linda Nelson, Timmy Nelson, Stuart Nelson, Gabriel Kahane, Daniel Montilla, Adriana Herrera, and Alexander Goldberg

Chris Lee

Paul J. Sekhri
Kathryn Steinberg
Vera Stern
James B. Stewart Jr.
Douglas D. Thomas
Neil P. Westreich

Real Estate Council

Co-Chairs

Earle S. Altman
Louis S. Brause
Robert Kaufman
Joel Leitner
Lester S. Morse Jr.
Burton P. Resnick
Larry A. Silverstein

Membership Committee

Kyle Warner Blackmon
David Brause
Brian Gorman
Stephanie Goto
Josh Prottas
Jonathan Resnick
Gregg L. Schenker
David S. Winter

Special Events Committee

Chair

Laura H. Pomerantz

Committee

Mickey Beyer
Clarissa Alcock Bronfman
Judith W. Evnin
Arlene Genatt
Katya Gorbatiouk
Sharon King Hoge
Linda M. Lindenbaum
Leni May
Dara Perl binder

Joan Pickett
Judith B. Resnick
Sydney R. Shuman
Vera Stern
Adrienne Vittadini
Joan H. Weill

Studio Towers Renovation Project: Fundraising Committee

Co-Chairs

Peter W. May
Burton P. Resnick

Committee

Clive Gillinson
Thomas G. Maheras
Joshua L. Nash
Laura H. Pomerantz

Finance and Operations Committee

Co-Chairs

Edward C. Forst
William G. Parrett

Committee

Gregory T. Durant
Klaus Jacobs
Gilbert Kaplan
Robert I. Lipp
Thomas G. Maheras
Burton P. Resnick
Stanley S. Shuman
A. J. C. Smith

Investment Committee

Co-Chairs

Joshua L. Nash
S. Donald Sussman

Committee

Richard A. Debs
Edward C. Forst (ex officio)
Robert W. Jones
Thomas G. Maheras
Frank N. Newman
Charles M. Rosenthal

The Weill Music Institute Advisory Council

Co-Chairs

Yo-Yo Ma
Joan H. Weill

Committee

Emanuel Ax
Eric Booth
Judith W. Evnin
Edward C. Forst (ex officio)
Valery Gergiev
Willie L. Hill Jr.
Judith Jamison
Lang Lang
Joseph Polisi
Hunter Rawlings III
Susan W. Rose
Thomas J. Schwarz
Larry Scripp
Catherine Stevens
S. Donald Sussman
Dawn Upshaw
Diane Volk
Sanford I. Weill (ex officio)
Judy Francis Zankel

Treasurer's Review



Mark McQueen

Carnegie Hall sustained its strong financial position in fiscal year 2013, providing a solid fiscal foundation for all of the Hall's activities, including many memorable performances by the world's finest artists and visionary education and community programs that reached people of all ages and from all walks of life.

Alongside approximately 170 performances presented by Carnegie Hall on its three stages, the Hall's expansive education and community programs served more than 350,000 people in New York City, nationally, and around the globe last season, playing a central role in fulfilling the institution's commitment to making great music accessible to as many people as possible. A major highlight in fiscal year 2013 was Carnegie Hall's official launch of the first-ever National Youth Orchestra of the United States of America, an inspirational undertaking made wholly possible through new funding from generous supporters. This one-of-a-kind program had impressive personal and musical impact on participants and audiences, receiving positive critical acclaim internationally.

Carnegie Hall's overall operating expenses increased by 7% over the previous year, from \$76.4 million to \$82.1 million, reflecting overall growth of the institution across all programs and activities as well as the addition of major new initiatives such as NYO-USA. On a cash basis, Carnegie Hall balanced its program expenditures with contributions and operating revenues in fiscal year 2013, a season marked by excellent fundraising results, sustained ticket sales for Carnegie Hall presentations, and strong income from rental events. Charitable giving from individuals, corporations, and foundations was at near-record levels in fiscal year 2013. Reflecting a calendar of outstanding special events, overall contributions supporting annual operations for the year stood at \$28.4 million, a 25% increase from fiscal year 2012.

Overall, net assets stood at \$472 million as of June 30, 2013, compared to \$420 million in the previous year. Included in net assets are endowment net assets of \$270 million at year end, compared to \$249 million as of June 30, 2012. Carnegie Hall's diversified investment strategy resulted in a 14% increase, which exceeded the 12% average return of endowments of a similar size per the NACUBO-Commonfund Study of Endowments®. Carnegie Hall's endowment draw supporting operations for fiscal year 2013 was \$14.6 million, compared to \$12.4 million in fiscal year 2012, following the institution's established spending policy, which appropriates a distribution of 6%, calculated on a preceding 20-quarter moving average of the fair market of endowment investments. Carnegie Hall's endowment recorded contributions of \$322,000 in fiscal year 2013 and \$1.9 million in fiscal year 2012.

Carnegie Hall continues to make excellent progress on its comprehensive Studio Towers Renovation Project, now approaching completion in fall 2014. Funding has been pledged to cover the \$230 million overall estimated cost of the project, which will add a new education wing to the landmark building's upper floors while also making meaningful improvements to the Hall's backstage facilities. The renovations are financed by public and private support as well as from a portion of the proceeds from Carnegie Hall's Series 2009 bonds.

Our progress and accomplishments in the past year are directly connected to the generosity and dedication of our donors and audience, the excellent work of the Carnegie Hall staff, and the strong commitment of the entire Carnegie Hall family. We are deeply grateful for this incredible show of support, ensuring that Carnegie Hall continues to flourish, serving and inspiring people for many more decades to come.

Edward C. Forst
Treasurer

A copy of the latest annual financial report filed with the New York Department of Law may be obtained by writing to Attorney General, State of New York, Charities Bureau, 120 Broadway, New York, NY 10271, or Carnegie Hall, 881 Seventh Avenue, New York, NY 10019-3210.

Carnegie Hall files annual financial statements and continuing disclosure statements with the Municipal Securities Rulemaking Board for its bonds issued through The Trust for Cultural Resources of the City of New York (Series 2009A-Carnegie Hall). Information is available at <http://emma.msrb.org>.

Consolidated Balance Sheet

The Carnegie Hall Corporation and The Carnegie Hall Society, Inc.

	June 30, 2013	June 30, 2012
Assets		
Cash and cash equivalents	\$8,463,000	\$13,398,000
Contributions receivable, net	79,278,000	52,300,000
Prepaid expenses and other assets	4,569,000	4,830,000
Funds held by trustee	473,000	36,000
Investments	284,966,000	284,194,000
Fixed assets, net	259,224,000	209,934,000
Total assets	\$636,973,000	\$564,692,000
Liabilities		
Advance sale of tickets and other liabilities	\$23,483,000	\$17,448,000
Accrued pension benefit obligation	12,602,000	13,834,000
Loans payable	128,453,000	112,934,000
Total liabilities	\$164,538,000	\$144,216,000
Net Assets		
Unrestricted	\$50,725,000	\$58,493,000
Temporarily restricted	239,857,000	180,453,000
Permanently restricted	181,853,000	181,530,000
Total net assets	\$472,435,000	\$420,476,000
Total liabilities and net assets	\$636,973,000	\$564,692,000

Administrative Staff

Executive Office

Clive Gillinson
Executive and Artistic Director

Catherine Schaefer
Executive Assistant

Administration

Richard Malenka
Director

Susanna Prough
Manager, Capital Projects

Melissa Monterosso
Coordinator

Building Operations

Hugh McCloy
Chief Engineer

Anthony Regno
Facilities Supervisor

Tamika Reid
Manager

Anthony J. Strano
Director, Security

Event Services

Sarah Zeltzer
Manager

Human Resources

Catherine Casella
Director

Allison Meistrell
HR Generalist

Sharice Y. Joseph
HR Coordinator

Office Services

Stephanie Cole-Jacobs
Office Manager

Wesner Bazin
Coordinator

Juan Juarez
Mail Clerk

Mary Ellen Philbin
Receptionist

Artistic Planning and Operations

Anna Weber
General Manager, Artistic and Operations

Luyuan Xing
Administrative Assistant

Artistic Planning

Jeremy Geffen
Director

Kathy Schuman
Artistic Administrator

Lea Slusher
Director, Artistic Projects

Andrew Byrne
Manager, Festivals and Special Projects

Patrick Sharpe
Associate Director, Artistic Projects

Alicia Jones
Manager, Program Planning

Jennifer Flores
Manager, Artistic Projects

Victoria King
Associate Manager, Artistic Planning

Leslie Leung
Associate Manager, Program Planning

Wendy Magro
Associate Manager, Artistic Projects

DeAnna Sherer
Coordinator

Booking

Elaine Georges
Director

Denise Alfarone
Assistant Director

David Suss
Coordinator

Hall Operations

Joseph Schmaderer
Director of Operations

James A. Gerald
House Manager

Jill Marshall
Jenny Weber
Hall Managers

Peter Huitzacia
Operations Manager

Frank Cardillo
Front of House Manager

Joshua Reynolds
Senior Performance Manager

Thomas Ciganko
Thomas Rogers
Performance Managers

Debby King
Artist Liaison

Rachel S. Davis
Director of Production

Thomas F. Eirman
John Lant
Sheldon Steiger
Production Managers

Leszek Wojcik
Sound Engineer

Steven C. Brody
Operations Coordinator

Zara Ahmad-Post
Coordinator, HMO

Joseph C. Reid
Head Usher

Stage Crew

Ken Beltrone
James Csollany
Carpenters

John Cardinale
John Goodson
Electricians

Dennis O'Connell
Properties Manager

The Academy—a program of Carnegie Hall, The Juilliard School, and the Weill Music Institute

Amy Rhodes
Director

Betsie Becker
Manager, Alumni Projects

Lisa McCullough
Manager, Operations

Deanna Kennett
Education and Community Associate Manager

Development

Susan J. Brady
Director

Kristen Henry
Director, Development Administration

Jamie Santamour
Associate, Development Services

Christopher Stuart
Database Coordinator

Charlotte Daniel
Caroline Ritchie
Administrative Assistants

Corporate Relations and Sponsorships

Dori Fisher
Director

Jonathan Goldman
Manager

Siri Comeau
Joana Kung
Assistants

Foundation Relations

Callie Herzog
Manager

Asim Khan
Julia MacAllister
Associates

Samantha Toy
Administrative Assistant

Government Relations

David Freudenthal
Director

Tomoko Shannon
Jessica Silverman
Associates

Rachele Armstrong
Coordinator

Patron Program

Don Spalding
Director, Patron Program and Membership

Kate Vereb
Assistant Director

Jonathan Slawson
Manager, Notables

Haylee Zirman
Administrative Assistant

Friends

Andrew Rubinstein
Associate Director

Karen Chia
Manager

Salley Kim
Administrative Assistant

Planned Gifts and Special Projects

Carl K. Steffes
Director

Rosemarie Miller
Associate

Brian Huff
Coordinator

Special Events

Ginger Vallen
Director

William Reid
Manager

Hilary Kromnick
Associate

Rachel Pryzgoda
Assistant

Finance

Theodore E. Phillips
Director of Finance

Aris Siliverdis
Manager, Financial Reporting

Alexanne Pemberton
Senior Accountant

Caroline Bonilla
Corporate Accountant

Matthew Eng
Accountant, Society

Maria Loor
Payroll Administrator

Pamela Harris
Analyst, Hall Operations

Tom Huynh
Analyst, Programming

Alvina Yeung
Coordinator

Information Technology and Interactive Services

Aaron Levine
Chief Information Officer

Maria Rio
Administrative Coordinator

Information Systems and New Media

Denise Brooks
Director

James Boncek
Project Manager

Afshin Mahabadi
Associate Director, Information Systems

Simon Basyuk
Manager, Database Administration

Ed Denning
Manager, Business Applications

Lisa Rudnitsky
Application Support Specialist

Interactive Services

Kristin Bufano
Director

Johanna Leal
Manager

Michael Peppler
Web Developer

Information Technology

Bronwen Stine
Director

Tak Lai
Manager, Network Architecture

Nick Calamuso
Senior Technical Analyst

Jason Bitman
Information Technology Engineer

Marketing and Creative Services

Naomi Grabel
Director

Tosaporn Sasitorn
Manager, Retail

Chloë May
Marketing Coordinator, WMI

Elizabeth Laberge
Marketing Assistant

Publishing and Creative Services

Kathleen Schiaparelli
Director

Alex Ammar
Managing Editor

Jay Goodwin
Managing Editor, WMI

J. Adams Holman
Assistant Managing Editor

Carol Ann Cheung
Associate Editor

Bernard Hallstein
Senior Art Director

Cherry Liu
Assistant Art Director

Evelyn Ochoa
Graphics Manager

Michael Mallon
Hiromi Park
Senior Graphic Designers

Kat Hargrave
Graphic Designer

Ross Bonanno
Production Director

Lai Fun Tsui
Production Manager

Marketing and Visitor Services

David Wyeth
Director

Jennifer Hempel
Associate Director, Marketing and Business Development

Craig Zeichner
Associate Director, Special Markets and Copy

Michael Naess
Marketing Manager

Jesse Yang
Marketing Associate

Ashlinn Romagnoli
Manager, Volunteer and Visitor Services

eStrategy

Seamus O'Reilly
Director

Adrienne Stortz
Manager

Nate Bachhuber
Web Content Manager

Jennifer McGoldrick
Associate Producer, E-Mails and Digital Operations

Public Relations

Synneve Carlino
Director

Matthew Carlson
Assistant Director

Tonya Bell
Corinne Zadik
Managers

Samantha Nemeth
Associate

Katlyn Morahan
Coordinator

Veronica Algie
Assistant

Rose Museum and Archives

Gino Francesconi
Museum Director and Archivist

Kathleen Sabogal
Assistant Director, Archives

Robert Hudson
Associate Archivist

Miwa Yokoyama
Digital Project Manager

Ticketing Services

Timmy Wasley
Director

Mike McCarthy
Treasurer

Joseph Coster
Assistant Treasurer

Valeri Olson
Manager, Subscriptions

Jonathan Bradley
Manager, CarnegieCharge

Terri L. Brown
Ticketing Performance Manager

Rayna Bourke
Ticket Services Manager

Kathleen Moran
Patron Desk Manager

Erin Etheridge
Associate, Ticketing Services

Nick Singh
Associate Manager, CarnegieCharge

Tatiana Balaban
Associate, CarnegieCharge

Michael Kumor
Beth Nerich
John Nesbitt
Matthew Poulos
Joseph Smith
Joseph Wittleder
Box Office Representatives

Dennette Dyton
Jasmine Reed
Subscription Representatives

Sebastian Armoza
Claudia Julian
Kavita Mahabir
Antoinette Rogers
CarnegieCharge Representatives

Hillarrie O'Toole
Coordinator, School Partnerships

Community Programs

Ann Gregg
Director

Elizabeth Snodgrass
Manager

Heather Briere
Associate

Elizabeth Ferguson
Associate

Sam Livingston
Coordinator, Education Programs

Weill Music Institute

Sarah Johnson
Director

Jonathan Bradley
Manager, CarnegieCharge

School Programs

Joanna Massey
Director

Amy Kirkland
Manager, Elementary School Programs

Jacqueline Stahlmann
Coordinator, Elementary School Programs

Marie Ortinau
Administrative Assistant, Elementary School Programs

Aaron Siegel
Manager, Secondary and Middle School Programs

Erica Westcott
Associate, Secondary School Programs

Phillip Bravo
Manager, Educational Partnerships

Hillarrie O'Toole
Coordinator, School Partnerships

Community Programs

Ann Gregg
Director

Elizabeth Snodgrass
Manager

Heather Briere
Associate

Elizabeth Ferguson
Associate

Rebecca Hinkle
Associate

Tiffany Ortiz
Administrative Assistant

Artist Training Programs

Douglas Beck
Director

Joseph Soucy
Associate

Elizabeth Gaston
Janet Rucker
Coordinators

Educational Media and Technological

Christopher Amos
Director

Yasmin de Soiza
Manager

Zachary Sulsky
Coordinator

The Richard and Barbara Debs Composer's Chair

Osvaldo Golijov

As of June 30, 2013

Music Ambassadors

Carnegie Hall's corps of 100 friendly and informative Music Ambassadors gave just over 6,120 hours of service as information guides, docents, outreach, and staff support volunteers.

Special thanks to the Music Ambassadors who gave over 80 hours of their time during the 2012–2013 season.

Jeffrey Albert
Andrea Becker
Susan Bein
Betty Burr

Marta Fisch
Joyce Houslin
Genny Imas
Galina Kudinskaya

Beatrice Parides
Lotte Rosenthal
Lee Solomon
Jerome E. Straus

Elaine Usoskin
Rosily Vogelgesang
Florence Weinberg

Gloria Young
Manana Zonen

We salute our Music Ambassadors who gave at least 20 hours during the 2012–2013 season.

Lucille Alonzo
Linda Amster
Jean Bao
Judith Binney
Haruyo Bonnell
Robert Braff
Rita Brandt
Leslie Burgin
La Verne Bruce
Castle Campbell
Judith Cohen
Kathy Dean
Isabelle Dejean
Sandy Dickson
Peter Eaton
Ellen Ensig-Brodsky
Miriam Epstein

Polina Ezrokh
Jacqueline Joyce Fisher
Clarie Freimann
Renata Frenkel
Jerry Gladstein
June Goldberg
Samuel Goldman
Leah Green
Lenore Grossman
Vladimir Gutkin
Pamela Haft
Francine Haselkorn
Ida Henderson
Isabella Itskovich
Sam Joffe
Elliot Kaback
Bebe Kamerling

Ruth Klein
Joan Klitzman
Sandra Kornblit
Esther Lamis
Jean Mascia
Ken McCoy
Kendra McDaniel
Julieann Milling
Frances Needles
Barbara Pollack
Sheila Navarro
Lilya Nirenberg
Alain Ober
Lydia Page
Evgenia Pevzner
Matthew Ramos
Joan Rave

Miriam Pollack Rehmar
Mignon Reik
Stephanie Rosenblatt
Alice Rothblum
Fanny Rybak
Gisele Sercarz
Nadia Shayhet
Barbara Shostak
Emily Simeo
Beverly Stern
Norman Strauss
Agnete Tchen
Constance Testa
Alleyne Toppin
Eve Umeda
Betty Unger
Fumi Usuki

Sheila Vincent
Min Wang
Sabrina Wang
Lillian Wechsler
Sheila Weinstein
Ann Weissmann
Arthur White
Irwin Wolin
Miyako Yamaguchi
Arthur White
Irwin Wolin
Miyako Yamaguchi
Lilia Yanushpolsky
Gloria Young
Xinhan-Jane Zhang

Carnegie Hall's mission is to present extraordinary music and musicians on the three stages of this legendary hall, to bring the transformative power of music to the widest possible audience, to provide visionary education programs, and to foster the future of music through the cultivation of new works, artists, and audiences.



CARNEGIE HALL

881 Seventh Avenue, New York, NY 10019
212-903-9600 | carnegiehall.org

