

CARNEGIE HALL

presents

2009–2010 Annual Report





Dawn Upshaw with the Orchestra of St. Luke's | December 13



Andreas Staier | January 12



Frederica von Stade | April 22

CARNEGIE HALL



Cover photo: Quanzhou Marionette Theater, part of Ancient Paths, Modern Voices: A Festival Celebrating Chinese Culture | October 21
von Stade by Steve J. Sherman, Carnegie Hall exterior © Jeff Goldberger/ISTO

2009–2010 Annual Report

- 2** From the Chairman of the Board
- 4** From the Executive and Artistic Director
- 6** Board of Trustees
- 8** 2009–2010 Concert Season
- 30** Weill Music Institute
- 38** The Academy
- 46** Donors
- 66** Treasurer's Review
- 67** Balance Sheet
- 68** Administrative Staff

Bank of America 
Proud Season Sponsor

Cover: **Quanzhou Marionette Theater**, part of *Ancient Paths, Modern Voices: A Festival Celebrating Chinese Culture* | October 21

From the Chairman of the Board



Dear Friends,

Carnegie Hall's 2009–2010 season was a remarkable success. Despite continued economic uncertainty, the season was filled with unforgettable performances by extraordinary artists that reaffirmed Carnegie Hall's status as one of the world's foremost concert halls. It was also a season characterized by inspirational education and community programs that demonstrated our abiding institutional commitment to enrich people's lives and bring people throughout the world together through music. I sincerely thank you for the special role that you have played in making all that we achieved possible.

Earlier this fall, the National Bureau of Economic Research announced that the recession has ended. The longest financial downturn that the US has endured since World War II—and the most difficult one that most of us have experienced in our lifetimes—is officially over and, in fact, has been for more than a year. Yet, as I think you will agree, even a cursory look around us reveals rather poignantly that this message has not reached everyone. Brighter days certainly lie ahead, but clearly, economic recovery is still a work-in-progress.

Given these tough times, I note with both pride and gratitude that Carnegie Hall has come through the recession with financial rigor and discipline. Thanks to the leadership of Executive and Artistic Director Clive Gillinson and the determined efforts of Carnegie Hall's staff, we have kept a watchful eye on expenses and have explored new ways to generate revenues, all without sacrificing the quality of our concert and education programming in any way. In the process, we have managed to balance our budget for the 15th consecutive season, and have made fantastic progress in restoring our endowment fund to its pre-recession level. This is a great achievement by everyone involved with Carnegie Hall.

The continuity of excellence that you have come to expect from Carnegie Hall is reliant upon a continuity of philanthropy. For that, I want to thank each of you again for standing by our side during this turbulent economic period and for supporting Carnegie Hall so generously. We cannot pursue Carnegie Hall's mission without you, and I hope that the results we have achieved during these past two years instill confidence within you that Carnegie Hall remains a good investment—for culture and for our city. In

turn, I pledge that we will always use your support as you intended, to deliver exemplary artistic and education programs and to do all that we can to make the world a better place through music.

With these thoughts in mind, I want to express a special note of thanks to Marie-Josée and Henry Kravis for their leadership gift last season to underwrite *Ancient Paths, Modern Voices: A Festival Celebrating Chinese Culture*. Thanks to their generosity, Carnegie Hall opened its doors to literally thousands of new concertgoers, welcoming them for exciting voyages of discovery. I also express deep appreciation to each of the many corporations and foundations that supported Carnegie Hall last season, especially Bank of America, which returned as season sponsor for the fifth consecutive year in 2009–2010.

In addition, I gratefully acknowledge our continuing partnerships with the City and State of New York and the US government, as well as the generosity and dedication of Carnegie Hall's Board of Trustees. This past season, we bid farewell to Susan U. Halpern, Esq., and welcomed new trustees Yoko Nagae Ceschina, Robert K. Kraft, Joseph J. Plumeri II, Paul J. Sekhri, Kurt G. Strovink, and Ann Ziff, as well as new Advisory Directors Dame Vivien Duffield and Sherry Liu. Lastly, I note with sadness the passing of trustee James C. Slaughter, who served on the board with grace and distinction for more than a decade, and I express sincere gratitude to Klaus Jacobs, who remains a Vice Chairman of the Board of Trustees but stepped down as Treasurer after nearly 30 years of service, handing that role to Edward C. Forst.

The recent recession has had a profound impact on Carnegie Hall, as it has on each of us individually. In so many ways, Carnegie Hall today is not the same institution it was two years ago. We have learned much from the recession, growing leaner and more efficient because of it, and we have positioned ourselves to take on new challenges and pursue new opportunities with renewed strength and vigor. An exciting journey awaits us, and we look forward to undertaking it with you.

Sincerely,

A handwritten signature in black ink, reading "Sanford I. Weill". The signature is written in a cursive, flowing style.

Sanford I. Weill
Chairman of the Board

From the Executive and Artistic Director



Dear Friends,

With a major international festival celebrating Chinese culture, collaborations with many of the world's most extraordinary artists and ensembles, and adventurous programs that offered extensive journeys of discovery for our concertgoers, Carnegie Hall's 2009–2010 season reflected our institution's longstanding commitment to both artistic excellence and the best in live musical performance, as well as our belief in the power of partnership and teamwork.

In all of our work, we continue to build on the remarkable history and traditions of Carnegie Hall while also defining the role that the Hall can play in the 21st century. Increasingly, our reach has been extended through new partnerships with leading institutions in New York City and beyond, enabling us to develop projects that no institution could ever aspire to achieve alone. Ultimately, our aim is to create musical programming that sparks curiosity, engages, and inspires—whether in the concert hall or elsewhere in the community, or through our extensive education programs. Alongside these aspirations, we seek to place music at the center of people's lives, serving diverse audiences in New York City, across the country, and around the world. The 2009–2010 season was certainly no exception, with more than 170 presentations on the Hall's three stages.

Among our journeys last season, perhaps none was as distinctive as *Ancient Paths, Modern Voices: A Festival Celebrating Chinese Culture*, a varied collection of performances and events that transported us halfway around the globe. China's long and rich cultural heritage,

paired with its equally dynamic contemporary arts scene, provided our inspiration. As China continues to play an increasingly central role in our global society, we hoped the three-week festival, encompassing different musical genres and the whole spectrum of the arts, would serve as a launching point for our audiences' future explorations, encouraging deeper understanding and greater curiosity about this fascinating country.

We were also captivated by an eclectic *Perspectives* series, created by the trailblazing Kronos Quartet; a month of concerts exploring the energetic and complex works of Louis Andriessen, holder of The Richard and Barbara Debs Composer's Chair at Carnegie Hall; celebrations of Pierre Boulez's 85th birthday; performances by Valery Gergiev and the Mariinsky Orchestra of epic works by Hector Berlioz; and special commemorations of major Chopin and Schumann anniversaries with Maurizio Pollini and Emanuel Ax. These events represent a mere handful of highlights from a year of incredible performances that spanned the worlds of classical, jazz, pop, and world music.

In the area of education, Carnegie Hall's Weill Music Institute (WMI) ensured that, even in tough economic times, there were accessible ways for more than 115,000 people of all ages and different walks of life to engage with great music through programs designed for families, students, educators, professional musicians, and the general public. In particular, WMI expanded its community programming last season, creating greater opportunities for people throughout the city to interact with high-quality performances and workshops for free, at a time when there is a greater need for this than ever.

Completing its fourth year, The Academy—a program of Carnegie Hall, The Juilliard School, and the Weill Music Institute in partnership with the New York City Department of Education—has greatly expanded the training opportunities offered to gifted young professional musicians. The program has continued to flourish, equipping a new generation of artists with the many tools needed to develop musical careers that are meaningful, relevant, and fulfilling, while also offering a new model for providing musical expertise and inspiration within our public schools.

As music lovers, we all understand that great music can be transformative, and we embrace the potential of the arts to make a difference in people's lives. In a year when the worldwide financial landscape was incredibly challenging, I could not be more proud of Carnegie Hall's entire extended family—artists, concertgoers, trustees, supporters, volunteers, and staff—for staying true to our institution's mission, never compromising on quality or vision, and, in fact, increasing the scope of our service. We are immensely grateful for your collective resourcefulness and dedication, and we sincerely thank you for your generous support.

With all best wishes,

Clive Gillinson

Board of Trustees

Officers

Sanford I. Weill,
Chairman

Klaus Jacobs,
Vice Chairman and Treasurer

Mercedes T. Bass,
Vice Chairman

Clarissa Alcock Bronfman,
Vice Chairman

Peter W. May,
Vice Chairman

Burton P. Resnick,
Vice Chairman

Kenneth J. Bialkin,
Secretary

Edward C. Forst,
Treasurer-Elect

Clive Gillinson,
Executive and Artistic Director

Chairmen Emeriti

Richard A. Debs
James D. Wolfensohn

Trustees

Martina Arroyo
Emanuel Ax
Mercedes T. Bass
Norton Belknap
Kenneth J. Bialkin
Ronald E. Blaylock
Clarissa Alcock Bronfman
Nicola Bulgari

Yoko Nagae Ceschina
Richard A. Debs
Gregory T. Durant
Judith W. Evnin
Anne M. Finucane
Renée Fleming
Edward C. Forst
Marina K. French
Clive Gillinson
The Honorable
Roy M. Goodman
Marilyn Horne
Stephen R. Howe Jr.
Frederick J. Iseman
Klaus Jacobs
Robert W. Jones
Gilbert Kaplan
Mark E. Kingdon
Robert K. Kraft
Sallie L. Krawcheck
Lang Lang
Bella L. Linden
Robert I. Lipp
Terry J. Lundgren
Yo-Yo Ma
Thomas G. Maheras
Peter W. May
Audra McDonald
Harold McGraw III
Lester S. Morse Jr.

Dennis M. Nally
Joshua L. Nash
Frank N. Newman
Jessye Norman
William G. Parrett
Ronald O. Perelman
Joseph J. Plumeri II
Laura H. Pomerantz
Oscar de la Renta
Burton P. Resnick
Judith Rodin
William D. Rondina
Susan W. Rose
Suki Sandler
Dr. Thomas P. Sculco
Henry T. Segerstrom
Paul J. Sekhri
Stanley S. Shuman
A. J. C. Smith
Sir Howard Stringer
Kurt G. Strovink
S. Donald Sussman
Linda J. Wachner
Sanford I. Weill
Lawrence A. Weinbach
James D. Wolfensohn
Judy Francis Zankel
John W. Zick
Ann Ziff

Trustee Fellow

Robert F. Arning

Advisory Directors

Dame Vivien Duffield
Sherry Liu

International Council

Kotaro Ono

Honorary Trustees

Ralph M. Baruch
Pierre Boulez
Roberta Peters
The Honorable
Felix G. Rohatyn
George T. Wein

Ex Officio Trustees

Michael R. Bloomberg,
*Mayor of the City
of New York*

Christine C. Quinn,
Speaker, New York City Council

Scott M. Stringer,
Manhattan Borough President

Kate D. Levin,
*Commissioner, New York City
Department of Cultural Affairs*

As of June 30, 2010



Board of Trustees

Row 1: Thomas G. Maheras, Judy Francis Zankel, Mercedes T. Bass, Sanford I. Weill, Anne M. Finucane, Clive Gillinson, The Honorable Roy M. Goodman

Row 2: Marina K. French, William G. Parrett, Joshua L. Nash, Robert W. Jones, Nicola Bulgari, Honorary Trustee George T. Wein

Row 3: Jessye Norman, John W. Zick, Martina Arroyo, Judith W. Evnin, Terry J. Lundgren, Trustee Fellow Robert F. Arning

Row 4: A. J. C. Smith, Paul J. Sekhri, Gregory T. Durant, Lawrence A. Weinbach, Norton Belknap, Ann Ziff

Row 5: Lester S. Morse Jr., James D. Wolfensohn, Stanley S. Shuman, Klaus Jacobs, Dr. Thomas P. Sculco, Edward C. Forst

Row 6: Susan W. Rose, Frank N. Newman, Gilbert Kaplan, Henry T. Segerstrom, Kenneth J. Bialkin

Row 7: Laura H. Pomerantz, Oscar de la Renta, Burton P. Resnick

Standing (top to bottom): Ronald E. Blaylock, Mark E. Kingdon, Kurt G. Strovink, Manhattan Borough President Scott M. Stringer

Missing from photograph: Trustees Emanuel Ax, Clarissa Alcock Bronfman, Yoko Nagae Ceschina, Richard A. Debs, Renée Fleming, Marilyn Horne, Stephen R. Howe Jr., Frederick J. Iseman, Robert K. Kraft, Sallie L. Krawcheck, Lang Lang, Bella L. Linden, Robert I. Lipp, Yo-Yo Ma, Peter W. May, Audra McDonald, Harold McGraw III, Dennis M. Nally, Ronald O. Perelman, Joseph J. Plumeri II, Judith Rodin, William D. Rondina, Suki Sandler, Sir Howard Stringer, S. Donald Sussman, Linda J. Wachner; Ex Officio Trustees Mayor Michael R. Bloomberg, City Council Speaker Christine C. Quinn, Department of Cultural Affairs Commissioner Kate D. Levin; Honorary Trustees Ralph M. Baruch, Pierre Boulez, Roberta Peters, The Honorable Felix G. Rohatyn

Carnegie Hall is owned by the City of New York, and its operation is made possible, in part, by public funds provided through the New York City Department of Cultural Affairs.

2009–2010 Concert Season

A Legacy of Discovery

For all the history and tradition surrounding it, Carnegie Hall is, and always has been, about discovery. In its early years, it introduced the United States to new works by Tchaikovsky and Dvořák, Mahler and Strauss. Over the last decade, New Yorkers have become familiar with David Byrne's distinctive art rock and Caetano Veloso's Brazilian *tropicalismo*, Youssou N'Dour's Senegalese *mbalax* and the tabla playing of Indian musician Zakir Hussain—all on this legendary corner of 57th Street and Seventh Avenue.

In 2009–2010, Carnegie Hall more than lived up to this legacy with *Ancient Paths, Modern Voices*, a festival that delved into the dynamic, multifaceted culture of China. Traditional ensembles—including some that had never

before performed outside of China—and contemporary classical-music composers and performers all played major roles in the 21-day festival.

Partner organizations highlighted Chinese dance, visual arts, and film, broadening the horizons of regular concertgoers and attracting new audiences, including members of the Chinese-American community. And for the first time, Carnegie Hall's live festival programming reached audiences outside New York City when the Segerstrom Center for the Arts brought select *Ancient Paths, Modern Voices* events to Costa Mesa, California for a similar festival presented by the Philharmonic Society of Orange County.



Evgeny Kissin with the Boston Symphony Orchestra at The Opening Night Gala of Carnegie Hall's 119th Season | October 1

Chris Lee

October

Thursday, October 1 at 7 PM | Stern/Perelman
The Opening Night Gala of Carnegie Hall's 119th Season

Boston Symphony Orchestra | Daniele Gatti, Conductor
Evgeny Kissin, Piano | Ann Hobson Pilot, Harp

Wednesday, October 7 at 7:30 PM | Zankel
Standard Time with Michael Feinstein
Michael Feinstein, Artistic Director
Noah Racey and Wesla Whitfield, Special Guests
With pianists Mike Greensill and Ross Patterson

Friday, October 9 at 7:30 PM | Weill
Sandrine Piau, Soprano
Susan Manoff, Piano

Friday, October 9 at 8 PM | Stern/Perelman
The New York Pops
Steven Reineke, Music Director and Conductor
Wayne Brady, Guest Artist

Saturday, October 10 at 8 PM | Stern/Perelman
Ravi Shankar, Sitar
Anoushka Shankar, Sitar

Saturday, October 10 at 8:30 PM | Zankel
Dan Wilson, Vocals
Cory Chisel and the Wandering Sons

Tuesday, October 13 at 7:30 PM | Weill
Ensemble ACJW

Tuesday, October 13 at 8 PM | Stern/Perelman
The Philadelphia Orchestra
Charles Dutoit, Chief Conductor
Yuja Wang, Piano

Wednesday, October 14 at 7:30 PM | Zankel
Christine Brewer, Soprano
Craig Rutenberg, Piano

Wednesday, October 14 at 8 PM | Stern/Perelman
Mitsuko Uchida, Piano

Thursday, October 15 at 8 PM | Stern/Perelman
Orchestre Révolutionnaire et Romantique
Sir John Eliot Gardiner, Artistic Director and Conductor
The Monteverdi Choir | Lucy Crowe, Soprano
James Gilchrist, Tenor | Matthew Rose, Bass

Friday, October 16 at 8 PM | Stern/Perelman
Punch Brothers featuring Chris Thile

Saturday, October 17 at 7:30 PM | Zankel
Takács Quartet

Saturday, October 17 at 8 PM | Stern/Perelman
Orchestre Révolutionnaire et Romantique
Sir John Eliot Gardiner, Artistic Director and Conductor
The Monteverdi Choir | Lucy Crowe, Soprano
Sophie Karthäuser, Soprano | James Gilchrist, Tenor
Vuyani Mlinde, Bass | Matthew Rose, Bass

Tuesday, October 20 at 7:30 PM | Weill
Dame Emma Kirkby, Soprano
Jakob Lindberg, Lute

Wednesday, October 21 at 7:30 PM | Zankel
Quanzhou Marionette Theater
Wang Jingxian, Director
Xia Rongfeng, Chen Yinghong, Zhang Gong,
and Lin Xiaojun, Master Puppeteers
Chen Zhijie, Drum Master

Friday, October 23 at 7:30 PM | Zankel
Taste of China
Wu Man, Curator, Pipa, and Host
Dong Female Singing Group
Zhao Jiazhen, Qin
Ba Da Chui, Percussion Quartet

Friday, October 23 at 8 PM | Stern/Perelman
Murray Perahia, Piano

Saturday, October 24 at 7:30 PM | Zankel
Ancient Spirits
Wu Man, Curator, Pipa, and Host
Li Family Daoist Band
Zhang Family Band (Old Tune Traditional Music
with Shadow Puppets)

Monday, October 26 at 7:30 PM | Weill
Ensemble ACJW

Tuesday, October 27 at 8 PM | Stern/Perelman
Lang Lang and Friends
Lang Lang, Piano
David Chan, Violin
Guo Gan, Erhu
Hai-Ye Ni, Cello
GeQun Wang, Tenor
Marc Yu, Piano
Jingyi Zhang, Piano
Scholars from the Lang Lang International
Music Foundation

Wednesday, October 28 at 8 PM | Stern/Perelman
Juilliard Orchestra
Michael Tilson Thomas, Conductor
Lang Lang, Piano
Anne Sofie von Otter, Mezzo-Soprano
Gregory Kunde, Tenor

Wednesday, October 28 at 8:30 PM | Zankel
Terence Blanchard, Trumpet
Brice Winston, Tenor Saxophone
Fabian Almazan, Piano
Kendrick Scott, Drums
Michael Olatuja, Bass

Friday, October 30 at 8 PM | Stern/Perelman
Hong Kong Chinese Orchestra
Yan Huichang, Artistic Director and Principal
Conductor
Trey Lee, Cello
Presented by the Ministry of Culture of the People's
Republic of China in partnership with Carnegie Hall.



Sandrine Piau | October 9



Punch Brothers featuring Chris Thile | October 16

CARNEGIE HALL presents

古今迴響 ANCIENT PATHS & MODERN VOICES

A FESTIVAL CELEBRATING CHINESE CULTURE

OCTOBER 21–NOVEMBER 10, 2009

Ancient Paths, Modern Voices paid tribute to a vibrant culture and its influence around the globe with 21 days of events and exhibitions at Carnegie Hall and partner institutions throughout New York City.

Ancient Paths, Modern Voices: A Festival Celebrating Chinese Culture was made possible by a leadership gift from Henry R. Kravis in honor of his wife, Marie-Josée.

Sponsored, in part, by Deloitte LLP

Additional funding from Roche, Agricultural Bank of China, China Merchants Bank, and the Hong Kong Economic & Trade Office, New York.



The Han Tang Yuefu Music and Dance Ensemble

■ Carnegie Hall Events ■ Carnegie Hall Neighborhood Concerts ■ Partner Events

Sunday, October 25 at 2 PM
Flushing Town Hall, The Theater
NEIGHBORHOOD CONCERT: ENSEMBLE ACJW

Sunday, October 25 at 3 PM
Henry Street Settlement, Abrons Arts
NEIGHBORHOOD CONCERT: ZHANG FAMILY BAND
(Old Tune Traditional Music with Shadow Puppets)

Sunday, October 25 at 7 PM
Asia Society
CHINESE TEAHOUSE
Dong Female Singing Group | Zhao Jiazhen, Qin

Monday, October 26 at 7:30 PM
Weill Recital Hall
ENSEMBLE ACJW

Monday, October 26 at 7:30 PM
Alice Tully Hall
JUILLIARD ORCHESTRA
Tan Dun, Conductor
Cho-Liang Lin, Violin

Tuesday, October 27 at 8 PM
Stern Auditorium / Perelman Stage
LANG LANG AND FRIENDS
Lang Lang, Piano
David Chan, Violin
Guo Gan, Erhu
Hai-Ye Ni, Cello
GeQun Wang, Tenor
Marc Yu, Piano
Jingyi Zhang, Piano
Scholars from the Lang Lang International Music Foundation

Wednesday, October 28 at 10:30 AM
Flushing Town Hall, The Theater
CHINESE INSTRUMENT WORKSHOP: MEMBERS OF THE HONG KONG CHINESE ORCHESTRA
Hosted by Chew Hee-chiat, Resident Conductor

Wednesday, October 28 at 8 PM
Stern Auditorium / Perelman Stage
JUILLIARD ORCHESTRA
Michael Tilson Thomas, Conductor
Lang Lang, Piano
Anne Sofie von Otter, Mezzo-Soprano
Gregory Kunde, Tenor

Thursday, October 29 at 4 PM
University Settlement at the Houston Street Center
CHINESE INSTRUMENT WORKSHOP: MEMBERS OF THE HONG KONG CHINESE ORCHESTRA
Hosted by Chew Hee-chiat, Resident Conductor

Wednesday, October 21 at 7:30 PM
Zankel Hall
QUANZHOU MARIONETTE THEATER
Wang Jingxian, Director
Xia Rongfeng, Chen Yinghong, Zhang Gong, and Lin Xiaojun, Master Puppeteers
Chen Zhijie, Drum Master

Thursday, October 22 at 6:30 PM
China Institute
QIN AND CHINESE CALLIGRAPHY
Mingmei Yip, Qin

Friday, October 23 at 7:30 PM
Zankel Hall
TASTE OF CHINA
Wu Man, Curator, Pipa, and Host
Dong Female Singing Group
Zhao Jiazhen, Qin
Ba Da Chui, Percussion Quartet

Saturday, October 24 at 3 PM
The Performance Project @ University Settlement
NEIGHBORHOOD CONCERT: BA DA CHUI, Percussion Quartet
Hosted by Wu Man

Saturday, October 24 at 7:30 PM
Zankel Hall
ANCIENT SPIRITS
Wu Man, Curator and Host
Li Family Daoist Band
Zhang Family Band (Old Tune Traditional Music with Shadow Puppets)

Saturday, October 24 at 7:30 PM
Sunday, October 25 at 7:30 PM
Solomon R. Guggenheim Museum
SHEN WEI DANCE ARTS AT 10
Shen Wei, Artistic Director



Quanzhou Marionette Theater



Dong Female Singing Group



China Festival Opening Ceremony



Guo Gan



Juilliard Orchestra with Michael Tilson Thomas and Anne Sofie von Otter

Friday, October 30 at 8 PM

Stern Auditorium / Perelman Stage

HONG KONG CHINESE ORCHESTRA

Yan Huichang, Artistic Director and Principal Conductor
Trey Lee, Cello

Presented by the Ministry of Culture of the People's Republic of China in partnership with Carnegie Hall.

Monday, November 2 at 7 PM

Asia Society

PANEL DISCUSSION: CHINESE ART(S) TODAY

Melissa Chiu, Moderator
Wenda Gu, Panelist
Tan Dun, Panelist

Monday, November 2 at 7:30 PM

Flushing Town Hall, The Theater

NEIGHBORHOOD CONCERT: HAOCHEN ZHANG, Piano

Tuesday, November 3 at 7:30 PM

Wednesday, November 4 at 7:30 PM

Thursday, November 5 at 8 PM

Friday, November 6 at 8 PM

Saturday, November 7 at 8 PM

Sunday, November 8 at 2 PM and 7:30 PM

The Joyce Theater

THE HAN TANG YUEFU MUSIC AND DANCE ENSEMBLE

(Special Guest Company of the Festival)

Wednesday, November 4 at 8 PM

Stern Auditorium / Perelman Stage

SAINT LOUIS SYMPHONY ORCHESTRA

David Robertson, Music Director and Conductor
Colin Currie, Percussion

Thursday, November 5 at 6:30 PM

China Institute

TRADITIONAL CHINESE MUSIC IN THE 21ST CENTURY

Min Xiao-Fen, Pipa
Huang Ruo, Composer and Conductor
France Pepper, Moderator

Friday, November 6 at 7 PM

Museum of Chinese in America (MOCA)

THE EVOLVING CULTURAL IDENTITY OF CHINESE AMERICAN ARTISTS

David Henry Hwang, Moderator
Bright Sheng, Panelist
Jeff Yang, Panelist

Saturday, November 7 and Sunday, November 8

The Paley Center for Media

MUSIC AND THEATER: A UNIVERSAL LANGUAGE

Quanzhou Marionette Theater by Jennifer Taylor; China Festival Opening Ceremony by Nan Melville; Guo Gan by Chris Lee; Juilliard Orchestra, Tilson Thomas, and Anne Sofie von Otter by Richard Termine; Shanghai Symphony Orchestra by Chris Lee; Shen Wei Dance Arts at 10 by Stephanie Berger; Yu and Lang by Chris Lee; David Henry Hwang by Jennifer Taylor; Dong Female Singing Group by Richard Termine; Mingmei Yip by Jennifer Taylor; Yip by Richard Termine; The Han Tang Yuefu Music and Dance Ensemble by Jennifer Taylor; Marc Yu and Lang Lang by Jennifer Taylor.

EXHIBITIONS

September 5, 2009–February 7, 2010
The Metropolitan Museum of Art
SILK AND BAMBOO: MUSIC AND ART OF CHINA

October 21–December 31
Zankel Hall
HARMONIC VISIONS: AN EXHIBITION OF CONTEMPORARY CHINESE PHOTOGRAPHY

October 29, 2009–January 16, 2010
Arario Gallery
October 29–December 11, 2009
AW Asia
October 24, 2009–January 9, 2010
Chambers Fine Art
October 29–November 30, 2009
ChinaSquare
October 21–November 20, 2009
Goedhuis Contemporary
November 7–December 23, 2009
Max Protetch
October 21–November 14, 2009
Stux Gallery
CHINA IN CHELSEA AND BEYOND

Saturday, November 7 at 8 PM
Stern Auditorium / Perelman Stage
ATLANTA SYMPHONY ORCHESTRA
Robert Spano, Music Director and Conductor
Yo-Yo Ma, Cello
Angel Lam, Narrator
Celena Shafer, Soprano
Jessica Rivera, Soprano
Irina Tchistjakova, Mezzo-Soprano
Vinson Cole, Tenor
Kostas Smoriginas, Bass-Baritone
Jason Grant, Bass
Denis Sedov, Bass
Sean Mayer, Tenor
Stephen Ozcomert, Bass
Atlanta Symphony Chamber Chorus
Norman Mackenzie, Director

Monday, November 9 at 8 PM
Alice Tully Hall
NEW JUILLIARD ENSEMBLE
Joel Sachs, Music Director and Conductor

Tuesday, November 10 at 8 PM
Stern Auditorium / Perelman Stage
SHANGHAI SYMPHONY ORCHESTRA
Long Yu, Music Director and Conductor
Lang Lang, Piano | Xiaoduo Chen, Soprano
Meng Meng, Soprano and Peking Opera Singer | Nan Wang, Erhu | Jia Li, Pipa
Xin Sun, Guzheng



David Henry Hwang



The Han Tang Yuefu Music and Dance Ensemble



Mingmei Yip



Shanghai Symphony Orchestra



Shen Wei Dance Arts at 10



Marc Yu and Lang Lang

November

Monday, November 2 at 8 PM | Stern/Perelman
Boston Symphony Orchestra
Lorin Maazel, Conductor

Tuesday, November 3 at 7:30 PM | Zankel
Kronos Quartet
Wu Man, Pipa
Chen Shi-Zheng, Director and Visual Designer

Wednesday, November 4 at 8 PM | Stern/Perelman
Saint Louis Symphony Orchestra
David Robertson, Music Director and Conductor
Colin Currie, Percussion

Saturday, November 7 at 8 PM | Stern/Perelman
Atlanta Symphony Orchestra
Robert Spano, Music Director and Conductor
Yo-Yo Ma, Cello | Angel Lam, Narrator
Celena Shafer, Soprano | Jessica Rivera, Soprano
Irina Tchistjakova, Mezzo-Soprano | Vinson Cole, Tenor
Kostas Smoriginas, Bass-Baritone | Jason Grant, Bass
Denis Sedov, Bass | Sean Mayer, Tenor
Stephen Ozcomert, Bass | Atlanta Symphony Orchestra
Chamber Chorus | Norman Mackenzie, Director

Tuesday, November 10 at 8 PM | Stern/Perelman
Shanghai Symphony Orchestra
Long Yu, Music Director and Conductor
Lang Lang, Piano | Xiaoduo Chen, Soprano
Meng Meng, Soprano and Peking Opera Singer
Nan Wang, Erhu | Jia Li, Pipa | Xin Sun, Guzheng

Wednesday, November 11 at 8 PM | Stern/Perelman
Berliner Philharmoniker
Sir Simon Rattle, Music Director and Conductor

Wednesday, November 11 at 8:30 PM | Zankel
Esperanza Spalding, Vocals and Bass
Leonardo Genovese, Piano | Terri Lyne
Carrington, Drums | Tineke Postma, Saxophone

Thursday, November 12 at 8 PM | Stern/Perelman
Berliner Philharmoniker
Sir Simon Rattle, Music Director and Conductor
Evelyn Herltzius, Soprano

Friday, November 13 at 7:30 PM | Weill
Luca Pisaroni, Bass-Baritone
Vlad Iftinca, Piano

Friday, November 13 at 8 PM | Stern/Perelman
Berliner Philharmoniker
Sir Simon Rattle, Music Director and Conductor

Friday, November 13 at 8:30 PM | Zankel
Sara Tavares
Ivo Costa, Drums | Luis Caracol, Bass
Jon Luz, Ukulele and Guitar | Juca Monteiro, Percussion



Kronos Quartet and Wu Man | November 3



Sara Tavares | November 13

Expectations Upended

Through its collaborations with Kronos Quartet and Louis Andriessen, Carnegie Hall put the focus this past season on artists who have always done things differently.

“I’m most interested in bringing elements—sounds, musical feelings, and colors—into the realm of what we call the string quartet that have never been there before,” says Kronos founder David Harrington. He and his colleagues did just this as part of their *Perspectives*, working with Chinese *pipa* player Wu Man on *Yin Yu Tang: A Chinese Home*, a Carnegie Hall co-commission that received its premiere as part of a multimedia concert in November. Kronos returned in March for another six events, performing music made for toys and works that incorporated sounds of Central and East Asia; they also featured composers living in the Arctic Circle, celebrated 30 years of collaborating with Terry Riley, and led a Professional Training Workshop.

It’s been a long time since Louis Andriessen set the music scene of his native Netherlands on its ear in 1969 with his provocative disruption of a Royal Concertgebouw Orchestra concert—the so-called “Nutmacker action”—and his straightforward, propulsive compositional style, but he has never lost his relevance.

And while he didn’t interrupt any orchestra concerts during his tenure as The Richard and Barbara Debs Composer’s Chair, he did demonstrate his penchant for eclecticism by bringing longtime musical collaborators and some favorite artists of varied stripes with him. New York audiences heard, for the first time, his 2008 opera *La Commedia*, led by Andriessen’s Nutcracker action co-conspirator Reinbert de Leeuw and featuring the Dutch ensemble Asko | Schoenberg, among others. They also heard *De Staat*, the 1976 piece that established Andriessen’s international reputation, as well as a late-night series of solo improvisatory concerts that the composer curated.



Milton Nascimento | November 18

Sunday, November 15 at 1 PM | Zankel
Carnegie Hall Family Concert: Falu
 Falguni Shah, Vocalist
 Gaurav Shah, Bansuri, Harmonium, and Vocals
 Soumya Chatterjee, Violin
 Aditya Kalyanpur, Tabla
 Mark Tewarson, Guitar
 Special appearance by John Popper, Harmonica

Wednesday, November 18 at 8 PM | Stern/Perelman
Milton Nascimento

Thursday, November 19 at 8 PM | Stern/Perelman
The Philadelphia Orchestra
 Christoph Eschenbach, Conductor

Friday, November 20 at 8 PM | Stern/Perelman
The New York Pops
 Steven Reineke, Music Director and Conductor
 Ann Hampton Callaway, Guest Artist
 James T. Lane, Guest Artist
 N'Kenge, Guest Artist
 Camp Broadway Kids

Saturday, November 21 at 7:30 PM | Zankel
Bang on a Can All-Stars
Trio Mediaeval

Monday, November 30 at 7:30 PM | Zankel
American Composers Orchestra
 Stefan Lano, Conductor
 Curt Cacioppo, Voice and Percussion
 Donal Fox, Piano
 Colin Gee, Writer, Director, and Actor
 Erin Gee, Vocalist
 Huang Ruo, Vocalist

December

Wednesday, December 2 at 7:30 PM | Zankel
Arditti Quartet

Thursday, December 3 at 7:30 PM | Weill
Mendelssohn String Quartet

Thursday, December 3 at 8:30 PM | Zankel
Hiromi, Piano
Kenny Barron, Piano
Roger Kellaway, Piano

Friday, December 4 at 7:30 PM | Weill
Christian Svarfvar, Violin
Anders Kilström, Piano

Friday, December 4 at 8 PM | Stern/Perelman
Vladimir Feltsman, Piano



Hiromi | December 3

Intriguing Composers

For Carnegie Hall audiences, Louis Andriessen's *Perspectives* was a chance to get familiar with the aesthetic of one contemporary composer; the three-concert Nativity Triptych, on the other hand, was an opportunity to compare three distinct treatments, spanning more than 200 years, of the story of Jesus. On the same weekend in December, John Adams led the Orchestra of St. Luke's in his bilingual oratorio

El Niño, and Les Violons du Roy and La Chapelle de Québec, led by Bernard Labadie, performed Handel's *Messiah* and Bach's *Christmas Oratorio*.

Other artists investigated composers and works that are sometimes overlooked. Valery Gergiev and his Mariinsky Orchestra memorably focused on Berlioz, with *Roméo and Juliette* in late February and a two-night concert performance of *Les Troyens* in March. Sir John

Eliot Gardiner, the Orchestre Révolutionnaire et Romantique, and The Monteverdi Choir examined the dramatic style of Haydn's late period with *The Creation* and *The Seasons*, while Piotr Anderszewski advocated for Karol Szymanowski.

And, of course, Carnegie Hall commemorated the 200th birthdays of both Chopin and Schumann with Maurizio Pollini, and Emanuel Ax with Yo-Yo Ma and Dawn Upshaw.



Yo-Yo Ma and Emanuel Ax | January 29

Nascimento and Hiromi by Jack Vartoogian; Ma and Ax by Steve J. Sherman.

Sunday, December 6 at 5 PM | Weill
The MET Chamber Ensemble
James Levine, Artistic Director and Conductor
Jo Ellen Miller, Soprano

Thursday, December 10 at 7:30 PM | Zankel
Peter Serkin, Piano

Friday, December 11 at 8 PM | Stern/Perelman
Les Violons du Roy
La Chapelle de Québec | Bernard Labadie, Music Director and Conductor | Rosemary Joshua, Soprano
David Daniels, Countertenor | Alan Bennett, Tenor
Andrew Foster-Williams, Bass-Baritone

Saturday, December 12 at 8 PM | Stern/Perelman
Les Violons du Roy
La Chapelle de Québec | Bernard Labadie, Music Director and Conductor | Rosemary Joshua, Soprano
David Daniels, Countertenor | Jan Kobow, Tenor
Joshua Hopkins, Baritone

Saturday, December 12 at 10 PM | Zankel
Shelby Lynne

Sunday, December 13 at 8 PM | Stern/Perelman
Orchestra of St. Luke's
John Adams, Conductor | Dawn Upshaw, Soprano
Michelle DeYoung, Mezzo-Soprano | Eric Owens, Bass-Baritone
Daniel Bubeck, Countertenor | Brian Cummings, Countertenor
Steven Rickards, Countertenor | Westminster Symphonic Choir
Joe Miller, Conductor | The Brooklyn Youth Chorus Academy
Dianne Berkun, Artistic Director | Mark Grey, Sound Design

Tuesday, December 15 at 8 PM | Stern/Perelman
Jean-Yves Thibaudet, Piano

Friday, December 18 at 8 PM | Stern/Perelman
The New York Pops
John Morris Russell, Conductor | Sandi Patty, Guest Artist
Young People's Chorus of New York City
Francisco J. Núñez, Founder and Artistic Director

Saturday, December 19 at 2 PM | Stern/Perelman
Carnegie Hall Family Concert: The New York Pops
John Morris Russell, Conductor
John Tartaglia, Narrator
Young People's Chorus of New York City
Francisco J. Núñez, Founder and Artistic Director

Saturday, December 19 at 8 PM | Stern/Perelman
The New York Pops
John Morris Russell, Conductor | Sandi Patty, Guest Artist
Young People's Chorus of New York City
Francisco J. Núñez, Founder and Artistic Director

Sunday, December 20 at 3 PM | Stern/Perelman
The MET Orchestra
James Levine, Music Director and Conductor
Stephanie Blythe, Mezzo-Soprano

Thursday, December 24 at 7 PM
Stern/Perelman
New York String Orchestra
Jaime Laredo, Conductor
Cho-Liang Lin, Violin | Kyoko Takezawa, Violin
Bella Hristova, Violin | Orion String Quartet

Monday, December 28 at 8 PM
Stern/Perelman
New York String Orchestra
Jaime Laredo, Conductor | Peter Serkin, Piano

January

Sunday, January 10 at 5 PM | Zankel
The MET Chamber Ensemble
James Levine, Artistic Director and Conductor
Judith Bettina, Soprano | Kristin Hoff, Mezzo-Soprano | Evan Hughes, Bass-Baritone

Tuesday, January 12 at 7:30 PM | Zankel
Andreas Staier, Fortepiano

Thursday, January 14 at 7:30 PM | Weill
Philippe Jaroussky, Countertenor
Jérôme Ducros, Piano

Friday, January 15 at 8 PM | Stern/Perelman
Vienna Philharmonic Orchestra
Daniel Barenboim, Conductor

Saturday, January 16 at 8 PM | Stern/Perelman
Vienna Philharmonic Orchestra
Pierre Boulez, Conductor
Daniel Barenboim, Piano

Sunday, January 17 at 2 PM | Stern/Perelman
Vienna Philharmonic Orchestra
Daniel Barenboim, Conductor

Tuesday, January 19 at 5:30 PM | Weill
The Song Continues ...
Duo Recital
Nadine Sierra, Soprano | Jerome Tan, Piano
Edward Parks, Baritone | In Sun Suh, Piano

Tuesday, January 19 at 7:30 PM | Zankel
The Song Continues ...
James Levine Master Class

Wednesday, January 20 at 5:30 PM | Weill
The Song Continues ...
Duo Recital
Sasha Cooke, Mezzo-Soprano
Kelly Markgraf, Baritone | Steven Blier, Piano



Wednesday, January 20 at 7:30 PM | Zankel
Christine Schäfer, Soprano
Eric Schneider, Piano

Wednesday, January 20 at 7:30 PM | Weill
The Song Continues ...
Warren Jones Master Class

Thursday, January 21 at 7:30 PM | Zankel
Europa Galante
Fabio Biondi, Director and Violin

Thursday, January 21 at 7:30 PM | Weill
The Song Continues ...
Marilyn Horne Master Class

Friday, January 22 at 7:30 PM | Zankel
The Song Continues ...
Marilyn Horne Foundation
Annual Recital
Marilyn Horne | Keri Alkema, Soprano
Elaine Alvarez, Soprano | Amanda Majeski, Soprano | Jennifer Zetlan, Soprano
Michael Baitzer, Piano | Warren Jones, Piano
Tamara Sanikidze, Piano | David Shimoni, Piano
Kathleen Kim, Special Guest Artist

Sunday, January 24 at 3 PM | Stern/Perelman
The MET Orchestra
James Levine, Music Director and Conductor
Diana Damrau, Soprano

Thursday, January 28 at 8 PM | Stern/Perelman
Houston Symphony
Hans Graf, Music Director and Conductor
Women of the Houston Symphony Chorus
Charles Hausmann, Director

Friday, January 29 at 7:30 PM | Zankel
American Composers Orchestra
Anne Manson, Conductor | Robert Black, Bass
Paquito D'Rivera, Clarinet and Alto Saxophone
Pawel Wojtasik, Video Artist

Friday, January 29 at 8 PM | Stern/Perelman
Yo-Yo Ma, Cello
Emanuel Ax, Piano

Saturday, January 30 at 8 PM | Stern/Perelman
Chicago Symphony Orchestra
Pierre Boulez, Conductor Emeritus
Mathieu Dufour, Flute
Michelle DeYoung, Mezzo-Soprano
Falk Struckmann, Bass-Baritone

Sunday, January 31 at 8 PM | Stern/Perelman
Chicago Symphony Orchestra
Pierre Boulez, Conductor Emeritus
Pierre-Laurent Aimard, Piano
Tamara Stefanovich, Piano | Cynthia Yeh, Percussionist | Vadim Karpinos, Percussionist



Manfred Honeck and the Pittsburgh Symphony Orchestra | February 9

Julien Jourdes

Notable Firsts, Tributes, and Farewells

There were some notable first performances here at Carnegie Hall in 2009–2010. Manfred Honeck and his Pittsburgh Symphony performed in Stern Auditorium / Perelman Stage together for the first time, and Alan Gilbert made his maiden Carnegie Hall appearance as the New York Philharmonic’s Music Director. On that concert, Kari Kriiku gave the US premiere of Magnus Lindberg’s Clarinet Concerto, one of nine US premieres this past season. There were also 15 world premieres, 32 New York premieres, and nine Carnegie Hall–commissioned works—showing Carnegie Hall’s strong commitment to the future of music.

In addition to these memorable beginnings, there was also a touching farewell recital by Frederica von Stade and an 85th-birthday tribute to Pierre Boulez, who conducted The MET Orchestra for the first time, and also led the Chicago Symphony and Vienna Philharmonic orchestras.

All of this in addition to a stunning Houston Symphony performance of *The Planets* with crisp HD images from NASA, rousing gospel music at *A Night of Inspiration*, and scores of other concerts covering a world of musical styles that made 2009–2010 a memorable musical trip, no matter which road you took.

February

Monday, February 1 at 7:30 PM | Weill
Fabio Biondi, Violin
Paola Poncet, Harpsichord

Monday, February 1 at 8 PM | Stern/Perelman
Boston Symphony Orchestra
 James Levine, Music Director and Conductor
 Pierre-Laurent Aimard, Piano
 Steven Ansell, Viola

Tuesday, February 2 at 8 PM | Stern/Perelman
Radu Lupu, Piano

Friday, February 5 at 7:30 PM | Weill
Leipzig String Quartet

Tuesday, February 9 at 7:30 PM | Weill
Ensemble ACJW

Tuesday, February 9 at 8 PM | Stern/Perelman
Pittsburgh Symphony Orchestra
 Manfred Honeck, Music Director and Conductor
 Anne-Sophie Mutter, Violin

Wednesday, February 10 at 7:30 PM | Zankel
Standard Time with Michael Feinstein
 Michael Feinstein, Artistic Director
 Brent Barrett and Michele Lee, Special Guests
 With pianist Chris Denny

Wednesday, February 10 at 8 PM | Stern/Perelman
Emanuel Ax, Piano

Friday, February 12 at 7:30 PM | Weill
ATOS Trio

Friday, February 12 at 7:30 PM | Zankel
Dave Douglas Young Artists Concert
 Chad Lefkowitz-Brown, Saxophone
 Eden Bareket, Baritone Saxophone
 Nadje Noordhuis, Trumpet
 Philip Dizack, Trumpet
 Dan Peck, Tuba
 Johannes Dickbauer, Violin
 Rizpah Lowe, Harp
 Hui-Chun Lin, Cello
 Linda Oh, Bass
 Kristijan Krajncan, Drums
 Sam Harris, Piano

Saturday, February 13 at 8 PM | Stern/Perelman
New York Philharmonic
 Alan Gilbert, Music Director and Conductor
 Kari Kriikku, Clarinet

Monday, February 15 at 8 PM | Stern/Perelman
Cincinnati Symphony Orchestra
 Paavo Järvi, Music Director and Conductor
 Radu Lupu, Piano

Tuesday, February 16 at 8 PM | Stern/Perelman
Royal Concertgebouw Orchestra
 Mariss Jansons, Chief Conductor | Janine Jansen, Violin

Wednesday, February 17 at 8 PM | Stern/Perelman
Royal Concertgebouw Orchestra
 Mariss Jansons, Chief Conductor
 Jill Grove, Mezzo-Soprano
 New York Choral Artists
 Joseph Flummerfelt, Chorus Director
 The American Boychoir
 Fernando Malvar-Ruiz, Music Director

Wednesday, February 17 at 10 PM | Zankel
Eliane Elias, Piano and Vocals
 Marc Johnson, Bass
 Rubens de La Corte, Guitar
 Rafael Barata, Drums

Friday, February 19 at 8:30 PM | Zankel
Richie Havens

Saturday, February 20 at 7:30 PM | Zankel
Takács Quartet

Sunday, February 21 at 2 PM | Stern/Perelman
Orchestra of St. Luke’s
 Sir Roger Norrington, Conductor
 Jessica Rivera, Soprano
 Kelley O’Connor, Mezzo-Soprano
 Gordon Gietz, Tenor
 Wayne Tigges, Bass-Baritone
 Westminster Symphonic Choir
 Joe Miller, Conductor

Tuesday, February 23 at 8 PM | Stern/Perelman
Mariinsky Orchestra
 Valery Gergiev, Music Director and Conductor
 Ekaterina Semenchuk, Mezzo-Soprano | Dmitry Voropaev, Tenor
 Evgeny Nikitin, Bass | Chorus of the Mariinsky Theater
 Andrei Petrenko, Chorus Master

Wednesday, February 24 at 8 PM | Stern/Perelman
Joshua Bell, Violin
Jeremy Denk, Piano

Thursday, February 25 at 8 PM | Stern/Perelman
Olga Borodina, Mezzo-Soprano
Dmitri Yefimov, Piano

Saturday, February 27 at 7:30 PM | Zankel
Christian Tetzlaff, Violin
Tanja Tetzlaff, Cello
Lars Vogt, Piano

Saturday, February 27 at 8 PM | Stern/Perelman
Leipzig Gewandhaus Orchestra
 Riccardo Chailly, Chief Conductor
 Nikolaj Znaider, Violin

Sunday, February 28 at 2 PM | Stern/Perelman
Leipzig Gewandhaus Orchestra
 Riccardo Chailly, Chief Conductor
 Louis Lortie, Piano

Sunday, February 28 at 7:30 PM | Zankel
Christian Tetzlaff, Violin
Tanja Tetzlaff, Cello
Lars Vogt, Piano

March

Monday, March 1 at 8 PM | Stern/Perelman
Minnesota Orchestra
Osmo Vänskä, Music Director and Conductor
Päivi Nisula, Soprano
Hannu Niemelä, Baritone
YL Male Voice Choir
Matti Hyökki, Chorus Master

Thursday, March 4 at 8 PM | Stern/Perelman
**Max Raabe
Palast Orchester**

Friday, March 5 at 7:30 PM | Weill
**Jamie Barton, Mezzo-Soprano
Kathleen Kelly, Piano**

Tuesday, March 9 at 8 PM | Stern/Perelman
Mariinsky Orchestra
Valery Gergiev, Music Director and Conductor
Ekaterina Gubanova, Mezzo-Soprano
Irina Mataeva, Soprano
Elena Vitman, Mezzo-Soprano
Sergei Semishkur, Tenor
Alexei Markov, Baritone
Vadim Kravets, Bass
Timur Abdikeyev, Bass
Yury Alexeyev, Tenor
Yuri Vorobiev, Bass
Alexander Nikitin, Baritone
Chorus of the Mariinsky Theater
Andrei Petrenko, Chorus Master

Wednesday, March 10 at 8 PM | Stern/Perelman
Mariinsky Orchestra
Valery Gergiev, Music Director and Conductor
Ekaterina Semenchuk, Mezzo-Soprano
Zlata Bulycheva, Mezzo-Soprano
Irina Mataeva, Soprano
Sergei Semishkur, Tenor
Daniil Shtoda, Tenor
Dmitry Voropaev, Tenor
Yuri Vorobiev, Bass
Vadim Kravets, Bass
Alexander Nikitin, Baritone
Timur Abdikeyev, Bass
Chorus of the Mariinsky Theater
Andrei Petrenko, Chorus Master

Thursday, March 11 at 7:30 PM | Zankel
Kronos Quartet
Young People's Chorus of New York City
Francisco J. Núñez, Artistic Director

Friday, March 12 at 7:30 PM | Zankel
**Kronos Quartet
Margaret Leng Tan, Toy Piano,
Toy Orchestra, and Vocals
Victor Gama, Pangeia Instrumentos
Matmos**

Friday, March 12 at 7:30 PM | Weill
**Andreas Brantelid, Cello
Bengt Forsberg, Piano**

Friday, March 12 at 8 PM | Stern/Perelman
The New York Pops
Steven Reineke, Music Director and Conductor
Méav, Guest Artist | Ronan Tynan, Guest Artist
Liz Knowles, Violin | Kieran O'Hare, Uilleann
Pipes | Darrah Carr Dance | NYPD Pipes and
Drums of the Emerald Society

Saturday, March 13 at 10 PM | Zankel
**Kronos Quartet
Ritva Koistinen, Kantele
Hurdy-Gurdy
Kimmo Pohjonen, Accordion and Vocals
Samuli Kosminen, Accordion Samples
and Vocal Samples
Tanya Tagaq, Vocals**

Sunday, March 14 at 7:30 PM | Zankel
**Kronos Quartet
Dohee Lee, Vocals, Shruti, Saenghwang,
and Taepyungso
Homayoun Sakhi, Afghan Rubâb
Salar Nader, Tabla
Abbos Kosimov, Doyra
Alim Qasimov Ensemble**

Monday, March 15 at 7:30 PM | Zankel
Artemis Quartet

Wednesday, March 17 at 7:30 PM | Weill
Kronos Quartet Master Class
The Annex Quartet | Callino Quartet
Ragazze Quartet | Wei-Mao Huang, Pipa
Jin Yang, Pipa

Wednesday, March 17 at 8 PM | Stern/Perelman
**Dawn Upshaw, Soprano
Emanuel Ax, Piano**

Friday, March 19 at 7:30 PM | Weill
London Haydn Quartet

Friday, March 19 at 7:30 PM | Zankel
**Anthony Marwood, Violin
Steven Isserlis, Cello
Thomas Adès, Piano**



Thomas Adès and Steven Isserlis | March 19



Bassekou Kouyate and Ngoni Ba | March 26

Saturday, March 20 at 7:30 PM | Zankel
**Gerald Finley, Baritone
Julius Drake, Piano**

Sunday, March 21 at 2 PM | Stern/Perelman
Orchestra of St. Luke's
Christian Zacharias, Conductor and Pianist

Sunday, March 21 at 7:30 PM | Zankel
Kronos Quartet Young Artists Concert
The Annex Quartet | Callino Quartet
Ragazze Quartet | Wei-Mao Huang, Pipa
Jin Yang, Pipa

Monday, March 22 at 7:30 PM | Zankel
Standard Time with Michael Feinstein
Michael Feinstein, Artistic Director
William Blake and Jennifer Sheehan,
Special Guests
With Ken Ascher, Musical Director and Piano
Glenn Drewes, Trumpet | David Mann, Reeds
Bob Mann, Guitar | Sean Smith, Bass
Dave Ratajczak, Drums
With pianists James Followell and
James Sampliner

Tuesday, March 23 at 7:30 PM | Weill
**Monica Huggett, Violin
Kenneth Weiss, Harpsichord**

Wednesday, March 24 at 7:30 PM | Zankel
Ensemble ACJW
Thomas Adès, Conductor | Cecelia Hall, Mezzo-
Soprano | Daniel Taylor, Countertenor

Thursday, March 25 at 8 PM | Stern/Perelman
San Francisco Symphony
Michael Tilson Thomas, Music Director and
Conductor | Christian Tetzlaff, Violin

Thursday, March 25 at 9:30 PM | Zankel
So Percussion

Friday, March 26 at 8 PM | Stern/Perelman
San Francisco Symphony
Michael Tilson Thomas, Music Director and
Conductor | Laura Claycomb, Soprano
Katarina Karnéus, Mezzo-Soprano
Westminster Symphonic Choir
Joe Miller, Conductor

Friday, March 26 at 10 PM | Zankel
Bassekou Kouyate and Ngoni Ba

Saturday, March 27 at 1 PM | Zankel
**Carnegie Hall Family Concert:
Time for Three**

Saturday, March 27 at 8 PM | Stern/Perelman
Thomas Adès, Piano

April

Thursday, April 1 at 8 PM | Stern/Perelman
Sondra Radvanovsky, Soprano
Dmitri Hvorostovsky, Baritone
 National Philharmonic
 Marco Armiliato, Conductor

Monday, April 5 at 7:30 PM | Zankel
Alice Coote, Mezzo-Soprano
Julius Drake, Piano

Monday, April 5 at 8 PM | Stern/Perelman
Boston Symphony Orchestra
 Rafael Frühbeck de Burgos, Conductor
 Christine Brewer, Soprano
 Stephanie Blythe, Mezzo-Soprano
 Anthony Dean Griffey, Tenor
 Shenyang, Bass-Baritone
 Tanglewood Festival Chorus
 John Oliver, Conductor

Friday, April 9 at 7:30 PM | Zankel
American Composers Orchestra
 Jeffrey Milarsky, Conductor
 William Anderson, Electric Guitar
 John Korsrud, Trumpet

Monday, April 12 at 7:30 PM | Zankel
Dorothea Röschmann, Soprano
Julius Drake, Piano

Monday, April 12 at 8 PM | Stern/Perelman
Yefim Bronfman, Piano

Tuesday, April 13 at 7:30 PM | Weill
Ensemble ACJW
 James Baker, Conductor

Tuesday, April 13 at 8 PM | Stern/Perelman
The Philadelphia Orchestra
 Charles Dutoit, Chief Conductor | Piotr Anderszewski, Piano

Wednesday, April 14 at 9:30 PM | Weill
Maurice Chestnut, Tap Dancer
Iva Bittová, Violin/Vocals

Thursday, April 15 at 8 PM | Stern/Perelman
Asko | Schoenberg
 Reinbert de Leeuw, Conductor | Synergy Vocals
 Claron McFadden | Cristina Zavalloni
 Jeroen Willems | Marcel Beekman
 The Brooklyn Youth Chorus Academy | Dianne Berkun, Artistic Director

Friday, April 16 at 7:30 PM | Zankel
Asko | Schoenberg
 Reinbert de Leeuw, Conductor and Pianist
 Barbara Sukowa, Voice
 Dirk Luijmes, Harmonium

Friday, April 16 at 8 PM | Stern/Perelman
The New York Pops
 Steven Reineke, Music Director and Conductor
 Kelli O'Hara, Guest Artist
 Paulo Szot, Guest Artist
 Michael Slattery, Guest Artist
 The Clurman Singers
 Judith Clurman, Director
 New York Theatre Ballet
 Diana Byer, Artistic Director

Friday, April 16 at 9:30 PM | Weill
Greetje Bijma, Voice
Louis Andriessen, Piano
Evan Parker, Saxophone

Saturday, April 17 at 9:30 PM | Weill
Iva Bittová, Violin/Vocals
Cristina Zavalloni, Voice
Andrea Rebaudengo, Piano

Sunday, April 18 at 3 PM | Stern/Perelman
Maurizio Pollini, Piano

Sunday, April 18 at 7:30 PM | Zankel
Takács Quartet

Monday, April 19 at 7:30 PM | Weill
Kuss Quartet

Thursday, April 22 at 8 PM | Stern/Perelman
Frederica von Stade, Mezzo-Soprano
Martin Katz, Piano
 With special guests
 Richard Stilwell, Baritone
 Samuel Ramey, Bass
 Emil Miland, Cello
 Lee Hoiby, Piano

Friday, April 23 at 7:30 PM | Weill
Benjamin Hochman, Piano

Tuesday, April 27 at 8:30 PM | Zankel
Jon Faddis Quartet
 Jon Faddis, Trumpet
 David Hazeltine, Piano
 Todd Coolman, Bass
 Dion Parson, Drums

Wednesday, April 28 at 8 PM | Stern/Perelman
A Night of Inspiration
 Soledad O'Brien and Pastor A. R. Bernard,
 Co-Hosts
 Appearances by
 Pastor Shirley Caesar
 Kurt Carr
 Sheila E.
 Patty Griffin
 Fred Hammond
 Michael McDonald
 Phylicia Rashad
 Richard Smallwood
 Bishop Hezekiah Walker
 Pauletta Pearson Washington
 BeBe Winans
 CeCe Winans
 Ray Chew, Musical Director

Thursday, April 29 at 8 PM | Stern/Perelman
Maurizio Pollini, Piano



Louis Andriessen and Greetje Bijma | April 16



Iva Bittová and Kurt Carr in *A Night of Inspiration* | April 28



Piotr Anderszewski and Iwona Sobotka | May 1

May/June

Saturday, May 1 at 7:30 PM | Zankel
Piotr Anderszewski, Piano
Belcea Quartet
Henning Kraggerud, Violin
Iwona Sobotka, Soprano

Sunday, May 2 at 7:30 PM | Zankel
Piotr Anderszewski, Piano
Belcea Quartet
Henning Kraggerud, Viola
Iwona Sobotka, Soprano

Monday, May 3 at 7:30 PM | Zankel
Venice Baroque Orchestra
 Andrea Marcon, Director
 Giuliano Carmignola, Violin

Wednesday, May 5 at 8 PM
 Stern/Perelman
Thomas Quasthoff, Bass-Baritone
Justus Zeyen, Piano

Friday, May 7, 2010 at 10 PM | Zankel
Sones de México Ensemble
 Víctor Pichardo, Music Director, Guitars
 and Vocals | Juan Díes, Bass and Vocals
 Lorena Iñiguez, Dance, Vihuela, and Jarana
 Juan Rivera, Fiddle, Requinto, and Vocals
 Zacbé Pichardo, Harp, Marimba, and
 Percussion | Javier Saume, Drums and
 Percussion

Saturday, May 8 at 7:30 PM | Weill
Leon Fleisher Young Artists Concert
 Vox Piano Trio
 The Jasper String Quartet
 with Kyung Wha Chu, Piano

Sunday, May 9 at 3 PM | Stern/Perelman
Maurizio Pollini, Piano

Sunday, May 9 at 3 PM | Weill
Leon Fleisher Young Artists Concert
 Amici Piano Quartet | Hill Piano Quartet

Monday, May 10 at 6 PM | Zankel
Ensemble ACJW
 John Adams, Conductor
 Jeremy Denk, Piano

Tuesday, May 11 at 7:30 PM | Zankel
Nicolas Hodges, Piano

Saturday, May 15 at 1 PM | Zankel
Carnegie Hall Family Concert:
Polygraph Lounge

Sunday, May 16 at 3 PM | Stern/Perelman
The MET Orchestra
 Pierre Boulez, Conductor
 Deborah Polaski, Soprano

Thursday, May 20 at 8 PM
 Stern/Perelman
Yundi, Piano

Friday, May 21 at 8 PM | Stern/Perelman
The Cleveland Orchestra
 Franz Welser-Möst, Music Director and
 Conductor | Erin Morley, Soprano

Saturday, June 5 at 1 PM | Zankel
Carnegie Hall Family Concert:
Ensemble ACJW



Anderszewski and Sobotka by Jennifer Taylor. Sones de México Ensemble by Richard Termine.

Sones de México Ensemble | May 7

Weill Music Institute

Music Beyond Borders

The Weill Music Institute played an essential role in the journey of discovery that Carnegie Hall embarked upon in 2009–2010. Through its free community performances, its work with students and teachers, and its training workshops for young professionals with the world's finest artists, WMI inspired more than 115,000 people in New York City and around the world—as well as an additional 65,000 people online—to explore the music and culture of other peoples, as well as their own.



Musical Explorers | April 21

Stefan Cohen

School Programs

The McGraw-Hill Companies CarnegieKids (Pre-K and Kindergarten)

January 27–30; March 4–6, 2010
Zankel

Sound Playground

Mark Stewart and Rob Schwimmer
of Polygraph Lounge

Musical Explorers (Elementary School)

November 16–20, 2009 | Zankel

April 20–23, 2010 | Zankel

Musical Explorers: My City, My Song

Link Up

(Elementary School)

May 25–27, 2010 | Stern/Perelman
The Orchestra Rocks

Orchestra of St. Luke's
Rossen Milanov, Conductor

Link Up National

(Elementary School)

Carnegie Hall (WV)
Saint Louis Symphony Orchestra (MO)
Omaha Symphony Orchestra (NE)
University of Southern Mississippi (MS)
Fort Worth Symphony Orchestra (TX)
West Michigan Symphony (MI)
Meridian Symphony Orchestra (MS)
Albany Symphony Orchestra (GA)
Gulf Coast Symphony (MS)

Perelman American Roots

(Middle School)

May 21, 2010 | Zankel
Fisk Jubilee Singers

Global Encounters (High School)

December 9, 2009 | Zankel
Music of India

May 5, 2010 | Zankel
Music of Mexico

Cultural Exchange (High School)

December 8, 2009; April 14, 2010
Zankel

Music of India

January 26 and May 6, 2010 | Zankel
Music of Mexico

Creative Learning Project (High School)

May 1, 2010 | Marion Anderson
Theater, Aaron Davis Hall

Too Hot to Handel

Spring Showcase

BOB CHRISTIANSON /
GARY ANDERSON Selections from
Too Hot to Handel (original concept
by Marin Alsop)

Leslie Stifelman, Music Director
Bob Christianson, Organ
Cliff Carter, Piano
Mike Pope, Bass
Clint De Ganon, Drums

Choirs from Frank Sinatra School of
the Arts, Songs of Solomon, Bayside
High School for the Arts, Fordham High
School for the Arts, Edward R. Murrow
High School, and Urban Assembly
School for the Performing Arts

Music Blueprint Model School

(Elementary School)

Yearlong activities

PS/MS 161 Pedro Albizu Campos
Manhattan

A school partnership that embraces
the objectives of the New York City
Department of Education's Blueprint
for Teaching and Learning in the Arts

School Residency Program

(All Grade Levels)

Yearlong activities

An ongoing collaboration between
select schools and teaching
artists that engages students in
Carnegie Hall's school programs
and creative musical work



Fisk Jubilee Singers in Perelman American Roots | May 21



Link Up | May 26

Perelman American Roots by Nan Melville; Link Up by Pete Checchia; The McGraw-Hill Companies CarnegieKids by Stefan Cohen.



The McGraw-Hill Companies CarnegieKids | January 28

“Citizens of the World”

Within New York City public schools last season, WMI's Cultural Exchange program introduced high school students to the musical cultures of India and Mexico, offering opportunities for young people in both New York City and the country being studied to engage with one another through a specially designed online community and interactive videoconferenced concerts.

Cultural Exchange is about more than just music: It helps young people see themselves as part of an international community. As one teacher put it, it is “the best training ground I have seen for youth ambassadors to learn that they can be citizens of the world.”

Link Up, which develops the performing and listening skills of children in grades three through five, turned 25 in 2009–2010. WMI revamped the program, unveiling the new *Orchestra Rocks!* curriculum, and provided Link Up resources to orchestras and schools around the country.

All programs—including Global Encounters, Perelman American Roots, Musical Explorers, and The McGraw-Hill Companies CarnegieKids—reach thousands of students in 230 schools in the New York metropolitan area. And the programs are much needed. According to the US Department of Education, only 12% of New York City elementary schools reach minimum arts education requirements, with only 974 music teachers for 1.1 million students.

Community and Family Programs

Neighborhood Concert Series Family Concerts

For more than 30 years, Carnegie Hall has brought free concerts for all ages to neighborhoods throughout the five boroughs of New York City in collaboration with museums, colleges, libraries, community centers, churches, and cultural organizations. Performances feature music reflecting both the diverse sounds of the city and Carnegie Hall's quality programming, including classical, jazz, world music, and more. In 2009–2010, the Weill Music Institute presented 45 Neighborhood Concerts.

Community Partnership Program

The Community Partnership Program is designed to embrace, encourage, and enhance a community's musical life through interactive performances and creative projects in collaboration with partner institutions. A centerpiece of this program has been Carnegie Hall's Community Sing events, in which artists invite audience members to draw on their own musical capacity and join their ensemble for an evening. In 2009–2010, five Community Sings took place, featuring Take 6, Lila Downs, Songs of Solomon, Young People's Chorus of New York City, and Fisk Jubilee Singers.

Musical Connections

Musical Connections addresses the needs of people dealing with challenging social and emotional circumstances by providing free musical performances, workshops, and residencies in homeless shelters, correctional facilities, healthcare facilities, and elderly care centers in New York City. As part of the program, selected artists receive regular Professional Development sessions to support them in creating meaningful musical and human connections through their performances. In 2009–2010 (the program's pilot year), there were 55 events including 51 concerts, two creative projects in two juvenile detention facilities, a six-month-long songwriting residency at a homeless shelter, and a Professional Development Day for staff working in homeless shelters.

November 15, 2009
Zankel

Falu
Falguni Shah, Vocalist
Gaurav Shah, Bansuri,
Harmonium, and Vocals
Soumya Chatterjee, Violin
Aditya Kalyanpur, Tabla
Mark Tewarson, Guitar
Special appearance by
John Popper, Harmonica

December 19, 2009
Stern/Perelman

**The New York Pops:
The Polar Express**
John Morris Russell, Conductor
John Tartaglia, Narrator
Young People's Chorus of
New York City
Francisco J. Núñez, Artistic
Director

March 27, 2010 | Zankel
Time for Three

Zachary De Pue, Violin
Nicolas Kendall, Violin
Ranaan Meyer, Double Bass

May 15, 2010 | Zankel
Polygraph Lounge

Mark Stewart
Rob Schwimmer

June 5, 2010 | Zankel
Ensemble ACJW



Musical Explorers
PS 161



Music Blueprint
Model School
Harlem Stage



Musical Connections
Jacobi Medical Center

Each dot on the map represents the site of a WMI program held during the 2009–2010 season.

- Community Partnership Program
- Cultural Exchange
- Family Concerts
- Global Encounters
- Link Up
- The McGraw Hill Companies CarnegieKids
- Music Blueprint Model School
- Musical Connections
- Musical Explorers
- Neighborhood Concerts
- Perelman American Roots



Link Up
Carnegie Hall



Neighborhood
Concert
Snug Harbor
Cultural Center



Cultural Exchange Mexico
with students from Martin
Van Buren High School

Programs of the Weill Music Institute also reached teachers and students around the country and throughout the world during the 2009–2010 season.

Connecticut, Hawaii, Louisiana, Michigan, Mississippi, Missouri, Nebraska, New Jersey, New York, Pennsylvania, Texas, and West Virginia | India and Mexico

“We All Felt Free”

This season, specially selected musicians brought the sounds of Bach, Beethoven, hip-hop, and even Balkan brass music to over 5,500 people with more than 50 events in healthcare centers, correctional facilities, shelters, and elderly care facilities as part of the WMI pilot program Musical Connections.

The response was overwhelming. “For those few hours, we all felt free,” said an inmate at Bedford Hills Correctional Facility who heard Haitian singer Emeline Michel. A concert for children being treated at St. Vincent’s Hospital “warmed the hearts of our patients and staff,” noted nurse manager Doret Edmonds.

Beyond Musical Connections, WMI continued its longstanding commitment to making the act of performing a central part of its free Neighborhood Concerts. At five Community Sing events, held in Manhattan and in the Bronx, the audience was a part of the action: Not only did attendees get a chance to speak with the artists, but they also learned music and sang along. During Neighborhood Concerts at Flushing Town Hall and the Abrons Arts Center at the Houston Street Center—part of *Ancient Paths, Modern Voices*—audience members got to try out the traditional instruments that members of the Hong Kong Chinese Orchestra demonstrated for them. These events were but a handful of the 45 Neighborhood Concerts that WMI presented in community venues throughout New York City’s five boroughs.



Dave Douglas Workshop | February 2-7



Teaching Artist Collaborative | January 12

Professional Programs

Professional Training Workshops

January 18-22, 2010
The Song Continues ...
 For Singers

Presented by the Weill Music Institute in partnership with the Marilyn Horne Foundation

February 2-7, 2010
Dave Douglas Workshop: Creative Composition and Improvisation
 For Composer-Performers

March 14-21, 2010
Kronos Quartet Workshop: Expanding the String Quartet Repertoire
 For String Quartets and Pipa

May 3-9, 2010
Leon Fleisher Workshop: Brahms Chamber Music
 For Piano Trios, Quartets, and Quintets

Teaching Artist Collaborative

The Teaching Artist Collaborative helps practicing and emerging teaching artists and musicians acquire skills, experience, philosophies, relationships, and ideas in order to more effectively serve students and community members of New York City. Comprising a diverse assortment of musicians from around New York City, the Collaborative is a community committed to developing and practicing teaching artistry at the highest level.

Weill Fellows

May 17-21, 2009
 In 2001, Carnegie Hall—with generous support from the US Department of State Bureau of Educational and Cultural Affairs—established the Weill Fellows program, bringing musicians, educators, and administrators from different countries together to stimulate the exchange of ideas about music and education and share their best teaching practices. In 2010, a select group of teachers from India and Mexico spent a week in New York City visiting public schools, cultural institutions, and city landmarks and meeting New York City teachers, participating in workshops, furthering their professional development, and deepening the global dialogue about arts education. The selected teachers also participated in the Cultural Exchange program for high school students.



Kronos Quartet Workshop | March 14-21

Dave Douglas Workshop by Stephanie Berger; Teaching Artist Collaborative by Chris Lee; Kronos Quartet Workshop by Julien Jourdes.

“Unforgettable”

In a season that saw Carnegie Hall bridge cultures through its festivals and programming, it made perfect sense for *Perspectives* artists Kronos Quartet to lead a WMI Professional Training Workshop devoted to expanding the string quartet repertoire.

The quartet members’ penchant for collaboration also made them excellent workshop leaders. Three young quartets got the chance to work with Kronos and its Workshop partner Wu Man on works that the quartet had commissioned over the past 35 years. The workshop culminated in a concert in March that included music by composers hailing from all over the world, including

Azerbaijan and Israel, China and the US (featuring Kronos’s frequent collaborator Terry Riley).

Leon Fleisher’s Professional Training Workshops have always been, as one participant said, “an incredible opportunity ... unforgettable!” He returned to Carnegie Hall last May to focus on the chamber music of Brahms. In addition, Dave Douglas opened up the Professional Training Workshop program to jazz, focusing on the relationship between composition and improvisation, and Marilyn Horne continued to help young singers with her annual *The Song Continues ...*, a week of master classes and recitals.

The Academy

A program of Carnegie Hall, The Juilliard School, and the Weill Music Institute in partnership with the New York City Department of Education

Exemplary performers, dedicated teachers, and advocates for music throughout the community, the fellows of The Academy are redefining what it means to be a musician today.

Created four years ago, The Academy is a two-year program that supports young professional musicians in developing careers as top-quality performers, innovative programmers, and dedicated teachers who are fully engaged with the neighborhoods in which they live and work.



Owen Dalby and Yonah Zur in Weill Recital Hall | June 6

Fellows of The Academy, 2009–2010

- Bradley Balliett, Bassoon
- Sarah Beaty, Clarinet
- Meena M. Bhasin, Viola
- Brenton Caldwell, Viola
- Nicholas Canellakis, Cello
- Julietta Curenton, Flute
- Owen Dalby, Violin
- Gregory DeTurck, Piano
- Joanna Marie Frankel, Violin
- Angelina Gadeliya, Piano
- Alicia Lee, Clarinet
- Alma Maria Liebrecht, Horn
- Paul Murphy, Trumpet
- Evan Premo, Double Bass
- Eric Reed, Horn
- Brandon Ridenour, Trumpet
- David Skidmore, Percussion
- James Austin Smith, Oboe
- Saeunn Thorsteinsdottir, Cello
- Yonah Zur, Violin



Fellows of The Academy, 2009–2010



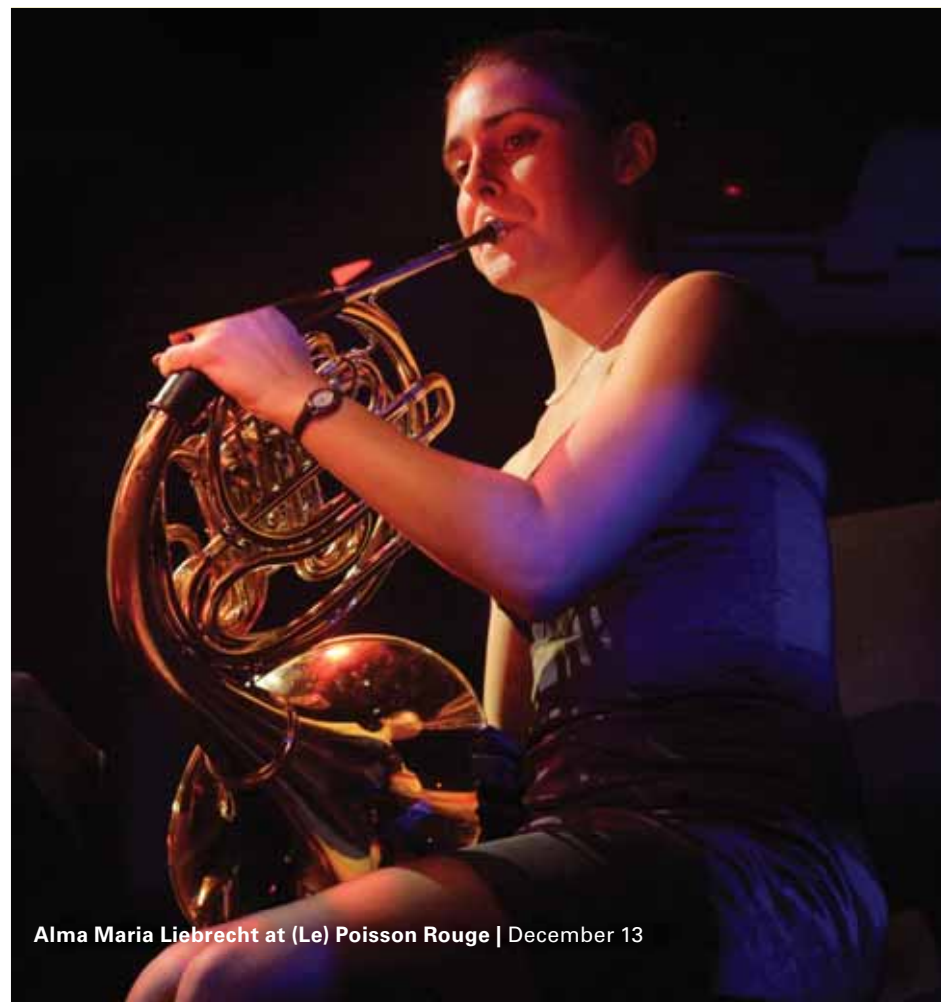
Evan Premo at (Le) Poisson Rouge | December 13

Astounding Audiences

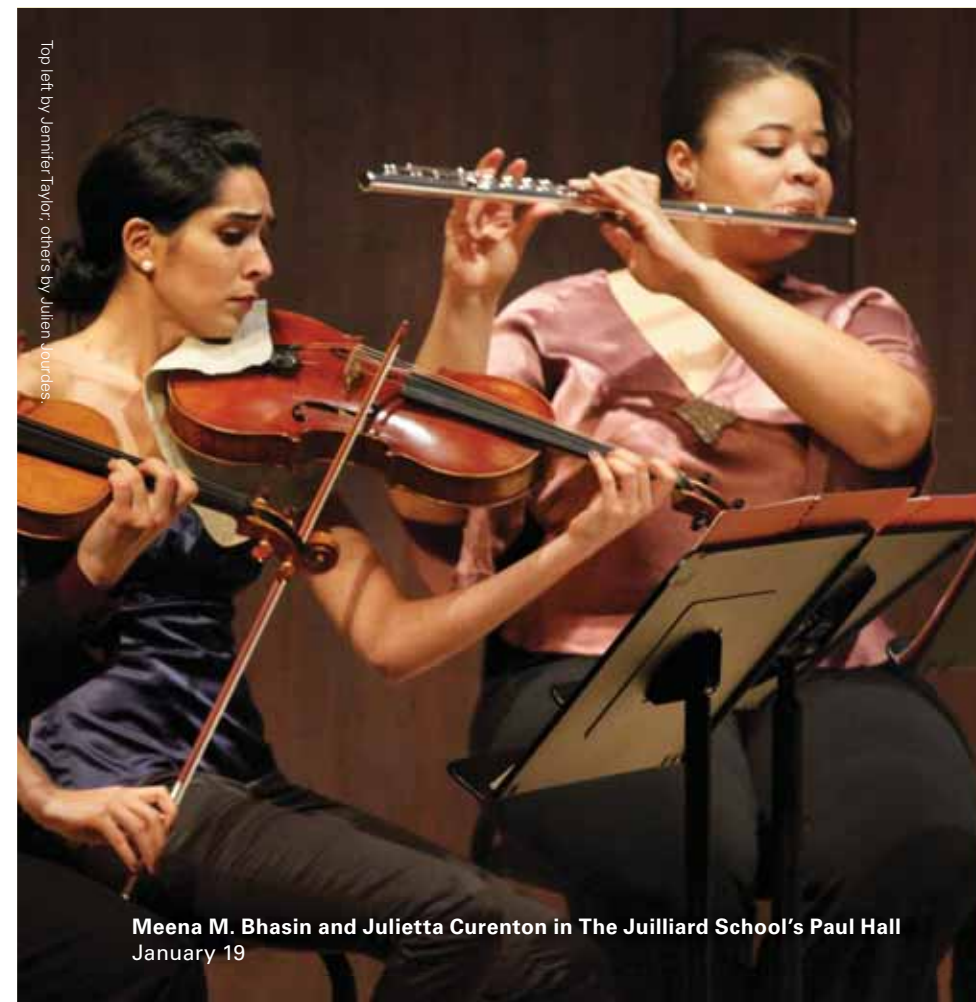
As Ensemble ACJW, Academy fellows performed more than 30 concerts in 2009–2010, both on their own and in collaboration with major artists. The critically acclaimed group was an important part of Louis Andriessen’s residency, performing *De Staat* in May with John Adams conducting. In March, the ensemble teamed with Thomas Adès for a program of his own music in addition to works by Gerald Barry, Brahms, and Purcell.

Reflecting the important status this group has reached throughout New York City as a top-notch performing ensemble in its own right, Ensemble ACJW again had its own four-concert series in Weill Recital Hall. It included an *Ancient Paths, Modern Voices* concert honoring the “Class of 1978”—the first generation of composers that emerged from the Chinese Central Conservatory after the Cultural Revolution, including Tan Dun, Guo Wenjing, Chen Yi, and Chen Qigang.

Ensemble ACJW also launched a series at the downtown club (Le) Poisson Rouge with a concert that Anthony Tommasini of *The New York Times* called “one of the most liberating programs I have heard in years.”



Alma Maria Liebrecht at (Le) Poisson Rouge | December 13



Top left by Jennifer Taylor, others by Julien Jourdes.

Meena M. Bhasin and Julietta Curenton in The Juilliard School’s Paul Hall
January 19



Brad Balliett teaching at PS315K | May 5

Stefan Cohen

Creating Curiosity

Each fellow spent 36 days partnering with a music teacher in a New York City public school classroom. In addition, fellows brought ensemble performances to school assemblies, at which students were invited to take part in music making and other interactive activities.

“I found that there was nothing to be afraid of. Kids are surprisingly into things that they don’t know a lot about,” said horn player Eric Reed

of his teaching experience. “That curiosity and openness is the great thing about young minds.”

Martha Nelson, a teacher at PS 63 in Queens, said that her two years working with an Academy fellow has “allowed us to raise our music program to an exemplary level ... The most powerful example of The Academy’s influence shines in the students who work with Academy teachers, as they walk taller, smile broader, and play better!”

Chronological Listing of Ensemble ACJW Events

September 2009–June 2010

September 29, 2009 WNYC Greene Space	December 13, 2009 (Le) Poisson Rouge	April 26, 2010 Apple Store, Upper West Side
October 2, 2009 Bryant Park Fall Festival	January 19, 2010 Paul Hall, The Juilliard School	May 9, 2010 Perelman Theater, Kimmel Center, Philadelphia, PA
October 7–10, 2009 Skidmore College Residency, Saratoga Springs, NY	January 26–27, 2010 New Canaan Schools, New Canaan, CT (alumni only)	May 10, 2010 Zankel Hall
October 9, 2009 Filene Recital Hall, Skidmore College	February 3–6, 2010 Skidmore College Residency, Saratoga Springs, NY	May 26, 2010 Paul Hall, The Juilliard School
October 13, 2009 Weill Recital Hall	February 5, 2010 Ladd Concert Hall, Skidmore College	June 2, 2010 Weill Recital Hall
October 25, 2009 Flushing Town Hall	February 9, 2010 Weill Recital Hall	June 5, 2010 Zankel Hall
October 26, 2010 Weill Recital Hall	February 24, 2010 (Le) Poisson Rouge	June 6, 2010 Casita Maria Center for Arts and Education, Bronx, NY
November 5, 2009 Opus 118 / Harlem School of Music	March 11, 2010 Paul Hall, The Juilliard School	June 6, 2010 Music at Our Saviour’s Atonement
November 8, 2009 Music at Our Saviour’s Atonement	March 24, 2010 Zankel Hall	June 13, 2010 (Le) Poisson Rouge
November 12, 2009 Paul Hall, The Juilliard School	April 13, 2010 Weill Recital Hall	June 14, 2010 Saratoga ArtsFest, Saratoga Springs, NY (alumni only)
November 22, 2009 Peter J. Sharp Theater, The Juilliard School	April 22, 23, 28, 29, and 30, 2010 BOCES Residency, Long Island (alumni only)	June 19–26, 2010 “Music on the Lakes” Cruise (alumni only)



In-class visit with Julietta Curenton at PS135K | January 18



Evan Premo with residents at PSS/WSF Grandparent Family Apartments | May 18

Curenton in-class visit by Nan Melville; Premo second-year project and Ensemble ACJW rehearsal by Stefan Cohen.



John Adams rehearsing with Ensemble ACJW in Zankel Hall | May 10

Academy Partnership Schools

2009–2010 Season

Bronx

PS157X

Brooklyn

PS315K | PS282K | PS135K | PS112K | PS130K | PS249K
IS278K | MS51K | PS69K | PS28K | PS108K

Manhattan

PS46M | PS153M

Queens

PS62Q | PS131Q | PS63Q | JHS 185Q | PS13Q | MS137Q

Looking Beyond

For the third year in a row, Ensemble ACJW was in residence at Skidmore College in Saratoga Springs, New York. While there, it gave the first public performance in the Arthur Zankel Music Center, Helen Filene Ladd Concert Hall. Ensemble members also gave lessons and master classes to the college's music students, conducted reading sessions with composers, and visited classrooms throughout the area.

Last February, a trio of final-year Academy fellows—bassoonist Bradley Balliett, pianist Gregory DeTurck, and bassist Evan Premo—started working with composer Ray Lustig; the Metropolis Ensemble and its Artistic Director, Andrew Cyr; and residents at the PSS/WSF

GrandParent Family Apartments in the Bronx on The Documentary Music Project. Fellows recorded stories by GrandParent residents and assisted them in composing their own short “documentary compositions.” Ray Lustig incorporated these shorter pieces into a larger work, and the fellows, along with the Metropolis Ensemble, performed these works at Casita Maria Center for Arts and Education on June 6, 2010.

The Academy maintains a close relationship with its 45 alumni, offering them opportunities to teach and perform in New York State and elsewhere, and to share their experiences with current fellows.

Donors

Sustaining the Legacy

In the wake of historic economic turbulence, Carnegie Hall did more than just get by this past season: It fulfilled its mission—to bring the transformative power of music to people of all ages and all walks of life—with unprecedented vigor, focus, and creativity.

All of this was possible because of the continued dedication of our supporters, who together donated \$22 million. We are deeply grateful to you for demonstrating your commitment to making the arts an essential part of all our lives.

We particularly want to give special thanks to a few people whose generosity helped to make 2009–2010 such a memorable season of discovery. Henry R. Kravis underwrote *Ancient Paths, Modern Voices* in honor of his wife, Marie-Josée; without his lead gift, this engaging, in-depth look at Chinese culture right here in New York City would not have been possible.

Similarly, Mrs. Anna-Maria Kellen and Trustee Marina K. French were instrumental in bringing the Berliner Philharmoniker and its outstanding interpretations of Brahms's four symphonies to Carnegie Hall this season.

Special thanks to Trustees Susan and Edward C. Forst, and Myra and Robert K. Kraft, Co-Chairs of our Opening Night Gala, who raised \$3 million to launch the season. We also thank Trustee Dennis M. Nally and PricewaterhouseCoopers LLP for their corporate sponsorship of the Gala for the sixth year, and congratulate Judith B. Resnick for successfully completing 10 seasons as Gala Journal Chair. Bank of America returned for its fifth consecutive year as season sponsor, a relationship that has been fostered by our Chairman, Sanford I. Weill, and two of our Trustees, Anne M. Finucane and Sallie L. Krawcheck.



Zhang Family Band | October 24

Nan Maxwell

Annual Fund



Henry R. and Marie-Josée Kravis, Yo-Yo Ma, and Angel Lam

Individuals and Foundations

Platinum Circle \$100,000 and more

Mr. and Mrs. Sid R. Bass
Mr. and Mrs. Nicola Bulgari
Yoko Nagae Ceschina
Barry Diller and Diane von Furstenberg
Dame Vivien Duffield
The Marc Haas Foundation / Helen Hotze Haas Foundation
The Irving Harris Foundation
Anna-Maria and Stephen Kellen Foundation
The Kovner Foundation
Mr. and Mrs. Henry R. Kravis
Bob and Martha Lipp
The Andrew W. Mellon Foundation
Mr. and Mrs. Kotaro ONO
The Fan Fox and Leslie R. Samuels Foundation, Inc.
Mr. and Mrs. J. M. Santo Domingo
The Peter Jay Sharp Foundation
Mr. and Mrs. Stanley S. Shuman
The Alice Tully Foundation
Mrs. Charles B. Wrightsman

\$50,000 to \$99,999

Carnegie Corporation of New York
The Enoch Foundation
Forst Family Foundation
Mr. Frederick J. Iseman
Stella and Robert Jones
Mark and Anla Cheng Kingdon Foundation
Audrey Love Charitable Foundation
Mr. and Mrs. Terry J. Lundgren
Leslie and Tom Maheras
Milton and Dorothy Sarnoff Raymond Foundation
William D. Rondina
Suki Sandler
The Morris and Alma Schapiro Fund
The Shubert Foundation, Inc.
Mr. and Mrs. A. J. C. Smith
Joan and Sanford I. Weill
Pia and James Zankel
Ms. Ann Ziff

Golden Circle \$25,000 to \$49,999

Mr. and Mrs. Robert Abrams
Linda and Earle S. Altman
The Alec Baldwin Foundation, Inc.
Mr. Frederick C. Benenson

Kyle Warner Blackmon
Mr. Ronald E. Blaylock
Mr. David Bottoms
The Ralph M. Cestone Foundation
Mr. and Mrs. Michael J. Chasanoff
The Aaron Copland Fund For Music, Inc.
Mr. and Mrs. Richard A. Debs
Jean-Marie and Elizabeth Eveillard
Mr. and Mrs. Anthony B. Evnin
Mr. and Mrs. Donald Fried
GWFF USA Inc.
Mr. and Mrs. Klaus Jacobs
Estate of Bernard Kantor
Gilbert and Lena Kaplan
Mr. and Mrs. Bruce Kovner
The Phillip and Janice Levin Foundation
A. L. and Jennie L. Luria Foundation
Mr. and Mrs. Peter W. May
Mid Atlantic Arts Foundation
Mr. and Mrs. Lester S. Morse Jr.
Henry and Lucy Moses Fund, Inc.
Linda and Stuart Nelson
Newman's Own Foundation
Edward John Noble Foundation
Barbro Osher Pro Suecia Foundation
Estate of Joseph Paff

Mr. and Mrs. William G. Parrett
Dr. Paul F. Proskauer
Susan and Elihu Rose Foundation
Mr. Jay B. Rosenberg
Marge Scheuer and Family
Mr. and Mrs. Peter William Schweitzer
Dr. and Mrs. Thomas P. Sculco
Jeanne and Herbert Siegel
Mr. and Mrs. Larry A. Silverstein
James Thurmond Smithgall
Mr. and Mrs. Howard Solomon
Seth Sprague Educational and Charitable Foundation
The Starr Foundation
Jean Stein
S. Donald Sussman
Mr. Robert L. Turner
The Weiler Fund
George and Joyce Wein Foundation
The Isak and Rose Weinman Foundation
Judy Francis Zankel
Susan and Mark Zankel

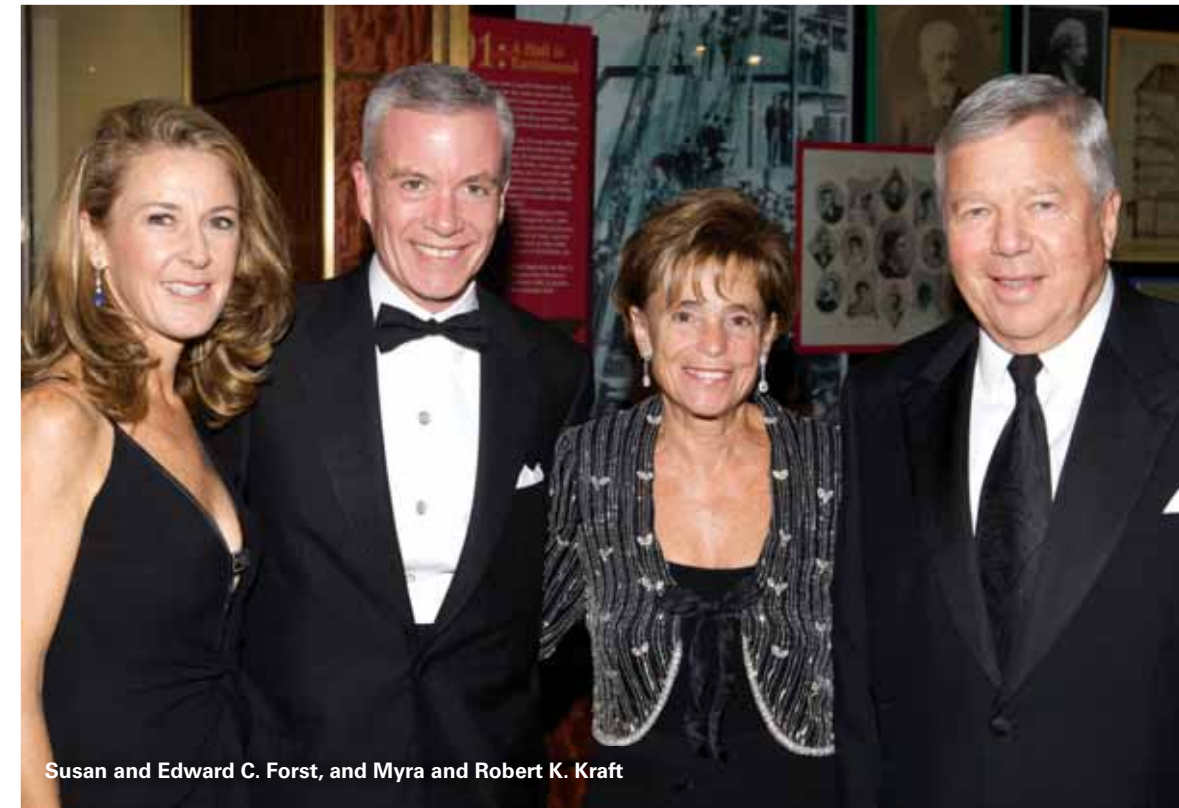
Kravises, Ma, and Lam by Chris Lee; Forsts and Kravits by Julie Skaratt.

Silver Circle \$20,000 to \$24,999

Rose M. Badgeley Residuary Charitable Trust
The Gladys Kriebel Delmas Foundation
Rosalind and Eugene J. Glaser Foundation
Mr. Andrew Martin-Weber
Judith and Burton P. Resnick
Judith Rodin and Paul Verkuil
Susan and Robert Summer
Jeanette S. and Paul A. Wagner
Mr. and Mrs. Lawrence Weinbach
Dr. Miao-Dan Wu

Chairman's Circle \$15,000 to \$19,999

Mr. and Mrs. Emanuel Ax
Mr. and Mrs. Norton Belknap
Bialkin Family Foundation
Mr. H. S. Beau Bogan and Mr. Elliot M. Friedman
Ruth and Louis S. Brause
Mr. and Mrs. Walter A. Eberstadt
Mr. and Mrs. Leonard Feinstein
Cynthia and Herbert Fields
Mr. Seth E. Frank
Clive and Penny Gillinson
Jane and Charles Goldman
Mr. and Mrs. Stephen Graham
Richard H. Holzer Memorial Foundation
Florence and Robert Kaufman
Leona and Ralph W. Kern
Mrs. Andrea Klepetar-Fallek
Deborah and Peter Lamm
Elaine and Robert LeBuhn
Mr. Arthur L. Loeb
Mrs. Nancy A. Marks
Mr. and Mrs. Thomas E. McInerney
Mr. Stephen Meringoff
Mrs. Helen Nash
In Memory of Marion Pokoik Dick
Mr. and Mrs. Harold Prince
Mr. and Mrs. Jonathan D. Resnick
The Honorable and Mrs. Felix G. Rohatyn
Mrs. Lily Safra
Mr. and Mrs. Charles J. Seidler
Robert B. Silvers
Mrs. Lee Slaughter
Hermione Foundation
The Tombros Foundation
Mr. and Mrs. Rafael Viñoly
Mary Ellen and Karl von der Heyden
Svetlana and Herbert Wachtell Foundation



Susan and Edward C. Forst, and Myra and Robert K. Kraft

Artist's Circle \$10,000 to \$14,999

Roger and Camille Abelson
Mrs. Robert Allen
Mr. and Mrs. Burnside E. Anderson, III
The Barker Welfare Foundation
Mr. Albert Behler
Mr. Kim D. Bleimann
The Brodsky Family Foundation
Mr. and Mrs. Charles R. Bronfman
Mr. Victor Chu
Linda and Arthur Collins
The Edmond de Rothschild Foundation
Deeds Foundation
Mr. and Mrs. Joseph A. DiMenna
Marjorie and Alan F. Doniger
Gaylord and Dorothy Donnelley Foundation in memory of Dr. Strachan Donnelley
Mrs. Strachan Donnelley
Jean and Louis Dreyfus Foundation, Inc.
The Max and Victoria Dreyfus Foundation, Inc.
Ella Fitzgerald Charitable Foundation
David and Tanya Fox
Barbara W. Fox-Bordiga in memory of Lord Bordiga
The L. W. Frohlich Charitable Trust
Mr. and Mrs. John D. Gilliam
Mr. Robert D. Goldfarb

Faith Golding Foundation, Inc.
Joan Harris, The Irving Harris Foundation
Carol and Howard Holtzman
Jephson Educational Trusts
Ms. Betty Wold Johnson
Ms. Frances Johnson
Karen and Kevin Kennedy
Sidney R. Knafel and Londa Weisman
Dr. Jamie Koufman
The Leon Levy Foundation
Mr. and Mrs. Daniel R. Lewis
Mr. Yo-Yo Ma and Ms. Jill Hornor
Falling Leaves Foundation Inc.
Sylvia and Leonard Marx, Jr.
Marc and Meera Mayer
Beth Goldberg Nash and Joshua Nash
Mr. Vasos Papagapitos
Mr. Kirk August Radke
Mr. and Mrs. Jonathan P. Rosen
Mr. Gil Shiva
Abraham and Beverly Sommer Foundation
Mr. and Mrs. Bernard Spitzer
Joseph A. Stern
Sir David Tang
Mr. and Mrs. Wilmer J. Thomas Jr.
The Vidda Foundation
Voice Institute of New York
Marian M. Warden Fund of The Greater Harrisburg Foundation

Mrs. John L. Weinberg
Mrs. Ruth Widder
Mr. and Mrs. Benjamin J. Winter
Chris and Lonna Yegen
Mr. Uzi Zucker

Carnegie Circle \$5,000 to \$9,999

Ms. Jacqueline Albert Simon
The Amphion Foundation, Inc.
Babbitt Family Charitable Trust
Mrs. William O. Bailey
Mr. Roger S. Berling
Mrs. Stephanie Bernheim
Peggy and Paul Bernstein
Ms. Elaine S. Bernstein
Francine J. Berry
Mr. Sam Selim Beyda
Mr. and Mrs. John P. Birkelund
Mr. and Mrs. James A. Block
Gary Brewster and Tess Mateo
Mr. Ryan Brown
Mr. and Mrs. Robert L. Burch
Mr. and Mrs. Jon M. Burnham
Mr. and Mrs. Arthur L. Carter
Mr. and Mrs. Richard Cashin
Chaffetz/Lyndsey LLP
Mrs. Betty S. Chaurize
Mrs. Marjorie Chester
Mr. and Mrs. Dominique Clavel
Mrs. Anne Cohen
Jill and Irwin B. Cohen
Yvonne and Abraham Cohen
Ms. Karen Cole



Sid R. Bass and Oscar de la Renta



Nicola and Veronica Bulgari

Michele and Terry Cone
 Mr. Leon Constantiner
 Mr. Victor Constantiner
 Edmond and Yvette Cotty
 Michael F. Cusick
 D. Ronald Daniel and Lise Scott
 Dr. Karen A. Davis and
 Dr. Eli Seifman
 Eleanor and Alvin M. Donnenfeld
 Mr. and Mrs. Douglas Durst
 Kathleen and James Egan
 Dr. Joan Eliasoph
 Mr. Stanley Epstein
 Mr. Giovanni Favretti
 Mr. David H. Feinberg
 Gideon and Sarah Gartner
 Mr. Richard Gere
 Mrs. Iva Goldwurm
 The Honorable Roy M. Goodman
 Mr. and Mrs. Harry E. Gould, Jr.
 Dr. and Mrs. Victor R. Grann
 Mr. and Mrs. Eugene M. Grant
 Mr. Jonathan K. Greenburg and
 Ms. Elizabeth Ely
 Mr. L. Jay Grossman, Jr.
 Mr. Peter Gruenberger and
 Dr. Carin Lamm
 Dorothy and Victor Han
 Lynne and Harold Handler
 Dr. Gail Hashimoto
 Curtains Up!
 Dr. Betty S. Iu
 Mr. Stuart M. Johnson
 Mr. and Mrs. Eric Kaltman
 Mr. William W. Karatz
 Mr. and Mrs. Robert Karin
 Dr. and Mrs. Robert Kavesh
 Ms. Yukako Kawata
 Ms. Jane W. Kitselman
 Cindy Knuth
 Mr. and Mrs. Daniel F. Kolb
 Dr. Barbara Kravitz
 Mr. and Mrs. Mickey Kupperman
 Sharda and Lawrence Laier
 The Lanie and Ethel Foundation
 Jo Carole and Ronald Lauder
 Mr. and Mrs. Leonard A. Lauder
 Ms. Sue Lehmann
 Mr. and Mrs. Joel Leitner
 The Irene Levoy Foundation
 Mrs. Shirley W. Liebowitz
 Ms. Francesca Liechenstein
 and Ms. Jane Riskin Bean
 Ken Lin Fund
 Michael and Ruth C. Lipper
 Litwin Foundation
 William and Diane Lloyd
 Mr. Eric J. Lomas
 Mr. David Maguire
 Mr. and Mrs. Joseph McLaughlin
 Mr. Ajai Mehta
 Mr. Robert Menschel
 Mr. and Mrs. Robert C. Mesaros
 The Miller Khoshkish Foundation
 Mr. Robert Neimeth
 Mrs. Alice Netter

Mrs. K. F. Netter
 The Elizabeth and Frank Newman
 Charitable Foundation
 Mr. Stanley Newman and
 Dr. Brian Rosenthal
 Mr. and Mrs. John A. Nielsen
 In memory of S. Kirk Norton
 Ms. Hiroko Onoyama
 Rita and Daniel Paul
 Mr. and Mrs. Edward L. Paul
 William E. Phillips and
 Barbara Smith
 Ms. Debra L. Pipines
 Mr. and Mrs. Leon B. Polsky
 Pascale and Ernest Raab
 Mr. and Mrs. Ira M. Resnick
 Allan & Reda R. Riley Foundation
 Jane and Paul Rittmaster
 Mr. David Rockefeller, Sr.
 Paulette and Joseph M. Rose
 Mr. Aby J. Rosen
 Mr. James H. Rosenfield
 Phyllis and Charles Rosenthal
 The Tom Roush Fund of the
 Funding Exchange
 Mrs. Sandra G. Saltzman
 Jack and Marianne Sauter
 Dr. and Mrs. Daniel Schapiro
 Mr. and Mrs. Gregg L. Schenker
 Alfred and Anita Schnog
 Lynn Schusterman
 Mr. and Mrs. William A. Schwartz
 Jordan B. Seaman and
 The Grateful Foundation
 Mr. Martin Selig
 Ms. Alice Shure
 Mr. and Mrs. Hardwick Simmons
 Dr. and Mrs. Peter M. Som
 Mrs. Annaliese Soros
 George T. Spera, Jr. and
 Jane Ginsburg
 Gregory St. John and Gary McKay
 Mr. Fred Stein
 Kathryn Steinberg
 Sydney and Jonathan Stern
 Mrs. Vera Stern
 Mr. James B. Stewart, Jr. and
 Mr. Benjamin Weil
 Mr. and Mrs. Peter F. Straub
 Mr. and Mrs. Edward Streim
 Lee and Roger Strong
 Mr. and Mrs. Laurence Tarica
 Wagner Thielens
 Mr. and Mrs. Jesse I. Treu
 Dr. and Mrs. Constantine
 T. Tsitsera
 Ms. Jackie Veneroso
 Linda J. Wachner
 Miriam and Ira D. Wallach
 Foundation
 Charles and Jacqueline Warren
 Mrs. Cecille Wasserman
 Jieun and David Wax
 Drs. Andrew and Nancy Weiland
 Ms. Henrietta C. Whitcomb and
 Mr. David K. Whitcomb

Mr. and Mrs. Charles O. Wood
 Ms. Dian Woodner
 Ms. Shannon Wu and
 Mr. Joseph Kahn
 Mrs. Thomas M. Wyman
 Baroness Mariuccia
 Zerilli-Marimo
 Mr. and Mrs. John W. Zick
 Ms. Audrey Y. Zucker

Carnegie Club
 \$2,500 to \$4,999

Mr. Ernest Abrahamson
 Mr. and Mrs. William H. Abrams
 Deborah and Charles Adelman
 Mr. and Mrs. Alan M. Ades
 Paul F. Adolph and
 James W. Mason
 Joseph and Jacqueline Aguanno
 Bruce Alleborn
 Ms. Whitney Arcaro
 Ms. Rita Arlen
 Ms. Norma J. Arnold
 Kathi and Peter Arnow
 Mr. Claude J. Arpels and
 Ms. Winsome Brown
 Ronald D. Arron and
 Roberta Weiner
 Ms. Martina Arroyo
 Mrs. George Asch
 David and Eugenia Askren
 Mr. and Mrs. Asselstine
 Mr. and Mrs. Paul Avrich

Enid Renz Babb
 Edwin Bacher and Johanna Weber
 Claudine and Fred Bacher
 Joseph T. Baio
 Mr. Robert Ball
 Mrs. Doris C. Kempner and
 Mr. Frederic R. Ballen
 Barbash Family Fund
 Mr. Shepard Barbash and
 Ms. Vicki Ragan
 Mr. Gregg N. Bard
 Mr. and Mrs. Richard Bassuk
 Mr. Sanford L. Batkin
 Mr. Andreas Baum
 Mr. and Mrs. Michael Beauiry
 Ms. Lisa G. Beckerman
 Susan Beckerman
 Mr. Joseph Bell and
 Mr. Peter Longo
 Mr. and Mrs. Selim Benardete
 Ms. Denise Benmosche
 Ms. Joan Benny
 Esme and Roger Berg
 Mr. Martin Berkowitz
 Allene and Ken Berman
 Sheila and Stephen Bernard
 Daniel L. and Ann L. Bernstein
 Parnassus Foundation / Jane and
 Raphael Bernstein
 Barbara and Paul Bernstein
 Helen and Robert Bernstein
 Luciano and Giancarla Berti
 Barbara and Joel Edward Bickell

Dr. Jan E. Lewis and
 Mr. Barry Bienstock
 Mary Billard and Barry Cooper
 Ms. Cynthia E. Bing
 Adrienne and Robert Birnbaum
 Ms. Jolana Blau
 Ms. Allison M. Blinken
 Mr. William Blitzer
 Mr. and Mrs. Gerald C. Bloch
 Ms. Jane S. Block
 Harvi and Bob Bloom
 Edith C. Blum Foundation, Inc.
 Ms. Rachel Bluth and
 Mr. Derek Smith
 Jane K. and Allen L. Boorstein
 Ms. Janet Malcolm Botsford
 Mr. Stuart D. Boynton
 Mr. Clifford Brand and
 Ms. Robin Lynn Alexander
 Joe W. Bratcher III
 Mr. and Mrs. David Brause
 Mr. and Mrs. Ludwig Bravmann
 Mr. John Brewer
 Dr. Rosemarie D. Bria-Levine
 Dr. and Mrs. George Brief
 Mr. and Mrs. Klaus P. Brinkmann
 Mr. David Brown and
 Ms. Helen Gurley Brown
 Elizabeth A. R. and
 Ralph S. Brown, Jr.
 Mrs. Susanne Brundige
 Ms. Lorraine Buch
 Mr. and Mrs. Leslie Buckland
 Ms. Fran Bull

Mr. and Mrs. George R. Bunn, Jr.
 Herbert and Ann Burger
 Mr. Sergey G. Butkevich
 Mr. and Mrs. Gilbert Butler
 Ms. Juliette Calayag and
 Mr. Michael Pralle
 Mr. and Mrs. Robert J. Callander
 Sandra and Michael J. Cargill
 Mr. Stephen H. Case
 Drs. Steven and Deborah Cavalier
 Century Direct
 Nestor R. Charriez
 John Mary Bernard Jacobs
 Foundation
 Mr. Theodore Chu
 Mr. Yann Coatanlem
 Mr. Steve Coffey and
 Mr. George Stirling
 Phoebe and Dr. Bernard Cohen
 Mr. and Mrs. Lewis G. Cole
 Mr. John P. Coll Jr.
 Richard Collens, MD
 Mr. Robert Comeau and
 Ms. Judy Mulder
 Elizabeth Compton and
 Eric P. Grubman
 Mr. Ronald E. Compton and
 Mrs. Nancy S. Compton
 Ruth and David Conklin
 Mr. and Mrs. Costa Constantine
 Mr. and Mrs. Kevin Conway
 Nancy and Bruce Cooper
 The Cowles Charitable Trust
 Mr. Frank J. Cracolici



Joan and Sanford I. Weill and Congresswoman Carolyn Maloney

Bass and de la Renta by Julie Skarrat, Bulgari by Craig Chesek, Weill and Maloney by Will Ragozino-Patrick, McMullan.com.

Mr. William Craig, III
 Mr. and Mrs. John R. Craig
 Dr. Michael Cucka
 Mr. and Mrs. Peter D. Cummings
 Mr. and Mrs. William Curry
 Barbara and Richard B. Dannenberg
 Ms. Elizabeth de Cuevas
 Mr. and Mrs. Gonzalo de las Heras
 Ms. Adelaide de Menil
 Gwen Deakle
 Mr. Joseph M. DeAngelo
 Mr. and Mrs. Jason DeBiasio
 Mr. and Mrs. Robert del Tufo
 Steve and Connie Delehanty
 Jennie L. and Richard K. DeScherer
 Mr. and Mrs. Jerome Deutsch
 Ms. Rosalind Devon
 Florence and Burt Diamond
 Dr. and Mrs. Stanley Dicker
 The Dickler Family Foundation
 Ms. Constance Difede
 Mr. and Mrs. Mark J. DiStefano
 Ms. Marianne Dolan
 Ms. Carol E. Domina
 Ms. Linda L. D'Onofrio
 Amit and Kalpana Doshi
 Jean and Gordon Douglas
 Drucker Associates
 John A. Dryzga
 Stephen and Judy Dunn
 Mr. Michael Dupler
 Jay and Shoshana Dweck
 Mrs. Charles H. Dyson
 William James Earle
 Mr. and Mrs. John Eastman
 Mrs. Joan K. Easton
 Dr. and Mrs. Colin S. Edwards
 Mr. Jay K. Egelberg
 Mr. and Mrs. Alvin H. Einbender
 Rabbi Barat Ellman and Jay Golan
 Mr. and Mrs. George Elvin
 Mrs. Thomas Enders
 Mr. and Mrs. Alan S. Englander
 Jules and Joan Epstein
 Ms. Gail Erickson
 Mr. Otho Eskin
 Mr. Rafael Etzion
 Peter and Joan Faber
 Mr. and Mrs. Leroy Fadem
 Fiona Morgan Fein
 Mr. Kenneth Feinberg
 Norman Feit
 Mrs. Hortense Feldblum
 Dr. and Mrs. Bernard Ferrari
 Gilbert and Anita Fields
 Mrs. Roberta Fine
 Susie and Charles Finkel
 Mr. Charles Fitzgerald
 Mr. and Mrs. Arthur Fleischer
 Ms. Barbara G. Fleischman
 Ona and Richard Fleming
 Mr. and Mrs. Donald Fox
 Andrew J. Frackman and Emily Braun
 Mr. Andrew C. Freedman
 Mr. and Mrs. Jeffrey Friedman
 Gerald L. and Sheree A. Friedman

Florence Frucher
 Patrick Gallagher and Robert Watson
 Sally and James Gambrell
 Mr. and Mrs. Edward L. Gardner
 Jim and Yukiko Gatheral
 Dr. Merwin Geffen and
 Dr. Norman Soloman
 Alexis Gelber and Mark Whitaker
 Reverend Carlson Gerdau
 Dr. Claude Ghez
 Ms. Françoise Girard
 Jerry Gladstein
 Edythe and Mike Gladstein
 Ms. Marilyn Glass
 Mr. and Mrs. Chester Glucroft
 Ciril and Suzanne Godec
 Mr. Martin Gold
 Mr. Alexander Goldberg
 Susan L. Goldfine, MD
 Ms. Miriam Goldman
 Mr. David M. Goldman
 Patricia and Bernard Goldstein
 I. Michael Goodman and Judith Uman
 Mr. and Mrs. Peter B. Goodrich
 Mr. John Goodrich
 Michael and Sally Gordon
 Mr. Brian Gorman
 Stephanie Goto
 Dr. Harold Gotthelf
 Phillip and Rivka Greenberg
 Mrs. Jean Greenfield
 Monika and Peter Greenleaf
 Mr. and Mrs. James L. Greenwald
 Mr. and Mrs. Mark Gregorio
 Mr. and Mrs. Mark Grinis
 Mr. Peter M. Gross
 Mrs. Carol Grossman
 Mrs. Marit G. Gruson
 Susan Gullia
 Ms. Gunilla N. Haac
 Anne and John Hall
 Mimi Halpern
 Ms. Janice M. Hamilton
 Mr. and Mrs. Jerry S. Handler
 Dr. Bjorn and Catherine Hanson
 Mrs. Isabel Harnoncourt Feigen
 Susan T. and Charles E. Harris
 Dr. Lynne Harrison
 Mr. Frank Heller and
 Mr. Christian F. Steiner
 Kathy and Jonathan Herman
 Marifé Hernandez and Joel Bell
 Ms. Adriana Herrera Bedoya
 Terry Stamler Herst in memory of
 Sylvia Fisch Stamler Ginsberg
 Ms. Marilyn Hewitt
 Mr. and Mrs. William Hickey
 Adria and Donald Hillman
 Michael Himmel
 Ellen and David S. Hirsch
 Ms. Susan B. Hirschhorn and
 Mr. Arthur M. Klebanoff
 Ms. Susan E. Hochberg
 Drs. Ira R. and Ruth W. Hoffman
 Judith M. and Richard S. Hoffman
 Pamela J. Hoiles

Elizabeth Holland and Ronald Vogel
 Ms. Joan Holmes
 Steven and Lesli Hornstock
 Mr. and Mrs. Frederic K. Howard
 Mr. Jerry Howett
 Mr. Jim Huang
 Mrs. Richard August Huberty
 Mr. and Mrs. William R. Huff
 Mr. Timothy Hughes
 Ms. Cristina Incisa di Camerana
 Carol T. Ivanick
 Andrew Jackson and Dale M. Lovelock
 The Nathan P. Jacobs Foundation
 Carl Jacobs Foundation
 Rosalind and Bruce Jacobs
 Marti and Ray Jacobs
 Mr. and Mrs. Julian Jadow
 Mr. and Mrs. Morton L. Janklow
 Mr. and Mrs. Floyd H. Jayson
 Andreas and Nele Jessel
 Mr. Robert D. Jezowski
 Eric and Olga Jorgensen
 Barbara Haws and William Josephson
 jpl
 Robert Jurgrau
 Elliott Kaback and Patricia Woodard
 Barbara and Ernest Kafka
 Ms. Connie Kaiserman Robinson and
 Mr. Steven Robinson
 Mr. and Mrs. Charles A. Kalman
 Hester Diamond and Ralph Kaminsky
 Leonard and Alice Kandell
 Ms. Carolyn Kane
 Karma Foundation
 Anonymous
 Elliot and Adrienne Katz
 Mr. Neil C. Katz
 Bill and Paulette Kaufmann
 Mr. and Mrs. Earle W. Kazis
 Mr. and Mrs. Thomas F. Kearns, Jr.
 Mr. William S. Keating
 Ms. Kathryn Keneally and
 Mr. Thomas M. Marshall
 Ms. Gail Kendall
 Ms. Edythe Kenner
 Ms. Irene King
 Dr. and Mrs. Jay Ward Kislak
 Mr. William Kistler
 Helene and Charles Klein
 Lisa Klein and Timothy Kinsella
 Mr. and Mrs. Winthrop Knowlton
 Dr. June H. Koizumi
 Judith and Jonathan Kolker
 Helen and Jules Kornblau /
 The Kornblau Family Foundation
 Mr. and Mrs. Charles Kolozsvary
 Mr. and Mrs. Yelena Kourtei
 Victor and Sarah Kovner
 Mr. Jonathan Kowolik
 Daniel and Joan Kram
 Caroline and Mark Krentzman
 Dorothy Kryger
 Sheldon and Rita Kwiat
 Ms. Elissa LaBagnara
 Mr. and Mrs. Joseph Lagana
 Mr. and Mrs. James Lally



Sam and Lynn Waterston, Ann Ziff, and Keith Miller



Sanford I. Weill, Evgeny Kissin, and Clive Gillinson



Lester S. Morse Jr., Marina K. French, Anna-Maria Kellen, and Dinny Morse

Mr. and Mrs. Fernand Lamesch
 Mr. and Mrs. W. Loeber Landau
 Mr. Steven E. Lane
 Mr. Jonathan Larsen
 Ms. June T. Leaman
 Ms. Melissa Leapman
 Mr. and Mrs. Robert E. Lee III
 Mr. and Mrs. Paul H. Lee
 Ms. Carol Leibenson
 Mr. and Mrs. Jacques E. Lennon
 Kurt F. Leopold
 Mr. and Mrs. William M. Lese
 Mr. and Mrs. Joseph S. Lesser
 Mr. Kenneth D. Levien and
 Ms. Debra Torres
 Mr. and Mrs. Jerry and Alisa F.
 Levin
 Noel Levine
 Mrs. Marion H. Levy
 Mr. and Mrs. Victor P. Levy
 Leslie and Jim Levy
 Mr. William J. Levy
 Mr. Dylan H. Lewis
 Dr. Carl M. Lieberman
 Mr. Randall K. Liken and
 Mr. Stephen P. Svoboda
 Mr. and Mrs. Samuel H.
 Lindenbaum
 Margot and Robert Linton
 Ms. Dorothy Litwin
 Pamela and Arnold Loeb
 C. Darrow and A. Lombardi
 Mr. Anthony Lombardo
 Mrs. Joan C. Long
 Mr. and Mrs. Sherif Lotfi
 Ilene and Edward Lowenthal
 Dr. DiAnn L'Roy
 Joyce Feinberg Luchtenberg
 Lundsten-O'Donnell
 Advisory Group
 Mr. and Mrs. Samuel Lurie
 Dr. Laura Lustig
 Mr. and Mrs. Merritt M. Lutz
 Mr. Richard Lynn and
 Mr. Joseph Evall
 Mr. and Mrs. Michael J. Lyons
 Mrs. Maria N. Lyras
 Mr. Archie Mac Gregor
 Mrs. Lorraine Machiz
 Terry Maher and Maxim Koslow
 Richard H. M. and Gail Lowe
 Maidman
 Mrs. Susan Malloy
 Ms. Virginia Mancini
 Judith and Michael Margulies
 Alexander R. and Hedvig Margulis
 Ms. Monica Markowicz
 Edwina and Marvin Marks
 Mr. and Mrs. David E. Marrus
 Mr. and Mrs. James P. Martin
 Mr. and Mrs. Shigeki Masui
 Mr. and Mrs. Richard L. Mayer
 Mr. and Mrs. Peter McCall
 Mr. Joseph F. McCrindle
 Mr. Scott McDonald
 Brian P. McGrath

Kathleen A. McKenna
 Mr. and Mrs. Martin McKerrow
 Fundacion Meijer-Werner
 Mrs. Vivian Merrin
 Dr. Ricardo Mesa-Tejada and Dr.
 Amy Mesa-Jonassen
 Mrs. Stanis Mihm
 Mr. Edward J. Miller
 Mr. and Mrs. Everett B. Miller, III
 Irwin and Frances Miller
 Mr. and Mrs. Jonathan Miller
 Mr. and Mrs. Robert E. Mims
 Mr. and Mrs. Joseph S. Lesser
 Sandra and Lowell Mintz
 Mr. and Mrs. Steven Miron
 Ms. Yuriko Mita
 Ms. Adriana Mnuchin
 Mr. Randy Modell
 Mr. Eben Moglen
 Karl Moller
 Teresa and Martin Monas,
 in Honor of Barbara Cook
 Mr. Daniel Montilla
 Ms. Barbara Moore
 Mr. and Mrs. Thomas Moore
 Dr. Diana Moore
 Mrs. Suzanne Mosby
 Paula and Gerard Munera
 Foundation
 Paul S. Nadler Family
 Charitable Trust
 Mr. Stefano Natella
 Mr. Joseph F. Nazitto
 Mr. and Mrs. George A. Needham
 Margaret and Richard Neimeth
 Mr. and Mrs. Mitchell J. Nelson
 Ms. Lynn Nesbit
 In memory of Gabor Neumann
 Mrs. Claude Nicaise
 Roy Niederhoffer and Kara
 Unterberg
 Mr. John E. Oden
 Ms. Dianne O'Donnell
 Mr. and Mrs. Harold H. Oertell
 Mr. and Mrs. Kobi Offer
 Daniel and Rebecca Okrent
 Henna Ong and Peter D. Lawrence
 Mr. Morris A. Orden
 Ms. Paula Sarnoff Oreck
 Mr. David Orr and Mr. Brant Wong
 Ms. Esra Ozer
 Mrs. Charles W. Pachner
 Dr. Anthony Paciello and
 Dr. Dianne Rose
 Mr. and Mrs. Alex B. Pagel
 Mrs. Hannah C. Pakula
 Michael and Gabrielle Palitz
 Ms. Maria Louisa Palmese
 Mrs. Frank Papp
 Reverend and Mrs. Everett C.
 Parker
 Mr. and Mrs. David Parker
 Grace M. Parr
 Mr. and Mrs. Adolfo Patron
 Stephen Payne
 David B. Pearce, MD



Chancellor Joel I. Klein and Nicole Seligman



Marilyn Horne and Martina Arroyo



Alan P. Safir and Burton P. Resnick

Mrs. Stephen M. Peck
Arnold S. Penner, Esq., and
Madaleine Berley
Victoria and Robert Pennoyer
The AJ Perella Foundation
Barbara and Louis Perlmutter
Jerilyn and Brian Perman
Hollis Anne Petrocchi
Ms. Eileen Pettus
Ms. Antonia P. Pew
Mr. and Mrs. David L. Pickett
Evan Picoult
Penny and Claudio Pincus
Burton Yale Pines and
Helene Brenner
John A. Pirovano
Mr. Jules L. Plangere, III
Mr. Rene Plessner
Mr. and Mrs. James Pohlman
Ms. Tara E. Polen
Mr. and Mrs. Sidney J. Pollack
Mindy Pollack
Mr. Myles Pollin
Mr. Robert Poulos

Dr. Robert Press
Dr. and Mrs. Peter Pressman
Mrs. Jessie Hunter Price
Mr. Josh Prottas
Mark Ptashne and Lucy Gordon
Stephen S. Rabinowitz, Esq.
Mr. William Raff
Mr. John Raphael
Charles J. Raubichek and
Ann S. Macdonald
Isabella del Frate Rayburn
Mrs. Dina Recanati
Mr. Gregory R. Reed
Mr. Craig Reicher
Dana and Richard Reimer
Ms. Catherine A. Rein
The Karl F. Reuling Fund
Mrs. Sibylle Reyniak
R. Douglass Rice and
AnneMarie Alexander
Stuart I. Rich and Jennifer Busch
Nataly and Toby Ritter
Ms. Karen Robarge
Mr. Alan Robbins

Pilar and Stephen Robert
Mr. and Mrs. Donald Roberts
Sondra Kurtin Robinson
Mr. and Mrs. Gerald T. Rolfe
Mr. and Mrs. Kenneth Roman
Susan Pinsky and Marc Rosen
Mr. and Mrs. Joseph Rosen
Mrs. Liz Rosen
Ms. Sonia Rosenbaum
Mr. and Mrs. Joseph B. Rosenblatt
Dr. Rosemary Purrazzella and
Dr. Marc Rosenblum
James R. & Frederica
Rosenfield Foundation
Robert Rosenkranz and
Alexandra Munroe
Judith and Michael Rosenthal
Mitsuko and David Rosinus
Clara and Irwin Roth
Mr. Richard Roth
Mr. William Roth
Michael and Juliet Rubenstein
Jacqueline and George Rubin
Mr. and Mrs. LeRoy Rubin

Mark and Tracy Rudd
Mr. Eric C. Rudin
Mr. and Mrs. William M. Rudolf
Jon Rupp
Mr. and Mrs. William J. Sales
Dr. and Mrs. Eduardo A. Salvati
Alan Salz and Brad Whitehurst
Mr. and Mrs. Suresh Sani
Mr. Ray Santelises
Mr. and Mrs. Lawrence Saper
Rosita Sarnoff and Beth Sapery
Mr. Antoine Schetritt
Jill D. Schildkraut-Katz
and Steven Katz
Mr. and Mrs. Edmund Schroeder
Mr. and Mrs. Gerhard Schulmeyer
Mrs. Arthur D. Schulte
Mr. Béla Schwartz and
Ms. June Zimmerman
Joan C. Schwartz Philanthropic
Fund
Ms. Barbara A. Scott and
Ms. Shirley E. Scott

Klein and Seligman, Safir and Resnick, and Durants by Julie Skarrat; Horne and Arroyo, and Bialkin, Koepfel, and Hsiao by Craig Chesek; Princess Madeleine and Perelman by Steve J. Sherman.

Rhoda & Louis Scovell Charitable
Foundation Fund
NoraLee and Jon Sedmak
Mr. and Mrs. Herbert L. Seegal
Janet Z. Segal and Family
Mr. and Mrs. Robert E. Segal
Aland and Edith Seligson
Mrs. Richard Selle
Barbara and Kenneth Seplow
Nathan and Vivian Serota
Dr. Wales Shao
Mr. Stephen J. Shapiro and
Dr. Amy Attas
Selma Shapiro and
James H. Silberman
Dr. Ronda Shaw and
Dr. Alan Zients
Marion and William Shulevitz
Mr. Michael Shvo
Mr. David M. Siegel and
Ms. Dana Matsushita
Dr. Ellen Silverstein
Mark E. and Roberta K. Simon
Mrs. Linda G. Singer
Mr. Paul Singer
Mr. and Mrs. James B. Sitrick
Mr. and Mrs. F. Randall Smith
Katherine and Kenneth Snelson
Mr. and Mrs. Gilbert L. Snyder
Ms. Denise R. Sobel and Mr.
Norman K. Keller
Mr. Dimitri Sogoloff
Dr. Helen Sogoloff
Mr. and Mrs. Paul Soros
Dr. Thomas A. Sos and
Dr. Shelley Wertheim
Mr. and Mrs. Joseph M. Stafford
Dr. Axel Stawski
Joanna T. Steichen
Sissy and Gary Stein
Linda B. Stern
Leonore and Walter Stern
Mr. and Mrs. Trevor Stewart
Drs. Barry and Barbara Stimmel
Mr. and Mrs. Neal R. Stoll
Bev and Walt Streuli
Ms. Shining Sung
Mr. and Mrs. Dennis Swanson
Mr. and Mrs. I. David Swawite
Ms. Helen M. Swinton
Ms. Marcy Syms
Gloria and Philip Talkow
Mr. and Mrs. David J. Tananbaum
Mr. and Mrs. Harold Tanner
Mr. and Mrs. Henry Taub
Mr. and Mrs. Willard B. Taylor
Priscilla and Jerome Teich
Mr. and Mrs. Barron Tenny
Elise C. and Marvin B. Tepper
David H. Thierman, MD
Dr. Gary Thom, in memory of
Mother
Mr. and Mrs. Petr A. Thorson
Mr. Jonathan M. Tisch
Donna Peck and Michael Tolan
Ms. Carol H. Tolan

Mr. Michael Tomasko, IV
Mr. Michael Tubbs
Gerald F. Tucci
Ms. Helen Sonnenberg Tucker
Mr. and Mrs. John Tully
Lindsey Turner
Barbara A. and William F. Tyree
Mr. and Mrs. Jean-Paul Valles
Mr. and Mrs. William J. vanden
Heuvel
Dr. and Mrs. Gary E. Veith
Dr. Carlin B. Vickery and
Mr. James Capalino
Mr. and Mrs. Tom Volpe
The Rudolph & Lentilhon G. von
Fluegge Foundation, Inc.
Ms. Susan Vultaggio
Ms. Ruth M. Wagner
Ms. Elizabeth S. Wahab and
Mr. Haitham Wahab
Susan Walker and Harry Salwen
Ms. Nora Ann Wallace and
Mr. Jack Nusbaum
Linda and Jay L. Wallberg
Terilynn and Jeff Walsh
Jon Alon Walz
Ms. M. Terri Poli and
Mr. J. Craig Weakley
Evelene Wechsler
Rebecca and William Weeks
Marie-Helene Weill
James L. Weinberg
Mr. and Mrs. Michael F. Weinberg
Mr. Oliver Weiner
Mr. and Mrs. Martin S. Weinstein
Ms. Doreen Weisfuse and Mr.
Martin Weisfuse
Linda and Steve Weiss
Mr. and Mrs. Peter Weiss
Mr. Alberto Weisser
Ms. Gayle W. Welling
Joan Westz and Arthur Field
Neil Westreich
Mr. Peter Wexler
Mr. and Mrs. Robert R. Wiener
Ms. Jessica Willis
Mr. Richard M. Winn III
Mr. David Winoker
Mr. and Mrs. David S. Winter
Ms. Judy Witt
Miss Elizabeth Wohlgenuth
Mr. and Mrs. Irving M. Wolbrom
Jacqueline and Cary Wolf
Mary C. Wolf
Mr. and Mrs. William T. Wolf
Jay N. and Susan Woodworth
Corey Worcester and
Yasmine Legendre
Mrs. Ruth Wright
Mr. and Dr. Leonard H. Yablon
Peter Young and Merit E. Janow
Ms. Shiley Young
Alice F. Yurke and Robert H.
Davis, Jr.
Ms. Gloria Zeche
Merryl and Charles Zegar



Princess Madeleine of Sweden and Ronald O. Perelman



Jill and Gregory T. Durant



Kenneth J. Bialkin, Howard Koepfel, and Mark Hsiao

Corporations

\$100,000 and above

Bank of America
Continental Airlines
Deloitte LLP
Ernst & Young LLP
KPMG LLP
The McGraw-Hill Companies
Sony Corporation of America
Target

\$50,000 to \$99,999

Agricultural Bank of China
China Merchants Bank
Chubb Group of Insurance Companies
DeWitt Stern Group, Inc.
Hong Kong Economic and Trade Office, New York
Jaguar
MetLife Foundation
Orrick, Herrington & Sutcliffe LLP
Roche

\$30,000 to \$49,999

Aon Risk Services
Mitsubishi International Corporation
Mizuho Securities USA Inc.
Morgan Stanley
Toshiba Corporation
Toyota Motor North America, Inc.

\$20,000 to \$29,999

Ameriprise Financial
Credit Suisse
The Estée Lauder Companies Inc.
Pfizer Inc.

\$12,000 to \$19,999

BBDO Worldwide
UBS
The Walt Disney Company

\$6,000 to \$11,999

Arnhold and S. Bleichroeder Holdings, Inc.
Con Edison
Fenway Partners, Inc.
ITOCHU International Inc.
J.C.C. Fund of the Japanese Chamber of Commerce and Industry of New York, Inc.
Johnson & Johnson
Sumitomo Corporation of America
Universal Music Classical
Xerox Corporation



Carnegie Hall salutes Bank of America, proud season sponsor of the 2009–2010 season.



Lang Lang, Marie-Josée Kravis, Michael Tilson Thomas, Henry R. Kravis, and Chen Qigang

\$2,500 to \$5,999

Colgate-Palmolive Company
Mitsubishi Heavy Industries America, Inc.
Yamaha Corporation of America

\$2,499 and below

Marubeni America Corporation
Mercer Health & Benefits
Richloom Fabrics Group, Inc.
SD&A Teleservices, Inc.
VSP Vision Care

Japan Council

Deloitte Touche Tohmatsu
Mitsubishi International Corporation
Mizuho Securities USA Inc.
Morgan Stanley
Nomura Holding America Inc.
Sony Corporation
Toshiba Corporation
Toyota Motor North America

Government

Empire State Development Corporation
National Endowment for the Arts
National Endowment for the Humanities
New York City Council
New York City Department of Cultural Affairs
New York City Department of Design and Construction
New York City Department of Education
New York State Council on the Arts
New York State Office of Parks, Recreation and Historic Preservation
New York State Senate
Office of the Manhattan Borough President
United States Department of Education, Fund for the Improvement of Education
United States Department of State, Bureau of Educational and Cultural Affairs

Special Events

Thursday, October 1, 2009

Opening Night Gala of Carnegie Hall's 119th Season

Boston Symphony Orchestra
Daniele Gatti, Conductor
Evgeny Kissin, Piano
Ann Hobson Pilot, Harp

Gala Chairs

Susan and Edward C. Forst
Myra and Robert K. Kraft

Opening Night Gala Sponsor

PricewaterhouseCoopers LLP

Gala Journal Chairman

Judith B. Resnick

Gala Journal Sponsor

Macy's and Bloomingdale's

Special thanks to *Town & Country* magazine and The Hearst Corporation

Thursday, April 1, 2010

Bravissimo! Opera Gala

Sondra Radvanovsky, Soprano
Dmitri Hvorostovsky, Baritone
Marco Armiliato, Conductor
National Philharmonic

Co-Chairs

Martina Arroyo
Marilyn Horne
Frederick J. Iseman
Roberta Peters
Ann Ziff

May 20, 2010

Discovering Music

A luncheon to benefit the music education and community initiatives of the Weill Music Institute at Carnegie Hall

Host

Paula Zahn, Journalist

Musical Performance

Musical Explorers: My City, My Song

Celebrating the first- and second-grade program of the Weill Music Institute

Honorary Co-Chair

Laura H. Pomerantz

Co-Chairs

Kim Blank | Susie Davis | Betty Ende | Sylvia Ende
Allison Fehrenbaker | Andrea Pomerantz Lustig | Christine Mack
Phyllis Mack | Marnie MacLean | Leslie Maheras | Joan Picket
Marc Seidman | Joan H. Weill | Jennifer Zonis

Underwriters

Mercedes and Sid R. Bass | Mark E. Kingdon | The William and Phyllis Mack Family Foundation | Leslie and Thomas G. Maheras
Leni and Peter W. May | Sony Corporation of America



Discovering Music Co-Chairs: Kim Blank, Jennifer Zonis, Phyllis Mack, Joan Picket, Allison Fehrenbaker, Susie Davis, Andrea Lustig, Laura H. Pomerantz, Paula Zahn, Betty Ende, Marci Seidman, Sylvia Ende, and Leslie Maheras

For the fourth consecutive season, Paula Zahn hosted our annual Discovering Music Luncheon, benefitting Carnegie Hall's music education initiatives. Laura H. Pomerantz was the Honorary Chair of this year's luncheon, which focused on WMI's Musical Explorers program and featured a performance by students from

PS 22 of Staten Island. Trustees Frederick J. Iseman and Ann Ziff chaired a new gala event, *Bravissimo!*, featuring Dmitri Hvorostovsky and Sondra Radvanovsky in top voice; a pre-concert discussion with Trustees Martina Arroyo and Marilyn Horne delighted guests.

Monday, June 7, 2010
Fourth Annual Medal of Excellence Gala

Honoree

Henry T. Segerstrom
Managing Partner of C. J. Segerstrom & Sons,
developer of South Coast Plaza
Founding Chairman of Orange County
Performing Arts Center

Honorary Chairs

Sanford I. Weill
Chairman Emeritus, Citi
Chairman, Carnegie Hall

The Honorable Arnold Schwarzenegger
Governor of the State of California

Award Presentation

Terry J. Lundgren
Chairman, President, and Chief Executive Officer,
Macy's, Inc.

Musical Performance

Denyce Graves, Mezzo-Soprano
 Warren Jones, Pianist

Honorary Artist Chair

Valery Gergiev

Honorary Artist Co-Chairs

Mikhail Baryshnikov | Joshua Bell
 Plácido Domingo | Renée Fleming
 William Friedkin | Frank Gehry | Helmut Jahn
 Lang Lang | Charles Lawrence | Anna Netrebko
 The Noguchi Museum | I. M. Pei | César Pelli
 Richard Serra | Robert Wilson | Michael York

Academic Chair

Garth Saloner, PhD
Dean, Stanford Graduate School of Business

Co-Chairs

JMB Realty Corporation
 Mr. and Mrs. Donald M. Kendall
 Terry J. Lundgren
 Elizabeth and Henry T. Segerstrom
 South Coast Plaza

Lead Corporate Sponsor

Jaguar



Terry J. Lundgren, Renée Fleming, Sanford I. Weill, and Elizabeth and Henry T. Segerstrom

Carnegie Hall honored Henry T. Segerstrom—Managing Partner of C. J. Segerstrom & Sons, developer of South Coast Plaza, and Founding Chairman of the Orange County Performing Arts Center—at its Medal of Excellence Gala at The Waldorf=Astoria in June. Trustee Terry J. Lundgren, the 2008 recipient, presented the award, and the event raised \$1.4 million. Sanford I. Weill and Governor Arnold Schwarzenegger were honorary co-chairs, and Mayor Michael Bloomberg recognized Mr. Segerstrom with a proclamation honoring the inaugural year of Carnegie Hall's partnership with the Segerstrom Center for the Arts.

Continental Airlines | Crabtree & Evelyn | Guerlain Spa | Hotel Le Bristol
 Hilton Arc de Triomphe Paris | IRCAM | Jaguar | Marketa Shop
 American Friends of the Paris Opera and Ballet | Paris Walks
 Pomegranate Communications, Inc. | Richard Tucker Music Foundation
 Taschen | Terra d'Oro Winery | The Waldorf=Astoria

During the 2009–2010 season, Carnegie Hall's special events received in-kind support of products and services from the following companies and individuals.

The Andrew Carnegie Society

The Andrew Carnegie Society honors donors who have made leadership gifts to support the restoration, renovation, and expansion of Carnegie Hall, and to augment the endowment fund in support of artistic programming and music education.

\$5,000,000 or more

Mr. and Mrs. Sid R. Bass
 Citi Foundation
 City of New York
 Mr. and Mrs. Richard A. Debs
 Perelman Family Foundation
 Judith and Burton P. Resnick
 The Honorable and
 Mrs. Felix G. Rohatyn
 Marge and Walter Scheuer
 and Family
 The Starr Foundation
 State of New York
 United States Department
 of Education
 Joan and Sanford I. Weill
 Judy and Arthur Zankel
 Estate of Arthur Zankel

\$2,500,000 to \$4,999,999

Deloitte LLP
 The Horace W. Goldsmith
 Foundation
 Mr. and Mrs. Klaus Jacobs
 Anna-Maria and Stephen Kellen
 Foundation
 Leni and Peter May
 Mr. and Mrs. Lester S. Morse Jr.
 Mr. and Mrs. William G. Parrett
 William D. Rondina
 Susan and Elihu Rose Foundation
 Mr. S. Donald Sussman
 Uris Brothers Foundation, Inc.
 Mr. and Mrs. James D. Wolfensohn

\$1,000,000 to \$2,499,999

Linda and Earle S. Altman
 The Vincent Astor Foundation
 AT&T
 Mr. and Mrs. Ralph M. Baruch
 Mr. and Mrs. Kenneth J. Bialkin /
 Skadden, Arps, Slate, Meagher
 & Flom
 J.P. Morgan Chase & Co.
 Credit Suisse
 Estate of Joanne Toor Cummings
 Luella and Martin Davis
 Deutsche Bank
 Mr. and Mrs. Anthony B. Evnin
 Fomento Cultural Banamex Fund
 for International Education
 Mr. and Mrs. Gordon P. Getty

Jean & Jula Goldwurm Memorial
 Foundation
 The William Randolph Hearst
 Foundation
 Claudia and Roberto Hernández
 Ramirez
 Maria Olivia and Jim Judelson
 Gershon Kekst, Kekst and
 Company, Inc.
 Mark and Anla Cheng Kingdon
 Foundation
 KPMG LLP
 Mr. and Mrs. Henry R. Kravis
 The Kresge Foundation
 Bob and Martha Lipp
 Macy's and Bloomingdale's
 The Marma Foundation Fund
 for Youth Education
 The Andrew W. Mellon Foundation
 Lauren and J. Ezra Merkin
 The Ambrose Monell Foundation
 Beth Goldberg Nash and
 Joshua Nash
 National Endowment for the Arts
 Natural Heritage Trust
 The Lizabeth and Frank Newman
 Charitable Foundation
 Pepsi-Cola Company
 John & Louise Reuter Trust
 The Rockefeller Foundation
 Edward John and Patricia
 Rosenwald Foundation
 Jack and Susan Rudin in memory
 of Lewis Rudin
 The Fan Fox and Leslie R.
 Samuels Foundation, Inc.
 Henry and Elizabeth Segerstrom
 Mr. and Mrs. Arthur T. Shorin
 Henry Shweid and Margaret
 Munzika Shweid Trust, Robert
 J. McCarthy, Trustee
 Sony Corporation of America &
 Sony Music Entertainment Inc.
 Jerry I. Speyer and Katherine G.
 Farley
 Mr. and Mrs. Isaac Stern
 The Tishman Fund for Education
 through Technology
 The Alice Tully Foundation
 U.S. Department of Housing and
 Urban Development
 Verizon Foundation
 Alberto Vilar
 Linda J. Wachner and Warnaco Inc.
 The Weiler Fund
 Mrs. Charles B. Wrightsman



Gregg and Lisa Schenker



Mary and John W. Zick

Zankel Charitable Lead Trust
 The Bill and Ann Ziff Foundation
 Anonymous

\$500,000 to \$999,999

American Express
 Audi of America, Inc.
 Booth Ferris Foundation
 CIBC Oppenheimer
 Continental Airlines
 Charles E. Culpeper Foundation,
 Inc.
 The Eleanor Naylor Dana
 Charitable Trust

George David
 The Diller-von Furstenberg
 Family Foundation
 Estate of Mrs. Eugenia Doll
 The Sherman Fairchild
 Foundation, Inc.
 Federated Department Stores
 Foundation
 FleetBoston Financial
 Fribourg Foundation Inc. and
 Mr. and Mrs. Raphael Recanati
 Estate of Rita L. Gluck
 The Marc Haas and Helen Hotze
 Haas Foundations

Lundgren, Fleming, Weill, and Segerstroms, and Zicks by Julie Skarlat; Schenkers by Craig Chesek

The Marilyn Horne Foundation
Mr. and Mrs. Carl C. Icahn
Stella and Robert Jones
Gilbert and Lena Kaplan
The J.M. Kaplan Fund, Inc.
Diane G. Kranz
Lincoln-Mercury
Mr. and Mrs. Thomas G. Maheras
Marsh & McLennan Companies,
Inc.
The McGraw-Hill Companies
Merrill Lynch & Co., Inc.
Metropolitan Life Foundation
Mrs. Milton Petrie
The William Petschek Family
The Pew Memorial Trust
The Pincus Family Fund
The Joe Plumeri Foundation
Laura and John Pomerantz
PricewaterhouseCoopers
Mr. and Mrs. Oscar de la Renta
Rockefeller Brothers Fund
Suki and Herman Sandler
Mr. and Mrs. Peter William
Schweitzer
The Peter Jay Sharp Foundation
Mr. and Mrs. Stanley S. Shuman
The Sirius Fund
Mr. and Mrs. A.J.C. Smith
Miriam Solovieff
Estate of Marie Steiner
Suntory International Corp.
Viacom Inc.
Estate of Elisabeth P. Wendell
Mr. and Mrs. John W. Zick

\$250,000 to \$499,999

Andersen Worldwide
Automatic Data Processing, Inc.
(ADP)
The Barker Welfare Foundation
Mr. and Mrs. Norton Belknap
CBS Inc.
Cleary, Gottlieb, Steen &
Hamilton
Mr. and Mrs. Paul J. Collins
The Leonard and Sophie Davis
Foundation, Inc.
The Irene Diamond Fund, Inc.
Mr. and Mrs. Charles H. Dyson
Ernst & Young LLP
Exxon Corporation
Mr. and Mrs. Zachary Fisher
Mr. and Mrs. Wolfgang K. Flöttl
Genatt Associates, Inc.
The Florence Gould Foundation
The Armand Hammer Foundation
The Heckscher Foundation for
Children
IBM Corporation
Geron P. Johnson Foundation, Inc.
Addie and Tom Jones
Helen and Martin Kimmel
John S. and James L. Knight
Foundation
In memory of David and Nora
Leseine
Bella and Leonard Linden
Mr. and Mrs. Terry J. Lundgren
Sir Deryck and Lady Maughan
Betty Anne and James R. McManus
Henry and Lucy Moses Fund, Inc.
Rupert Murdoch
News America Publishing, Inc.

The New York Times Company
Foundation, Inc.
Stavros S. Niarchos Foundation
Paramount Communications, Inc.
Pfizer Inc.
Philip Morris Companies Inc.
Chuck Prince and Peggy Wolff
In memory of Martha and
Eva Rautenberg
Reliance Group Holdings Inc.
Lloyd E. Rigler and Lawrence E.
Deutsch
Billy Rose Foundation, Inc.
Jack and Susan Rudin Educational
and Scholarship Fund
May and Samuel Rudin Family
Foundation, Inc.
Estate of Darwin F. Schaub
S. H. and Helen R. Scheuer
Family Foundation, Inc.
Dr. and Mrs. Thomas P. Sculco
Mr. and Mrs. Constantine
Sidamon-Eristoff
Esther Simon Charitable Trust
Robert E. Simon Jr.
In honor of Rudolf G. and
Inger-Ma Sonneborn
Estate of Maria M. Stivelman
Estate of Lucien Thomson
Tobishima Associates, Ltd.—
The Stanhope Hotel
United States Department of State
United Technologies
Corporation / Otis Elevator
Veronis Suhler Stevenson
Vivendi Universal
Craig and Connie Weatherup
John C. Whitehead

Mr. and Mrs. Lawrence A. Wien
Hyman, Mildred, Arthur and
Elliot Wiener Family
Willkie Farr & Gallagher
Ivy Wu
Anonymous

\$100,000 to \$249,999

ABD Securities Corporation
The Agvar Fund
Alcoa Foundation
ARCO Foundation
A.S.M. Mechanical Systems/
Richard Minieri
Ilse and Hans J. Baer
In memory of Max and Hilde
Baer
The Bank of New York
Arthur and Diane Belfer
Estate of Charlotte V. Bergen
The Siegfried and Josephine
Bieber Foundation
The Blackstone Group
Mr. and Mrs. James A. Block
Mr. and Mrs. Leonard Block
The Bodman Foundation
Mr. and Mrs. Stanley M. Bogen
The Bristol-Myers Squibb
Foundation, Inc.
Browning-Ferris Industries
The Burnett Foundation
Capital Cities/ABC, Inc.
Carnegie Corporation of
New York
Mary and Michael Carpenter
Mr. and Mrs. David C. Clapp
The Constantiner Family
The Corbett Foundation

Nichols and Sawyer, and Bass and Diller by Chris Lee, Altman and Silversteins by Stephanie Berger.

William H. Cosby Jr.
Estate of Joy Craft
Barbara and Richard B.
Dannenberg
Mrs. Evelyn Y. Davis
Evelyn Y. Davis Foundation
Deerpath Construction
Corporation
Jim and Nancy Dine
Dresdner Bank North America
Drexel Burnham Lambert
Foundation, Inc.
E.I. du Pont de Nemours and
Company
Margot T. Egan
Mr. and Mrs. Alvin H. Einbender
Henry, Kamran and Frederick
Elghanayan
The Essex House / Nikko Hotels
International
The Fireman Hospitality Group
The Ford Foundation
Forest Electric Corp.
Nicholas C. Forstmann
Theodore J. Forstmann
Alan and Helene Fortunoff
Thomas R. and Ingrid L. Frohlich
Burns and Family
The L.W. Frohlich Charitable
Trust
The Fuji Bank Ltd. / Fuji Bank and
Trust Co.
Ira and Leonore Gershwin
Philanthropic Trust
Clive and Penny Gillinson
The Howard Gilman Foundation
Irving S. Gilmore International
Keyboard Festival
Edythe and Mathew Gladstein

Mr. Lewis L. Glucksman
Eugene and Emily Grant
Calla and Ralph Guild
Philip and Elaine Hampton
Stanley and Alice Harris
Daniel P. Hays
Estate of Dorothy H. Hirshon
Fumiko Hosoda
ITT Corporation
Ittleson Foundation, Inc.
Mr. Peter Jennings
Frederico C. Gerdaup Johannpeter
The Robert Wood Johnson Jr.
Charitable Trust
Paul A. Johnston
Rita J. and Stanley H. Kaplan
Family Foundation, Inc.
Estate of Doris Kass
In memory of Joseph P. Katz
Dr. and Mrs. Robert Kavesh
The Helen and Milton A.
Kimmelman Foundation
Beth and Michael Klein
Andrea Klepetar-Fallek
Robert and Myra Kraft
Sallie Krawcheck and Gary Appel
Mr. and Mrs. David Lloyd Kreeger
Michael (Jack) Kugler
Mr. and Mrs. Eugene M. Lang
Mrs. William S. Lasdon
The Lauder Foundation /
Leonard and Evelyn Lauder
Fund and Estée Lauder Inc.
Robert and Elaine LeBuhn
The Honorable and Mrs. Samuel
J. LeFrak
Lehman Brothers
Mr. and Mrs. Henry J. Leir
Mr. and Mrs. William M. Lese

Robert H. Lessin and Naida
Wharton Lessin
Blanche and A. L. Levine and The
A. L. Levine Foundation, Inc.
Mr. and Mrs. George Lindemann
Susan and Martin Lipton
A. L. and Jennie L. Luria
Foundation
Mr. and Mrs. Michael T. Masin
William and Helen Mazer
MBNA America Bank, N.A.
Mercedes-Benz of North
America, Inc.
Morton and Marlene Meyerson
Mr. and Mrs. Edward H.
Michaelsen
Kathryn and Gilbert Miller Fund,
Inc.
Minnesota Orchestral
Association
Miyazaki Prefectural Arts Center
Mobil Foundation, Inc.
Morgan Stanley
Nabisco Brands, Inc.
Natasha Foundation
Mr. and Mrs. Murray L. Nathan
New Street Capital
The New York Community Trust
New York State Council
on the Arts
Newmont Mining Corporation
Diane Allen Nixon
The Octavian Society
Ogilvy & Mather Worldwide
Pandick, Inc.
Ernest E. Pinter Family and
David B. Pinter Family
Paul J. Plishner
Mr. and Mrs. Shepard P. Pollack

Polshek Partnership Architects
The Port Wine Institute
Republic National Bank of
New York
Mr. and Mrs. David Rockefeller
Mr. and Mrs. Laurance S.
Rockefeller
Mr. and Mrs. Daniel Rose
Mr. and Mrs. Lewis Rudin
Mrs. Lisabeth E. Schaub
Schlumberger
In memory of Mrs. Gertrude
Schweitzer
Peter Jay Sharp
Ruth Collins Sharp
The Shores Fund
Jean and Herbert Siegel
Siemens Corporation
Frank Sinatra
Herbert and Nell Singer
Mary Jean and Frank P. Smeal
Foundation
Joan and Joel Smilow
James Thurmond Smithgall
Evelyn and Donald Spiro
Mrs. Kathryn Steinberg
Seymour Sternberg / New York
Life Foundation
Daniel Swarovski Corporations
In memory of Fran Taubkin
Mr. and Mrs. Wilmer J. Thomas Jr.
Time Warner Inc.
Laurence A. Tisch and
Preston Robert Tisch
Tishman Realty & Construction
Co., Inc.
Miss Alice Tully
Turner Construction Company
Patricia and Lawrence Weinbach /
Unisys Corporation
Volvo North America Corporation
Estate of Iva Walke
Miriam and Ira D. Wallach
Foundation
Bruno Walter Memorial
Foundation
S. G. Warburg
Warburg Pincus
Theodore and Renée Weiler
Foundation, Inc.
George and Joyce Wein
Foundation
Westdeutsche Landesbank
Girozentrale
Alice Westphal Trust
The Helen F. Whitaker Fund
A.D. Winston Corporation
Witco Corporation
Mr. and Mrs. Ying-Sheung Wu
The Xerox Foundation
Mr. Uzi Zucker
Mr. Mortimer B. Zuckerman
Anonymous (2)

As of June 30, 2010



Mike Nichols and Diane Sawyer



Mercedes T. Bass and Barry Diller



Earle S. and Linda Altman, and Klara and Larry A. Silverstein



Kenneth Zankel, Judy Francis Zankel, and Anna Zankel



Lisa and Robert F. Arming

The Isaac Stern Society of Carnegie Hall

The Isaac Stern Society honors those individuals who have included Carnegie Hall in their long-range financial plans.

Mrs. Robert Allen
James and Cecilia Alsina
Marilyn Apelson
Isabel Arenas
Cole Ramsay Bader
Arlette Levy Baker
Kathleen Beakley
Dr. Kurt Becker and
Joyce Weinstein
Mr. and Mrs. Norton
Belknap
Erna Berid
Davi Bernstein
Kenneth J. Bialkin
Jacqueline Hava Bregman
John Brewer
Sarita and Alex Broden
James A. Brophy Jr.
Lorraine Buch
Eliane Bukantz
Marjorie R. Bukzin
Rochelle Busch
Marlene Butler-Levine
Gloria Piechota Cahill
Castle B. Campbell
Elizabeth Carr
Georgia Carrington
Nora Carrol
Richard B. Casper
The Reverend Chawanda
Charae
Dr. Gilbert R. Cherrick
Vivien Ranschburg Clark
John D. Claypoole and
Frank Vazquez
Charles Edward Cole
Malcolm F. Crawford
Mr. and Mrs. Richard A.
Debs
Steve and Connie Delehanty
David Dorfman
Domitilia M. dos Santos
Diane C. Dunne
Mrs. Charles H. Dyson
Dr. Joan Eliasoph
Stuart M. Fischman
Fredrick and Ruth Freud
Sheilah Purcell Garcia
Ellen Berland Gibbs

Louis Ginsberg
Dorothy S. Girard
Dalia Carmel Goldstein
Adele Mary Grossman
Jacquelyn C. Harvey
Dr. G. Hess and
Beverly Kean-Hess
Alan Hewitt Family
Fred Holtz
Mr. W. E. H.
Hutchison-Hall IV
Klaus and Karin Jacobs
William Josephson
Carolyn Kane
Theodore D. Karchuta
Mrs. Greta Katzauer
Dr. Robert A. Kavesh
Madeline Kerns
Dr. Jamie A. Koufman
June T. Leaman
Russell V. Lee
Linda Leven
Shirley Wilkins Liebowitz
Howard K. Lipan
A. Michael and
Ruth C. Lipper
Catherine Lomuscio
Archie Mac Gregor
William M. and
Jacqueline Marks
Charles F. McCown
Christine McKeon
Phyllis Melhado
Michelle G. Miles
Andrew Miller
Dena Simone Moss
Dr. Teresa Mular
Mr. Murray L. Nathan
Alan A. and Barbara Nicoll
Sarah L. Nolin
Eleanore J. Nyilas
Doris M. Ohlsen
Emiko Okawa
Antonia Pew
Burton Yale Pines and
Helene Brenner
Sara Davis Pride
William Raff
David L. Rhody

Susan W. Rose
Marilyn Rosen, Ph.D.
Barbara Rosenthal
Jay and Gladys Rosenthal
Carol and Daniel Ruffo
Karin C. Schiavone
Patrick J. Schiavone
Sue A. Schiller
Steven Schmidt
Hynda Schneiweiss
Myrna Schore
Rosa L. Schupbach
Carol Shedlin
Irving J. Shulman
Lenore E. Sirota
Mr. and Mrs. A. J. C. Smith
Edwin and Ruby Smith
Dr. and Mrs. Peter Som
Edward P. Speiran
Donald Spoto
Gregory St. John and
Gary McKay
Roslyn Stone
Jan Stuart
Kenneth Sugarman
Dr. Stewart Taubkin
Dr. Gary Thom
Barbara Todres, in memory
of Harold B. Lawrence
Barbara Tomchin
Dr. Jeffrey H. Toney
Donna Jeanne Turnell,
in memory of John C.
Hamell
Eleanor Doblin Unger
Joan and Sanford I. Weill
Marshall M. Weinberg
In Memory of Rowenna
Wight White
Jeffrey Deane Williams
Elaine and Irving Wolbrom
Peter G. Wolff
Debbie Madesker Wolleman
Judy Francis Zankel
Mr. and Mrs. John Zick
Jonas Zweig
Anonymous (24)

As of June 30, 2010



Members of Ensemble ACJW



Grandmaster Flash and Pete Wentz



Carleth Keys and Daniel Montilla



Harun Zankel, Melissa Auf der Maur, Jimmy Zankel, and Stephen Howard Jr.

Zankels by Chris Lee; Arming by Julie Skarati; members of Ensemble ACJW and Notables events by Craig Chesek.

Notables

The Notables, Carnegie Hall's membership and ticket program for music enthusiasts in their 20s and 30s, experienced an outstanding year during the 2009–2010 season.

In October, members celebrated the beginning of a new year of benefits by attending *GAME ON! The Video Game and Music Revolution*—an evening of conversation and music that also featured a special demonstration of the popular video game *The Beatles: Rock Band* on the Zankel Hall stage. Hosted by Fall Out Boy's Pete Wentz, the unique event featured the world's leading rock stars, composers, and game developers who are carving out new territories for the future of music. Pia and Jimmy Zankel graciously underwrote the entire evening, which included an interactive meet-the-artists after-party at the Nintendo World Store at Rockefeller Center.

The Notables Committee built on the year's distinctiveness by curating a series of special events outside the Hall, which included collaborations with Sony Pictures, Norwood club, and The Cathedral Church of St. John the Divine. Members had the opportunity to see a bluegrass performance by Steve Martin, meet Joshua Bell and Jeremy Denk at a private reception, and attend The Sixth Annual Notable Occasion in Weill Recital Hall, hosted by Nicola Bulgari and featuring a performance by Ensemble ACJW.

The Notables remains the largest donor group to contribute to the Weill Music Institute. Carnegie Hall is grateful for the support of these young donors who have made music education a priority.

Committees and Councils

Executive Committee

Chair

Sanford I. Weill

Committee

Mercedes T. Bass
Kenneth J. Bialkin
Clarissa Alcock Bronfman
Richard A. Debs
Edward C. Forst
Klaus Jacobs
Sallie L. Krawcheck
Thomas G. Maheras
Peter W. May
Joshua L. Nash
William G. Parrett
Laura H. Pomerantz
Burton P. Resnick
S. Donald Sussman
Sanford I. Weill

Audit Committee

Chair

John W. Zick

Committee

Gregory T. Durant
Stephen R. Howe Jr.
Dennis M. Nally
William G. Parrett
Lawrence A. Weinbach
John W. Zick

Nominating Committee

Chair

Peter W. May

Committee

Mercedes T. Bass
Richard A. Debs
Sallie L. Krawcheck
Peter W. May
Laura H. Pomerantz
Stanley S. Shuman

Development Committee

Chair

Thomas G. Maheras

Committee

Norton Belknap
Kenneth J. Bialkin
Thomas G. Maheras
Harold McGraw III
Lester S. Morse Jr.
Laura H. Pomerantz
Suki Sandler

Development Subcommittees

Carnegie Hall Partnership Circle

Chair

Kenneth J. Bialkin

Committee

Norton Belknap
Kenneth J. Bialkin
Demetrios A. Boutris
Richard A. Debs
The Honorable Roy M. Goodman
Jonathan Koslow
Michelle Morris
Lawrence A. Weinbach

Corporate Leadership Committee

Chair

Harold McGraw III

Committee

Gregory T. Durant
Stephen R. Howe Jr.
Yoshimi Inaba
Sallie L. Krawcheck
Terry J. Lundgren
Thomas G. Maheras
David J. Mandelbaum
Harold McGraw III
Dennis M. Nally
Dr. Pamela Jane Newman
William G. Parrett
Christopher J. Roberts

Foundation Relations Council

Chair

Norton Belknap

Committee

Norton Belknap
Albert J. Cardinali
Berteline Baier Dale
Richard A. Debs
Judith W. Evnin
Linda R. Franciscovich
Catherine French
W. Loeber Landau
James McGarry
John Morning
Irving Sitnick
Betty Smith
Milton Warshaw

The Notables Committee

Co-Chairs

Cody Franchetti
Jimmy Zankel

Executive Committee

Carrie Cloud
Lara Meiland-Shaw
Mary Wible Vertin

Steering Committee

Wes Anderson
Joshua Bell
Ryan Brown
Veronica Bulgari
Caroline Rocco Dennis
James Deutch
Seth Ginns
Brian Gorman
Jamie Johnson
Jared Kushner
Dylan Hale Lewis
Audra McDonald
Nico Muhly
Daniel Montilla
Mark Ronson
Christin Barringer Rueger
Sarina Sassoon Sanandaji
Duncan Sheik
Jason Soloway
Dani Stahl

Patron Council

Chair

Suki Sandler

Committee

Norton Belknap
Robert W. Jones
Elaine LeBuhn
Robert LeBuhn
Tess Mateo
Janet W. Prindle
James H. Rosenfield
Suki Sandler
Cynthia D. Sculco
Charles J. Seidler
Kathryn Steinberg
Vera Stern
James B. Stewart Jr.
Douglas D. Thomas



Joan and Sanford I. Weill



Laura H. Pomerantz, Kate D. Levin, and Emme Deland

Real Estate Council

Co-Chairs

Earle S. Altman
Louis S. Brause
Robert Kaufman
Joel Leitner
Stephen J. Meringoff
Lester S. Morse Jr.
Burton P. Resnick
Aby J. Rosen
Larry A. Silverstein
Bernard Spitzer

Membership Committee

Kyle Warner Blackmon
David Brause
Brian Gorman
Stephanie Goto
Josh Prottas
Jonathan Resnick
Gregg L. Schenker
David S. Winter

Special Events Committee

Chair

Laura H. Pomerantz

Committee

Micky Beyer
Clarissa Alcock Bronfman
Judith W. Evnin
Arlene Genatt
Katya Gorbatiouk

Sharon King Hoge

Linda M. Lindenbaum
Leni May
Dara Perl binder
Joan Picket
Laura H. Pomerantz
Judith B. Resnick
Susan Schweitzer*
Sydney R. Shuman
Vera Stern
Adrienne Vittadini
Joan H. Weill

**In memoriam*

Finance and Operations Committee

Co-Chairs

Klaus Jacobs
William G. Parrett

Committee

Richard A. Debs
Gregory T. Durant
Edward C. Forst
Klaus Jacobs
Gilbert Kaplan
Robert I. Lipp
Thomas G. Maheras
William G. Parrett
Burton P. Resnick
Stanley S. Shuman
A. J. C. Smith

Investment Committee

Co-Chairs

Joshua L. Nash
S. Donald Sussman

Committee

Norton Belknap
Richard A. Debs
Klaus Jacobs (ex officio)
Robert W. Jones
Thomas G. Maheras
Joshua L. Nash
Frank N. Newman
S. Donald Sussman

New Ventures and Technologies Committee

Chair

TBD

Committee

Gilbert Kaplan
Bella L. Linden
Terry J. Lundgren
Peter W. May
Harold McGraw III
Laura H. Pomerantz

Weill Music Institute Advisory Council

Co-Chairs

Yo-Yo Ma
Joan H. Weill

Committee

Emanuel Ax
Eric Booth
Judith W. Evnin
Valery Gergiev
Willie L. Hill Jr.
Klaus Jacobs (ex officio)
Judith Jamison
Lang Lang
Yo-Yo Ma
Joseph Polisi
Hunter Rawlings III
Susan W. Rose
Thomas J. Schwarz
Larry Scripp
Catherine Stevens
S. Donald Sussman
Dawn Upshaw
Diane Volk
Joan H. Weill
Sanford I. Weill (ex officio)
Judy Francis Zankel

As of June 30, 2010

Weills by Julie Skeratt; Pomerantz, Levin, and Deland by Chris Lee.

Treasurer's Review



Carnegie Hall's June 30, 2010 balance sheet shows a growth in net assets of \$53 million, from \$332 million to \$385 million, the result of positive operating results, improved performance of its investment portfolio, and increased contributions to its capital projects.

In 2008, anticipating continued world financial challenges, Carnegie Hall reduced the number of presentations planned for the 2009–2010 concert season in order to operate responsibly in a tough fiscal environment. Operating expenses, excluding depreciation, decreased 8%—from \$76 million to \$70 million—in fiscal year 2010. At the same time, subscription and single-ticket sales for events presented by Carnegie Hall remained strong, and the festival *Ancient Paths, Modern Voices* was a critically acclaimed artistic success, helping Carnegie Hall achieve its goal of a balanced operating budget.

In fiscal year 2010, the Weill Music Institute reached over 115,000 people, more than ever before. A new WMI pilot program called Musical Connections was a success, presenting more than 50 events in hospitals, shelters, elderly care centers, and correctional institutions in the New York City area. Total education expenses, combined with costs associated with The Academy, exceeded \$8.6 million.

Contributions supporting annual operations dropped 7% to \$22 million, primarily due to decreased support from foundations. The City of New York, through the Department of Cultural Affairs and the New York City Council, provided \$1.1 million for operating and energy expenses, and Carnegie Hall acknowledges with gratitude New York City's continued significant funding for capital projects. Carnegie Hall also received significant donor support for its capital projects.

Total endowment investments were \$232 million as of June 30, 2010, up from \$212 million the previous year. The rate of return was 14% for fiscal year 2010; in the prior fiscal year, endowment investments depreciated 17%.

During fiscal year 2010, Carnegie Hall began its Studio Towers Renovation Project, a \$200-million project that is expected to be completed in 2013.

Carnegie Hall issued \$110 million in fixed-rate bonds in November 2009 through the Trust for Cultural Resources of the City of New York. The bonds have a 30-year maturity and an all-in true interest cost of 5.06%. Moody's has given these bonds an A1 credit rating, and Standard & Poor's has given them an A+. The November 2009 bond financing transaction also included the redemption of \$41.6 million worth of Series 2002 variable-rate auction bonds and termination of the 2006 interest-rate swap transaction related to those variable-rate bonds.

The generous support of its donors has helped Carnegie Hall to emerge from difficult economic times in a strong position of financial stability. The dedication of the staff has also been essential to making Carnegie Hall's achievements possible. We are deeply grateful to all of them.

Klaus Jacobs

Klaus Jacobs
Vice Chairman and Treasurer

A copy of the latest annual financial report filed with the New York Department of Law may be obtained by writing to Attorney General, State of New York, Charities Bureau, 120 Broadway, New York, NY 10271, or Carnegie Hall, 881 Seventh Avenue, New York, NY 10019-3210.

Balance Sheet

The Carnegie Hall Corporation and The Carnegie Hall Society, Inc.

	June 30, 2010	June 30, 2009
Assets		
Cash and cash equivalents	\$7,103,000	2,703,000
Contributions receivable, net	67,369,000	33,589,000
Prepaid expenses and other assets	3,870,000	3,286,000
Funds held by Trustee	48,956,000	—
Investments	259,238,000	244,662,000
Fixed assets, net	136,650,000	117,422,000
Total assets	\$523,186,000	401,662,000
Liabilities		
Advance sale of tickets and other liabilities	\$22,858,000	17,148,000
Loans payable	115,012,000	52,931,000
Total liabilities	\$137,870,000	70,079,000
Net Assets		
Unrestricted	136,538,000	133,105,000
Temporarily restricted	70,245,000	22,797,000
Permanently restricted	178,533,000	175,681,000
Total net assets	\$385,316,000	331,583,000
Total liabilities and net assets	\$523,186,000	401,662,000

Administrative Staff

Executive Office

Clive Gillinson
Executive and Artistic Director

Catherine Schaefer
Executive Assistant

Administration

Richard Malenka
Director

Susanna Prough
Budget Manager

Melissa Monterosso
Coordinator

Building Operations

Hugh McCloy
Chief Engineer

Anthony Regno
Facilities Supervisor

Tamika Reid
Manager

Anthony J. Strano
Director, Security

Event Services

Sarah Zeltzer
Manager

Human Resources

Catherine Casella
Director

Susanna Cornelius
Allison Meistrell
HR Generalists

Office Services

Stephanie Cole-Jacobs
Associate Manager

Wesner Bazin
Coordinator

Juan Juarez
Mail Clerk

Margaret McGovern
Receptionist

Development

Susan J. Brady
Director

Julia Schwartz
Director, Development Services and Friends

Kathleen Maresco
Associate, Development Services

Christopher Stuart
Database Coordinator

Brian Huff
Tomoko Shannon
Administrative Assistants

Institutional Giving

Corporate Relations and Sponsorships

Dori Fisher
Director

Julia VanTieghem
Coordinator

Foundation Relations
Nancy Kingston
Director

Laura Schiller
Grants Manager

Sarah Graham
Associate

Laurie Barowski
Administrative Assistant

Government Relations
David Freudenthal
Director

Callie Herzog
Manager

Jessica Silverman
Administrative Assistant

Individual Giving

Patron Program

Don Spalding
Director

Matt Quam
Associate Director

Tyler Armstrong
Associate

Lindsay San Filippo
Coordinator

Planned Gifts and Special Projects

Carl K. Steffes
Director

Emily Vestal
Researcher

Cassie Kirk
Research Assistant

Luke Gay
Administrative Assistant

Carnegie Hall Friends
Andrew Rubinstein
Manager

Karen Chia
Associate

Jamie Santamour
Administrative Assistant

Special Events
Kathryn Macky
Director

Ginger Vallen
Manager

Caitlin Coen
Tiffany Rosenquist
Assistants

Finance

Richard A. Matlaga
Chief Financial Officer

Theodore E. Phillips
Controller

Christine Offermann
Manager, Accounting

Aris Silverdis
Manager, Financial Reporting

Claudine DeGennaro
Corporate Accountant

Caroline Bonilla
Society Accountant

Maria Loor
Payroll Administrator

Pamela Harris
Analyst, Hall Operations

Tom Huynh
Analyst, Programming

Alvina Yeung
Administrative Assistant

Information Technology and Interactive Services

Aaron Levine
Chief Information Officer

Morgan Weiss
Administrative Assistant

Information Technology and New Media

Denise Brooks
Director

Afshin Mahabadi
Associate Director, Information Systems

Ed Denning
Manager, Business Applications

Simon Basyuk
Manager, Database Administration

Bronwen Stine
Associate Director, Information Technology

Tak Lai
Manager, Network Architecture

Nick Calamuso
Network Support Specialist

Bangaly Kourouma
Technical Analyst

Interactive Services

Andrew Chandler
Director

Jason Bitman
Manager

Daniel Gomez
Web Producer

Marketing and Creative Services

Naomi Grabel
Director

Amanda Villegas
Office Coordinator

Publishing and Creative Services
Kathleen Schiaparelli
Director

Mark A. Berry
Assistant Editorial Director

Seamus O'Reilly
Web Content Manager

Jay Geneske
Web Producer, WMI and Special Projects

Alex Ammar
Managing Editor

J. Adams Holman
Assistant Managing Editor

Jay Goodwin
Associate Editor

Kevin Shihoten
Editorial Assistant

Bernard Hallstein
Senior Art Director

Cherry Liu
Assistant Art Director

Evelyn Ochoa
Graphics Manager

Majel Peters
David Silva
Assistant Managers, Graphics

Hiroshi Park
Graphic Designer

Ross Bonanno
Production Director

Lai-FunTsui
Associate Production Manager

Marketing and Visitor Services

David C. Wyeth
Director

Jennifer Hempel
Associate Director, Marketing and Business Development

Michael Naess
Marketing Manager

Jason Yau
Associate

Candice Beckmann
Marketing and Licensing Associate

Sean Morrow
Associate Director, Visitor Services

Yeji Cha
Associate

Tosaporn Sasitorn
Assistant Gift Shop Manager

Kimberly Heron
Retail Associate

e-Strategy

Christopher Gruits
Director

Seamus O'Reilly
Web Content Manager

Jay Geneske
Web Producer, WMI and Special Projects

Carter Hallett
Electronic Marketing Manager

Artistic Planning And Operations

Anna Weber
General Manager, Artistic and Operations

Alicia Jones
Coordinator, Program Planning

Artistic Planning
Jeremy Geffen
Director

Kathy Schuman
Artistic Administrator

Lea Slusher
Director, Artistic Projects

Andrew Byrne
Manager, Festivals and Special Projects

Patrick Sharpe
Associate Director, Artistic Projects

Julia Callahan
Manager, Program Planning

Melanie Clegg
Lisa McCullough
Associate Managers, Artistic Projects

Alan Benson
Associate Manager, Artistic Planning

Jennifer Flores
Coordinator, Artistic Projects

Victoria King
Coordinator, Artistic Programs

Debby King
Artist Liaison

Booking
Elaine Georges
Director

Denise Alfaroni
Assistant Director

David Suss
Coordinator

Hall Operations
Joseph Schmaderer
Director of Operations

James A. Gerald
House Manager

Jill Marshall
Associate House Manager

James Badrak
Director of Production

Rachel S. Davis
Thomas F. Eirman
John Lant
Production / Stage Managers

Jennifer LaBonge
Joshua Reynolds
Jenny Weber
Performance Managers

Leszek Wojcik
Recording Studio Manager

Steven C. Brody
Peter Huitzacua
Operations Managers

Joseph C. Reid
Head Usher

Tim Hays
Administrative Assistant, HMO

Stage Crew
Ken Beltrone
James Csollany
Carpenters

John Cardinale
John Goodson
Electricians

Dennis O'Connell
Properties Manager

Brady and Boulez by Steve J. Sherman; Trio Mediaeval by Peter Checochia; Zhang Family Band by Stefan Cohen; (Back Cover) So Percussion and Hampton by Julien Jourdes; Casimiro by Jack Veroogian; Thibaudet and Hobson: Pilot by Chris Lee; Downs by Stefan Cohen; Rattle by Steve J. Sherman; Bitová by Peter Checochia.

Public Affairs

Synneve Carlino
Director

Matthew Carlson
Assistant Director

Corinne Zadik
Manager

Tonya Bell-Green
Associate Manager

Justin Holden
Maggie Ciadella
Associates

Janna Wielgorecki
Coordinator

Rose Museum and Archives
Gino Francesconi
Museum Director and Archivist

Kathleen Sabogal
Manager, Archives

Robert Hudson
Associate Archivist

Ticketing Services

Timmy Wasley
Director

Mike McCarthy
Treasurer

Joseph Coster
Assistant Treasurer

Valeri Olson
Manager, Subscriptions

Jonathan Bradley
Manager, CarnegieCharge

David Gurland
Patron Desk Manager

Terri L. Brown
Ticketing Performance Manager

Rayna Bourke
Associate Manager, Ticketing Services

Nick Singh
Associate Manager, CarnegieCharge

Erin Etheridge
Associate, CarnegieCharge

Michael Kumor
Beth Nerich
John Nesbitt
Matthew Poulos
Patricia Smith
Joseph Wittleder
Box Office Representatives

Dennette Dyton
Jasmine Reed
Ann Scott
Subscription Representatives

Emily Howard
Kavita Mahabir
Antoinette Rogers
Teresa Wimmer
CarnegieCharge Representatives

Weill Music Institute

Sarah Johnson
Director

Misty Tolle
Director, School and Family Programs

Ann Gregg
Director, Community and Professional Training Programs

Christopher Amos
Director, Distance Learning

Amy Kirkland
Manager, School Partnerships

Marte Siebenhar
Manager, Elementary School Programs

Aaron Siegel
Manager, Secondary and Middle School Programs

Elizabeth Snodgrass
Manager, Community Programs

Yelena Ingberg
Application Support Specialist

Susan Landis
Associate, School Programs

Leah Swann
Associate, Professional Programs

Lisa Vettoso
Associate, School Partnerships

Heather Briere
Coordinator, Education Programs

Elizabeth Ferguson
Coordinator, Community Programs

Jonathon Hampton
Coordinator, Distance Learning

Rebekah Harkins
Coordinator, Professional Programs

Stephanie Rodousakis
Coordinator, School Programs

Erica Westcott
Coordinator, Secondary School Programs

Laura Costa
Administrative Assistant, Elementary School Programs

The Richard and Barbara Debs Composer's Chair

Louis Andriessen

The Academy—a program of Carnegie Hall, The Juilliard School, and the Weill Music Institute

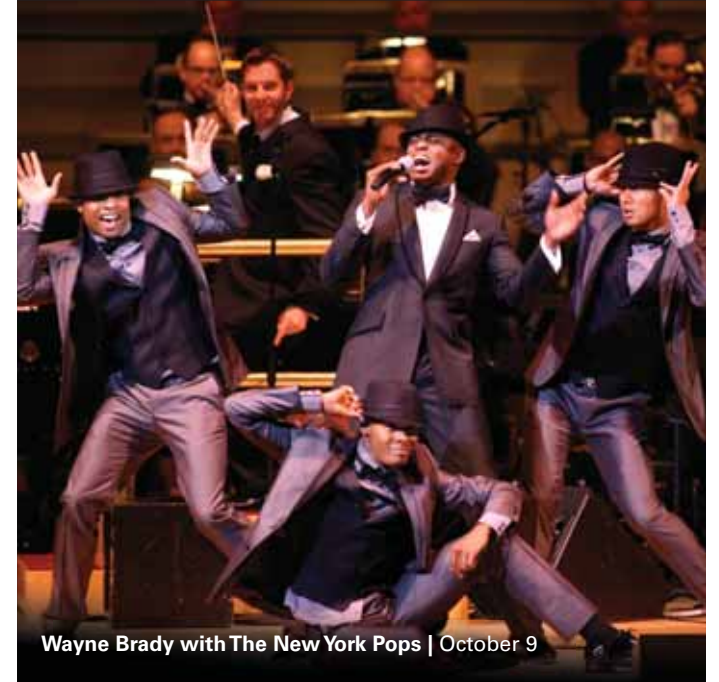
Amy Rhodes
Director

Rachel Sokolow
Education Manager

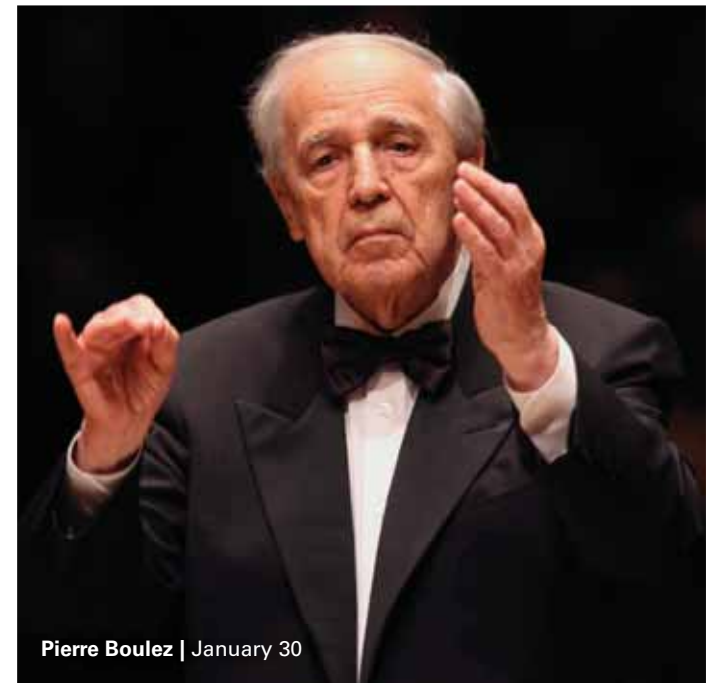
Betsie Becker
Operations Manager

Deanna Kennett
Program Coordinator

As of June 30, 2010



Wayne Brady with The New York Pops | October 9



Pierre Boulez | January 30



Trio Mediaeval | November 21

Carnegie Hall's mission is to present extraordinary music and musicians on the three stages of this legendary hall, to bring the transformative power of music to the widest possible audience, to provide visionary education programs, and to foster the future of music through the cultivation of new works, artists, and audiences.



Back cover: (top row) Jason Treuting of So Percussion, March 25; Fargana Qasimova of Alim Qasimov Ensemble, March 14; Jean-Yves Thibaudet, December 15; Lila Downs, April 15; (bottom row) Sir Simon Rattle, November 12; Iva Bittová, April 17; Ann Hobson Pilot, October 1; David Harrington of Kronos Quartet, November 3.



CARNEGIE HALL

881 Seventh Avenue, New York, NY 10019
212-903-9600 | carnegiehall.org